

STATE OF ILLINOIS
DEPARTMENT OF TRANSPORTATION
DIVISION OF HIGHWAYS

**PROPOSED
HIGHWAY PLANS**

FAP ROUTE 310 (IL ROUTE 255)

SECTION 60-15VB-1 & 2

PROJECT NHF-0310(136)

MADISON COUNTY

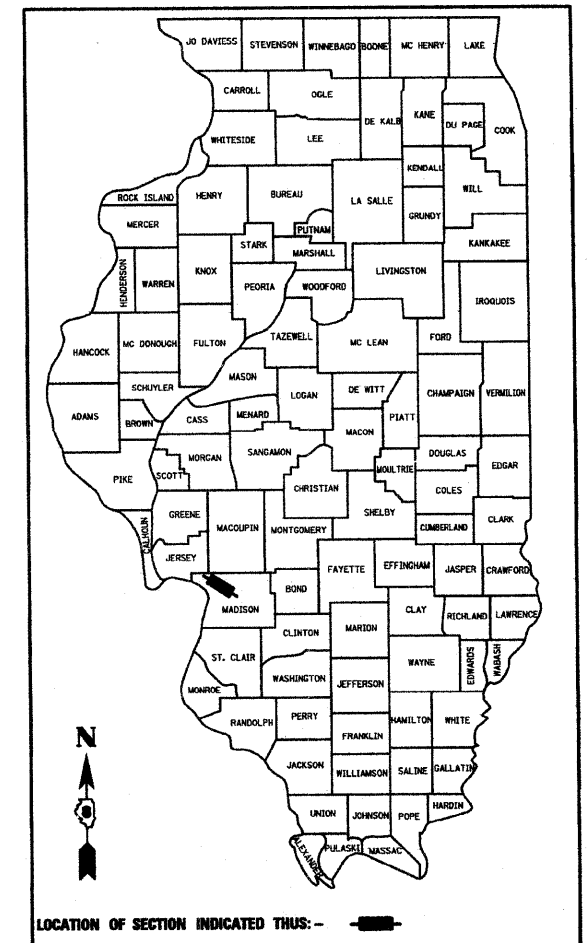
C-98-014-03

CONSTRUCT TWO GRADE SEPARATION STRUCTURES
TO CARRY FAP RTE 310, RAMP C & RAMP D OVER UNION
PACIFIC RAILROAD AND KANSAS CITY SOUTHERN RAILWAY

F.A.P. RTE.	SECTION	COUNTY	TOTAL SHEETS	SHEET NO.
310	60-15VB-1 & 2	MADISON	148	1

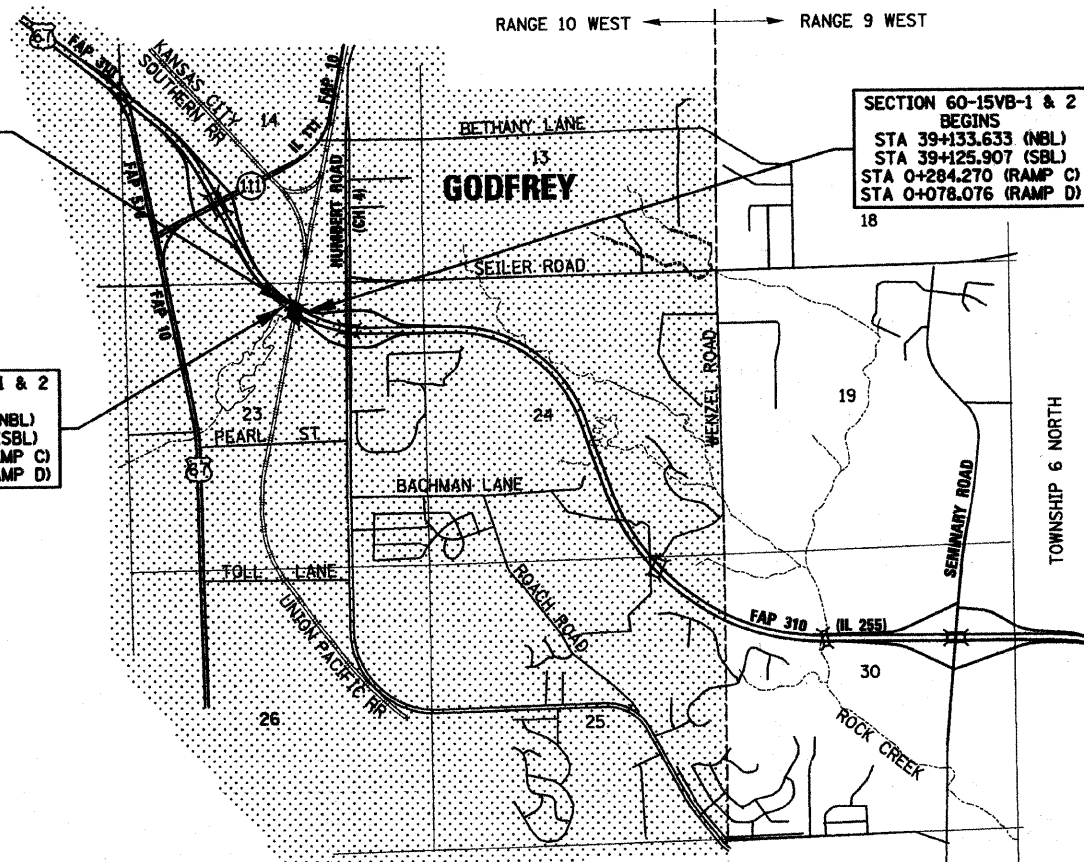
CONTRACT NO. 76634
+4
153

D-98-038-92



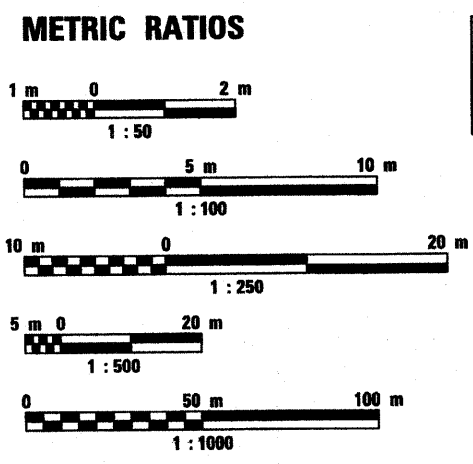
FOR INDEX OF SHEETS AND HIGHWAY
STANDARDS SEE SHEET NO. 2

SECTION 60-15VB-1 & 2
TWO GRADE SEPARATION STRUCTURES:
SN 060-0310: CONTINUOUSLY WELDED PLATE GIRDER &
R.C. DECK SUPERSTRUCTURE ON
PILE BENT ABUTMENTS 57.516 m BK TO BK
OF ABUTMENT. CARRIES NBL & RAMP C
OVER RAILROAD.
SN 060-0311: CONTINUOUSLY WELDED PLATE GIRDER &
TAPERED R.C. DECK SUPERSTRUCTURE ON
PILE BENT ABUTMENTS 62.338 m BK TO BK
OF ABUTMENT. CARRIES SBL & RAMP D
OVER RAILROAD.



SECTION 60-15VB-1 & 2
BEGINS
STA 39+133.633 (NBL)
STA 39+125.907 (SBL)
STA 0+284.270 (RAMP C)
STA 0+078.076 (RAMP D)
18

SECTION 60-15VB-1 & 2
ENDS
STA 39+191.921 (NBL)
STA 39+187.592 (SBL)
STA 0+341.225 (RAMP C)
STA 0+012.454 (RAMP D)
19



FULL SIZE PLANS HAVE BEEN PREPARED USING STANDARD
ENGINEERING SCALES. REDUCED SIZED PLANS WILL NOT
CONFORM TO STANDARD SCALES. IN MAKING MEASUREMENTS
ON REDUCED PLANS, THE ABOVE SCALES MAY BE USED.

J.U.L.I.E.
JOINT UTILITY LOCATION INFORMATION
FOR EXCAVATION (1-800-892-0123)

CONTRACT NO. 76634



Eric B. Barnes
REGISTERED PROFESSIONAL ENGINEER
STATE OF ILLINOIS NO. 062-052141
LICENSE EXPIRES NOVEMBER 30, 2009
DATE 5-01-09

GRAPHIC SCALE IN KILOMETERS
0 1 km 2 km

GROSS AND NET LENGTH OF SECTION 60-15VB-1 & 2
= 58.288 METERS = 0.058 KILOMETERS (NBL)
= 61.685 METERS = 0.062 KILOMETERS (SBL)
= 56.955 METERS = 0.057 KILOMETERS (RAMP C)
= 65.622 METERS = 0.066 KILOMETERS (RAMP D)

DESIGN DESIGNATION
2230(24) ARTERIAL 7.11 (FD-20)

Latitude / Longitude
Latitude: 38.98
Longitude: 90.18

PLANS PREPARED BY:
**KLINGNER
& ASSOCIATES, P.C.**

Engineers / Architects
616 North 24th Street (217) 223-3670
Quincy, Illinois 62301 FAX: 223-3603
Internet Address: www.klingner.com
STATE OF ILLINOIS DESIGN FIRM # 1842738

STATE OF ILLINOIS
DEPARTMENT OF TRANSPORTATION
DIVISION OF HIGHWAYS

SUBMITTED May 4, 2009
May C. Jamie
DEPUTY DIRECTOR OF HIGHWAYS, REGION FIVE ENGINEER

May 8, 2009
Charles E. Ingersoll
ENGINEER OF DESIGN AND ENVIRONMENT

May 8, 2009
Christie M. Reed
DIRECTOR, DIVISION OF HIGHWAYS

PRINTED BY THE AUTHORITY
OF THE STATE OF ILLINOIS

Rev. 6-3-09

PROJECT ENGINEER: PATTI LEBEAU (618)346-3179
SQUAD CONTACT: ARTHUR MUEHLFELD (618)346-3209

p:\00611\es\000024\rd\Railroad-Brdg\ROADPLANS\cover-sh1-r-f.dgn

\$XXX\$

F.A.P. RTE.	SECTION	COUNTY	TOTAL SHEETS	SHEET NO.
310	60-15VB-1&2	MADISON	149	2
STA.		TO STA.		
FED. ROAD DIST. NO.		ILLINOIS	FED. AID PROJECT	
CONTRACT NO. 76634				

INDEX OF SHEETS

1	COVER SHEET
2	GENERAL NOTES, STANDARDS, INDEX OF SHEETS AND LEGEND
3-4	SUMMARY OF QUANTITIES
5-6	TYPICAL SECTIONS
7	SCHEDULES OF QUANTITIES
8-10	GENERAL LAYOUT & HORIZONTAL CONTROL
11-14	HORIZONTAL CONTROL TIES
15-20	PLAN AND PROFILE SHEETS
21-28	PLAT OF HIGHWAYS SHEETS
29-30	CLEAR ZONE AND SLOPE TRANSITION SHEET
31	GRADING PLAN
31A-31D	MSE LAYOUT & DETAIL SHEETS
32-67	S.N. 060-0310 PLANS (NB IL 255 & RAMP C)
68-112	S.N. 060-0311 PLANS (SB IL 255 & RAMP D)
113-116	STORM WATER POLLUTION PREVENTION PLAN
117-121	SOIL STRATA PLAN AND PROFILE SHEETS
122-123	GUARDRAIL AND SHOULDER WIDENING SHEETS
124-125	MISCELLANEOUS DETAILS
126-134	FAP 310 (IL 255) CROSS SECTIONS
135-136	CULVERT CROSS SECTIONS
137-144	CONSTRUCTION ACCESS ROAD CROSS SECTIONS
145-149	RAILROAD NO. 1 CROSS SECTIONS

GENERAL NOTES

- ALL ELEVATIONS REFER TO USGS MEAN SEA LEVEL DATUM.
- ANY REFERENCE TO A STANDARD IN THESE PLANS SHALL BE INTERPRETED TO MEAN THE EDITION AS INDICATED BY THE NUMBER LISTED OR THE COPY OF STANDARD INCLUDED IN THESE PLANS. THE STANDARDS AND REVISION NUMBERS SHALL APPLY TO THIS PROJECT.
- ABANDONED UNDERGROUND UTILITIES THAT CONFLICT WITH CONSTRUCTION SHALL BE DISPOSED OUTSIDE THE LIMITS OF RIGHT OF WAY ACCORDING TO ARTICLE 202.03 OF THE STANDARD SPECIFICATIONS AND AS DIRECTED BY THE ENGINEER. THIS WORK WILL NOT BE PAID FOR SEPARATELY BUT SHALL BE CONSIDERED INCLUDED IN THE COST OF EARTH EXCAVATION AND NO ADDITIONAL COMPENSATION WILL BE ALLOWED.
- THE CONTRACTOR SHALL VERIFY ALL DIMENSIONS AND CONDITIONS IN THE FIELD PRIOR TO CONSTRUCTION AND ORDERING OF MATERIALS.
- ALL TREES, BRUSH, AND SHRUBS WITHIN THE CONSTRUCTION LIMITS WILL BE REMOVED IN ACCORDANCE WITH THE STANDARD SPECIFICATIONS. ONLY THOSE TREES DESIGNATED BY THE ENGINEER OR LISTED IN THE TREE REMOVAL SCHEDULE SHALL BE REMOVED. TREES ALONG THE EDGE OF THE RIGHT OF WAY SHALL BE SAVED IF, IN THE OPINION OF THE ENGINEER, THEY DO NOT INTERFERE WITH CONSTRUCTION OPERATIONS. THE CONTRACTOR WILL PROTECT ALL REMAINING TREES FROM DAMAGE DUE TO HIS OPERATIONS.
- ILLINOIS STATE LAW REQUIRES A 48-HOUR NOTICE TO BE GIVEN TO UTILITIES BEFORE DIGGING. FIELD MARKING OF FACILITIES MAY BE OBTAINED BY CONTACTING J.U.L.I.E. OR FOR NON-MEMBERS, THE UTILITY COMPANY DIRECTLY. AGENCIES KNOWN TO HAVE FACILITIES WITHIN THE PROJECT ARE AS FOLLOWS:

- | | |
|---------------------|----------------------------|
| <u>ABOVE GROUND</u> | <u>BELOW GROUND</u> |
| *AMEREN UE | *SBC |
| | *FOSTERBURG WATER |
| | *IL AMERICAN WATER - ALTON |
| | *AMEREN UE |
| | *MCI WORLDCOM |
| | *AT&T CABLE SERVICES |
| | *SPRINT |
| | *VILLAGE OF GODFREY |
| | *CHARTER COMMUNICATIONS |


MEMBERS OF J.U.L.I.E. (800)-892-0123 ARE INDICATED BY *. NON J.U.L.I.E. MEMBERS MUST BE NOTIFIED INDIVIDUALLY.

GENERAL NOTES

- SEEDING SHALL BE PLACED ON ALL AREAS THAT ARE DISTURBED BY CONSTRUCTION OPERATIONS AS DIRECTED BY THE ENGINEER. SEEDING SHALL BE PAID FOR ONLY WITHIN THE PROPOSED RIGHT-OF-WAY OR EASEMENT LIMITS. ALL AREAS DISTURBED BY THE CONTRACTOR OUTSIDE THE PROPOSED CONSTRUCTION LIMITS SHALL BE SEEDED, AS DIRECTED BY THE ENGINEER, AT THE CONTRACTOR'S EXPENSE.
 - FERTILIZER NUTRIENTS SHALL BE APPLIED TO BOTH THE SEEDED AREAS AND THE AREAS COVERED WITH EROSION CONTROL BLANKET.
 - DO NOT INCLUDE MULCH OR EMULSIFIED ASPHALT ON EROSION CONTROL BLANKET AREAS.
 - IF ANY UNSUITABLE MATERIAL IS INCOUNTERED DURING CONSTRUCTION, IT WILL BE NECESSARY TO REMOVE THE UNSUITABLE MATERIAL AND REPLACE IT WITH A SUITABLE MATERIAL AS APPROVED BY THE ENGINEER. THIS WILL BE PAID FOR ACCORDING TO ARTICLE 109.04.
 - THE PROPOSED EMBANKMENT SHALL BE BENCHED INTO THE EXISTING SLOPES TO THE SATISFACTION OF THE ENGINEER.
 - IF THERE IS A DISCREPANCY BETWEEN THE RIGHT OF WAY SHOWN ON THE PLANS AND THE PLAT OF HIGHWAYS, THE PLAT OF HIGHWAYS ALWAYS TAKES PRECEDENCE.
 - THE REMOVAL AND DISPOSAL OF ABANDONED FENCING, DEBRIS, BRUSH, RIPRAP, STONE, CONCRETE SLABS, TILE, SIDEWALK, ETC. NOT PAID FOR SPECIFICALLY ON THE PLANS WILL BE CONSIDERED TO BE INCLUDED IN THE EARTH EXCAVATION PAY ITEM.
 - THE FOLLOWING RATES OF APPLICATION HAVE BEEN ASSUMED IN CALCULATING PLAN QUANTITIES:

GRANULAR MATERIALS	2.5 M TONS / CU M
BITUMINOUS MATERIALS	2.0 LITERS / SQ M
AGGREGATE COVER AND SEAL COATS	0.014 M TONS / SQ M
- 1 METRIC TON = 1000 KG

LEGEND

- BOP BEGINNING OF PROFILE GRADE
- EOP END OF PROFILE GRADE
-  TREES TO BE REMOVED (AREA)

IDOT HIGHWAY STANDARDS

000001-05	STANDARD SYMBOLS, ABBREVIATIONS, AND PATTERNS
001001-02	AREAS OF REINFORCEMENT BARS
202001-01	EARTH MEDIAN DITCH CHECK
280001-04	TEMPORARY EROSION CONTROL SYSTEMS
515001-03	NAME PLATE FOR BRIDGES
542121-02	REINFORCED CONCRETE END SECTIONS FOR MULTIPLE (2&3) PIPE CULVERTS 1050mm THRU 1500mm AT RIGHT ANGLES WITH ROADWAY
701901-01	TRAFFIC CONTROL DEVICES
601101-01	

COMMITMENTS

NO COMMITMENTS HAVE BEEN MADE FOR THIS PROJECT.

REVISIONS	
NAME	DATE

ILLINOIS DEPARTMENT OF TRANSPORTATION
GENERAL NOTES & INDEX
FAP 310 (IL 255)
SECTION 60-15VB-1 & 2
MADISON COUNTY
 DRAWN BY EBB
 CHECKED BY
 DATE

Rev. 6-3-09
 Rev. Sheet 5-28-09

\$FILE\$

SUMMARY OF QUANTITIES

F.A.P. RTE.	SECTION	COUNTY	TOTAL SHEETS	SHEET NO.
310	60-15VB-1&2	MADISON	149	3
STA.		TO STA.		
FED. ROAD DIST. NO.		ILLINOIS FED. AID PROJECT		
CONTRACT NO. 76634				

SUMMARY OF QUANTITIES				CONSTRUCTION TYPE CODE						
CODE NO	ITEM	UNIT	TOTAL QUANTITIES	URBAN						
				80% FEDERAL 20% STATE						
				1000	SEC 60-15VB-1 X171-58	SEC 60-15VB-2 X171-58				
28000300	TEMPORARY DITCH CHECKS	EACH	22	22						
28000500	INLET AND PIPE PROTECTION	EACH	7	7						
50500505	STUD SHEAR CONNECTORS	EACH	12354		6183	6171				
50800515	BAR SPLICERS	EACH	296		150	146				
51203200	TEST PILE METAL SHELLS	EACH	4		2	2				
51500100	NAME PLATES	EACH	2		1	1				
52100010	ELASTOMERIC BEARING ASSEMBLY, TYPE I	EACH	49		27	22				
52100020	ELASTOMERIC BEARING ASSEMBLY, TYPE II	EACH	9			9				
67000400	ENGINEER'S FIELD OFFICE, TYPE A	CAL MO	30	30						
67100100	MOBILIZATION	L SUM	1	1						
Z0041500	PLUG EXISTING CULVERTS	EACH	1	1						
Z0048665	RAILROAD PROTECTIVE LIABILITY INSURANCE	L SUM	1	1						
Z0065100	SETTLEMENT PLATFORMS	EACH	4	4						
M2010500	TREE REMOVAL, HECTARES	HA	2.0	2.0						
M2020010	EARTH EXCAVATION	CU M	6825	6825						
M2040800	FURNISHED EXCAVATION	CU M	140,080	140,080						
M2070400	POROUS GRANULAR EMBANKMENT, SPECIAL	CU M	353		181	172				
M2500200	SEEDING, CLASS 2	HA	4.2	4.2						
M2500400	NITROGEN FERTILIZER NUTRIENT	KG	420	420						
M2500500	PHOSPHORUS FERTILIZER NUTRIENT	KG	420	420						
M2500600	POTASSIUM FERTILIZER NUTRIENT	KG	420	420						
M2510115	MULCH, METHOD 2	HA	2.9	2.9						
M2510630	EROSION CONTROL BLANKET	SQ M	13101	13101						
M2800250	TEMPORARY EROSION CONTROL SEEDING	KG	1848	1848						
M2800400	PERIMETER EROSION BARRIER	METER	245	245						
M2800407	PERIMETER EROSION BARRIER, MODIFIED	METER	325	325						
M2810105	STONE RIPRAP, CLASS A3	SQ M	169		92	77				
M2810725	STONE DUMPED RIPRAP, CLASS B3	SQ M	282	282						
M2811840	RIPRAP FOR STILLING BASIN	M TON	204	204						
M2820200	FILTER FABRIC	SQ M	271	102	92	77				
M4021010	AGGREGATE SURFACE COURSE, TYPE B	M TON	2659	2659						
M5020100	STRUCTURE EXCAVATION	CU M	2203		1039	1164				
M5030280	CONCRETE ENCASEMENT	CU M	26.9		13.6	13.3				
M5030290	FORM LINER TEXTURED SURFACE	SQ M	168		86	82				
M5030350	CONCRETE STRUCTURES	CU M	1240.5		626.8	613.7				
M5030360	CONCRETE SUPERSTRUCTURE	CU M	631.5		307.2	324.3				

Rev. 6-3-09
Rev. 5-28-09

REVISIONS	
NAME	DATE

ILLINOIS DEPARTMENT OF TRANSPORTATION
SUMMARY OF QUANTITIES
FAP 310 (IL 255)
SECTION 60-15VB-1 & 2
MADISON COUNTY
DRAWN BY EBB
CHECKED BY
DATE

SUMMARY OF QUANTITIES

F.A.P. RTE.	SECTION	COUNTY	TOTAL SHEETS	SHEET NO.
310	60-15VB-1&2	MADISON	149	4
STA.	TO STA.			
FED. ROAD DIST. NO.	ILLINOIS FED. AID PROJECT			
CONTRACT NO. 76634				

SUMMARY OF QUANTITIES				CONSTRUCTION TYPE CODE						
CODE NO	ITEM	UNIT	TOTAL QUANTITIES	URBAN						
				1000	SEC 60-15VB-1 X171-5B	SEC 60-15VB-2 X171-5B	80% FEDERAL 20% STATE			
M5030390	BRIDGE DECK GROOVING	SQ M	2421		1181	1240				
M5030450	PROTECTIVE COAT	SQ M	2741		1339	1402				
M5050105	FURNISHING AND ERECTING STRUCTURAL STEEL	L SUM	1		0.5	0.5				
M5080205	REINFORCEMENT BARS, EPOXY COATED	KG	195870		86570	109300				
M5110100	SLOPE WALL 100 MM	SQ M	1611		779	832				
M5120176	FURNISHING METAL SHELL PILES 356MM X 6.35MM	METER	4126.0		1801.0	2325.0				
M5120335	DRIVING PILES	METER	4126.0		1801.0	2325.0				
M5120900	TEMPORARY SHEET PILING	SQ M	1496		767	729				
M5200225	PREFORMED JOINT STRIP SEAL	METER	90.6		46.0	44.6				
M5210022	ANCHOR BOLTS, M24	EACH	76		36	40				
M5210024	ANCHOR BOLTS, M36	EACH	80		36	44				
M542E148	PRECAST REINFORCED CONCRETE FLARED END SECTIONS 1050MM	EACH	2	2						
M542E152	PRECAST REINFORCED CONCRETE FLARED END SECTIONS 1200MM	EACH	2	2						
M542E168	PRECAST REINFORCED CONCRETE FLARED END SECTIONS 1800MM	EACH	2	2						
M542T215	PIPE CULVERTS, CLASS C, TYPE 1 300MM (TEMPORARY)	METER	51.5	51.5						
M5429760	PIPE CULVERTS, TYPE 7 RCCP 1500MM	METER	113.0	113.0						
M5870300	CONCRETE SEALER	SQ M	292		149	143				
M5910100	GEOCOMPOSITE WALL DRAIN	SQ M	193		98	95				
M5930100	CONTROLLED LOW-STRENGTH MATERIAL	CU M	7	7						
M6011100	PIPE UNDERDRAINS FOR STRUCTURES 100MM	METER	144.9		71.1	73.8				
MX033777	PIPE CULVERTS, TYPE 5 RCCP 1050MM (JACKED)	METER	28.5	28.5						
MX033778	PIPE CULVERTS, TYPE 5 RCCP 1200MM (JACKED)	METER	29.0	29.0						
20070600	TRAINERS	HR	3000	3000						
M542E248	STEEL END SECTIONS 1050 MM	EACH	2	2						
M542E252	STEEL END SECTIONS 1200 MM	EACH	2	2						
MX030575	STEEL CASING PIPE BORED AND JACKED 1050 MM	METER	30.5	30.5						
MX030576	STEEL CASING PIPE BORED AND JACKED 1200 MM	METER	30.5	30.5						
M6060290	CONCRETE GUTTER, TYPE B	METER	50		28	22				
M203105	MECHANICALLY STABILIZED EARTH RETAINING WALL	SQ M	501	501						
* M2054517	ROCKFILL - FOUNDATION	M TON	2218	2218						

© 2000
* Specialty Item

REVISIONS		ILLINOIS DEPARTMENT OF TRANSPORTATION SUMMARY OF QUANTITIES FAP 310 (IL 255) SECTION 60-15VB-1 & 2 MADISON COUNTY DRAWN BY EBB CHECKED BY
NAME	DATE	

Rev. 6-3-09
Rev. 5-18-09

Note:
Work these sheets with design drawings (149 total sheets)
prepared by Klinger & Associates, P.C.

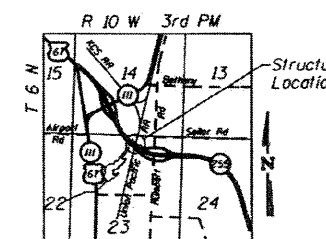
GENERAL NOTES

All edges shall have 20 mm chamfer unless otherwise noted.
All dimensions are in millimeters (mm) except as noted.
Reinforcement bars shall conform to the requirements of
ASTM A706, Gr. 400.

TOTAL BILL OF MATERIAL

ITEM	UNIT	SUPER	SUB	TOTAL
MSE Retaining Wall	SO. M		501	501
Structure Excavation	CU. M		120	120
Rockfill - Foundation	M. Ton		2,218	2,218
Agg. Surface Course Type B	M. Ton		590	590
Concrete Gutter Type B	M		50	50
Furnished Excavation	CU. M		(6,085)	(6,085)
Slopewall 100 mm	SQ. M		(624)	(624)

Note:
The (XXX) quantities above indicate a reduction of the amount shown from the
quantities of furnished excavation shown on sheet 7 of 149 and slopewall 100 mm
shown on sheets 33 and 69 of 149.



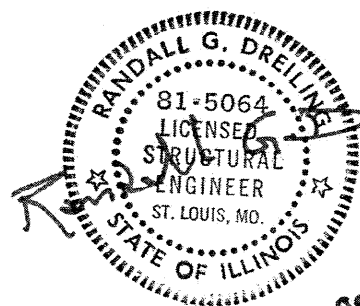
LOCATION SKETCH

**GENERAL LAYOUT
MSE WALL
FAP RTE 310 (IL RTE 255) OVER
UNION PACIFIC & KANSAS CITY SOUTHERN R.R.
SECTION 60-15VB-1 & 2
MADISON COUNTY
S.N. 060-0310 & 060-0311**

SHEET NO. 1	F.A. RTE.	SECTION	COUNTY	TOTAL SHEETS	SHEET NO.
4 SHEETS	310	60-15VB-1 & 2	MADISON	149	31A
FED. ROAD DIST. NO.			ILLINOIS FED. AID PROJECT		
CONTRACT NO.					

INDEX OF SHEETS

- 1 General Layout, MSE Wall
- 2 Plan and Elevation, MSE Wall
- 3 Details, MSE Wall
- 4 Details, MSE Wall



06-03-09

Randall G. Dreiling Date
Licensed Structural Engineer
State of Illinois No. 081-005064
License Expires 11/30/10

DESIGN STRESSES

FIELD UNITS
 $f'_c = 24 \text{ MPa}$
 $f_y = 400 \text{ MPa}$ (Reinforcement)
PRECAST UNITS
 $f'_c = 31 \text{ MPa}$ (Precast Panels)

DESIGN SPECIFICATIONS

2002 AASHTO Standard Specifications

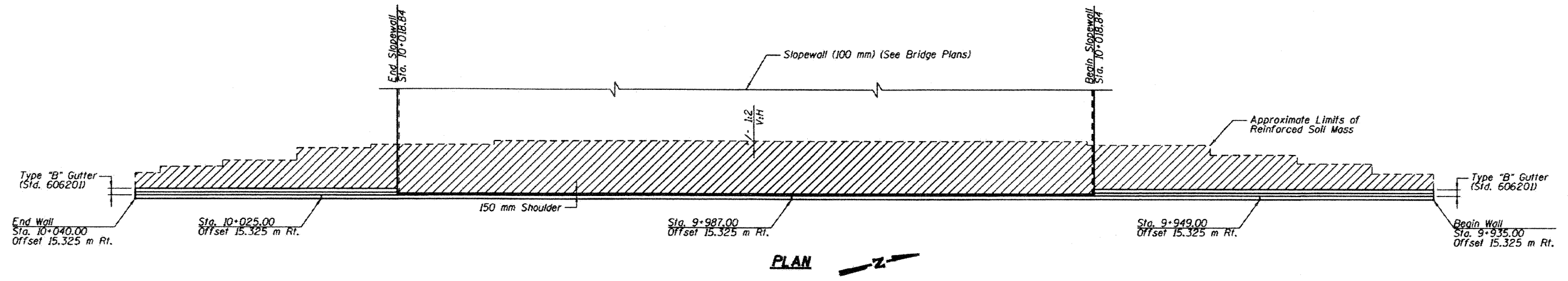
APPROVED
For Structural Adequacy Only

Ralph E. Anderson
Engineer of Bridges & Structures

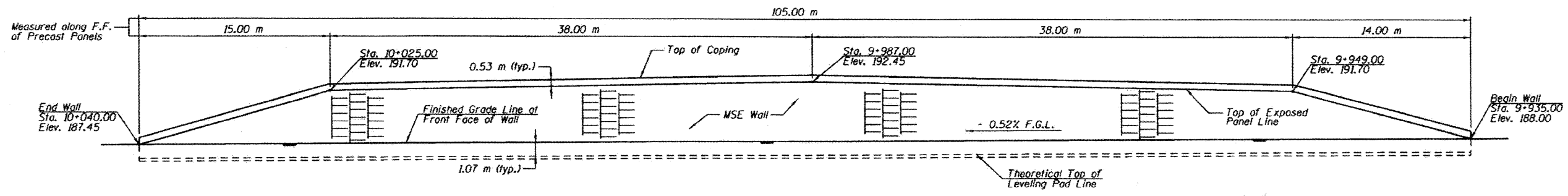
PLAN

DESIGNED	RGD
CHECKED	WJF
DRAWN	MEC
CHECKED	RGD

DESIGN NINE
11500 TESSON FERRY ROAD
SUITE 100
ST. LOUIS, MISSOURI 63123
(314) 729-7800
ENGINEERING SERVICES FOR RAILROAD AND INDUSTRY



Note:
 Wall offsets are measured from C. of Existing Kansas City Southern Railway track to the front face of the precast panels.
 Prior to placement of slopewall, adjust grading to meet C.I.P. coping to facilitate drainage along shoulder.

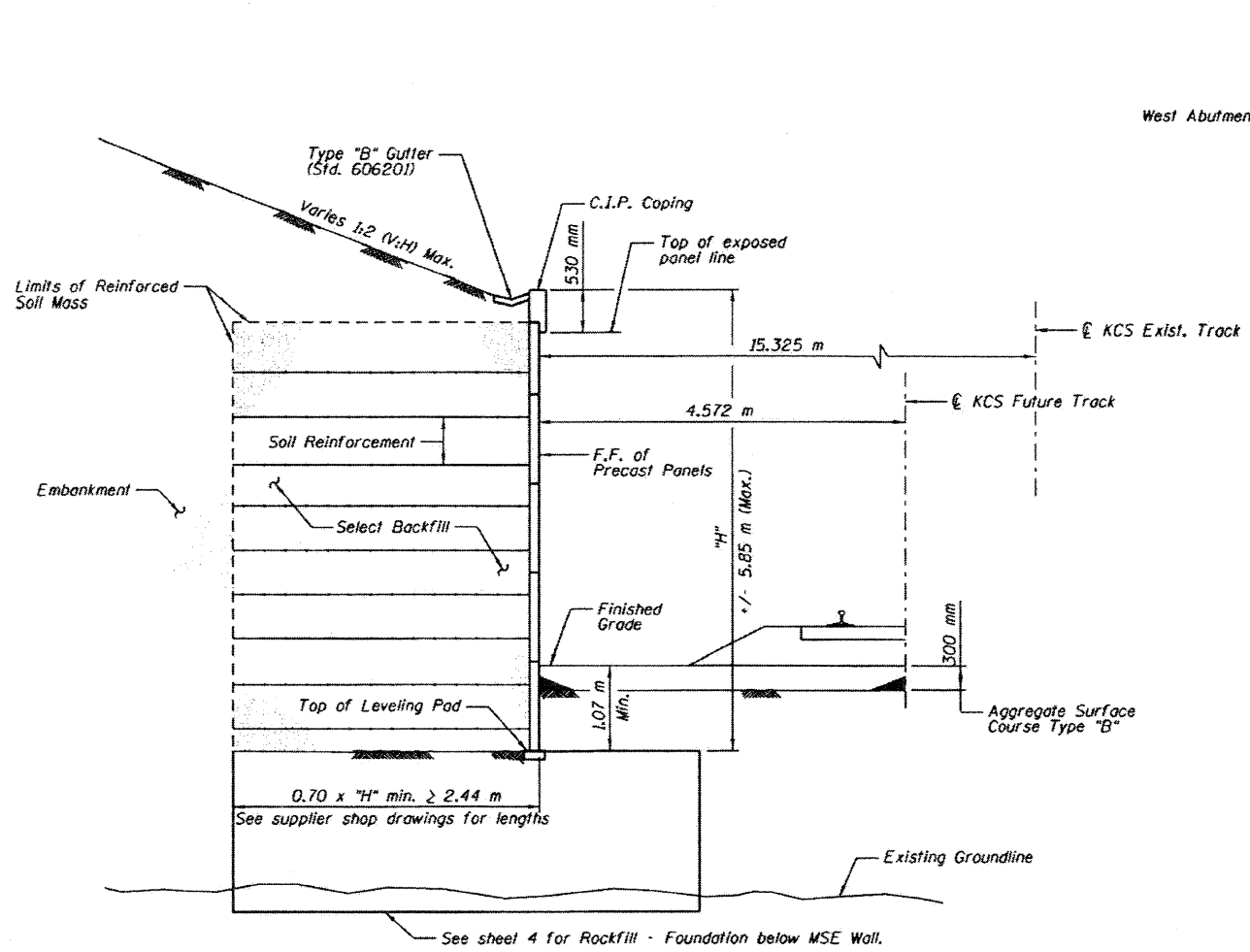


Note:
 F.F. = Front Face
 F.G.L. = Finished Grade Line

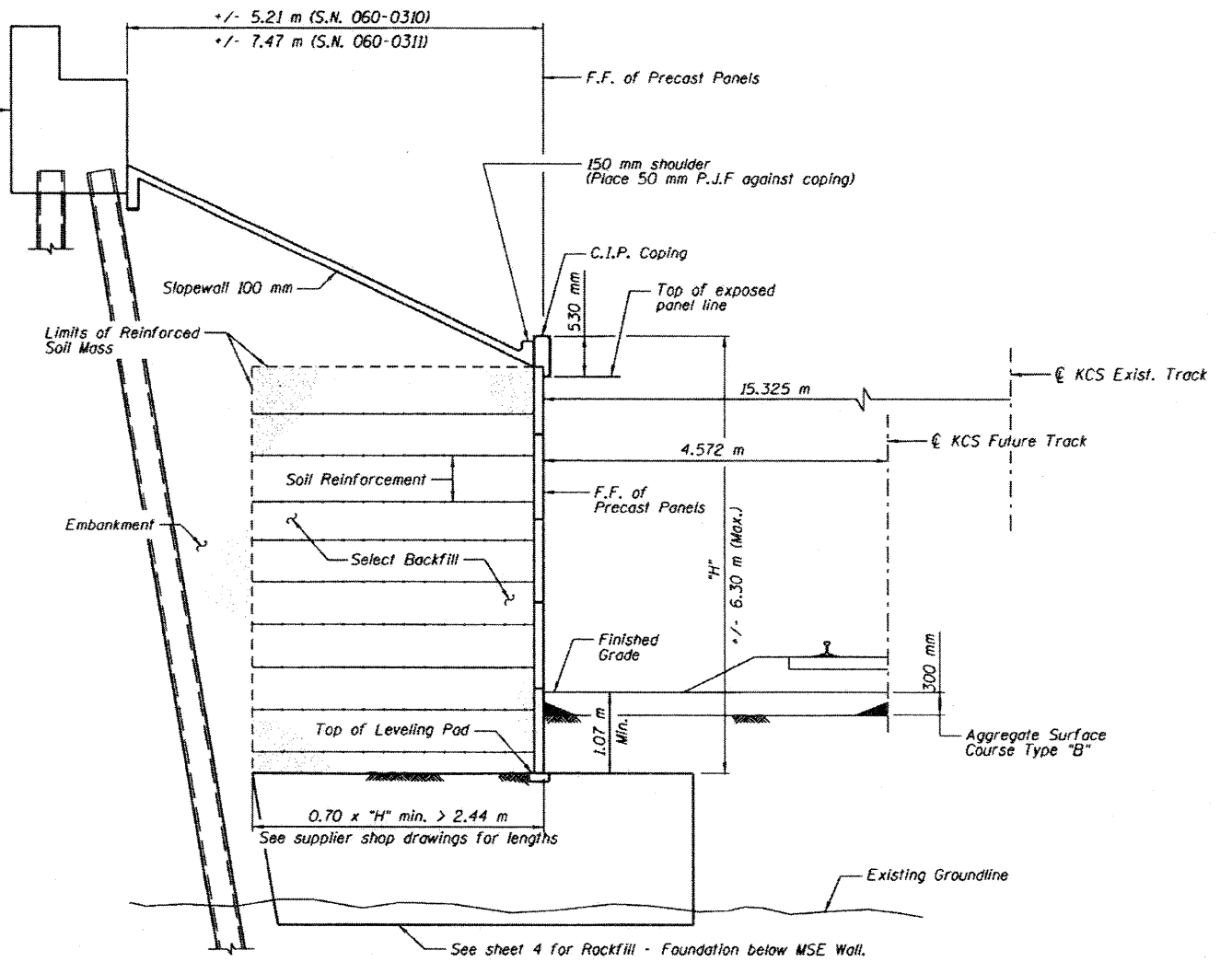
**PLAN AND ELEVATION
 MSE WALL
 FAP RTE 310 (IL RTE 255) OVER
 UNION PACIFIC & KANSAS CITY SOUTHERN R.R.
 SECTION 60-15VB-1 & 2
 MADISON COUNTY
 S.N. 060-0310 & 060-0311**

DESIGNED	RGD
CHECKED	WJF
DRAWN	MEC
CHECKED	RGD

SHEET NO. 2	F.A. RTE.	SECTION	COUNTY	TOTAL SHEETS	SHEET NO.
	310	60-15VB-1 & 2	MADISON	149	31B
4 SHEETS	CONTRACT NO.				
FED. ROAD DIST. NO.		ILLINOIS FED. AID PROJECT			



TYPICAL WALL SECTION - OUTSIDE OF SLOPEWALL
(Looking North)

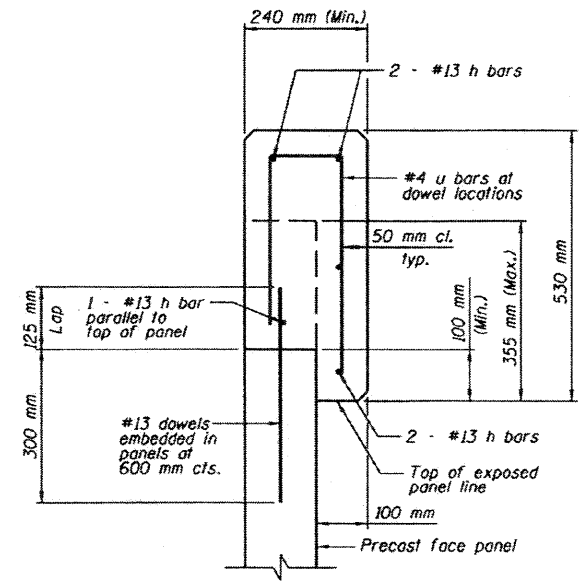
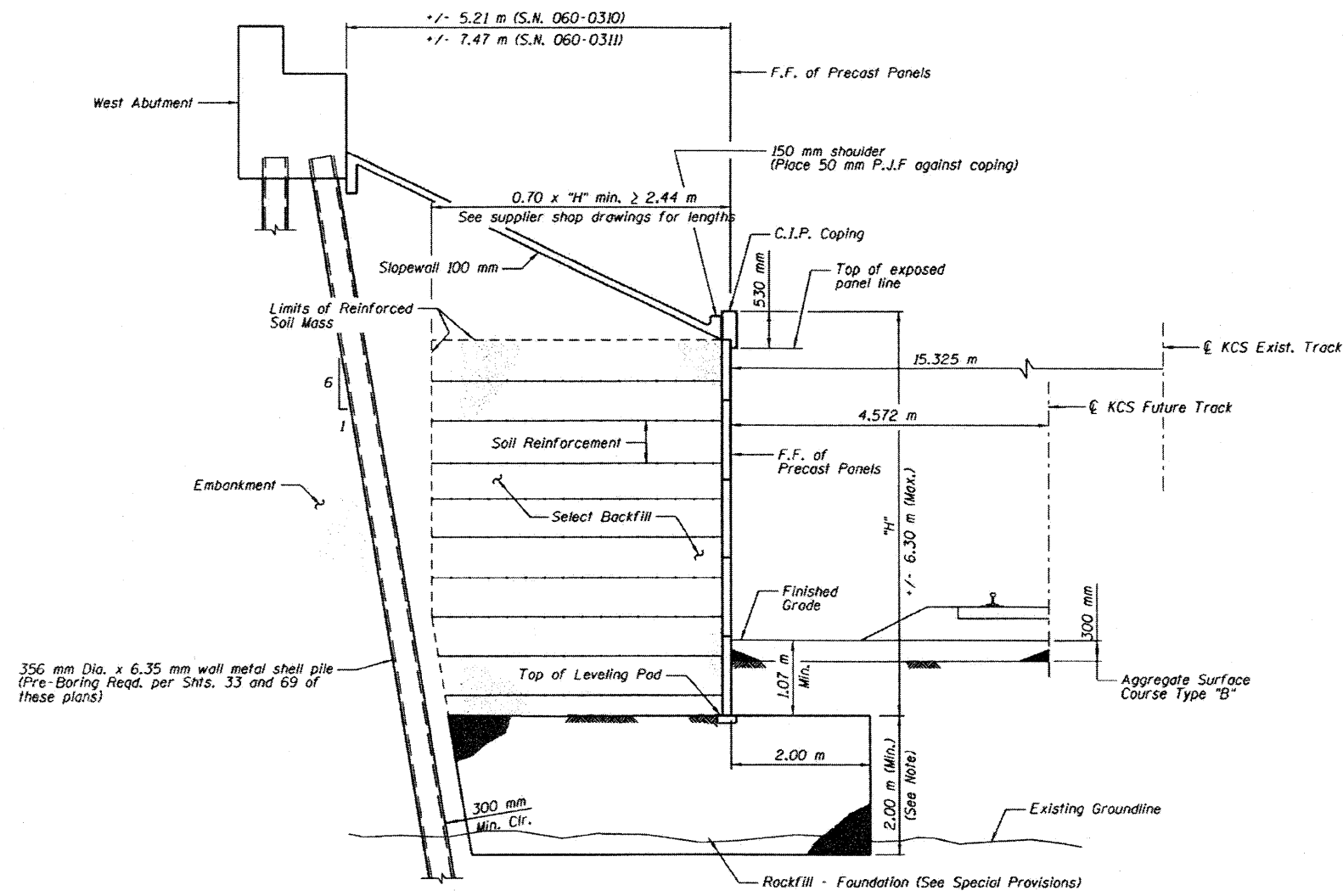


TYPICAL WALL SECTION - WITHIN SLOPEWALL
(Looking North)

DETAILS
MSE WALL
FAP RTE 310 (IL RTE 255) OVER
UNION PACIFIC & KANSAS CITY SOUTHERN R.R.
SECTION 60-15VB-1 & 2
MADISON COUNTY
S.N. 060-0310 & 060-0311

DESIGNED	RGD
CHECKED	WJF
DRAWN	MEC
CHECKED	RGD

SHEET NO. 3	F.A. RTE.	SECTION	COUNTY	TOTAL SHEETS	SHEET NO.
	310	60-15VB-1 & 2	MADISON	149	31C
4 SHEETS	CONTRACT NO.				
FED. ROAD DIST. NO.		ILLINOIS	FED. AID PROJECT		



CAST IN PLACE COPING FOR PRECAST FACE PANELS DETAIL

TYPICAL WALL SECTION AT ABUTMENT PILING
(Looking North)

Note:
 If existing groundline is less than 2 m below top of leveling pad, then Rockfill - Foundation shall extend 2 m below top of pad. If existing groundline is more than 2 m below top of leveling pad, then the Rockfill - Foundation shall extend to a minimum depth of 300 mm below existing groundline.
 It is desired that the Rockfill - Foundation extend 2 m beyond the length of the soil reinforcements. However, as noted below, this may need to be revised.
 Contractor shall carefully determine theoretical location of batter piles in regard to location of desired Rockfill - Foundation and soil reinforcements. Wall system supplier may choose to design soil reinforcement less than 0.7xH in length to provide minimum clear distance from piling. Rockfill - Foundation limits beyond soil reinforcements may need to be reduced or truncated to provide minimum clear distance from piling.
 Contractor may consider altering the pre-boring depths indicated on sheets 33 and 69 of 149 to insure that the piling, when driven, will not damage the soil reinforcements or be damaged by impact with the installed Rockfill - Foundation.

DETAILS
MSE WALL
FAP RTE 310 (IL RTE 255) OVER
UNION PACIFIC & KANSAS CITY SOUTHERN R.R.
SECTION 60-15VB-1 & 2
MADISON COUNTY
S.N. 060-0310 & 060-0311

DESIGNED	RGD
CHECKED	WJF
DRAWN	MEC
CHECKED	RGD

SHEET NO. 4	F.A. RTE.	SECTION	COUNTY	TOTAL SHEETS	SHEET NO.
4 SHEETS	310	60-15VB-1 & 2	MADISON	149	31D
CONTRACT NO.					
FED. ROAD DIST. NO.		ILLINOIS FED. AID PROJECT			