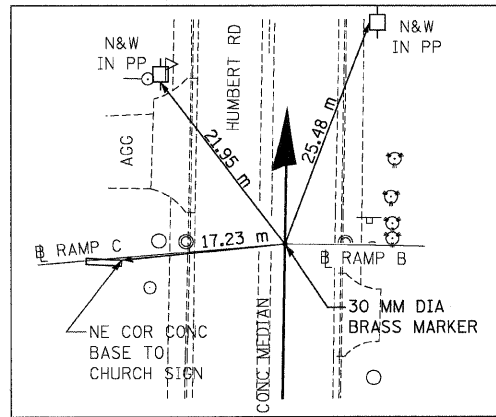
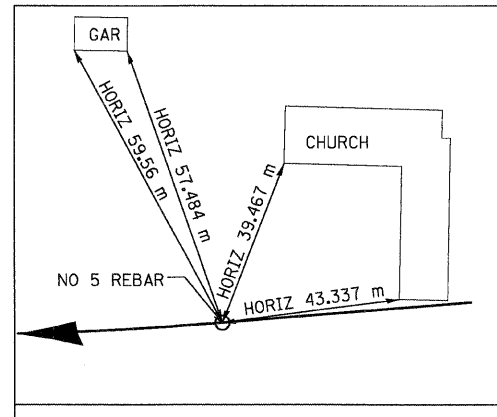


F.A.P. RTE.	SECTION	COUNTY	TOTAL SHEETS	SHEET NO.
310	60-15VB-1&2	MADISON	149	12
STA. TO STA.		FED. AID PROJECT		
FED. ROAD DIST. NO.		ILLINOIS		
CONTRACT NO. 76634				



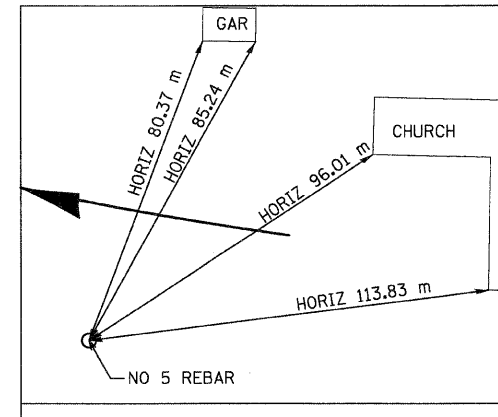
RAMP 'C' POT STA 0+000.000

N 255,082.7092 E 698,830.4566



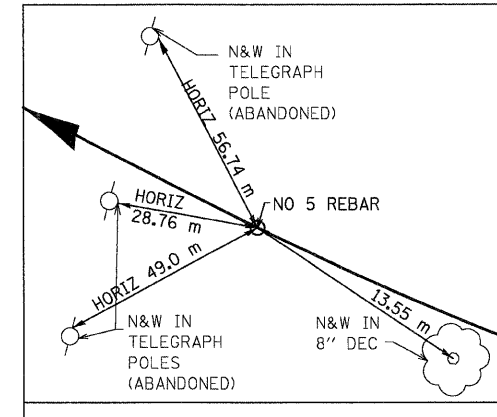
RAMP 'C' PC STA 0+134.033

N 255,071.6562 E 698,696.8803



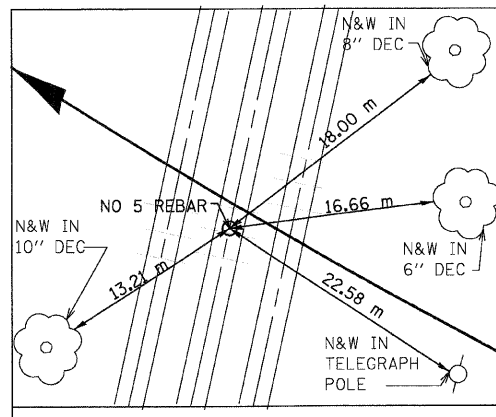
RAMP 'C' PI STA 0+204.522

N 255,065.8432 E 698,626.6310



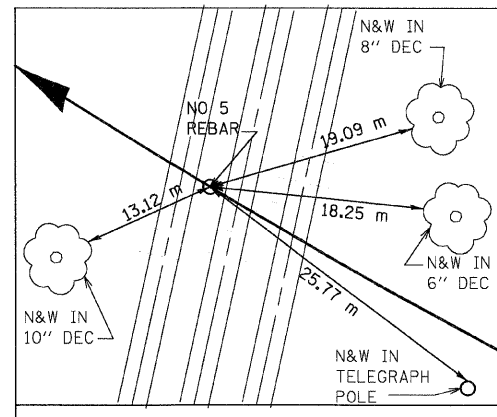
RAMP 'C' PCC STA 0+271.577

N 255,096.9365 E 698,563.3699



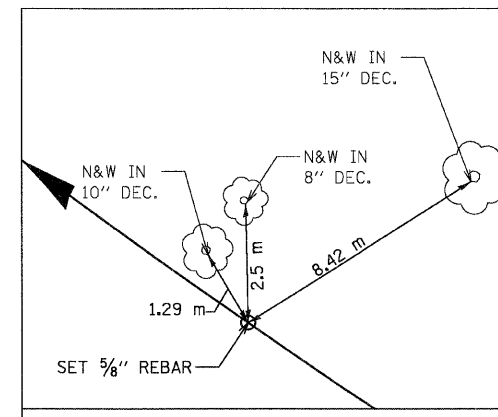
RAMP 'C' PI STA 0+312.778

N 255,115.1106 E 698,526.3936



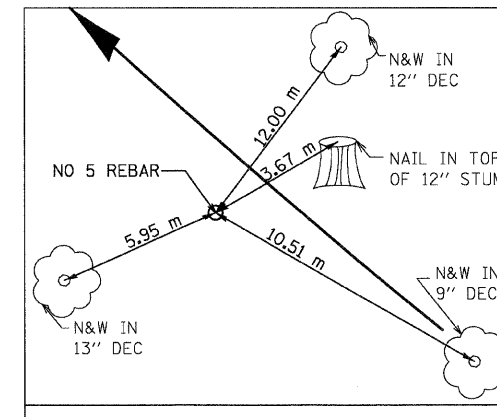
RAMP 'C' POT STA 0+315.500

N 255,117.9366 E 698,524.8069



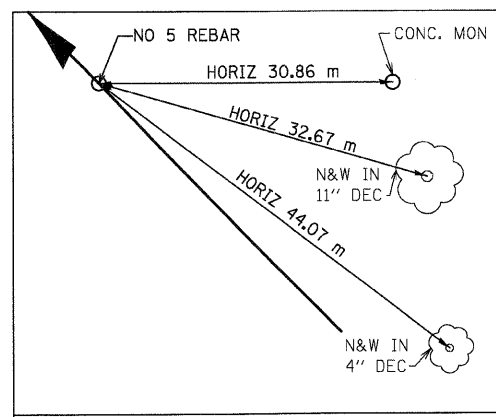
RAMP 'C' PCC STA 0+353.81

N 255,138.8303 E 698,492.7051



RAMP 'C' PI STA 0+431.510

N 255,183.5622 E 698,429.1737



RAMP 'C' PT STA 0+508.671

N 255,240.2246 E 698,376.0084

NOTES:

- 1) DIMENSIONS LABELED "HORIZ" ARE HORIZONTAL PULLS.
- 2) DIMENSIONS NOT LABELED "HORIZ" ARE DIRECT PULLS.



(TYP ALL TIES THIS DWG)

REVISIONS	
NAME	DATE

ILLINOIS DEPARTMENT OF TRANSPORTATION
HORIZONTAL CONTROL TIES
FAP 310 (IL 255)
SECTION 60-15VB-1&2
MADISON COUNTY

DRAWN BY CES
CHECKED BY

DATE