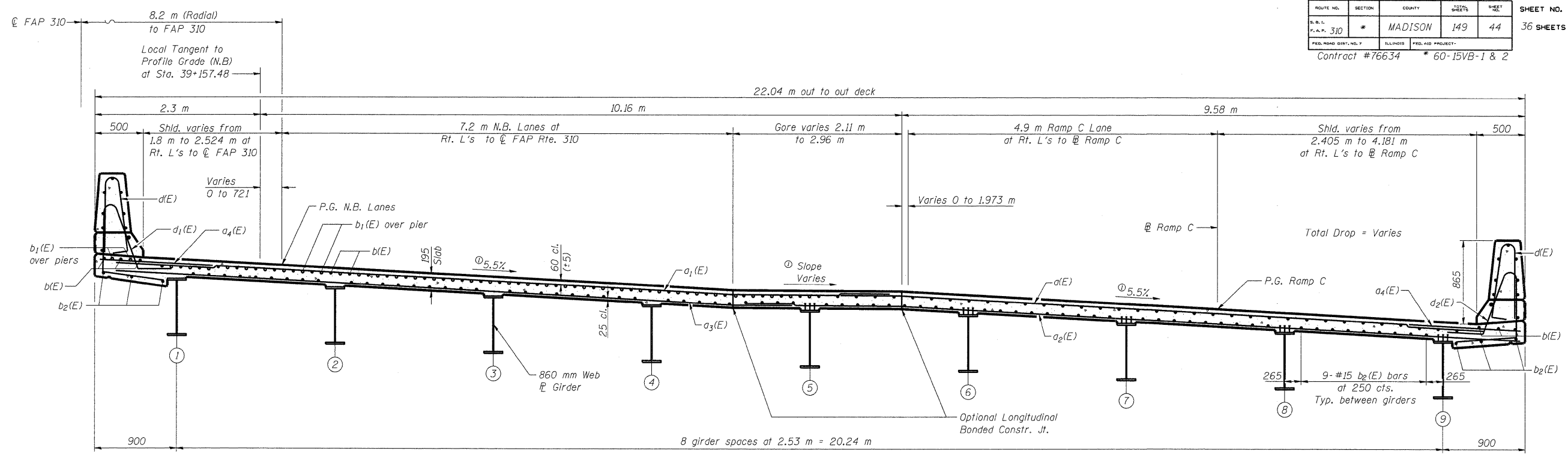


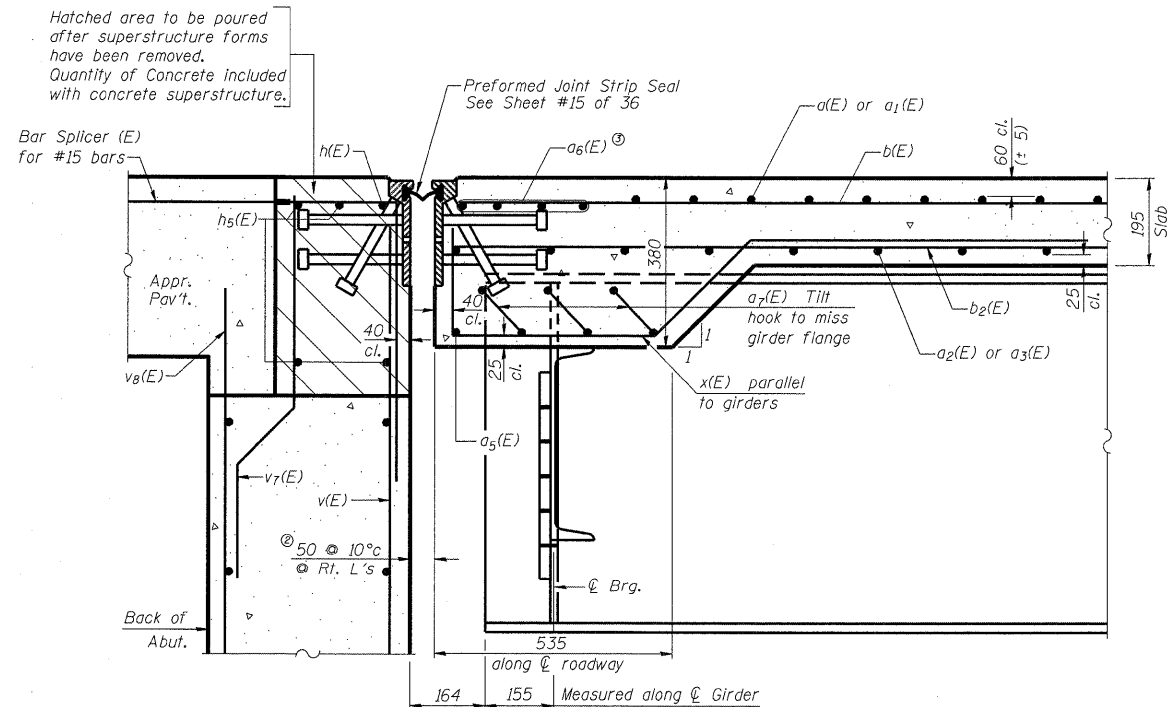
10:38:58 AM
5/7/2009

ROUTE NO.	SECTION	COUNTY	SHEETS	SHEET NO.
S.B.L. F.A.P. 310	*	MADISON	149	44
FED. ROAD DIST. NO. 7		ILLINOIS	FED. AID PROJECT	
			Contract #76634 * 60-15VB-1 & 2	



CROSS SECTION THRU DECK
(Looking West)

(All dimensions are at Rt. L's to Local Tangent at Sta. 39+157.48, unless noted)



SECTION A-A

At East and West Abutments

- Note:
- ⊙ $a_5(E)$, $a_6(E)$ and $a_7(E)$ bars placed along skew.
 - ⊙ Dimensions are based on a Rolled Rail Strip Seal Joint. If the Contractor elects to use the Welded Rail Strip Seal Joint, deck dimensions may require adjustments to satisfy the details on Sheet #15 of 36.
 - ⊙ $a_6(E)$ bars at 100 mm spacing. Place under longitudinal bars.

DESIGNED	ADL
CHECKED	WLW
DRAWN	ADL/DGM
CHECKED	WLW

SUPERSTRUCTURE DETAILS
FAP RTE. 310 (IL RTE. 255) NB & RAMP C OVER
UNION PACIFIC & KANSAS CITY SOUTHERN R.R.
SECTION 60-15VB-1 & 2
MADISON COUNTY
STATION 39+160.297
STRUCTURE NUMBER 060-0310

Klingner & Assoc., P.C.

p:\001\les 1000024\cra1-road-bridge\SN060-0310 Plans\060-0310superstructures.dgn