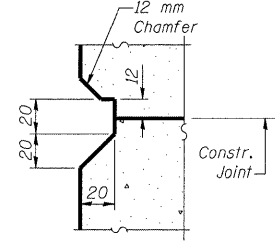
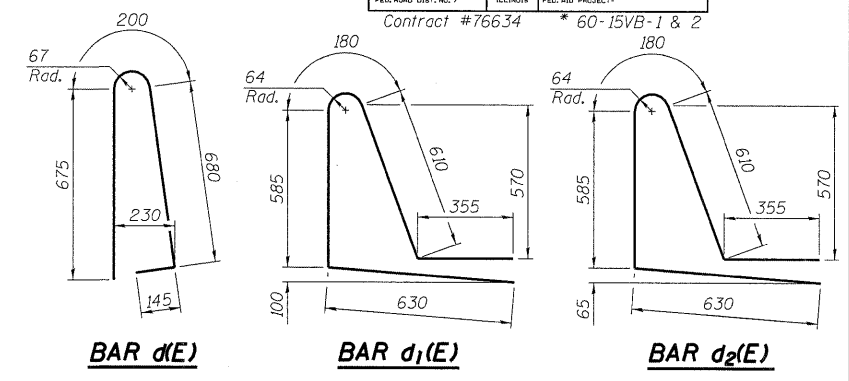
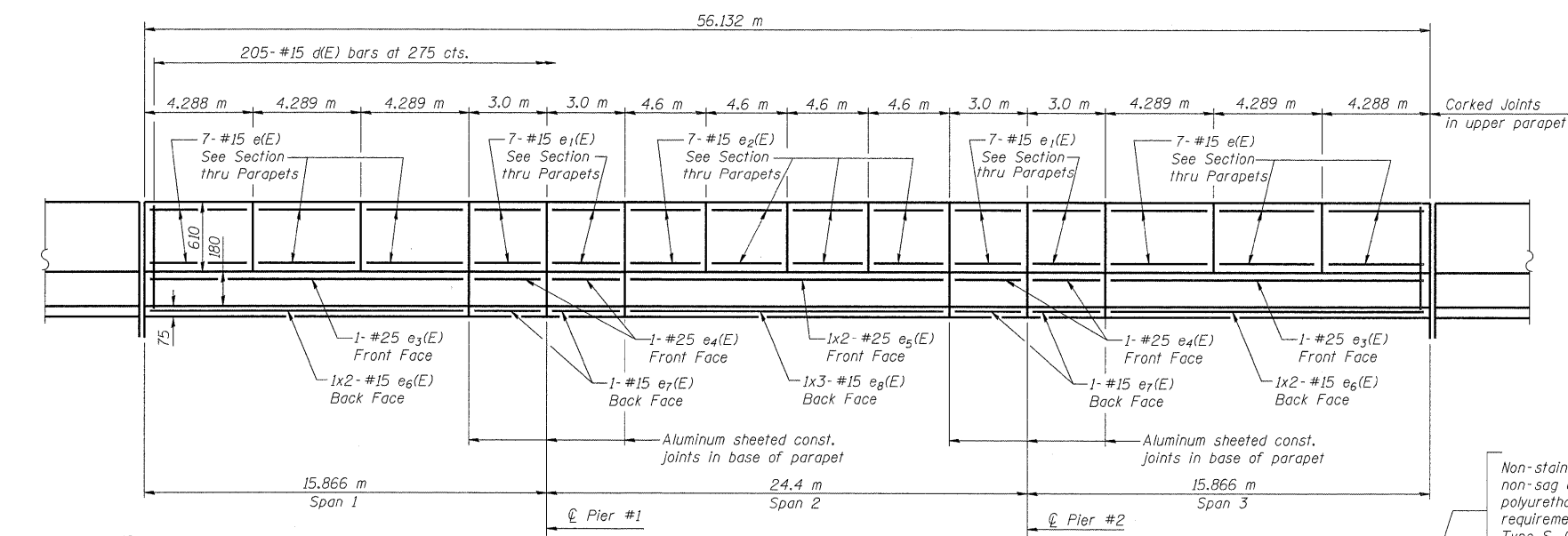


10:36:28 AM
 p:\00f\les\002024\cfa\road-bridge\SN060-0310\superstructures.dgn

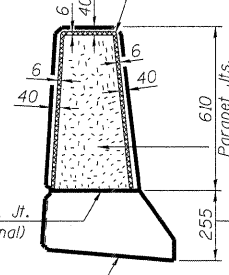
ROUTE NO.	SECTION	COUNTY	SHEETS	SHEET NO.
R.A.P. 310	*	MADISON	149	45
FED. ROAD DIST. NO. 7		ILLINOIS	FED. AID PROJECT	
			Contract #76634 * 60-15VB-1 & 2	



INSIDE ELEVATION OF PARAPETS

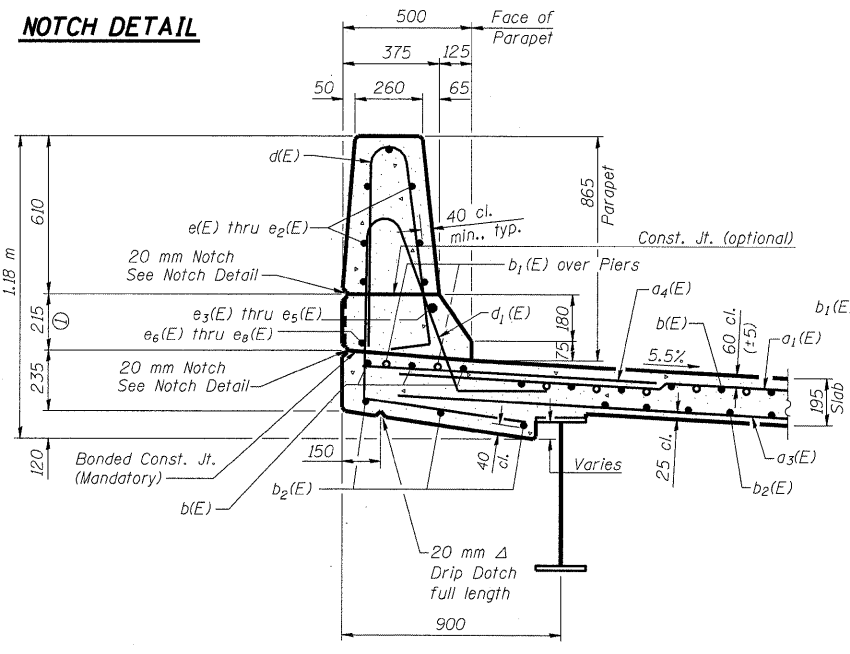
Min. Bar Lap
 #15 bars-640
 #25 bars-1.32 m

Non-staining gray one component non-sag elastomeric gun grade polyurethane sealant meeting the requirements of ASTM C-920, Type S, Grade NS, Class 25. Use T with a 16 mm backer Rod



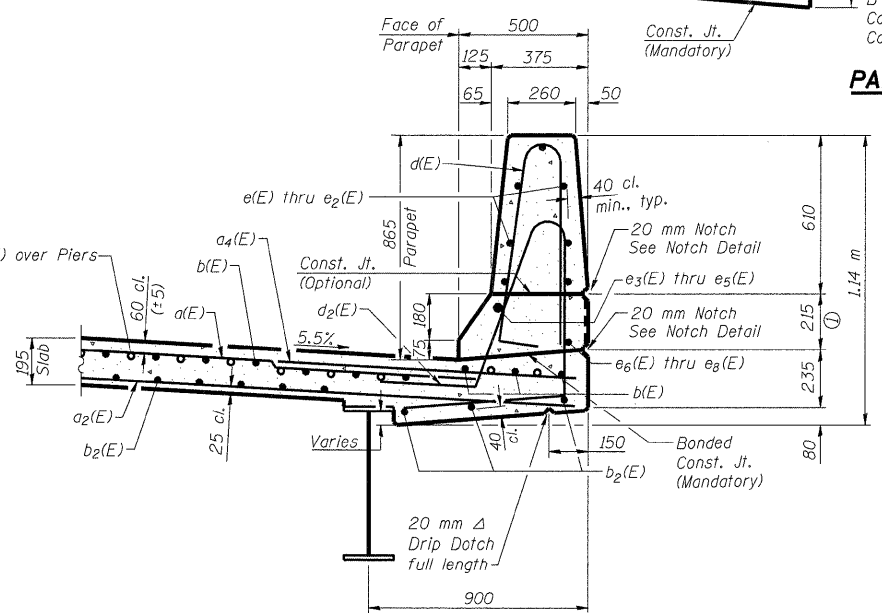
PARAPET JOINT DETAILS

Const. Jts. at Piers
 3 mm Aluminum sheet ASTM B 209 alloy 3003-H14. Cost included with Concrete Superstructure



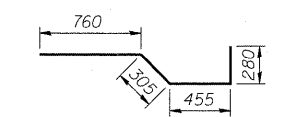
SECTION THRU SOUTH PARAPET

Ⓞ Patterned Rope Texture Concrete. See Sheet #4 of 36 for details.

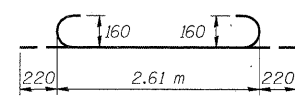


SECTION THRU NORTH PARAPET

Ⓞ Patterned Rope Texture Concrete. See Sheet #4 of 36 for details.



BAR x(E)



a7(E) BAR

SUPERSTRUCTURE BILL OF MATERIAL

Bar	No.	Size	Length (m)	Shape
a(E)	429	#15	10.40	—
a1(E)	429	#15	12.00	—
a2(E)	293	#15	11.80	—
a3(E)	293	#15	10.60	—
a4(E)	428	#20	1.80	—
a5(E)	4	#20	11.95	—
a6(E)	24	#25	8.95	—
a7(E)	48	#20	3.05	—
b(E)	532	#15	8.60	—
b1(E)	146	#20	13.20	—
b2(E)	468	#15	9.90	—
d(E)	410	#15	1.70	—
d1(E)	205	#15	2.36	—
d2(E)	205	#15	2.36	—
e(E)	84	#15	4.20	—
e1(E)	56	#15	2.91	—
e2(E)	56	#15	4.51	—
e3(E)	4	#25	12.78	—
e4(E)	8	#25	2.92	—
e5(E)	4	#25	9.84	—
e6(E)	8	#15	6.73	—
e7(E)	8	#15	2.92	—
e8(E)	6	#15	6.47	—
x(E)	128	#15	1.80	—
Reinforcement Bars, Epoxy Coated	kg		52,310	
Concrete Superstructure	m ³		307.2	
Bridge Deck Grooving	m ²		1,181	
Protective Coat	m ²		1,339	
Form Liner Textured Surface	m ²		24	

Bars indicated thus 1 x 5-#15 etc. indicates 1 line of bars with 5 lengths per line.

SUPERSTRUCTURE DETAILS
 FAP RTE. 310 (IL RTE. 255) NB & RAMP C OVER
 UNION PACIFIC & KANSAS CITY SOUTHERN R.R.
 SECTION 60-15VB-1 & 2
 MADISON COUNTY
 STATION 39+160.297
 STRUCTURE NUMBER 060-0310