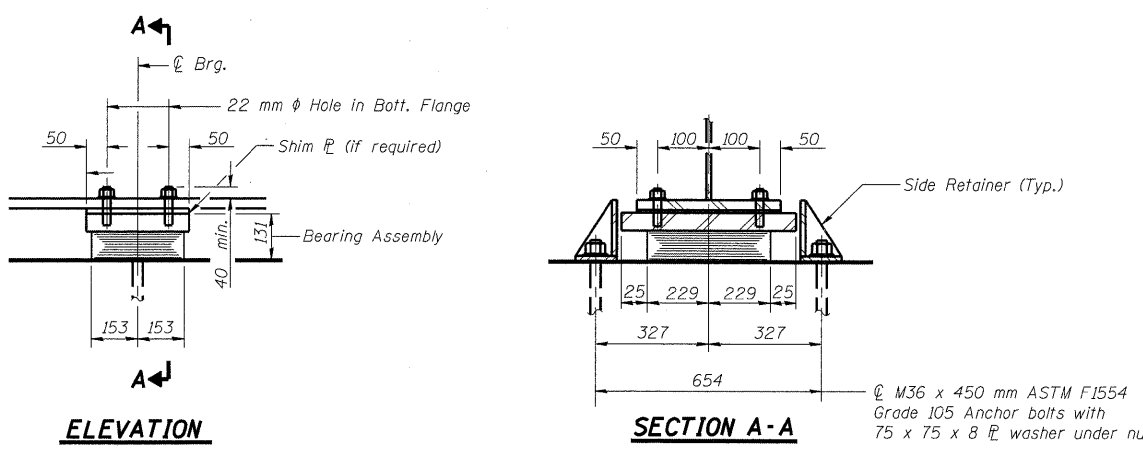
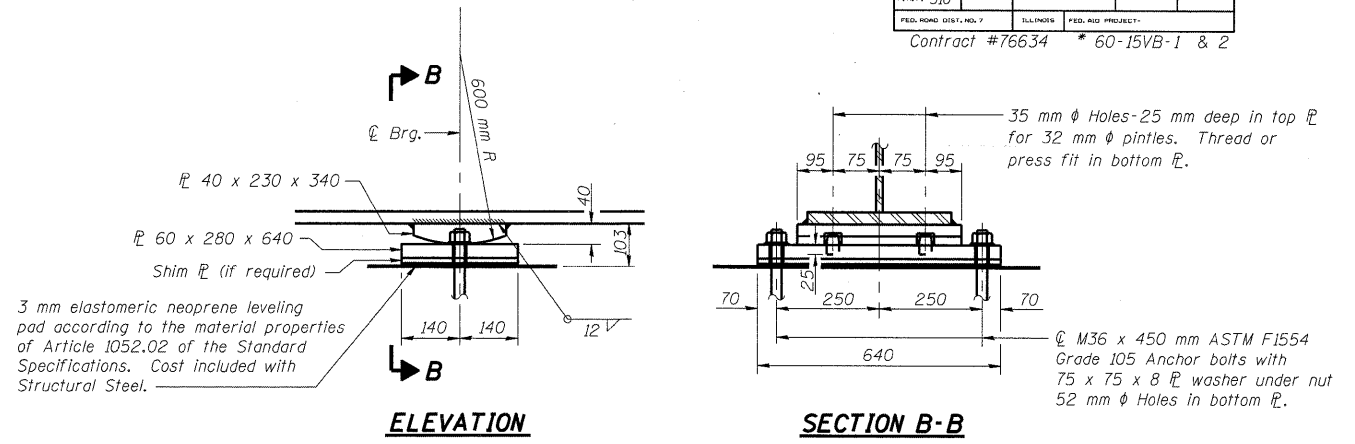


5/7/2009 10:31:58 AM
 P:\00F:\res\000024\refa\road-bridge\SN060-0310\Plans\060-0310girders.dgn

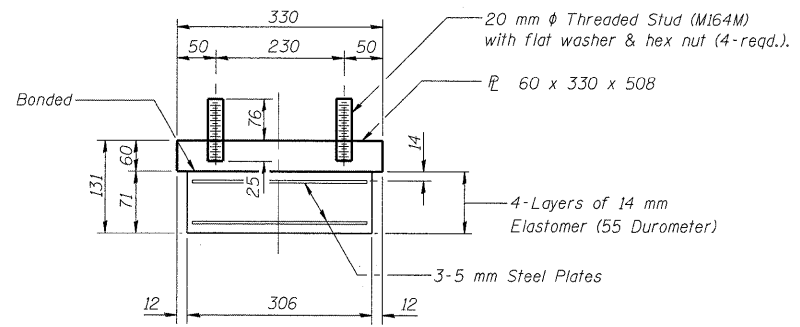
ROUTE NO.	SECTION	COUNTY	SHEET	SHEET	SHEET NO.
F.A.P. 310	*	MADISON	149	50	19
Contract #76634 * 60-15VB-1 & 2					36 SHEETS



TYPE I ELASTOMERIC EXP. BRG. - PIER #2

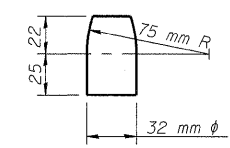


FIXED BEARING - PIER #1
(9-Req'd)

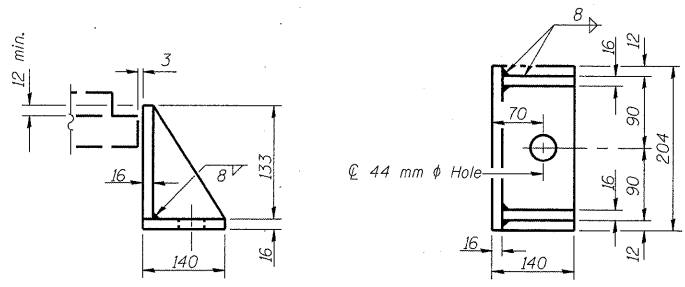


BEARING ASSEMBLY - PIER #2
(9-Req'd)

Note: Shim plates shall not be placed under Bearing Assembly.



Notes:
See sheet #18 of 36 for Bill of Material
See sheet #18 of 36 for more notes.



SIDE RETAINER - PIER #2
Equivalent rolled angle with stiffeners will be allowed in lieu of welded plates.
(18-Req'd)

DESIGNED	ADL
CHECKED	WLW
DRAWN	ADL/DGM
CHECKED	WLW

I-2-E1 (M) 4-30-99

BEARING DETAILS
FAP RTE. 310 (IL RTE. 255) NB & RAMP C OVER
UNION PACIFIC & KANSAS CITY SOUTHERN R.R.
SECTION 60-15VB-1 & 2
MADISON COUNTY
STATION 39+160.297
STRUCTURE NUMBER 060-0310

Klingner & Assoc., P.C.