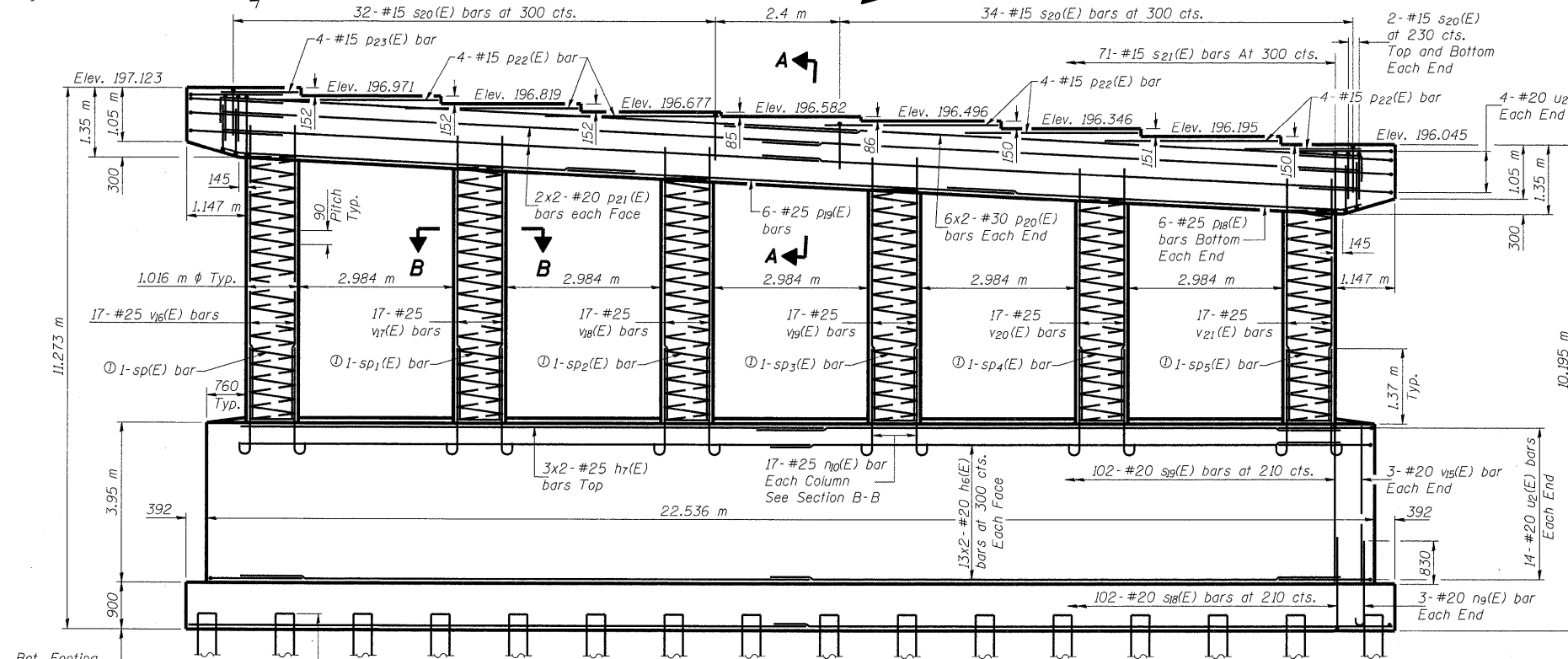
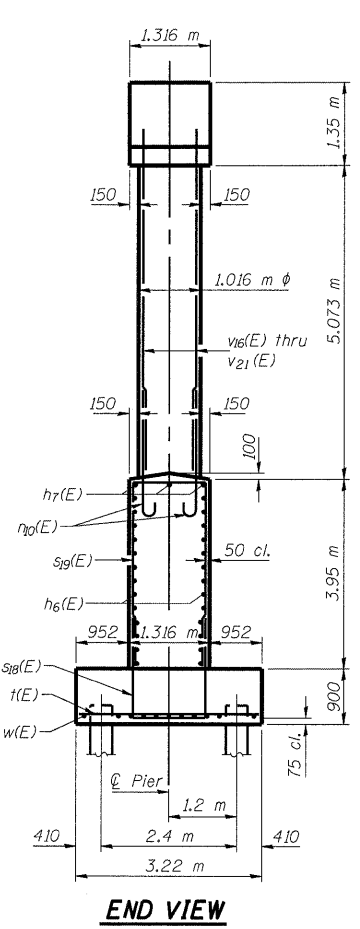
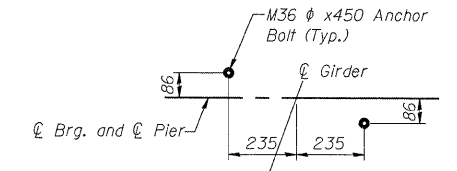
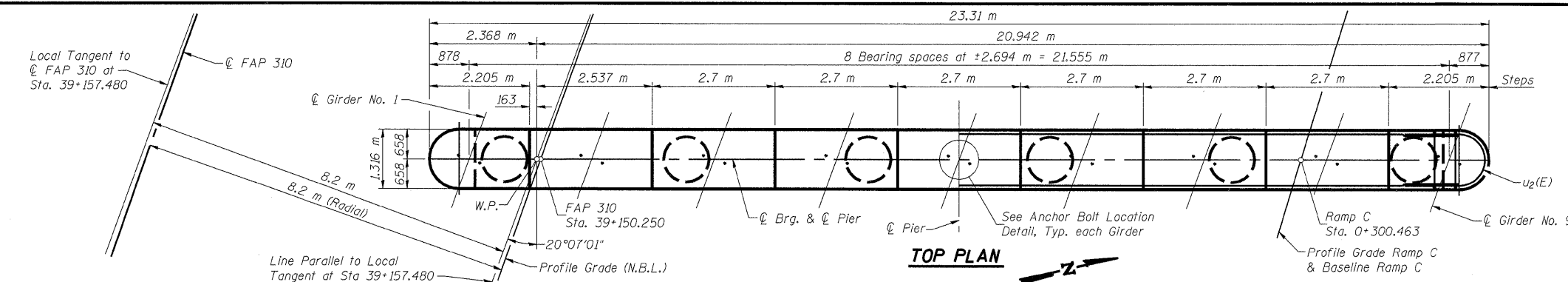


ROUTE NO.	SECTION	COUNTY	SHEETS	SHEET	SHEET NO. 28
R.R. 310	#	MADISON	149	59	36 SHEETS
FED. ROAD DIST. NO. 7		SUBMITTER	FED. AID PROJECT:		
			Contract #76634		* 60-15VB-1 & 2



Notes:

Work this sheet with sheet #29 of 36.

Space reinforcement in cap to miss anchor bolts.

Pour steps monolithically with cap.

All edges shall have standard 20 mm chamfer except as noted.

Minimum Spiral lap = 800 mm.

Spiral Laps not included in Bill of Materials.

Cost of Spiral Laps and #15 spacers shall be included in cost of "Reinforcement Bars, Epoxy Coated".

See sheet #29 of 36 for bar details.

See sheet #29 of 36 for Sections A-A.

See sheet #29 of 36 for Sections B-B.

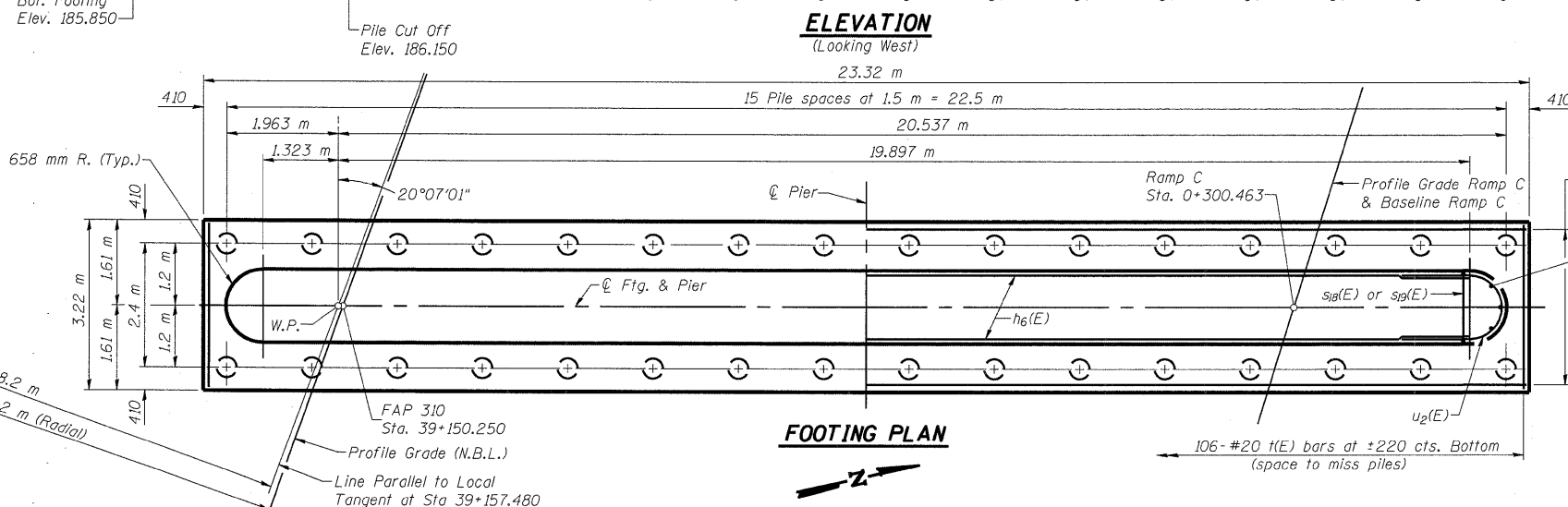
Pier protection crash wall design complies with the requirements of AREMA Chapter 8, Part 2, Section 2.1.5.1.

**PILE DATA**

Type & Size:	Metal Shell - 356 mm φ x 6.35 mm walls
Nominal Required Bearing:	1500 kN
Allowable Resistance Available:	500 kN
Est. Length:	16.0 m
No. Required:	32

Spirals:

① Provide 1½ extra turns top and bottom. Extend spiral 50 mm into pier cap. Provide 4-#15 spacers or equivalent.



**PIER #1**

FAP RTE. 310 (IL RTE. 255) NB & RAMP C OVER UNION PACIFIC & KANSAS CITY SOUTHERN R.R.

SECTION 60-15VB-1 & 2

MADISON COUNTY

STATION 39+160.297

STRUCTURE NUMBER 060-0310

p:\007\1es\000024\cra\road-br\idge\SN060-0310\PIER-01.dgn

DESIGNED	ADL
CHECKED	WLW
DRAWN	RLW/ADL
CHECKED	WLW