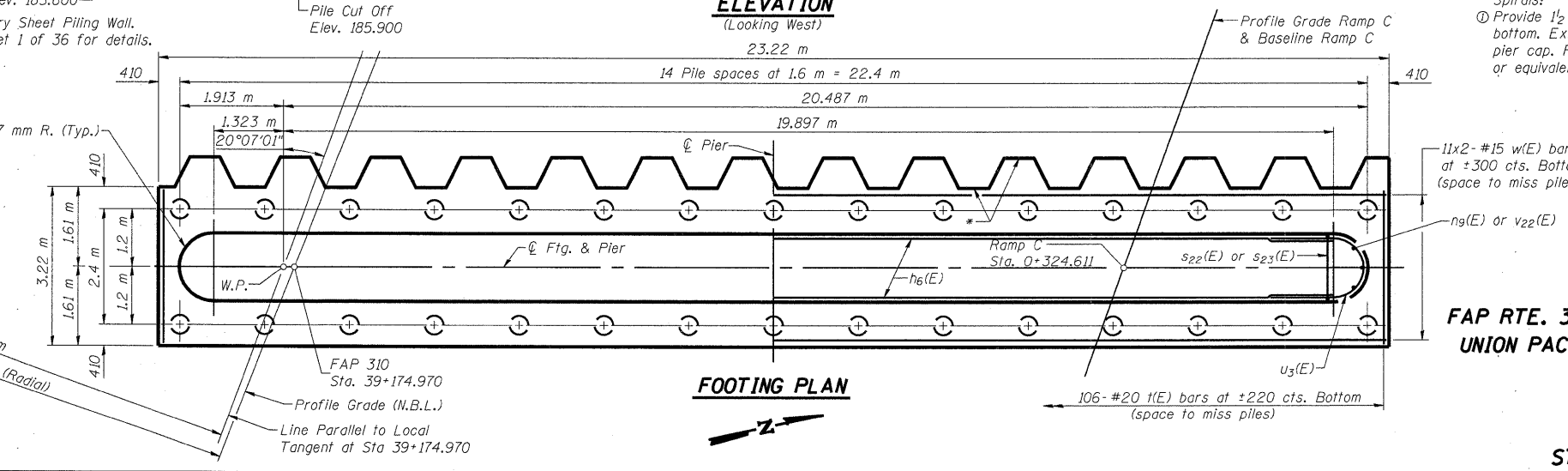
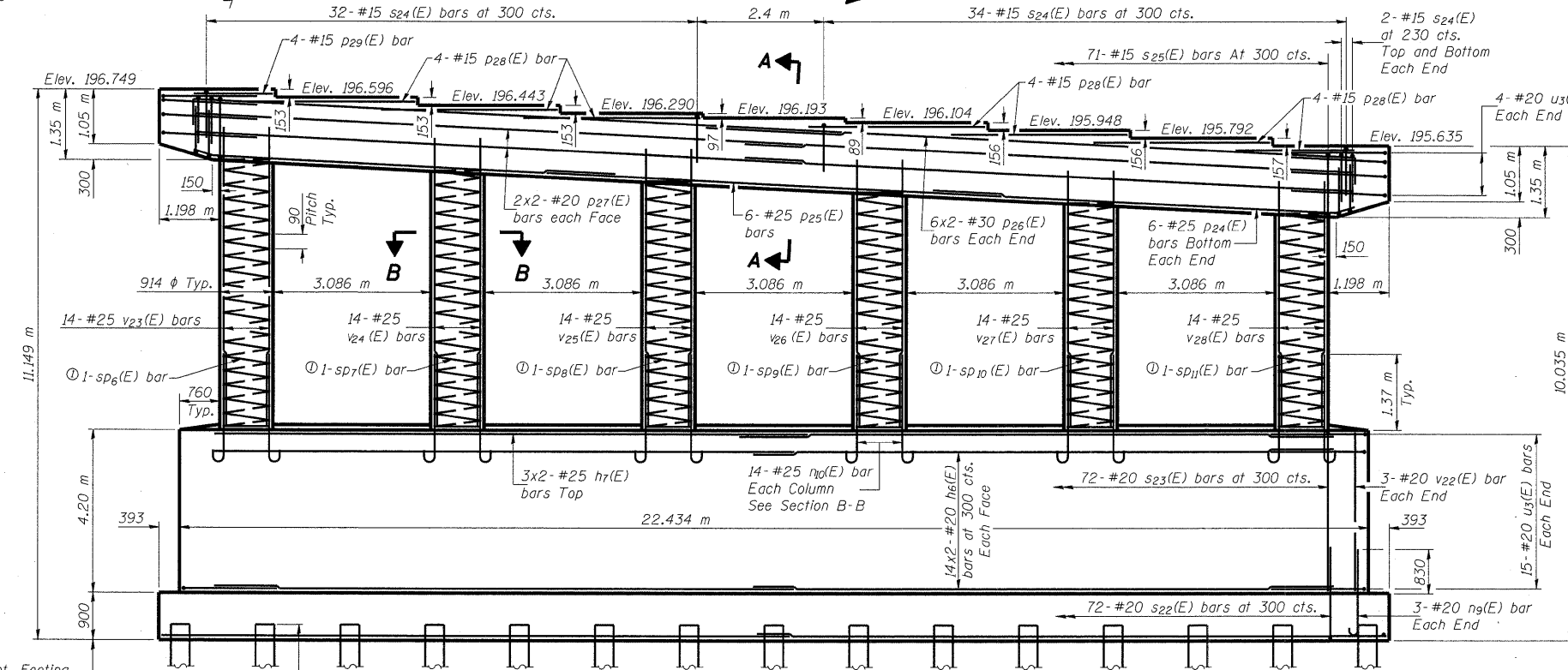
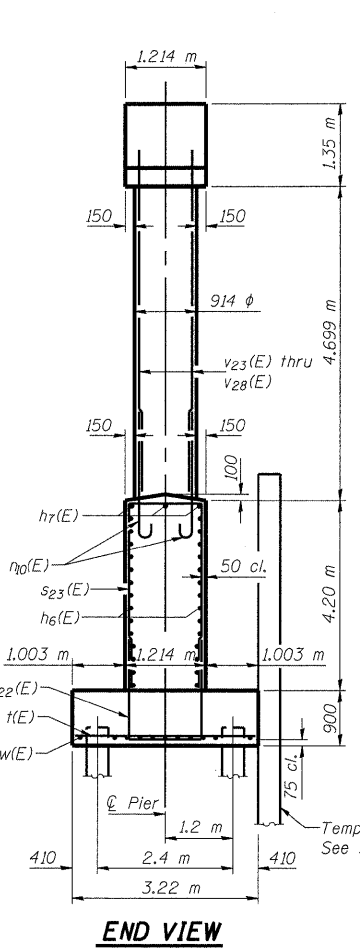
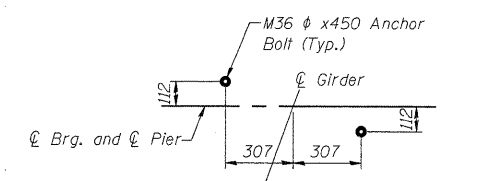
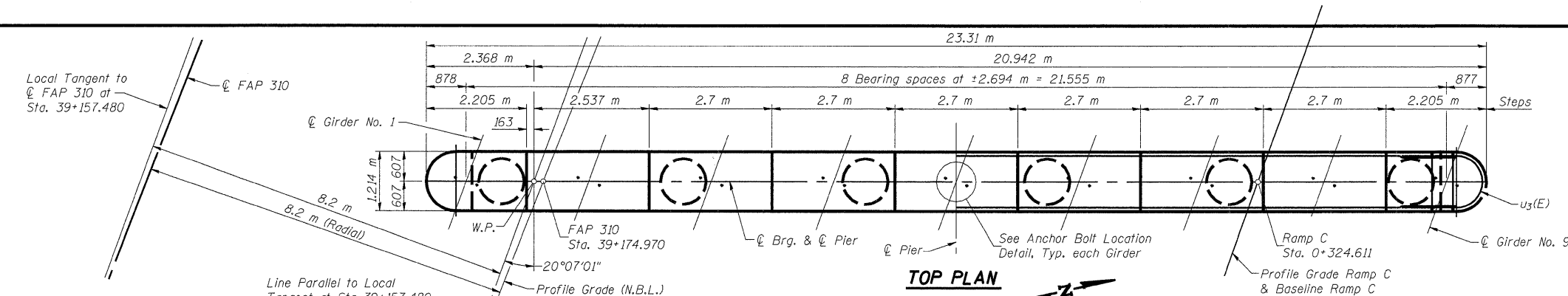


ROUTE NO.	SECTION	COUNTY	SHEETS	SHEET NO.
F.A.P. 310	*	MADISON	149	61
SHEET NO. 30				
36 SHEETS				
Contract #76634 * 60-15VB-1 & 2				



Notes:

Work this sheet with sheet #31 of 36.

Space reinforcement in cap to miss anchor bolts.

Pour steps monolithically with cap.

All edges shall have standard 20 mm chamfer except as noted.

Minimum Spiral lap = 800 mm.

Spiral Laps not included in Bill of Materials.

Cost of Spiral Laps and #15 spacers shall be included in cost of "Reinforcement Bars, Epoxy Coated".

See sheet #31 of 36 for bar details.

See sheet #31 of 36 for Sections A-A.

See sheet #31 of 36 for Sections B-B.

Pier protection crash wall design complies with the requirements of AREMA Chapter 8, Part 2, Section 2.1.5.1.

PILE DATA

Type & Size: Metal Shell - 356 mm φ x 6.35 mm walls

Nominal Required Bearing: 1500 kN

Allowable Resistance Available: 500 kN

Est. Length: 13.0 m

No. Required: 29 + 1 Test Pile

Spirals:

Provide 1/2 extra turns top and bottom. Extend spiral 50 mm into pier cap. Provide 4-#15 spacers or equivalent.

*1/2" P.J.F. between Temporary Sheet Piling and footings. After Temporary Sheet Piling is removed dispose of 1/2" P.J.F. Cost included with Concrete Structures.

PIER #2
FAP RTE. 310 (IL RTE. 255) NB & RAMP C OVER
UNION PACIFIC & KANSAS CITY SOUTHERN R.R.
SECTION 60-15VB-1 & 2
MADISON COUNTY
STATION 39+160.297
STRUCTURE NUMBER 060-0310

p:\001.Les.\0200022\off\Railroad-Bridge\SN060-0310\PierNo2.dgn
 DESIGNED ADL
 CHECKED WLW
 DRAWN RLW/ADL
 CHECKED WLW