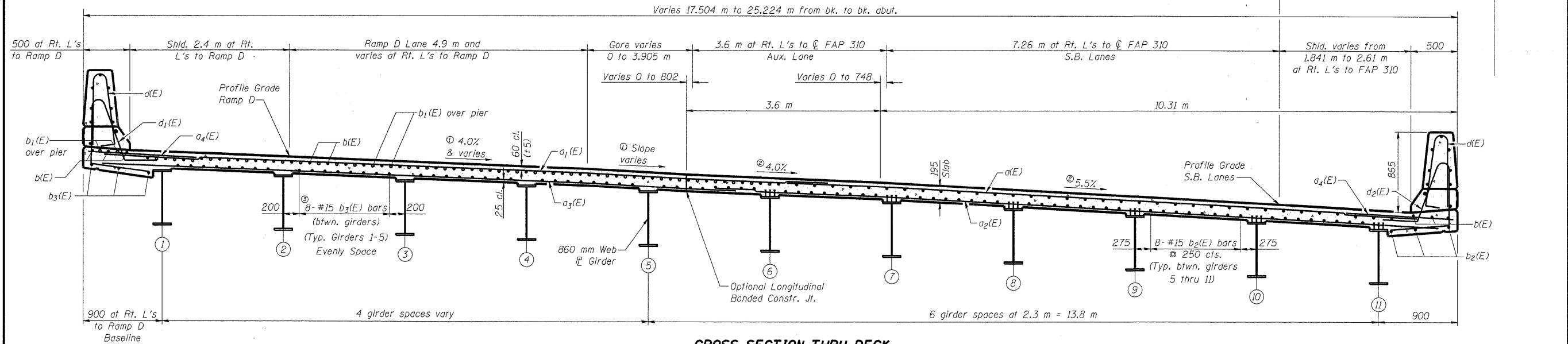


5/7/2009 10:57:49 AM

p:\001\ees\000024\offRailroad-Bridge\SN060-0311\Plans\060-0311\superstructures.dgn

ROUTE NO.	SECTION	COUNTY	SHEET NO.	SHEET NO.
310	*	MADISON	149	82
SHEET NO. 15				
45 SHEETS				

Contract #76634  
 \*60-15VB-1 & 2  
 8.2 m (Radial)  
 to FAP 310



**CROSS SECTION THRU DECK**

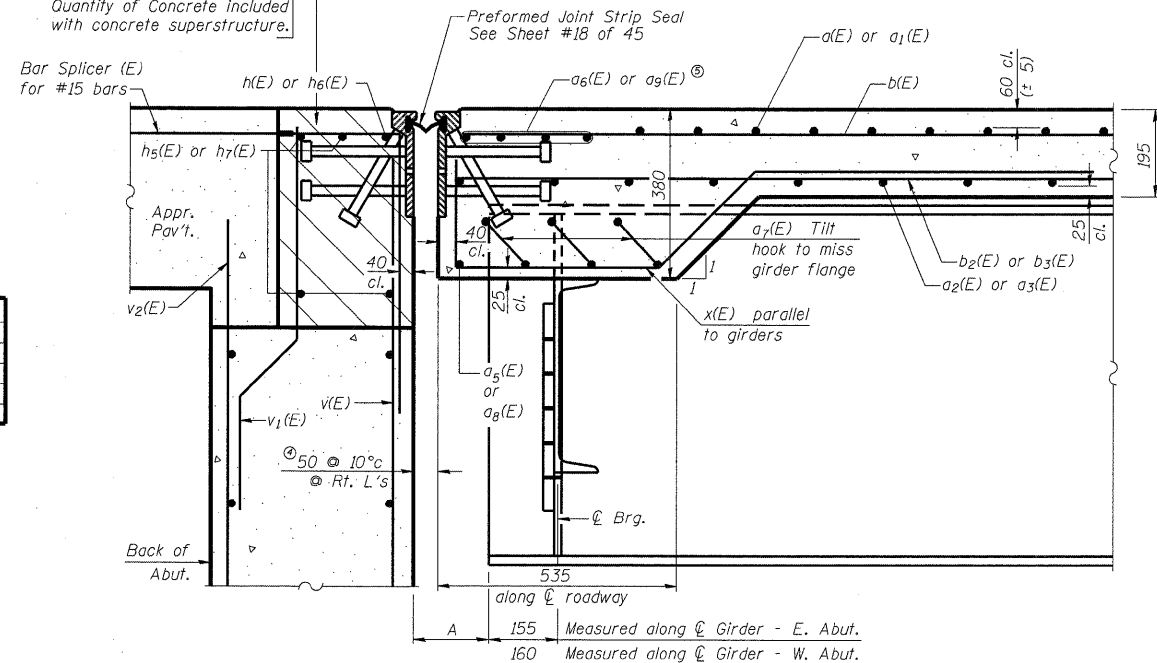
(Looking West)  
 (All dimensions are at Rt. L's to Local Tangent at Sta. 39+157.48, unless noted)

NEAR PIER

NEAR MIDSPAN

- Ⓛ at Rt. L's to Ramp D Baseline
- Ⓜ at Rt. L's to local tangent at Sta 39+157.48
- Ⓝ Number of Bars varies from 2 to 8

Hatched area to be poured after superstructure forms have been removed. Quantity of concrete included with concrete superstructure.



**SECTION A-A**

At East and West Abutments

**"A" DIMENSION**

	E. Abut.	W. Abut.
Girder 1	181	176
Girder 2	177	
Girder 3	172	167
Girder 4	168	
Girders 5-11	164	159

DESIGNED	ADL
CHECKED	WLW
DRAWN	KTH
CHECKED	WLW

- Notes:
- Ⓜ<sub>5</sub>(E), Ⓜ<sub>6</sub>(E) and Ⓜ<sub>7</sub>(E) bars placed along skew. See sheet #14 of 45 for  $b_3(E)$  layout.
  - Ⓝ Dimensions are based on a Rolled Rail Strip Seal Joint. If the Contractor elects to use the Welded Rail Strip Seal Joint, deck dimensions may require adjustments to satisfy the details on Sheet #18 of 45.
  - Ⓝ  $a_6(E)$  bars at 100 mm spacing. Place under longitudinal bars.

**SUPERSTRUCTURE DETAILS**  
 FAP RTE. 310 (IL RTE. 255) SB & RAMP D OVER  
 UNION PACIFIC & KANSAS CITY SOUTHERN R.R.  
 SECTION 60-15VB-1 & 2  
 MADISON COUNTY  
 STATION 39+160.297  
 STRUCTURE NUMBER 060-0311

Klingner & Assoc., P.C.