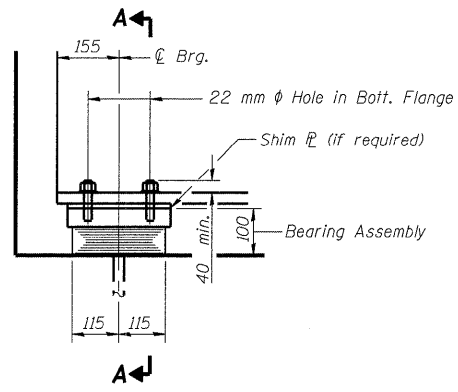


5/7/2009 10:51:53 AM

p:\001\les\00024\road-bridge\SN060-0311\Bearing.dgn

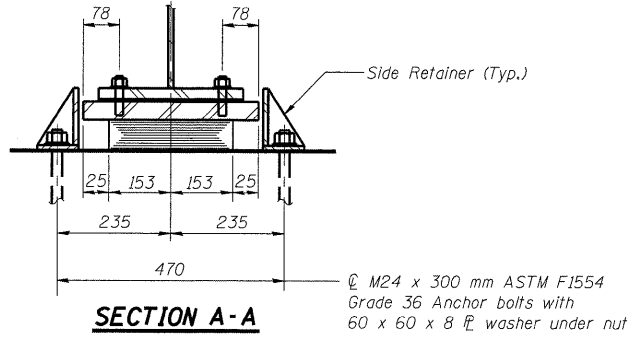
| | | | | | |
|-----------------------|----------|-------------------|--------|-------|--------------|
| ROUTE NO. | SECTION | COUNTY | SHEETS | SHEET | SHEET NO. 26 |
| 310 | * | MADISON | 149 | 93 | 45 SHEETS |
| FED. ROAD DIST. NO. 7 | ILLINOIS | FED. AID PROJECT- | | | |

Contract #76634
* 60-15VB-1 & 2

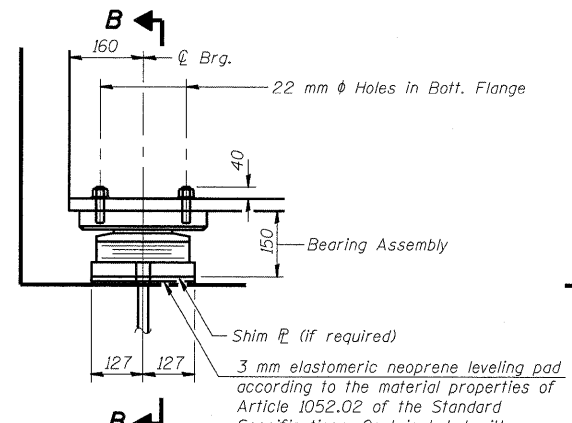


ELEVATION

TYPE I ELASTOMERIC EXP. BRG. - EAST ABUT.

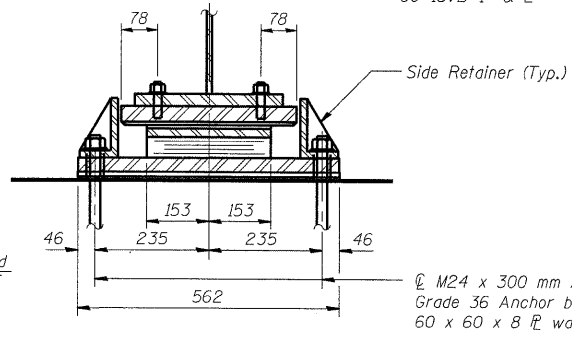


SECTION A-A



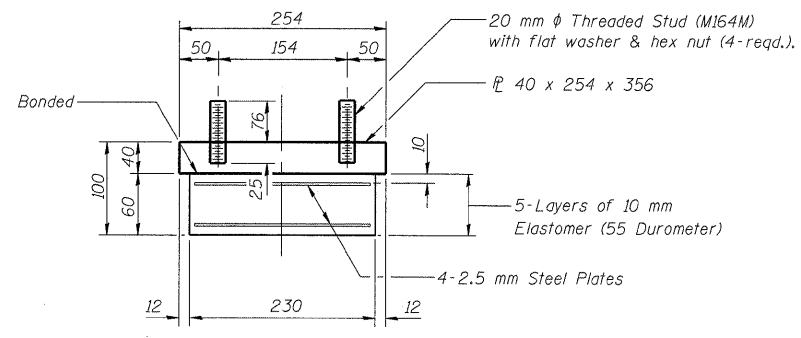
ELEVATION

TYPE II ELASTOMERIC EXP. BRG. - WEST ABUT.



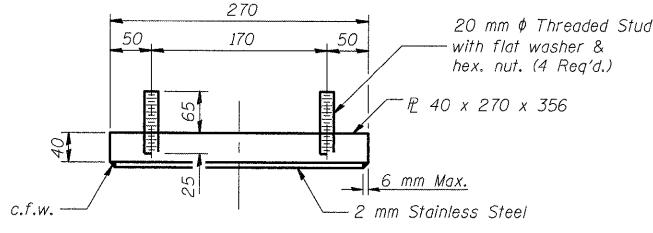
SECTION B-B

Notes:
See sheet #27 of 45 for Bill of Material
See sheet #27 of 45 for more notes.



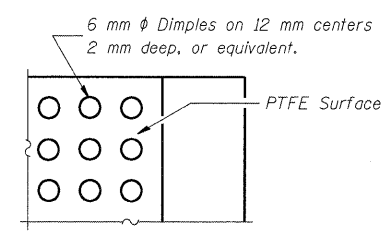
BEARING ASSEMBLY - EAST ABUT.

(11-Req'd)
Note: Shim plates shall not be placed under Bearing Assembly.

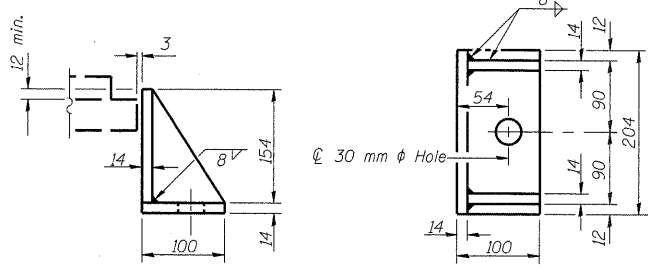


TOP BEARING ASSEMBLY - WEST ABUT.

(9-Req'd)

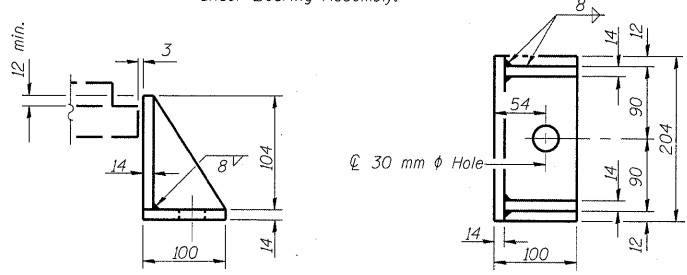


PLAN-PTFE SURFACE



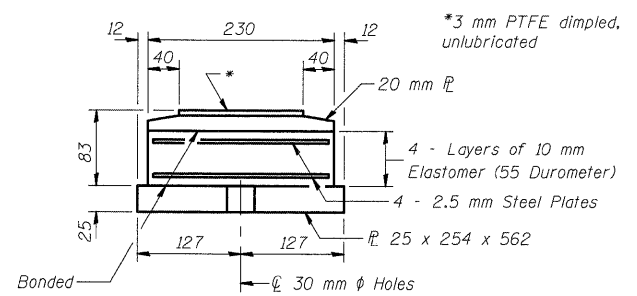
SIDE RETAINER - WEST ABUT.

Equivalent rolled angle with stiffeners will be allowed in lieu of welded plates. (18-Req'd)



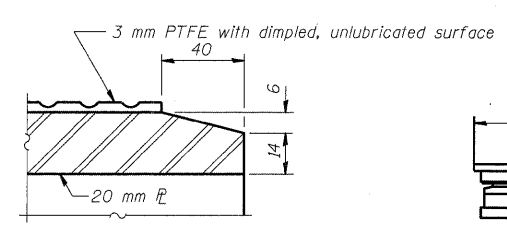
SIDE RETAINER - EAST ABUT.

Equivalent rolled angle with stiffeners will be allowed in lieu of welded plates. (22-Req'd)

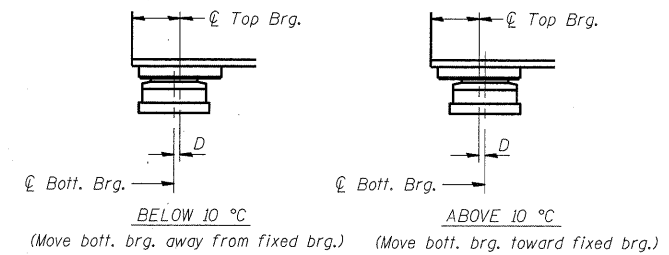


BOTTOM BEARING ASSEMBLY - WEST ABUT.

(9-Req'd)

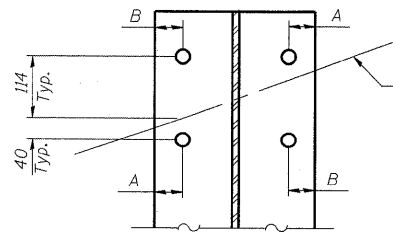


SECTION THRU PTFE



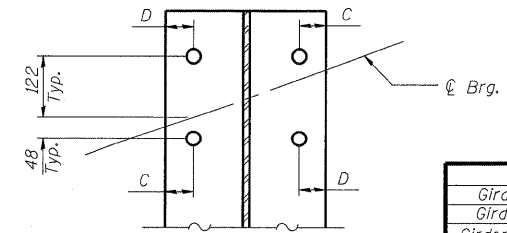
SETTING ANCHOR BOLTS AT EXP. BRG.

D = 1 mm per each 10 m of expansion for every 8 °C temp. change from the normal temp. of 10 °C.



BOTTOM FLANGE HOLE DETAIL - E. ABUT.

| | A | B |
|--------------|----|----|
| Girder 1 | 60 | 42 |
| Girder 2 | 58 | 44 |
| Girder 3 | 55 | 46 |
| Girder 4 | 52 | 48 |
| Girders 5-11 | 50 | 50 |



BOTTOM FLANGE HOLE DETAIL - W. ABUT.

| | C | D |
|--------------|----|----|
| Girder 1 | 61 | 41 |
| Girder 3 | 55 | 44 |
| Girders 5-11 | 50 | 50 |

| | |
|----------|-----|
| DESIGNED | ADL |
| CHECKED | WLW |
| DRAWN | RJP |
| CHECKED | WLW |

(Sheet 1 of 2)
BEARING DETAILS
FAP RTE. 310 (IL RTE. 255) SB & RAMP D OVER
UNION PACIFIC & KANSAS CITY SOUTHERN R.R.
SECTION 60-15VB-1 & 2
MADISON COUNTY
STATION 39+160.297
STRUCTURE NUMBER 060-0311