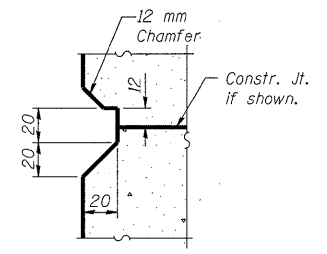


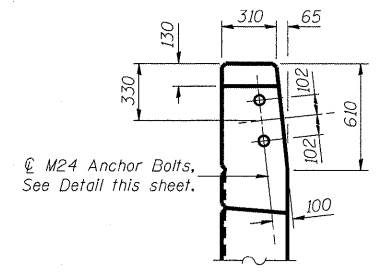
10:53:25 AM  
 p:\00Files\00002\A\Railroad\Road\Bridges\SN060-0311\Plans\060-0311\Est\Abutment.dgn

ROUTE NO.	SECTION	COUNTY	SHEETS	SHEET	SHEET NO. 30
310	*	MADISON	149	97	45 SHEETS
FED. ROAD DIST. NO. 7		ILLINOIS		FED. AID PROJECT	

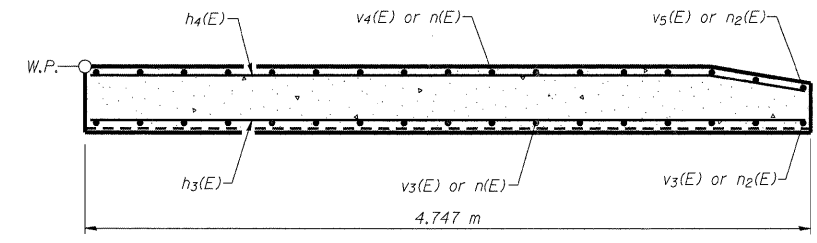
Contract #76634  
 \* 60-15VB-1 & 2



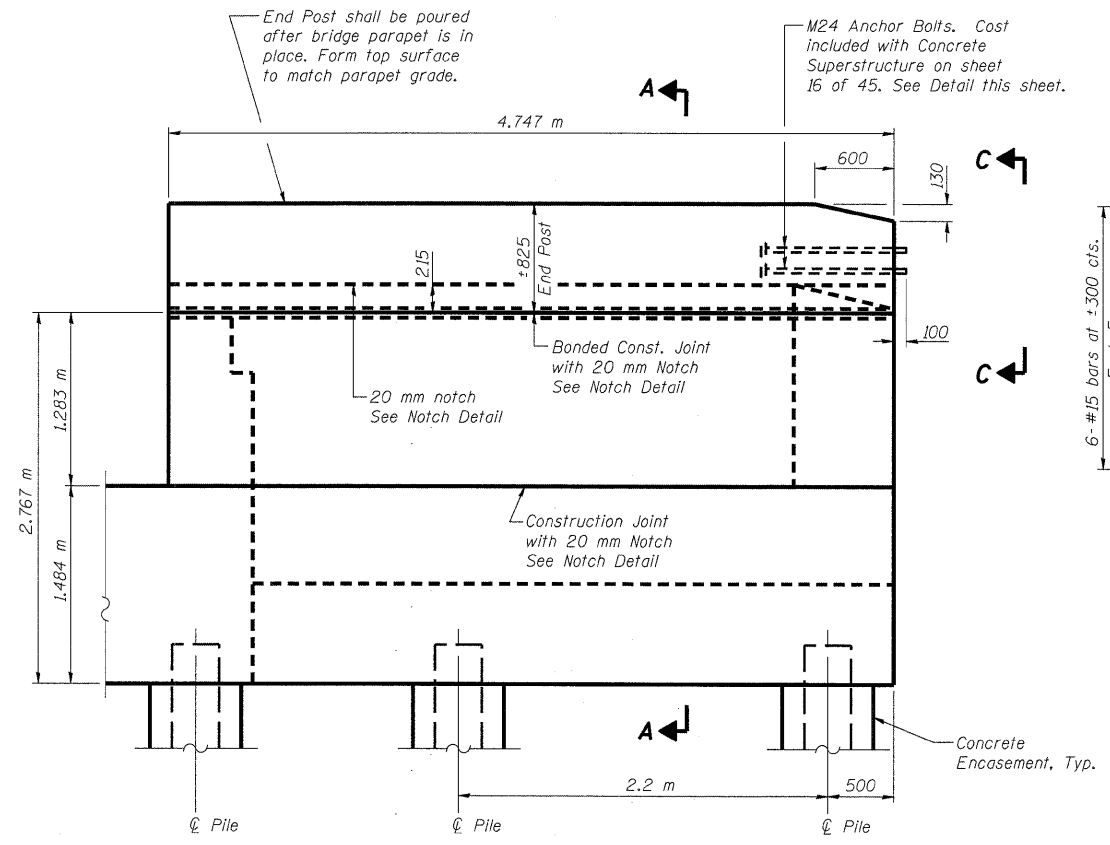
**NOTCH DETAIL**



**VIEW C-C**

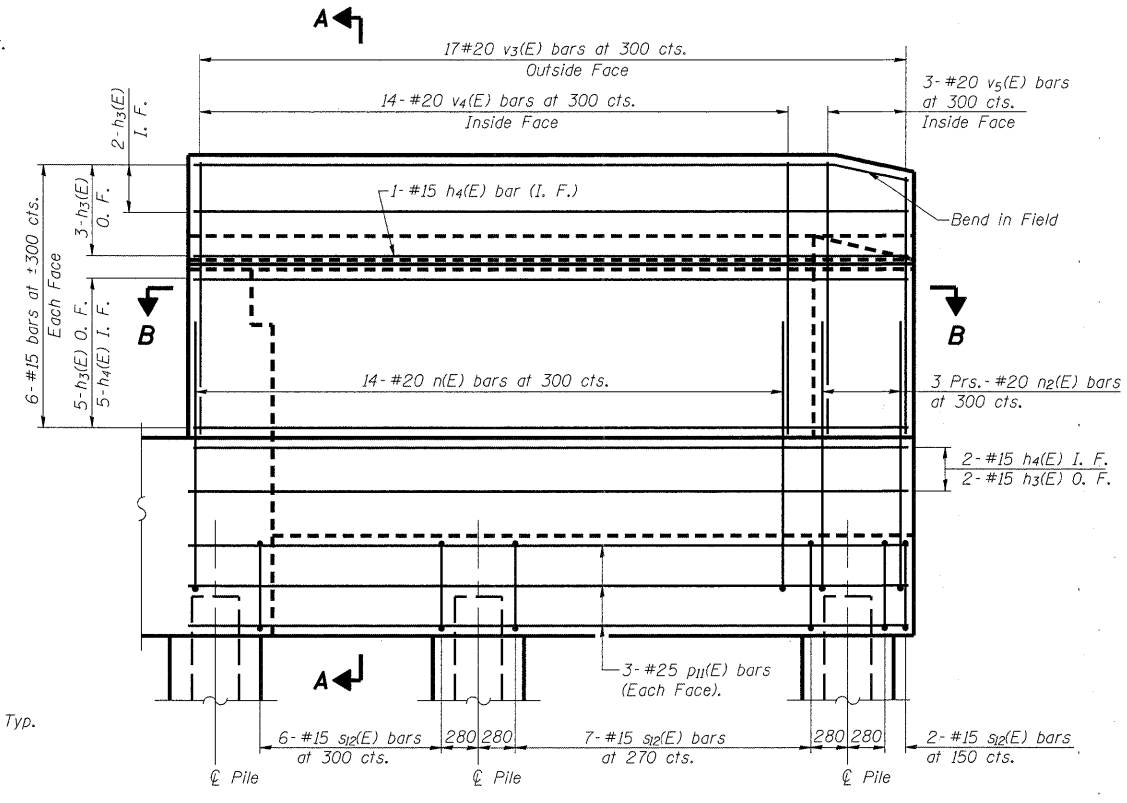


**SEC. B-B**



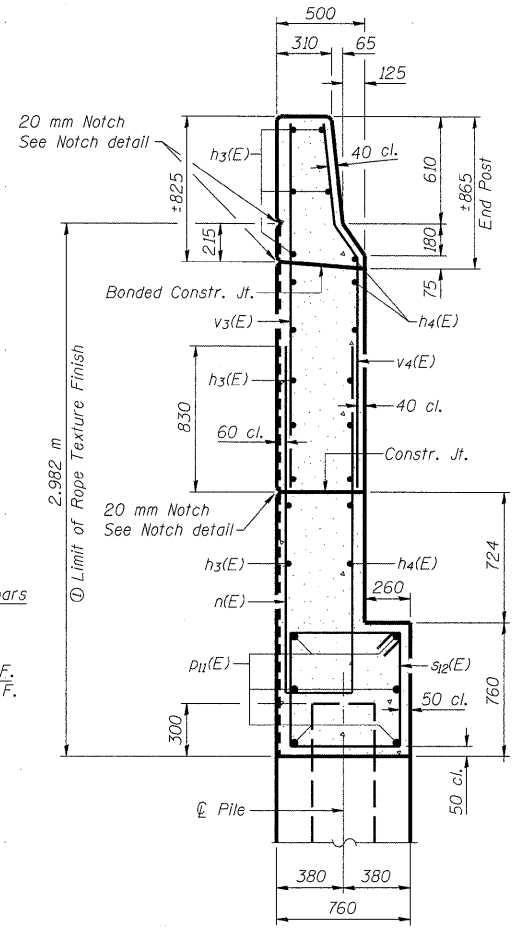
**SOUTH WING WALL ELEVATION**

(Looking North)  
Showing Dimensions



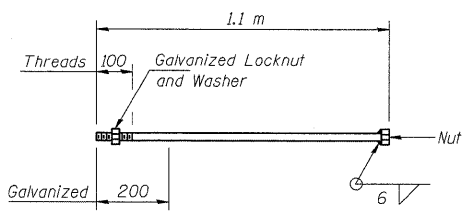
**SOUTH WING WALL ELEVATION**

(Looking North)  
Showing Reinforcement



**SEC. A-A**

(P) Patterned Rope Texture Concrete  
 (See Sheet #4 of 45 for details)



**M24 ANCHOR BOLT**

Notes:  
 Work this sheet with sheets #28, 29 & 31 of 45.  
 Quantity of concrete in end post included with Concrete Superstructure on sheet #16 of 45.

DESIGNED	ADL
CHECKED	WLW
DRAWN	RJP
CHECKED	WLW

**EAST ABUTMENT DETAILS**  
**FAP RTE. 310 (IL RTE. 255) SB & RAMP D OVER**  
**UNION PACIFIC & KANSAS CITY SOUTHERN R.R.**  
**SECTION 60-15VB-1 & 2**  
**MADISON COUNTY**  
**STATION 39+160.297**  
**STRUCTURE NUMBER 060-0311**