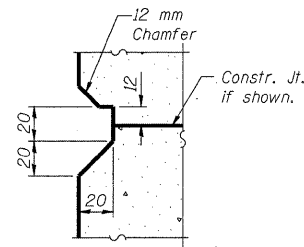


11:01:07 AM

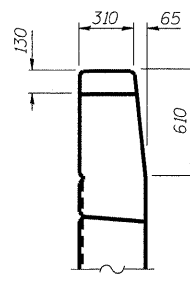
p:\00f\ies\000024\uf\ra\road-br\dge\SN060-0311\WestAbutment.dgn

ROUTE NO.	SECTION	COUNTY	SHEET	SHEET	SHEET NO. 35
P.A.P. 310	*	MADISON	149	102	45 SHEETS
FED. ROAD DIST. NO. 7	ILLINOIS	FED. AID PROJECT			

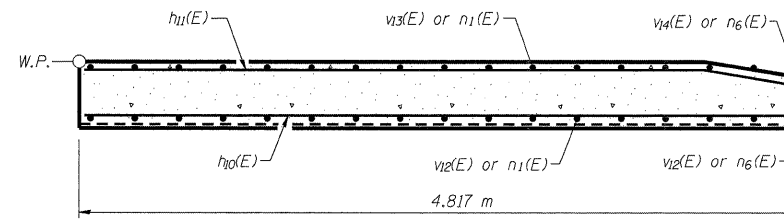
Contract #76634
* 60-15VB-1 & 2



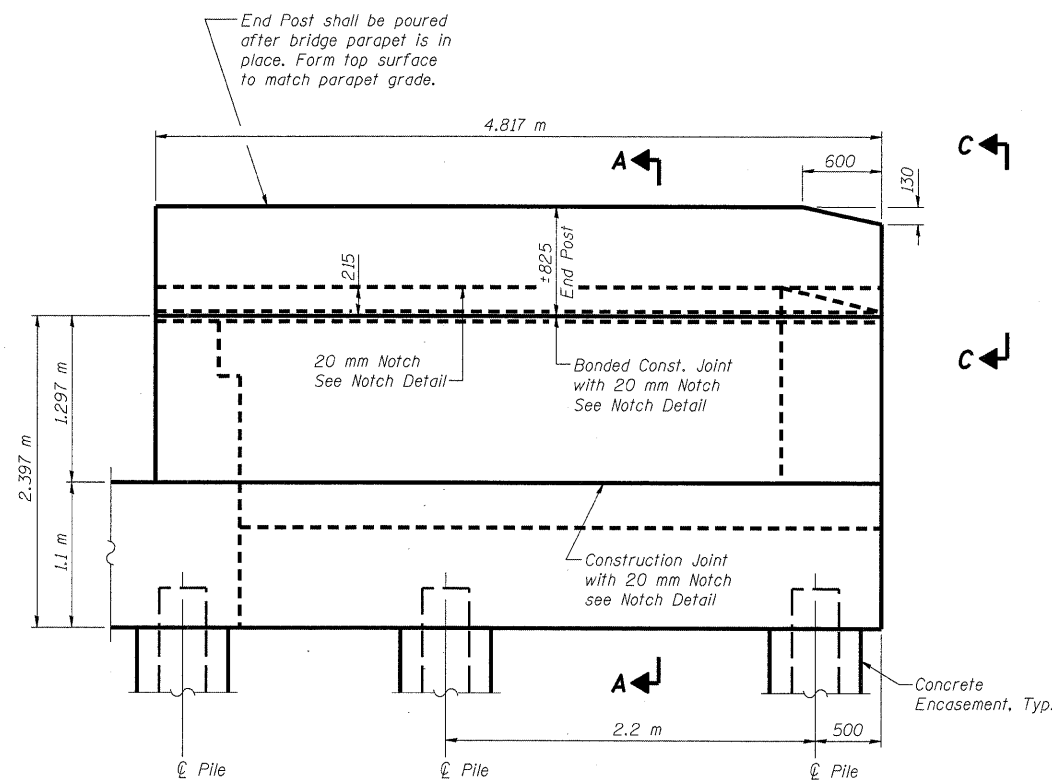
NOTCH DETAIL



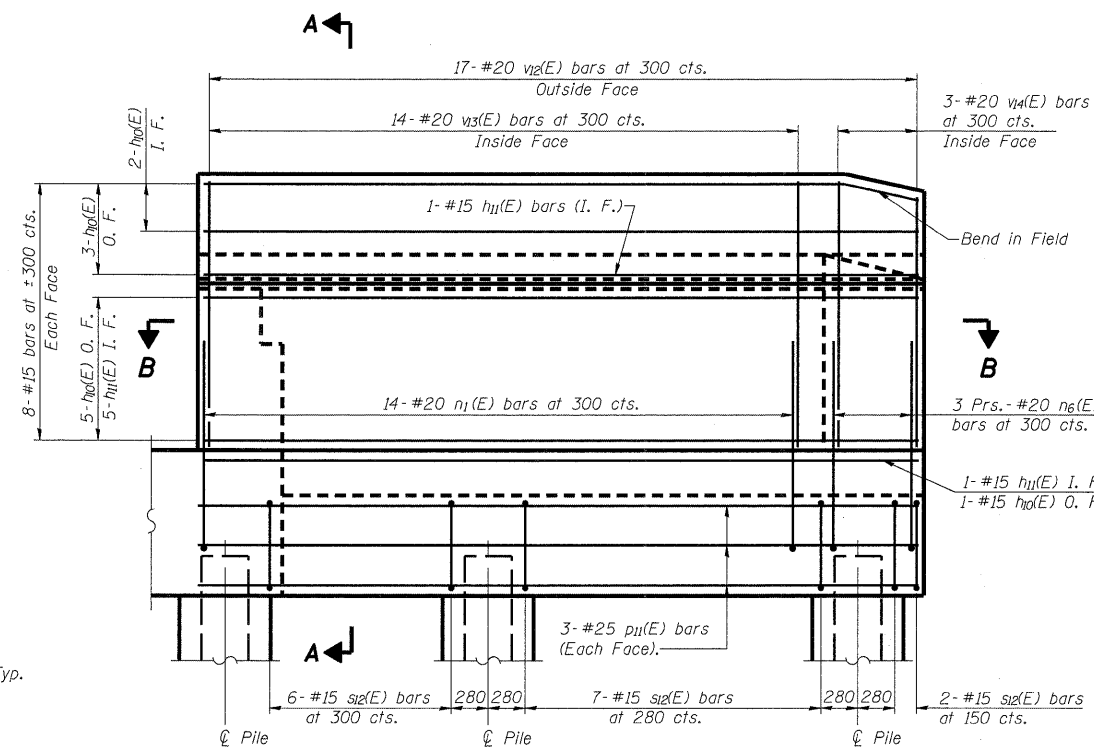
VIEW C-C



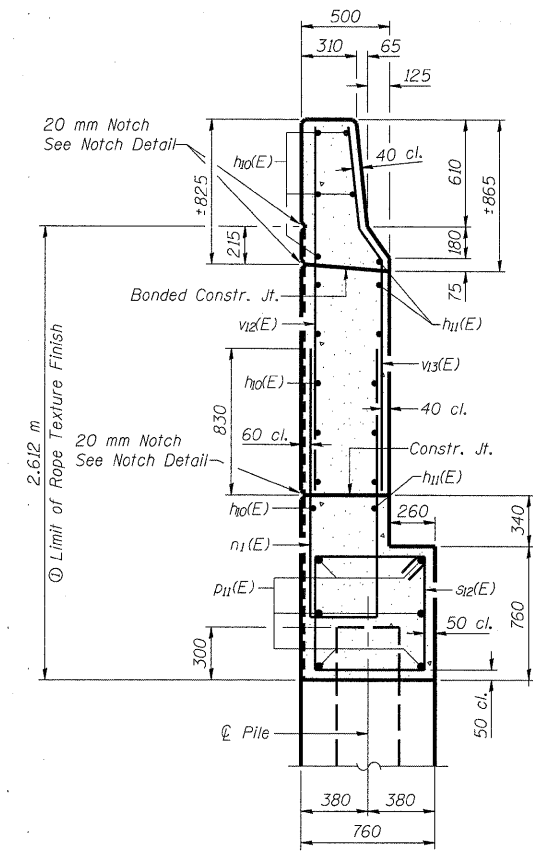
SEC. B-B



NORTH WING WALL ELEVATION
(Looking South)
Showing Dimensions



NORTH WING WALL ELEVATION
(Looking South)
Showing Reinforcement



SEC. A-A

⊙ Patterned Rope Texture Concrete
(See Sheet #4 of 45 for details)

Note:
Work this sheet with sheets #32, 33 & 34 of 45.
Quantity of concrete in end post included with Concrete Superstructure on sheet #16 of 45.

WEST ABUTMENT DETAILS
FAP RTE. 310 (IL RTE. 255) SB & RAMP D OVER
UNION PACIFIC & KANSAS CITY SOUTHERN R.R.
SECTION 60-15VB-1 & 2
MADISON COUNTY
STATION 39+160.297
STRUCTURE NUMBER 060-0311

Klingner & Assoc., P.C.

DESIGNED	ADL
CHECKED	WLW
DRAWN	RJP
CHECKED	WLW