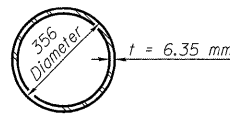


5/7/2009 10:54:13 AM

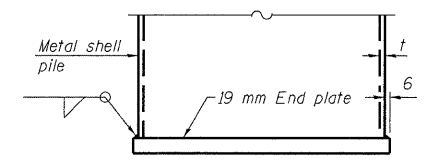
p:\00files\000024\Railroad\Bridges\SN060-0311\Plans\060-0311\misc.dgn

ROUTE NO.	SECTION	COUNTY	SHEETS	SHEET NO.	SHEET NO.
F.A.P. 310	*	MADISON	149	107	45 SHEETS
FED. ROAD DIST. NO. 7	ILLINOIS		EST. AND PROJECT		

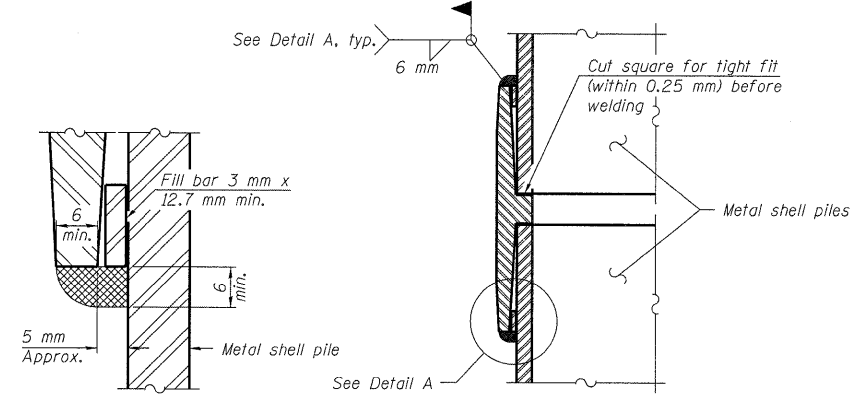
Contract #76634
* 60-15VB-1 & 2



METAL SHELL PILE



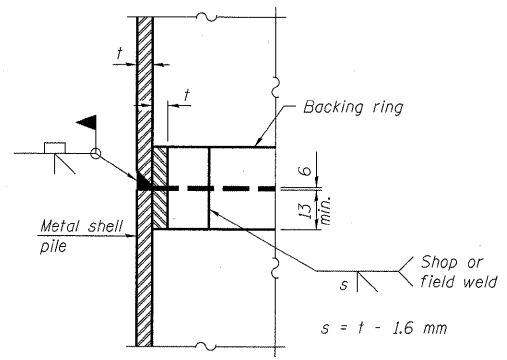
END PLATE ATTACHMENT



DETAIL A

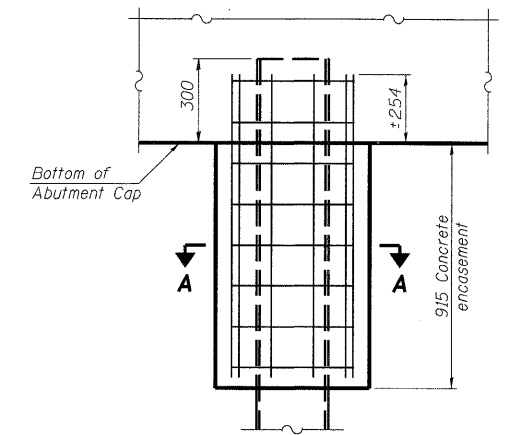
Notes:
The 3 x 12.7 mm min. fill bar may be constructed of 2 bars with a 3 mm max. gap between them.
Pile segments shall be driven to solid contact with splicer before welding.

WELDED COMMERCIAL SPLICE

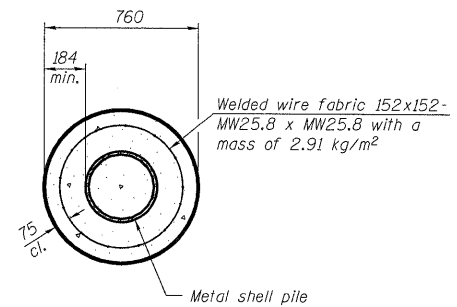


COMPLETE PENETRATION WELD SPLICE

Backing ring made from pile shell. Remove segment to allow reducing circumference and vertically rejoin with partial joint penetration weld.



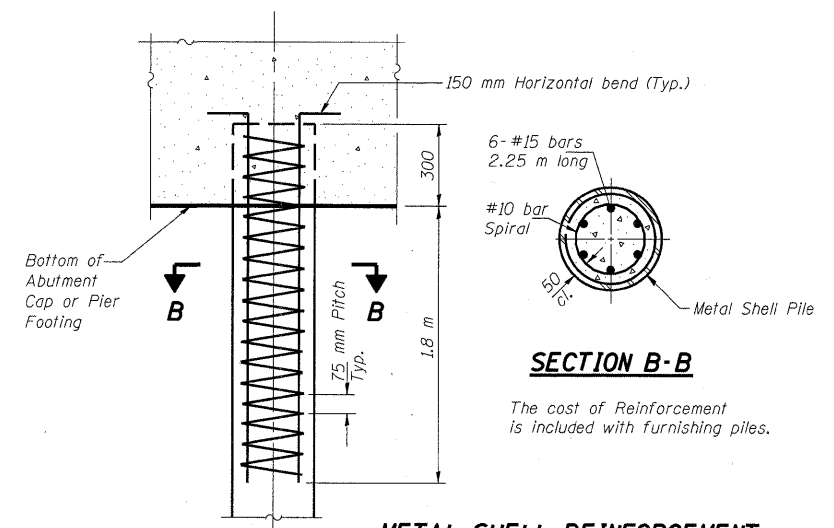
ELEVATION



SECTION A-A

Notes:
Forms for encasement may be omitted when soil conditions permit.

CONCRETE ENCASEMENT AT ABUTMENTS



SECTION B-B

The cost of Reinforcement is included with furnishing piles.

METAL SHELL REINFORCEMENT AT ABUTMENTS & PIERS

DESIGNED	ADL
CHECKED	WLW
DRAWN	ADL/DGM
CHECKED	WLW

Note:
The metal shell piles shall be according to ASTM A 252 Grade 3.

PILE DETAILS
FAP RTE. 310 (IL RTE. 255) SB & RAMP D OVER
UNION PACIFIC & KANSAS CITY SOUTHERN R.R.
SECTION 60-15VB-1 & 2
MADISON COUNTY
STATION 39+160.297
STRUCTURE NUMBER 060-0311