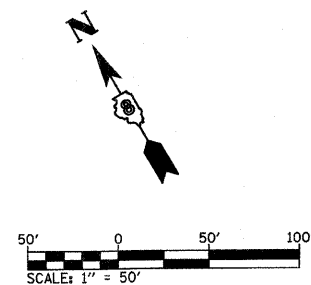


FILE NO.	SECTION	COUNTY	TOTAL SHEETS	SHEET NO.
70		MADISON	420	47
STA. 482+50		TO STA. 494+00		
CONTRACT NO.: 76709				
• 60-10K-1, 60-10HB				

PROP. CURVE 162PR1
 PI STA. = 493+92.86
 $\Delta = 28^\circ 58' 09''$ (LT)
 $D = 4^\circ 07' 29''$
 $R = 1,389.08'$
 $T = 358.84'$
 $L = 702.33'$
 $E = 45.60'$
 $e = NC$
 T.R. = N/A
 S.E. RUN = N/A
 P.C. STA. = 490+34.02
 P.T. STA. = 497+36.34

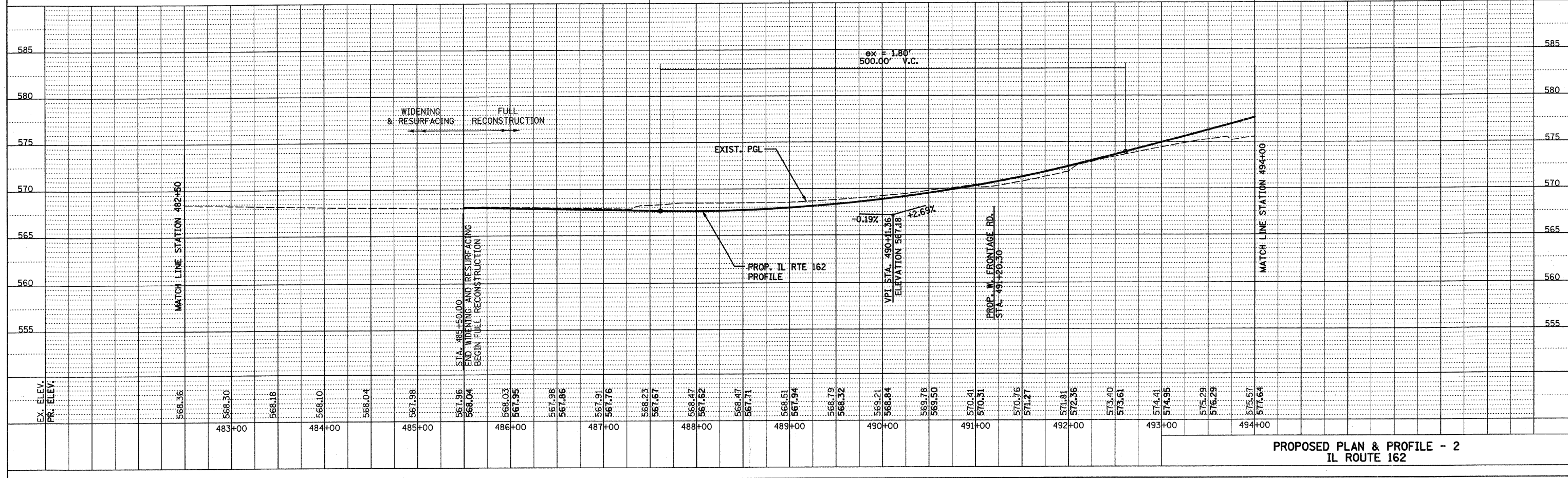
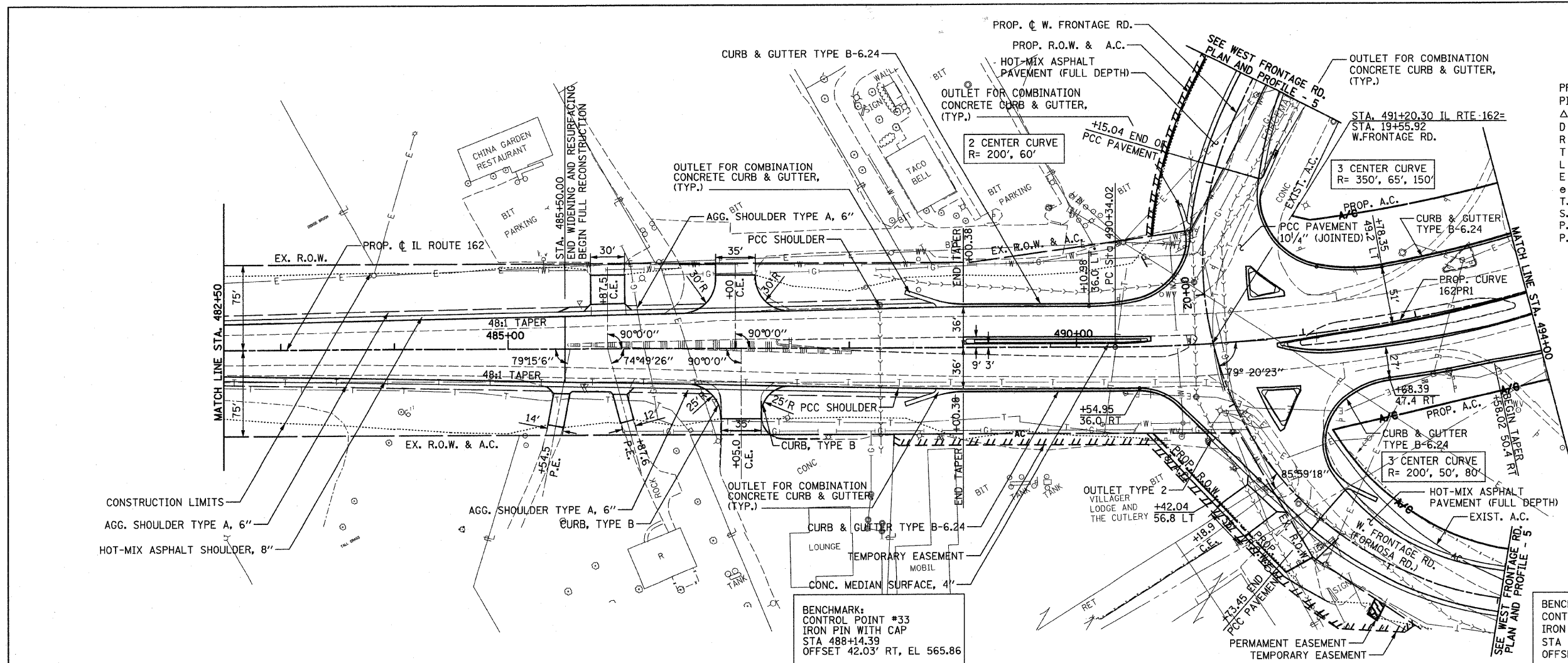


- NOTES:
- FOR MORE DETAILS SEE INTERSECTION LAYOUT DETAIL SHEETS.
 - ALL DIMENSIONS, STATIONS AND OFFSETS ARE TO THE EDGE OF PAVEMENT UNLESS OTHERWISE NOTED.

BENCHMARK:
 CONTROL POINT #34
 IRON PIN WITH CAP
 STA 493+09.47
 OFFSET 43.26' RT, EL 574.25

PLAN	DATE	BY
REVISIONS		
NO.		
DATE		
BY		
DESCRIPTION		
NO.		
DATE		
BY		
DESCRIPTION		

PROFILE	DATE	BY
REVISIONS		
NO.		
DATE		
BY		
DESCRIPTION		
NO.		
DATE		
BY		
DESCRIPTION		



PROPOSED PLAN & PROFILE - 2
 IL ROUTE 162

PLOT DATE: *DATE-TIME*

DGN-SPEC
 *REF: 236c01.dgn
 *REF: 236c01.dgn
 *REF: 236c01.dgn
 *REF: 236c01.dgn
 *REF: 236c01.dgn