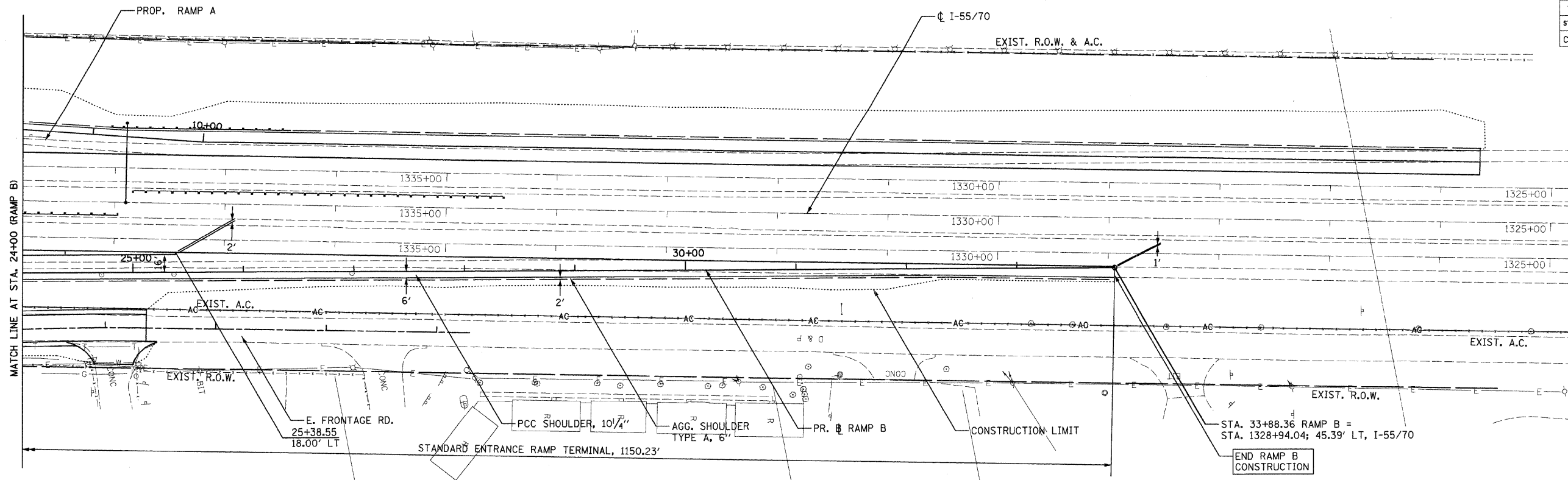
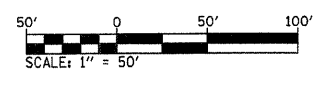
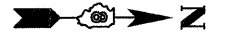


FAL ROUTE	SECTION	COUNTY	TOTAL SHEETS	SHEET NO
70	*	MADISON	420	57
STA. 24+00		TO STA. 33+88.36		
CONTRACT NO.: 76709				
• 60-10K-1, 60-10HB				

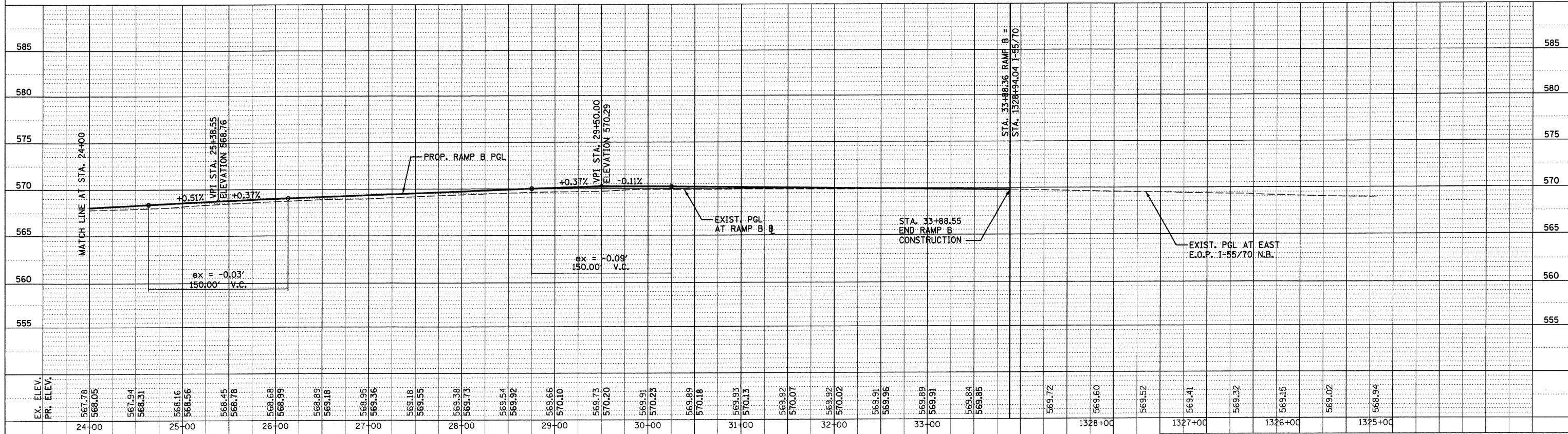


- NOTES:**
- FOR MORE DETAILS ON ENTRANCE RAMP TERMINAL SEE STD. 420201.
  - ALL DIMENSIONS, STATIONS AND OFFSETS ARE TO THE EDGE OF PAVEMENT UNLESS OTHERWISE NOTED.



PLAN	SURVEYED	DATE
NO.	BY	
	BY	
	BY	
	BY	
	BY	

PROFILE	SURVEYED	DATE
NO.	BY	
	BY	
	BY	
	BY	
	BY	



**PROPOSED PLAN & PROFILE - 12 RAMP B**

DATE-TIME: \*  
 \*DGN-SPEC\*  
 REF- 236cnp01.dgn  
 REF- 236cnp01.dgn  
 REF- 236cnp01.dgn  
 REF- 236cnp01.dgn  
 REF- 236cnp01.dgn