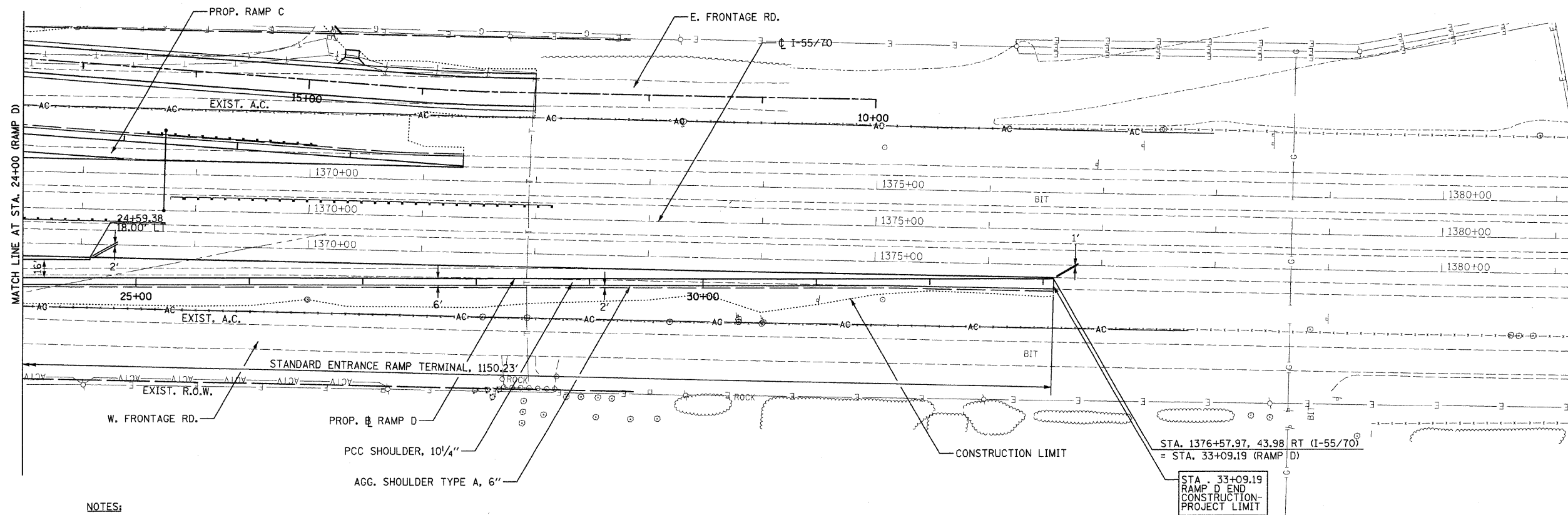
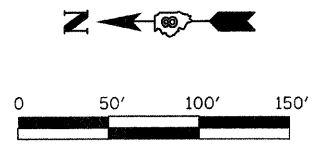


FILE NO.	SECTION	COUNTY	TOTAL SHEETS	SHEET NO.
70	*	MADISON	420	61
STA. 24+00		TO STA. 33+09.19		
CONTRACT NO.: 76709				
* 60-10K-1, 60-10HB				



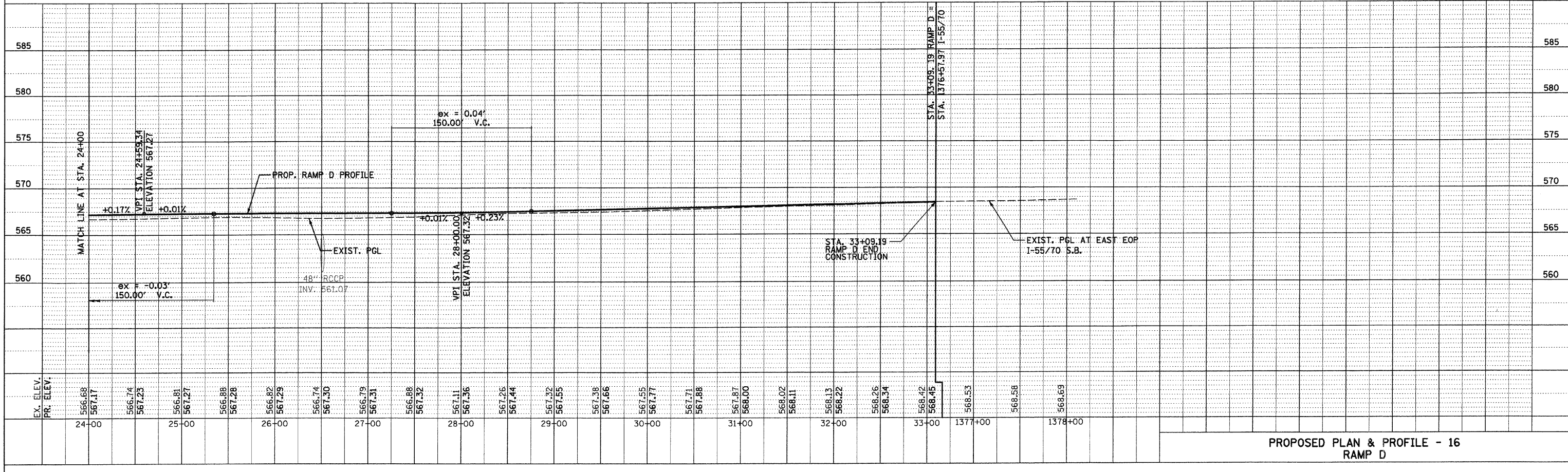
- NOTES:**
- FOR MORE DETAILS ON ENTRANCE RAMP TERMINAL SEE STD. 420201.
  - ALL DIMENSIONS, STATIONS AND OFFSETS ARE TO THE EDGE OF PAVEMENT UNLESS OTHERWISE NOTED.

STA. 1376+57.97, 43.98 RT (I-55/70)  
= STA. 33+09.19 (RAMP D)  
STA. 33+09.19  
RAMP D END  
CONSTRUCTION-  
PROJECT LIMIT



PLAN	SURVEYED	DATE
	PLOTTED	BY
	CHECKED	
	DATE	
	NO. OF WAY CHECKED	
	CADD FILE NAME	

PROFILE	SURVEYED	DATE
	PLOTTED	BY
	CHECKED	
	DATE	
	NO. OF WAY CHECKED	
	STRUCTURE NOTATIONS CHKD	



PROPOSED PLAN & PROFILE - 16  
RAMP D

\*DATE-TIME\*  
\*DGN-SPEC\*  
\*REF- 236cctd01.dgn  
\*REF- 236cctd02.dgn  
\*REF- 236cctd03.dgn  
\*REF- 236cctd04.dgn  
\*REF- 236cctd05.dgn  
\*REF- 236cctd06.dgn  
\*REF- 236cctd07.dgn  
\*REF- 236cctd08.dgn  
\*REF- 236cctd09.dgn  
\*REF- 236cctd10.dgn  
\*REF- 236cctd11.dgn  
\*REF- 236cctd12.dgn  
\*REF- 236cctd13.dgn  
\*REF- 236cctd14.dgn  
\*REF- 236cctd15.dgn  
\*REF- 236cctd16.dgn  
\*REF- 236cctd17.dgn  
\*REF- 236cctd18.dgn  
\*REF- 236cctd19.dgn  
\*REF- 236cctd20.dgn  
\*REF- 236cctd21.dgn  
\*REF- 236cctd22.dgn  
\*REF- 236cctd23.dgn  
\*REF- 236cctd24.dgn  
\*REF- 236cctd25.dgn  
\*REF- 236cctd26.dgn  
\*REF- 236cctd27.dgn  
\*REF- 236cctd28.dgn  
\*REF- 236cctd29.dgn  
\*REF- 236cctd30.dgn  
\*REF- 236cctd31.dgn  
\*REF- 236cctd32.dgn  
\*REF- 236cctd33.dgn  
\*REF- 236cctd34.dgn  
\*REF- 236cctd35.dgn  
\*REF- 236cctd36.dgn  
\*REF- 236cctd37.dgn  
\*REF- 236cctd38.dgn  
\*REF- 236cctd39.dgn  
\*REF- 236cctd40.dgn  
\*REF- 236cctd41.dgn  
\*REF- 236cctd42.dgn  
\*REF- 236cctd43.dgn  
\*REF- 236cctd44.dgn  
\*REF- 236cctd45.dgn  
\*REF- 236cctd46.dgn  
\*REF- 236cctd47.dgn  
\*REF- 236cctd48.dgn  
\*REF- 236cctd49.dgn  
\*REF- 236cctd50.dgn