

FAP ROUTE	SECTION	COUNTY	TOTAL SHEETS	SHEET NO.
70	•	MADISON	420	75
STA. TO STA.		CONTRACT NO.: 76709		
		60-10K-1,60-10HB		



LEGEND:

- EXISTING OR NEW PAVEMENT USED FOR MAINTENANCE OF TRAFFIC
- CONSTRUCTION LIMITS DURING STAGE
- DIRECTION OF TRAFFIC ARROW
- NEW PAVEMENT
- TEMPORARY PAVEMENT
- TEMPORARY TRAFFIC SIGN

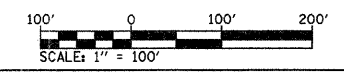
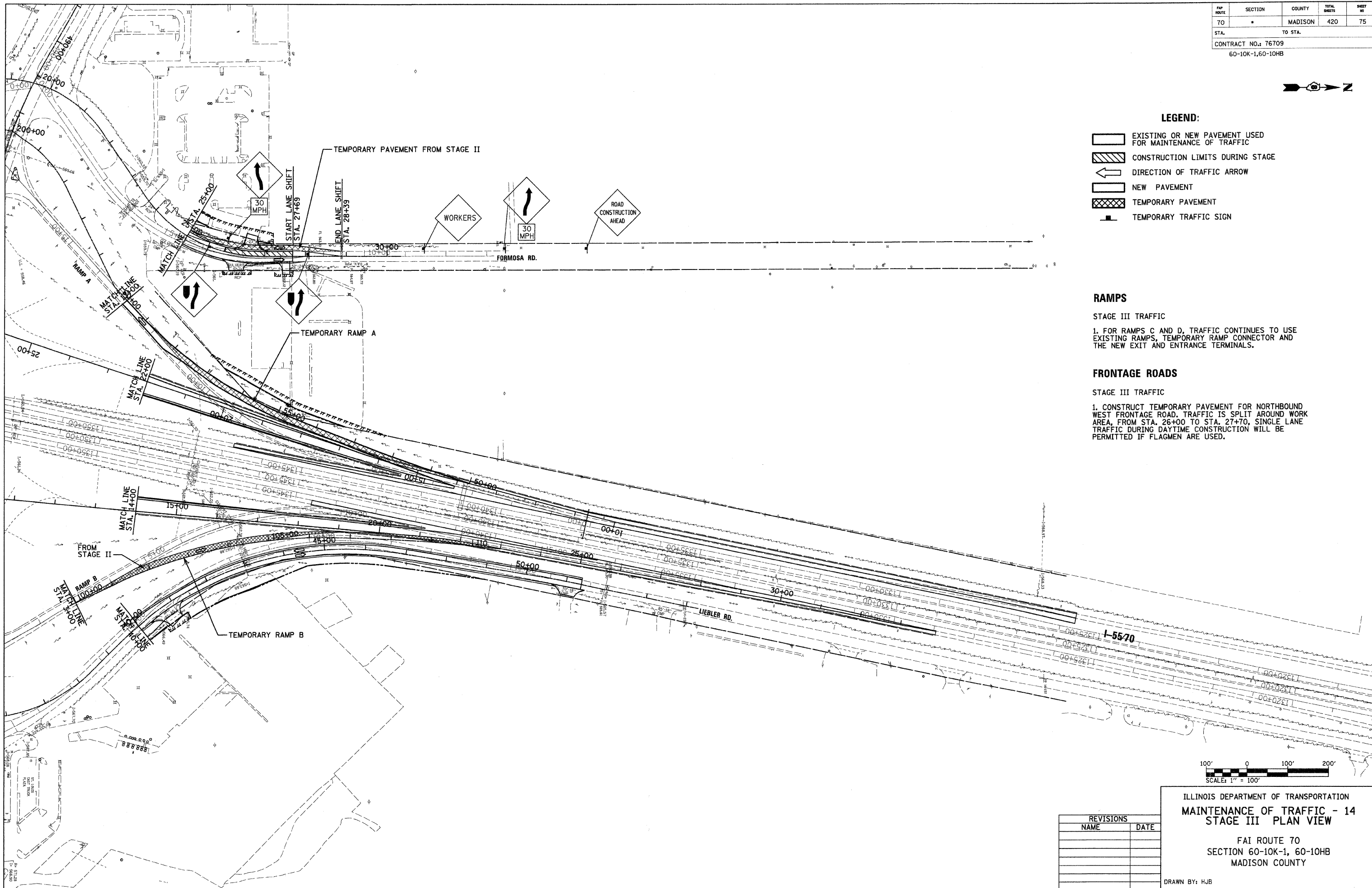
RAMPS

- STAGE III TRAFFIC
- FOR RAMPS C AND D, TRAFFIC CONTINUES TO USE EXISTING RAMPS, TEMPORARY RAMP CONNECTOR AND THE NEW EXIT AND ENTRANCE TERMINALS.

FRONTAGE ROADS

- STAGE III TRAFFIC
- CONSTRUCT TEMPORARY PAVEMENT FOR NORTHBOUND WEST FRONTAGE ROAD. TRAFFIC IS SPLIT AROUND WORK AREA, FROM STA. 26+00 TO STA. 27+70, SINGLE LANE TRAFFIC DURING DAYTIME CONSTRUCTION WILL BE PERMITTED IF FLAGMEN ARE USED.

PLAN	DATE
BY	
REVISIONS	
NO.	
DATE	
BY	
REVISIONS	
NO.	
DATE	



REVISIONS	
NAME	DATE

ILLINOIS DEPARTMENT OF TRANSPORTATION
MAINTENANCE OF TRAFFIC - 14
STAGE III PLAN VIEW

FAI ROUTE 70
SECTION 60-10K-1, 60-10HB
MADISON COUNTY

DRAWN BY: HJB

DATE-TIME*
PLOTTER-SPEC*
REF-REF