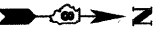
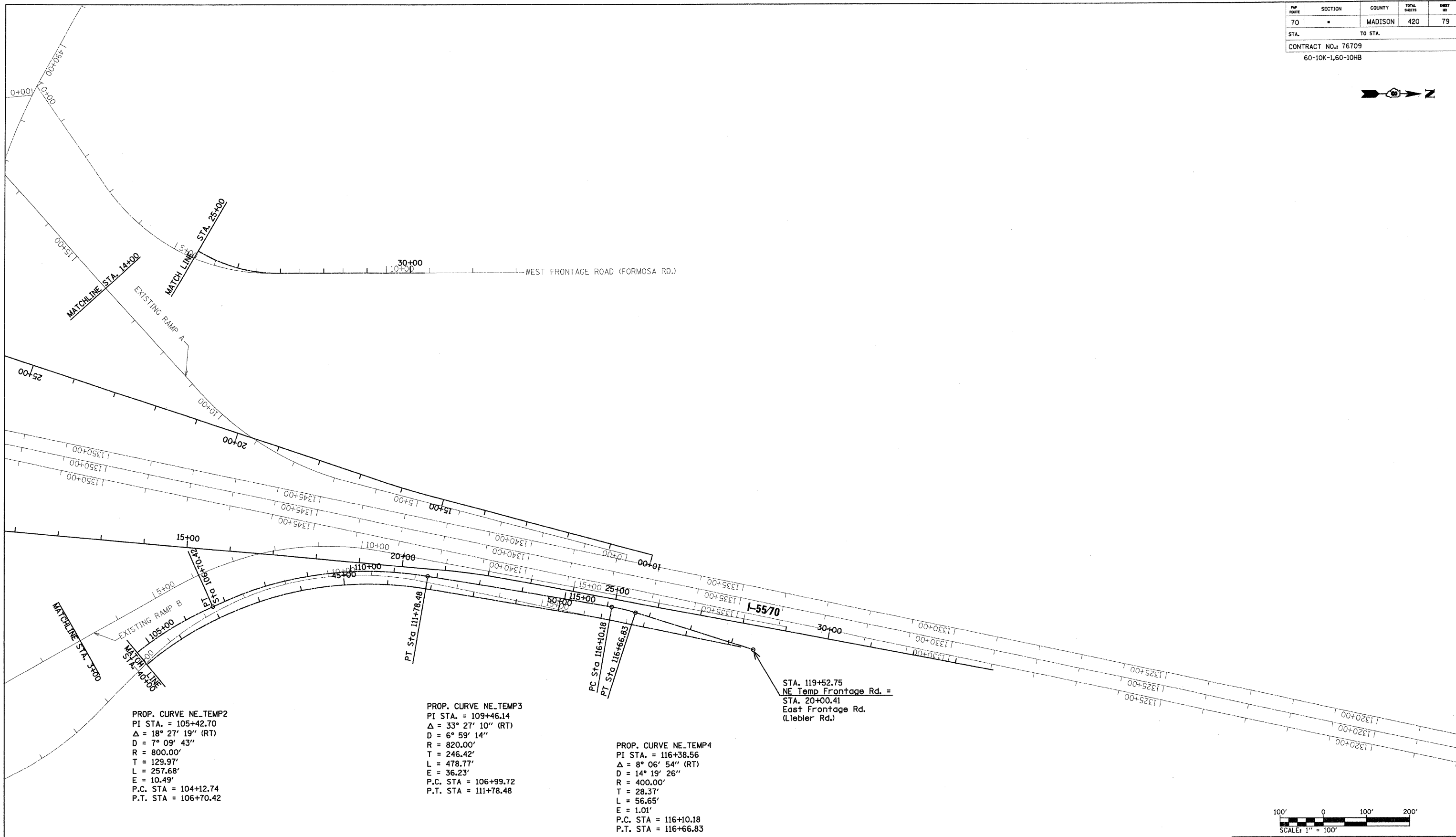


| | | | | |
|---------------------|---------|---------|--------------|----------|
| FAP ROUTE | SECTION | COUNTY | TOTAL SHEETS | SHEET NO |
| 70 | | MADISON | 420 | 79 |
| STA. | | TO STA. | | |
| CONTRACT NO.: 76709 | | | | |
| 60-10K-1,60-10HB | | | | |



| | | |
|---------------|-----------|------|
| PLAN | SURVEYED | DATE |
| NOTE BOOK NO. | PLOTTED | BY |
| | CHECKED | |
| | DATE | |
| | FILE NAME | |

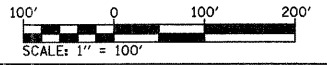


PROP. CURVE NE_TEMP2
 PI STA. = 105+42.70
 $\Delta = 18^\circ 27' 19''$ (RT)
 D = 7° 09' 43"
 R = 800.00'
 T = 129.97'
 L = 257.68'
 E = 10.49'
 P.C. STA = 104+12.74
 P.T. STA = 106+70.42

PROP. CURVE NE_TEMP3
 PI STA. = 109+46.14
 $\Delta = 33^\circ 27' 10''$ (RT)
 D = 6° 59' 14"
 R = 820.00'
 T = 246.42'
 L = 478.77'
 E = 36.23'
 P.C. STA = 106+99.72
 P.T. STA = 111+78.48

PROP. CURVE NE_TEMP4
 PI STA. = 116+38.56
 $\Delta = 8^\circ 06' 54''$ (RT)
 D = 14° 19' 26"
 R = 400.00'
 T = 28.37'
 L = 56.65'
 E = 1.01'
 P.C. STA = 116+10.18
 P.T. STA = 116+66.83

STA. 119+52.75
 NE Temp Frontage Rd. =
 STA. 20+00.41
 East Frontage Rd.
 (Lieber Rd.)



| REVISIONS | |
|-----------|------|
| NAME | DATE |
| | |
| | |
| | |
| | |
| | |

ILLINOIS DEPARTMENT OF TRANSPORTATION
**MAINTENANCE OF TRAFFIC
 STAGE I TEMPORARY ALIGNMENT**
 FAI ROUTE 70
 SECTION 60-10K-1, 60-10HB
 MADISON COUNTY

DRAWN BY: HJB

PLOT DATE: *DATE-TIME*

DATE-TIME
 DGN-SPEC
 REF
 REV