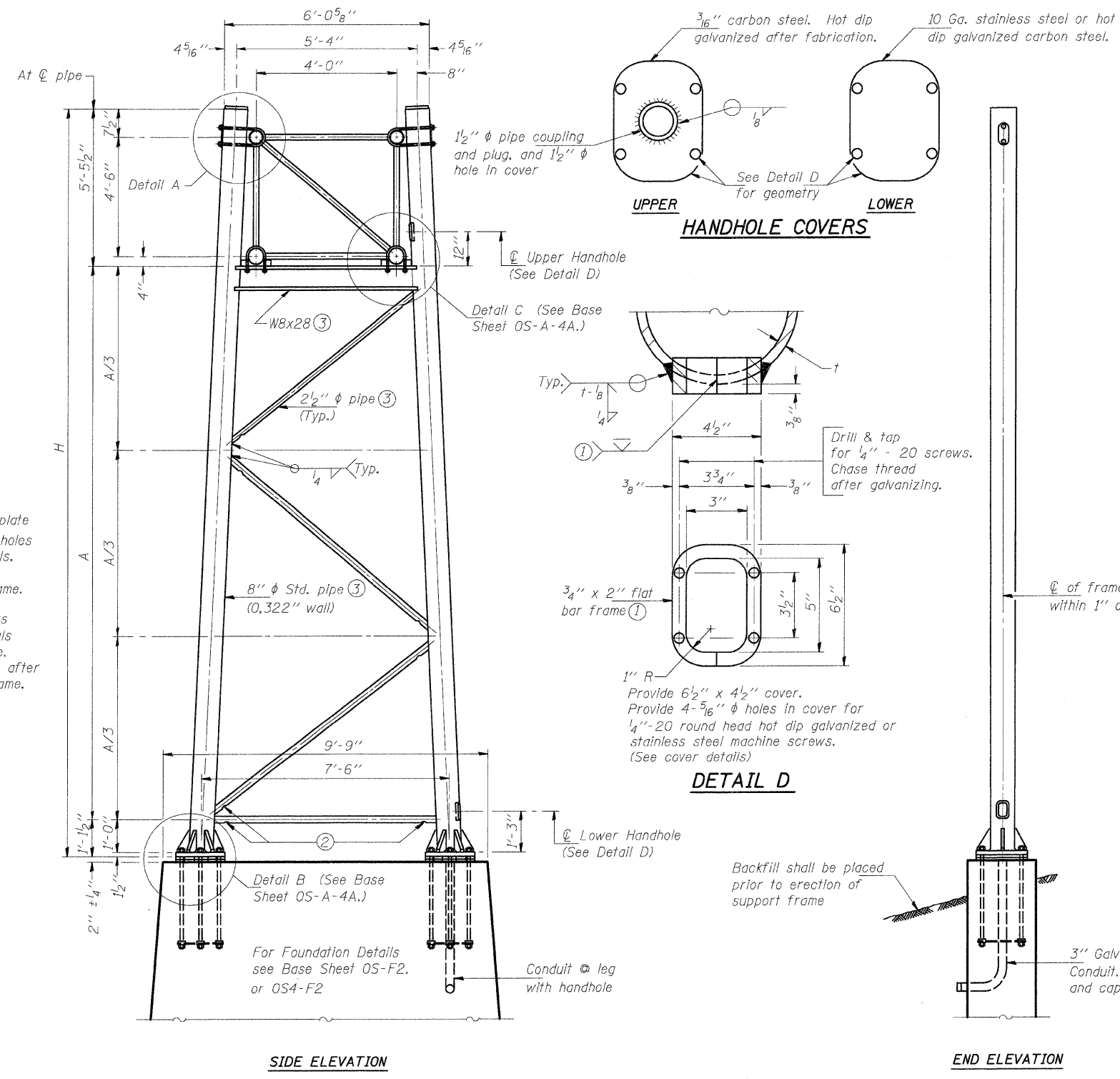
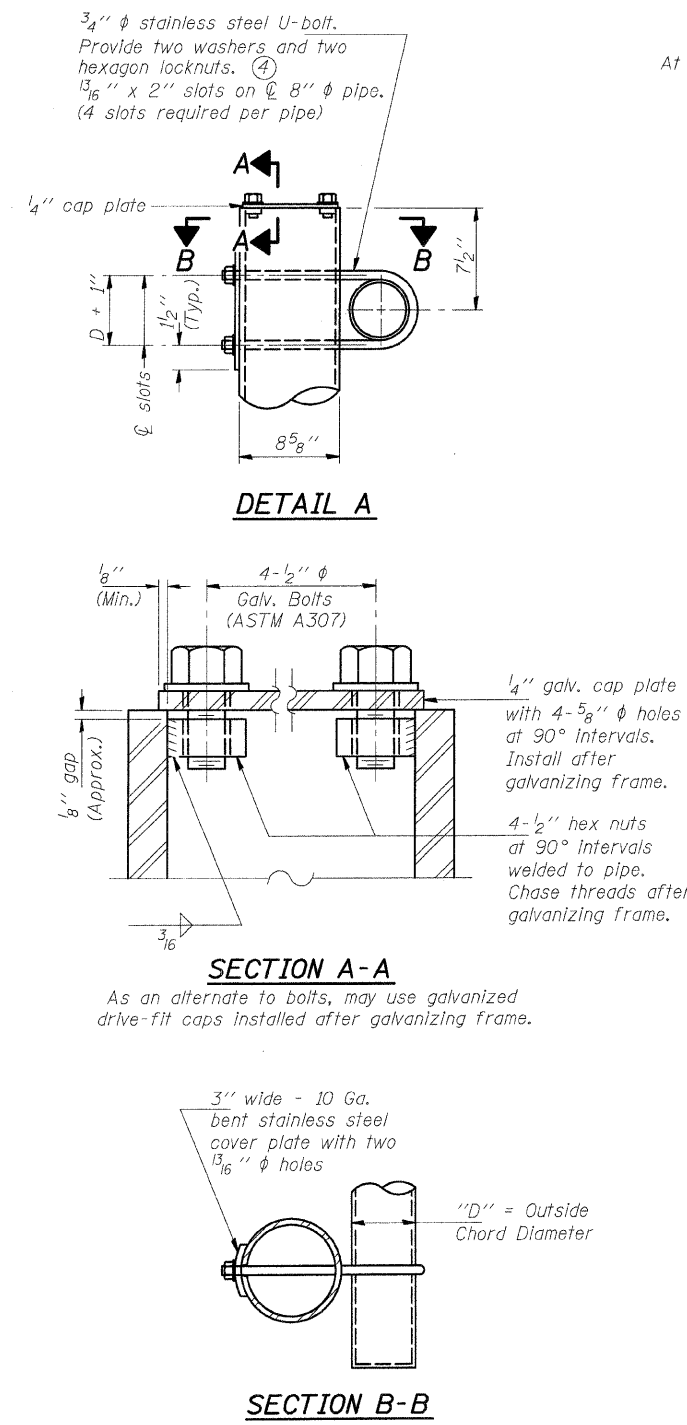


STATE OF ILLINOIS  
DEPARTMENT OF TRANSPORTATION

ROUTE NO.	SECTION	COUNTY	TOTAL SHEETS	SHEET NO.
70	*	MADISON	420	171
FED. ROAD DIST. NO. 6	ILLINOIS	FED. AID PROJECT		
* 60-10K-1, 60-10HB				

SHEET NO. -  
- SHEETS



Support Design Loads: See Base Sheet OS-A-1 for design and loading criteria.  
Load combinations checked include deadload plus:  
a) 100% wind normal to sign, 20% parallel to sign  
b) 60% wind normal to sign, 30% parallel to sign

- ① In lieu of fabricated handhole frame as shown, may cut from 2" plate (rolling direction vertical). All cut faces to be ground to ANSI Roughness of 500 √in or less.
- ② Galvanizing vent holes of adequate size shall be provided on underside at each end of bracing pipes. Alternately, holes may be provided in wall of pipe column. All vent holes shall be drilled and de-burred. (Typ.)
- ③ Steel pipe, plate, carbon steel handhole covers and rolled sections shall be hot dip galvanized after fabrication. Painting is not permitted. See Base Sheet OS-A-1.
- ④ See General Notes for fasteners.
- ⑤ Dimensions shown are based on selection criteria in the Sign Structures Manual. Nonstandard applications must have dimensions verified or amended as appropriate.

Structure Number	Station	Support		H	A
		Left	Right		
850601070L018.3	1337+90	X		27'-5 1/2"	20'-10 1/2"
			X	27'-1"	20'-6"
850601070R017.7	1368+72	X	X	26'-7"	20'-0"

DESIGNED - BTO	20
CHECKED - JAN	EXAMINED
DRAWN - BTO	PASSED
CHECKED - JAN	

NUMBER	REVISION	DATE

**OVERHEAD SIGN STRUCTURES  
SUPPORT FRAME for TYPE I-A ALUMINUM TRUSS**

FAI ROUTE 70  
SECTION 60-10K-1, 60-10-4HB  
MADISON COUNTY

8" φ PIPE TRUSS SUPPORT FRAME