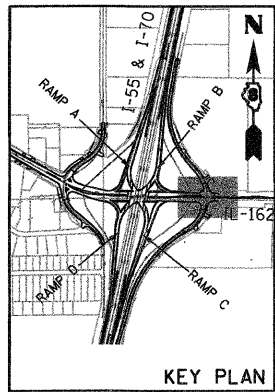


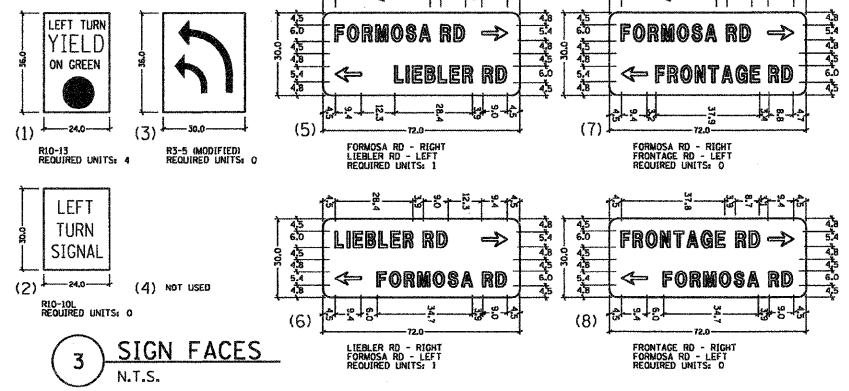
DATE	BY	REVISION

XXXXX.XXX - 100T IL 162 over I-55.70 revisions
 236-TS-07-east.Plan.dgn
 1/28/2009
 4:58:08 PM
 Robert L Swanson

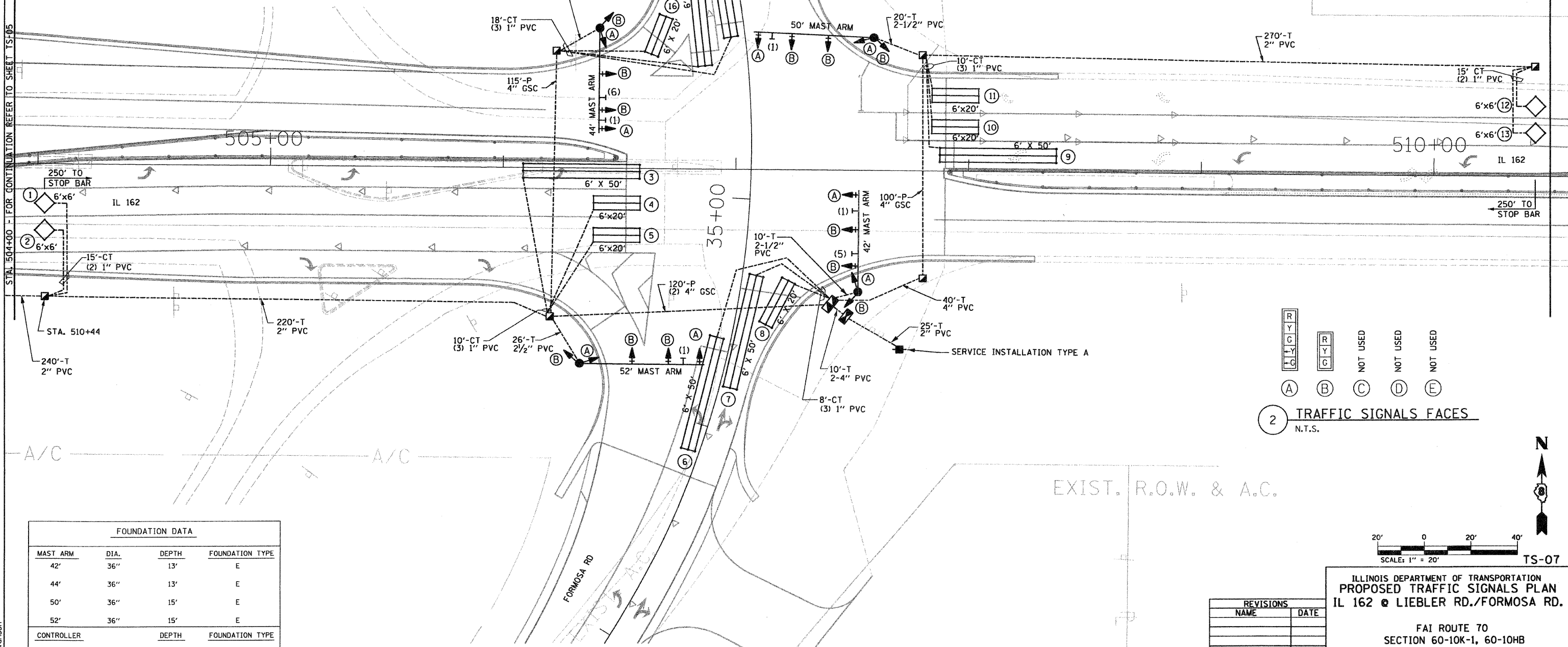


TRAFFIC SIGNALS LEGEND

- PROPOSED
- CONTROLLER [Symbol]
 - SERVICE INSTALLATION [Symbol]
 - GALVANIZED STEEL CONDUIT (T) INDICATES IN TRENCH (P) INDICATES PUSHED
 - HANDHOLE [Symbol]
 - DOUBLE HANDHOLE [Symbol]
 - SIGNAL POST [Symbol]
 - MAST ARM ASSEMBLY AND POLE, STEEL [Symbol]
 - SIGNAL HEAD [Symbol]
 - SIGNAL HEAD WITH BACKPLATE [Symbol]
 - SIGN ON SIGNAL POLE / MAST ARM [Symbol]
 - DETECTOR LOOP [Symbol]
 - ADVANCED DETECTOR LOOP INTERCONNECT SYSTEMS DETECTOR LOOP [Symbol]



APP. NO.	SECTION	COUNTY	TOTAL SHEETS	SHEET NO.
70	60-10 (K-1,HB)	MADISON	420	200
STA. 504+00		TO STA. 510+50		
CONTRACT NO.: 76709				

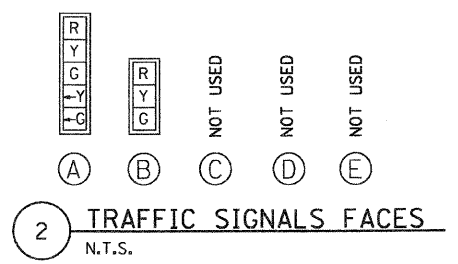


FOUNDATION DATA

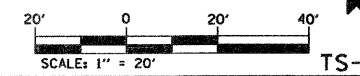
MAST ARM	DIA.	DEPTH	FOUNDATION TYPE
42'	36"	13'	E
44'	36"	13'	E
50'	36"	15'	E
52'	36"	15'	E

CONTROLLER	DEPTH	FOUNDATION TYPE
1	4'	D

1 PROPOSED TRAFFIC SIGNALS PLAN
 1" = 20'-0"



2 TRAFFIC SIGNALS FACES
 N.T.S.



REVISIONS

NAME	DATE

ILLINOIS DEPARTMENT OF TRANSPORTATION
PROPOSED TRAFFIC SIGNALS PLAN
 IL 162 @ LIEBLER RD./FORMOSA RD.

FAI ROUTE 70
 SECTION 60-10K-1, 60-10HB
 MADISON COUNTY

DRAWN BY: RPJ CHECKED BY: A. OSHANA, P.E.

TS-07