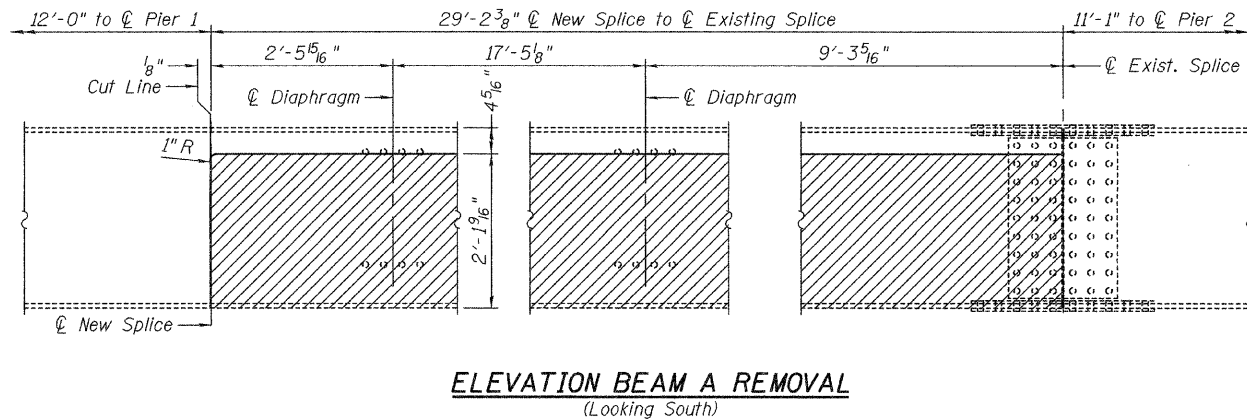
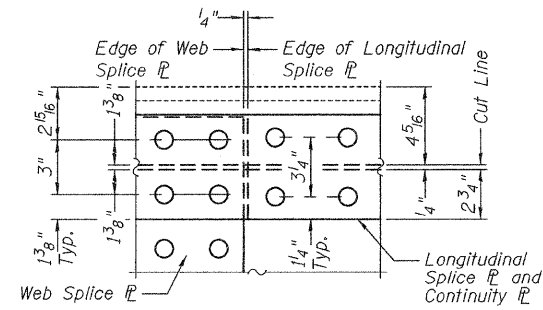
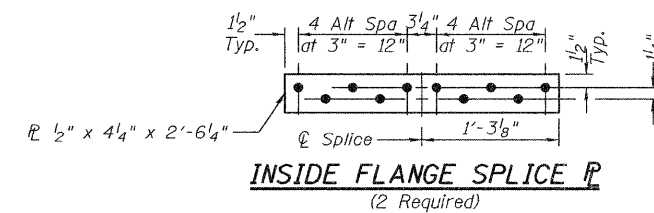
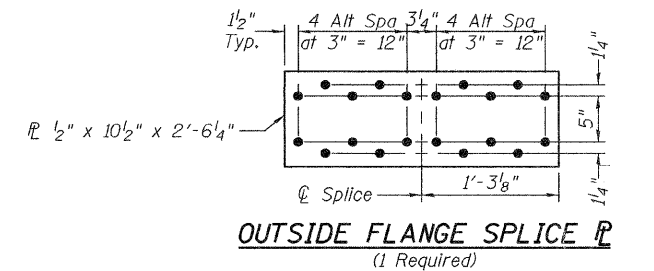
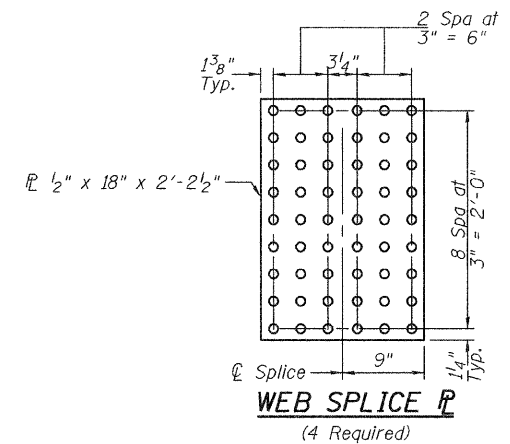
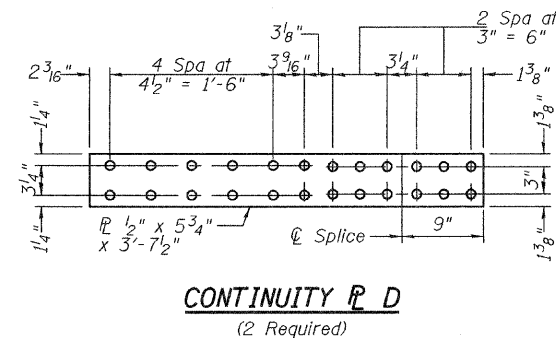
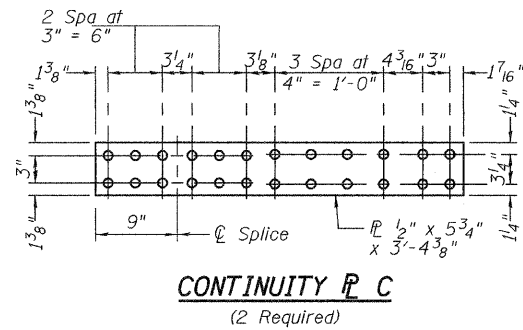
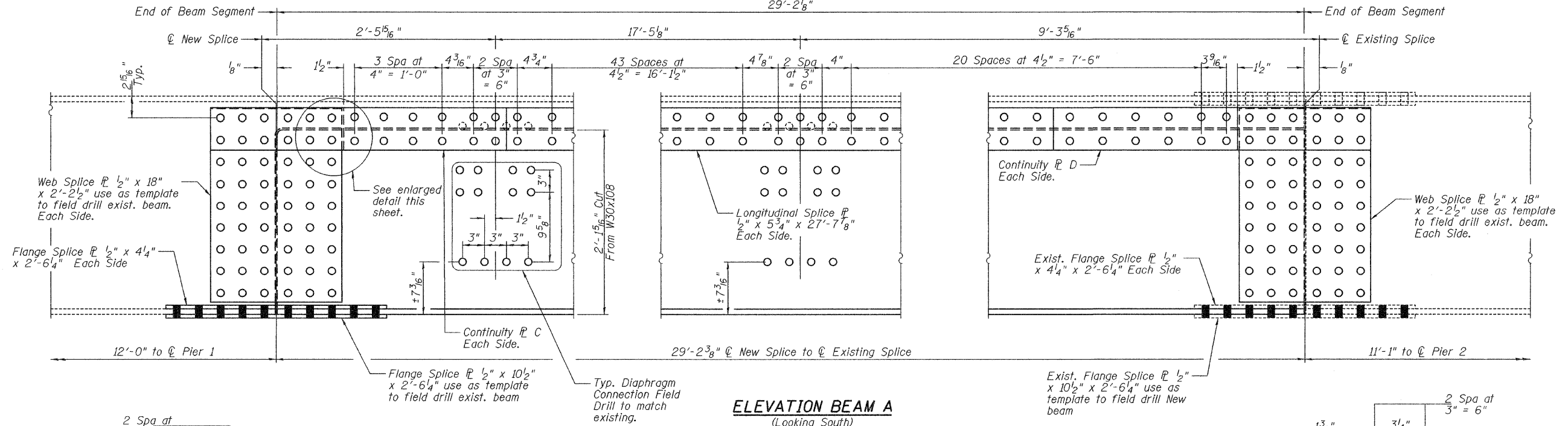


STATE OF ILLINOIS
DEPARTMENT OF TRANSPORTATION
29'-2 1/8"



DESIGNED	V.H.V.
CHECKED	A.T.H.
DRAWN	Drew Christopher
CHECKED	V.H.V. A.T.H.

April 10, 2009
EXAMINED *Carl Perry*
ENGINEER OF STRUCTURAL SERVICES
PASSED *Ralph E. Anderson*
ENGINEER OF BRIDGES AND STRUCTURES

BEAM A DETAILS
SN 060-0139

SHEET NO. 5 5 SHEETS	F.A.I. RTE. 70	SECTION 60-10HB-4R	COUNTY Madison	TOTAL SHEETS 420	SHEET NO. 207E
	FED. ROAD DIST. NO. ILLINOIS FED. AID PROJECT			CONTRACT NO. 76709	