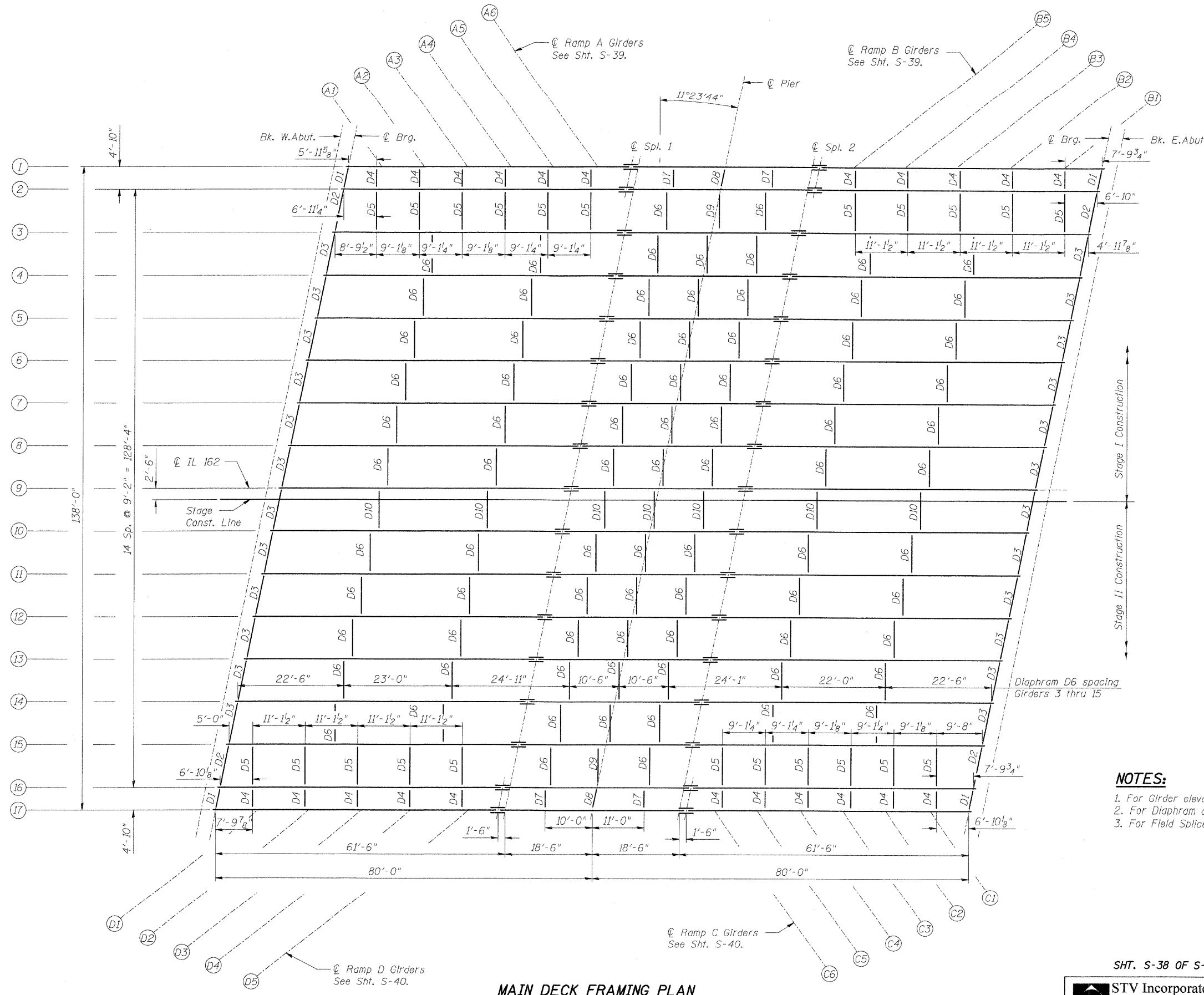


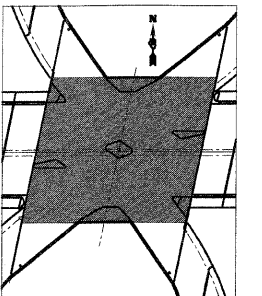
F.A.I. RTE.	SECTION	COUNTY	TOTAL SHEETS	SHEET NO.
70	60-10K-1,60-10HB	MADISON	420	256
STA.		TO STA.		
FED. ROAD DIST. NO.	ILLINOIS	FED. AID PROJECT		
CONTRACT NO. 76709				



MAIN DECK FRAMING PLAN

NOTES:

1. For Girder elevations see Shts. S-41 thru S-43.
2. For Diaphragm details see Shts S-48 & S-49.
3. For Field Splice details see Sht. S-47.



KEY PLAN

REVISIONS	
NAME	DATE

SHT. S-38 OF S-68

STV Incorporated
 Engineers/Architects/Planners/Construction Managers
 200 W. Monroe Street, Suite 1650
 Chicago, IL 60606-2013
 312-953-0655, FAX 312-953-0661

ILLINOIS DEPARTMENT OF TRANSPORTATION
 IL ROUTE 162 OVER I-55/70 IN TROY
 F.A.I ROUTE 70 SECTION 60-10K-1, 60-10HB
 MADISON COUNTY STATION 499+48.35
 STRUCTURE NO. 060-0338

FRAMING PLAN - IL 162

DESIGNED: BTO DRAWN: BTO
 CHECKED: JAN CHECKED: JAN

DATE: 03/06