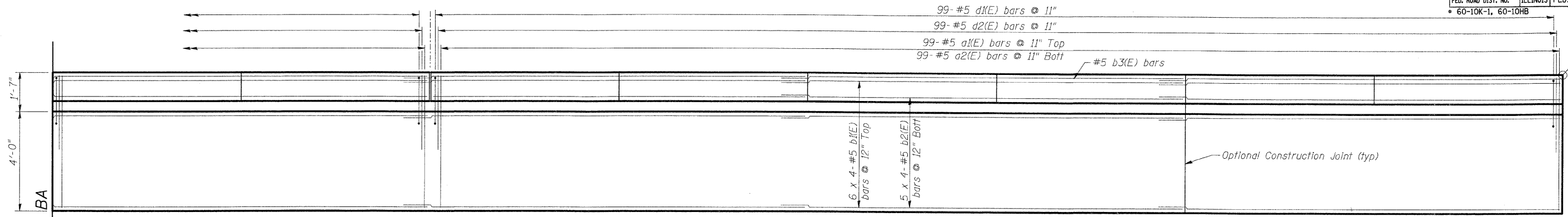
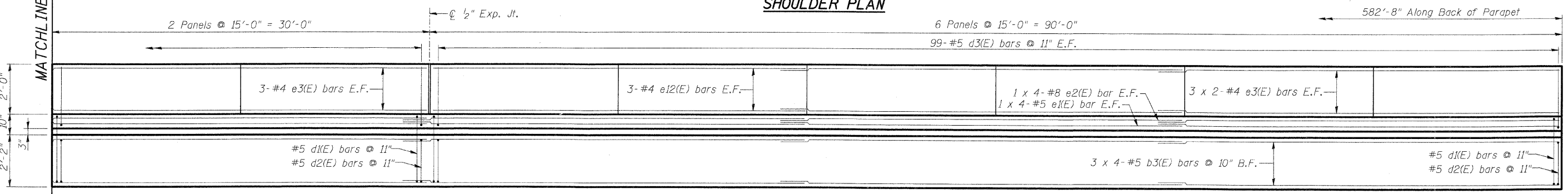


F.A.I. RTE.	SECTION	COUNTY	TOTAL SHEETS	SHEET NO.
70	*	MADISON	420	304
STA.	TO STA.			
FED. ROAD DIST. NO.	ILLINOIS	FED. AID PROJECT		
60-10K-1, 60-10HB		CONTRACT NO. 76709		

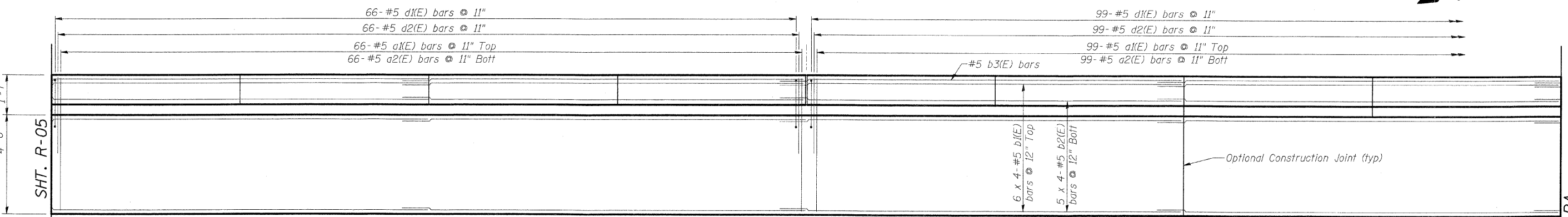


Begin Wall  
Sta. 17+40.00  
@ Ramp B  
29'-2" Lt.  
Bk/Parapet

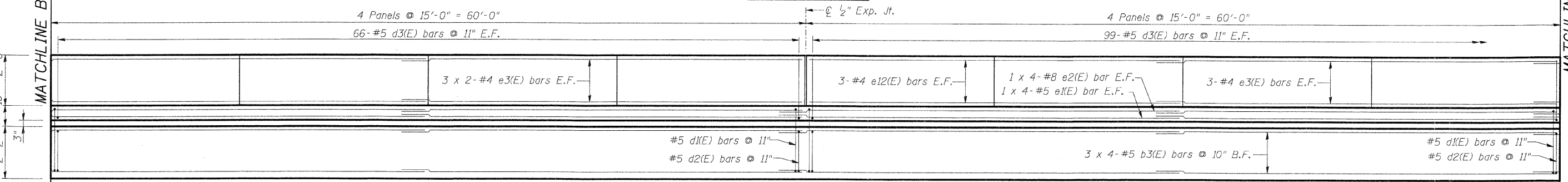
**SHOULDER PLAN**



**INSIDE PARAPET ELEVATION**



**SHOULDER PLAN**



**INSIDE PARAPET ELEVATION**

**MIN. BAR LAP**

- B.F. = Back Face
- E.F. = Each Face
- #4 - 1'-4"
- #5 - 2'-2"
- #8 - 4'-6"

Sht. R-04 of R-13

**STV Incorporated**  
Engineers/Architects/Planners/Construction Managers  
200 W. Monroe Street, Suite 1650  
Chicago, IL 60601-5015  
312/553-0655, FAX 312/553-0661

REVISIONS	
NAME	DATE

ILLINOIS DEPARTMENT OF TRANSPORTATION  
IL ROUTE 162 OVER I-55/70 IN TROY  
F.A.I ROUTE 70 SECTION 60-10K-1, 60-10HB  
MADISON COUNTY STA. 17+40 TO STA. 22+50  
STRUCTURE NO. 060-W006

**PARAPET ELEVATIONS & SHOULDER PLANS  
RAMP B**

DATE: 05/2006

DRAWN BY KM  
CHECKED BY BJK