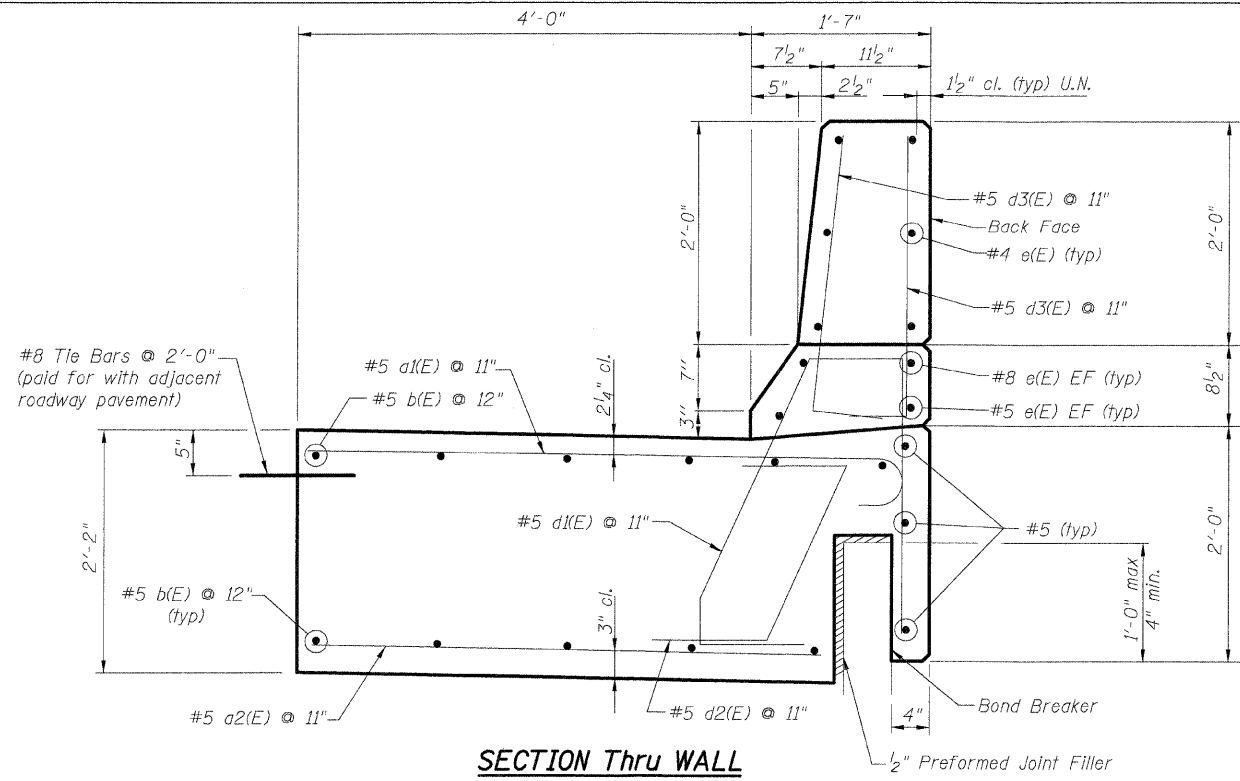


**BILL OF MATERIAL
RAMP B**

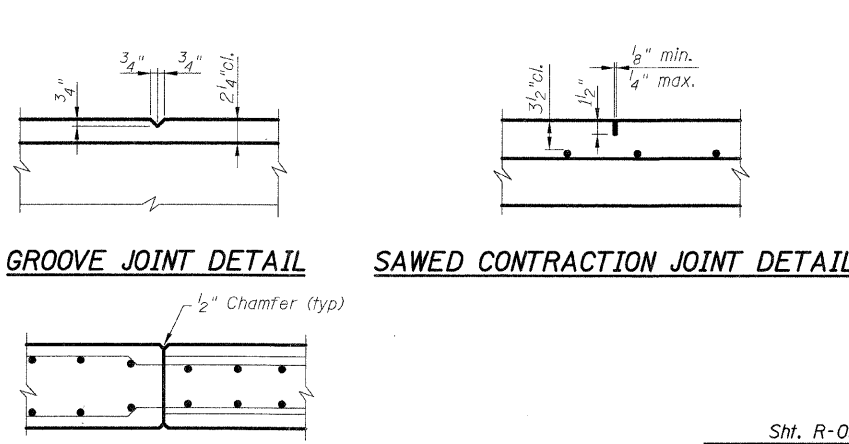
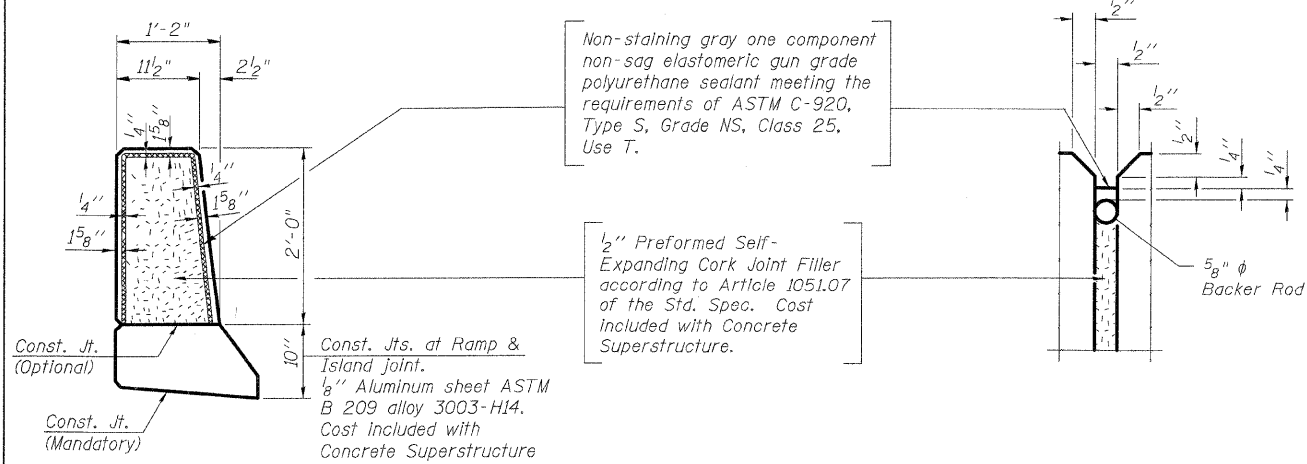
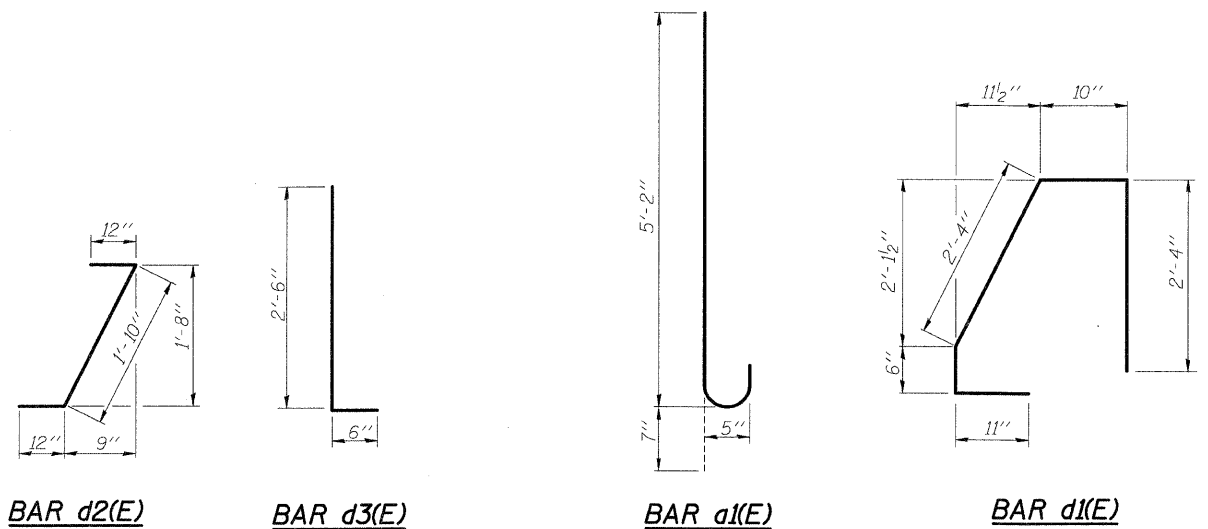
Reinforcing		Bar Length		Shape
Bar	No.	Size	Feet Inches	
a1(E)	641	5	5 9	U
a2(E)	641	5	4 4	U
b1(E)	78	5	32 4	U
b2(E)	65	5	32 3	U
b3(E)	39	5	32 2	U
b4(E)	6	5	18 7	U
b5(E)	5	5	18 6	U
b6(E)	3	5	18 5	U
b7(E)	6	5	29 2	U
b8(E)	5	5	29 1	U
b9(E)	3	5	29 0	U
b10(E)	24	5	32 10	U
b11(E)	20	5	32 9	U
b12(E)	12	5	32 8	U
b13(E)	6	5	30 3	U
b14(E)	5	5	30 2	U
b15(E)	3	5	30 1	U
d1(E)	641	5	6 11	U
d2(E)	641	5	3 10	U
d3(E)	1,282	5	3 0	U
e1(E)	26	5	32 2	U
e2(E)	26	8	34 6	U
e3(E)	54	4	31 4	U
e4(E)	2	5	18 5	U
e5(E)	2	5	29 0	U
e6(E)	8	5	32 8	U
e7(E)	2	5	30 0	U
e8(E)	2	8	20 9	U
e9(E)	2	8	31 4	U
e10(E)	8	8	35 0	U
e11(E)	2	8	30 2	U
e12(E)	24	4	29 8	U
e13(E)	6	4	15 11	U
e14(E)	6	4	28 2	U
e15(E)	18	4	31 10	U
e16(E)	12	4	30 2	U
Reinforcement Bars, Epoxy Coated	Pound	34,420		
Concrete Structures	CU YD	322		
Protective Coat	SQ YD	514		

**BILL OF MATERIAL
RAMP C**

Reinforcing		Bar Length		Shape
Bar	No.	Size	Feet Inches	
a1(E)	453	5	5 9	U
a2(E)	453	5	4 4	U
b1(E)	48	5	32 4	U
b2(E)	40	5	32 3	U
b3(E)	24	5	32 2	U
b4(E)	6	5	24 7	U
b5(E)	5	5	24 6	U
b6(E)	3	5	24 5	U
b7(E)	6	5	31 10	U
b8(E)	5	5	31 9	U
b9(E)	3	5	31 8	U
b10(E)	18	5	33 0	U
b11(E)	15	5	32 11	U
b12(E)	9	5	32 10	U
b13(E)	6	5	30 6	U
b14(E)	5	5	30 5	U
b15(E)	3	5	30 4	U
d1(E)	453	5	6 11	U
d2(E)	453	5	3 10	U
d3(E)	906	5	3 0	U
e1(E)	16	5	32 2	U
e2(E)	16	8	34 6	U
e3(E)	36	4	31 4	U
e4(E)	2	5	24 5	U
e5(E)	2	5	31 8	U
e6(E)	6	5	32 10	U
e7(E)	2	5	30 4	U
e8(E)	2	8	26 9	U
e9(E)	2	8	34 0	U
e10(E)	6	8	35 2	U
e11(E)	2	8	30 4	U
e12(E)	12	4	29 8	U
e13(E)	6	4	21 11	U
e14(E)	6	4	30 9	U
e15(E)	12	4	32 0	U
e16(E)	12	4	30 4	U
Reinforcement Bars, Epoxy Coated	Pound	24,310		
Concrete Structures	CU YD	227		
Protective Coat	SQ YD	362		



NOTE:
Parapet Stem Height Varies from 2'-0" to 2'-2" at Bridge Approach Parapet.



PARAPET CONSTRUCTION JOINT DETAIL

- NOTES:**
1. Reinforcement bars designated (E) shall be Epoxy Coated.
 2. Bars indicated thus: 3 x 2-#4 etc. indicates 3 lines of bars with 2 lengths per line.
 3. Bundle bars according to Ramp B or Ramp C.

REVISIONS	
NAME	DATE

ILLINOIS DEPARTMENT OF TRANSPORTATION
IL ROUTE 162 OVER I-55/70 IN TROY
F.A.I ROUTE 70 SECTION 60-10K-1, 60-10HB
MADISON COUNTY STA. 17+40 TO STA. 22+50
STRUCTURE NO. 060-W006
**PARAPET & ANCHORAGE SLAB DETAILS
RAMP B & C**
DRAWN BY KM
CHECKED BY BJC
DATE: 05/2006

Sht. R-09 of R-13
STV Incorporated
Engineers/Architects/Planners/Construction Managers
200 W. Monroe Street, Suite 1650
Chicago, IL 60606-5015
312-553-0655, FAX 312-553-0661