

STATE OF ILLINOIS
DEPARTMENT OF TRANSPORTATION
DIVISION OF HIGHWAYS

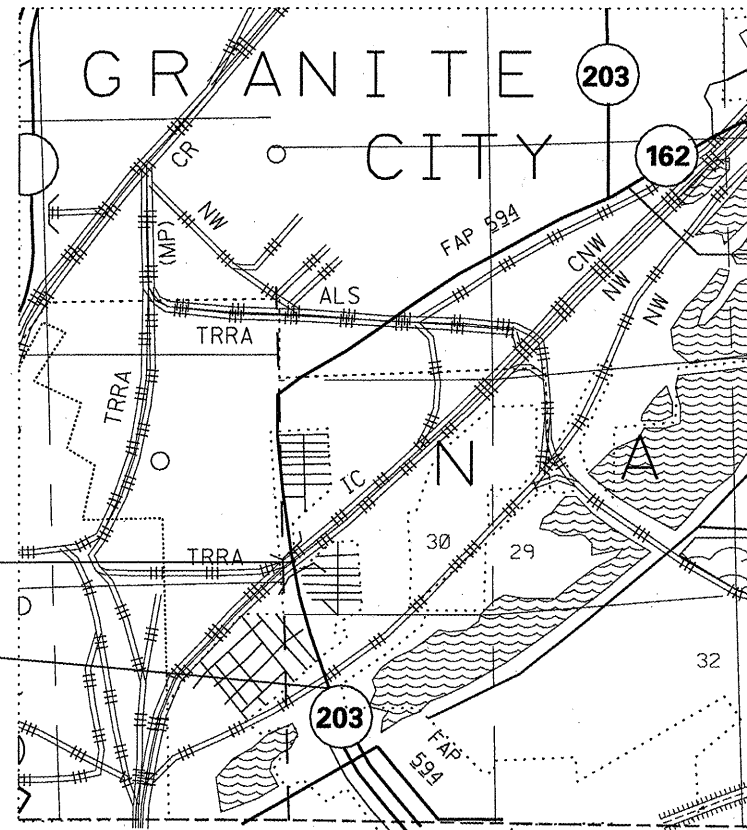
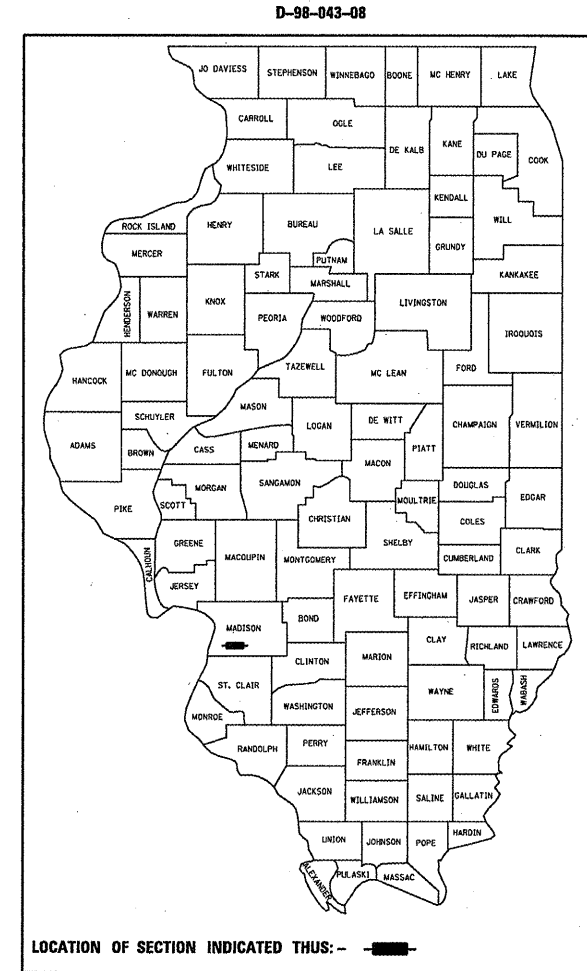
**PROPOSED
HIGHWAY PLANS**

FAP ROUTE 594 (IL 203)
SECTION (61-63)RS-3

MADISON COUNTY
RESURFACING
C-98-039-08

F.A.P. RTE.	SECTION	COUNTY	TOTAL SHEETS	SHEET NO.
594	61-63RS-3	MADISON	40	1
FED. ROAD DIST. NO.	ILLINOIS	CONTRACT NO. 76B71		

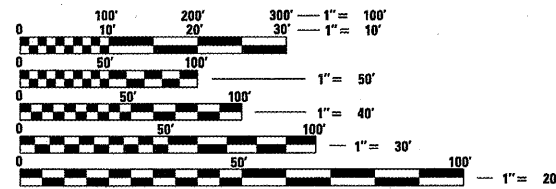
FOR INDEX OF SHEETS, SEE SHEET NO. 2



END PROJECT
STA. 317+72
LAT = 38°41'57.1"N
LONG = -90°7'14.6"W

BRIDGE OMISSION
STA. 187+25 - 188+15

BEGIN PROJECT
STA. 155+96
LAT = 38°39'51.5"N
LONG = -90°8'33"W



FULL SIZE PLANS HAVE BEEN PREPARED USING STANDARD ENGINEERING SCALES. REDUCED SIZED PLANS WILL NOT CONFORM TO STANDARD SCALES. IN MAKING MEASUREMENTS ON REDUCED PLANS, THE ABOVE SCALES MAY BE USED.

J.U.L.I.E.
JOINT UTILITY LOCATION INFORMATION FOR EXCAVATION
1-800-892-0123
OR 811

PROJECT ENGINEER: CHERYL KEPLAR 618-346-3186
PROJECT MANAGER: PATTI LEBEAU 618-346-3179

CONTRACT NO. 76B71

NET LENGTH = 16,086 FT. = 3.05 MILES
GROSS LENGTH = 16,176 FT. = 3.06 MILES

STATE OF ILLINOIS
DEPARTMENT OF TRANSPORTATION
DIVISION OF HIGHWAYS

SUBMITTED *March 26 20 09*

Max C. James
DEPUTY DIRECTOR OF HIGHWAYS, REGION 5 ENGINEER

May 8 20 09
Charles J. Invernizzi
ENGINEER OF DESIGN AND ENVIRONMENT

May 8 20 09
Christina M. Reed
DIRECTOR OF HIGHWAYS, CHIEF ENGINEER

PRINTED BY THE AUTHORITY
OF THE STATE OF ILLINOIS