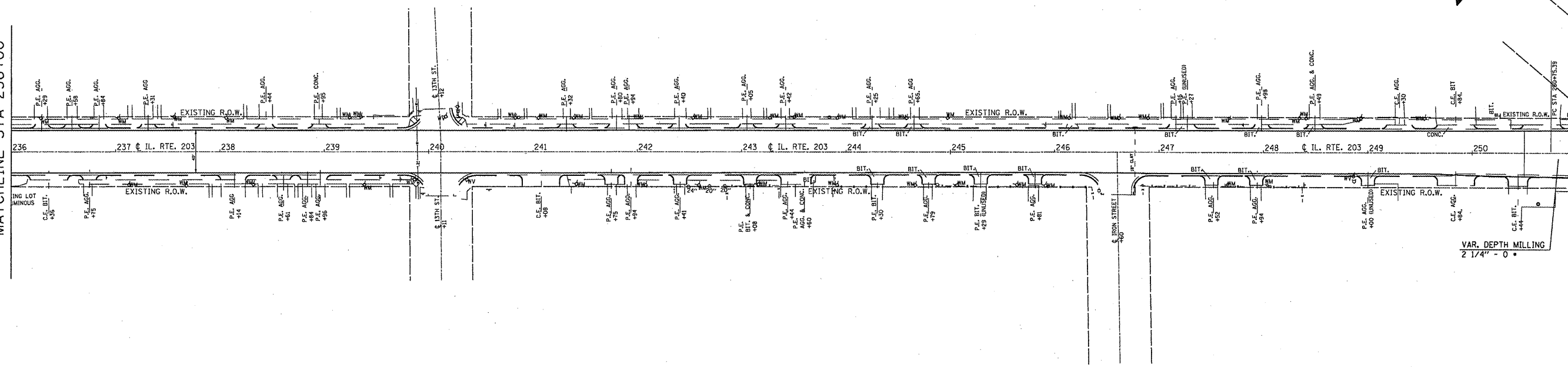
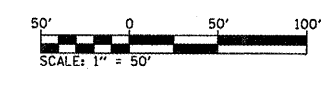


MATCHLINE STA 236+00

MATCHLINE STA 251+00

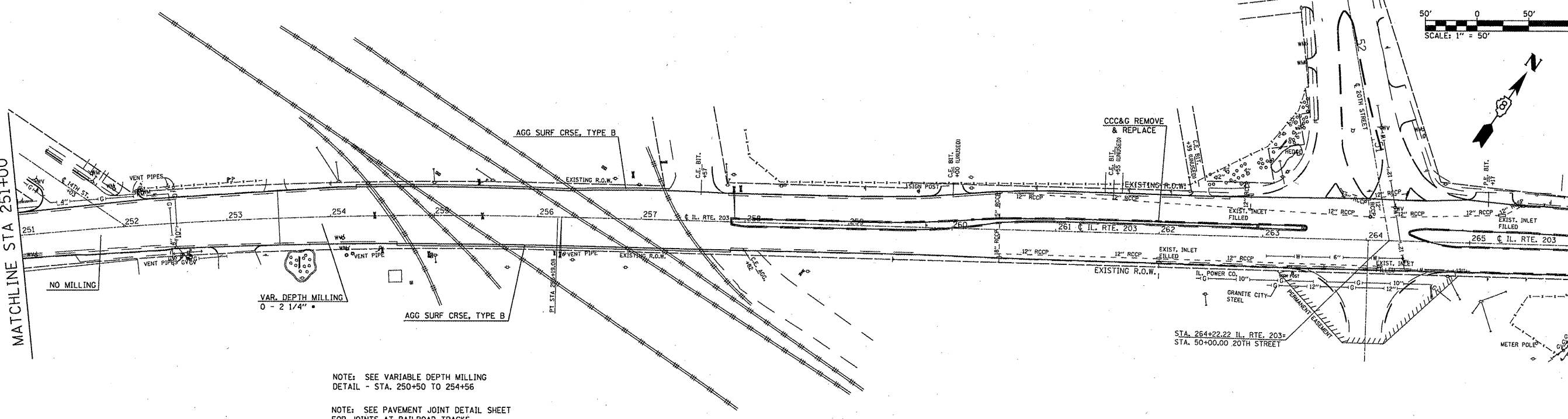


*PAID AS HOT-MIX ASPHALT SURFACE REMOVAL, 2 1/4"



MATCHLINE STA 251+00

MATCHLINE STA 266+00



NOTE: SEE VARIABLE DEPTH MILLING
DETAIL - STA. 250+50 TO 254+56

NOTE: SEE PAVEMENT JOINT DETAIL SHEET
FOR JOINTS AT RAILROAD TRACKS.

*PAID AS HOT-MIX ASPHALT SURFACE REMOVAL, 2 1/4"

FILE NAME = #FILE#	USER NAME = #USER#	DESIGNED - ---	REVISED - ---	STATE OF ILLINOIS DEPARTMENT OF TRANSPORTATION	PLAN SHEETS			F.A.P. RTE.	SECTION	COUNTY	TOTAL SHEETS	SHEET NO.
	PLOT SCALE = #SCALE#	CHECKED - ---	REVISED - ---					594	(61-63)RS-3	MADISON	40	18
	PLOT DATE = #DATE#	DATE - ---	REVISED - ---		SCALE: 1" = 50'	SHEET NO. 4 OF 6 SHEETS	STA. 236+00 TO STA. 266+00	CONTRACT NO. 76B71		FED. ROAD DIST. NO. [ILLINOIS] FED. AID PROJECT		