

F.A.I. RTE.	SECTION	COUNTY	TOTAL SHEETS	SHEET NO.
255	82-1B-3-I	ST CLAIR	21	1
FED. ROAD DIST. NO.	ILLINOIS	CONTRACT NO. 76C67		

* 21+2 = 23

D-98-016-09



LOCATION OF SECTION INDICATED THUS: - ■ -

INDEX OF SHEETS

1. COVER SHEET
2. SUMMARY OF QUANTITIES
- * 3. GENERAL NOTES / SCHEDULE OF QUANTITIES
4. TRAFFIC CONTROL SIGNING PLAN
- 5 - 7. SUGGESTED STAGE I CONSTRUCTION & TRAFFIC CONTROL
- 8 - 10. SUGGESTED STAGE II CONSTRUCTION & TRAFFIC CONTROL
11. PAVEMENT MARKING DETAILS
- 12 - 21. STRUCTURE PLANS

* 3A. TYPICAL SECTION
3B. PLAN VIEW / MISCELLANEOUS DETAILS

STATE OF ILLINOIS
DEPARTMENT OF TRANSPORTATION
DIVISION OF HIGHWAYS

PROPOSED
HIGHWAY PLANS

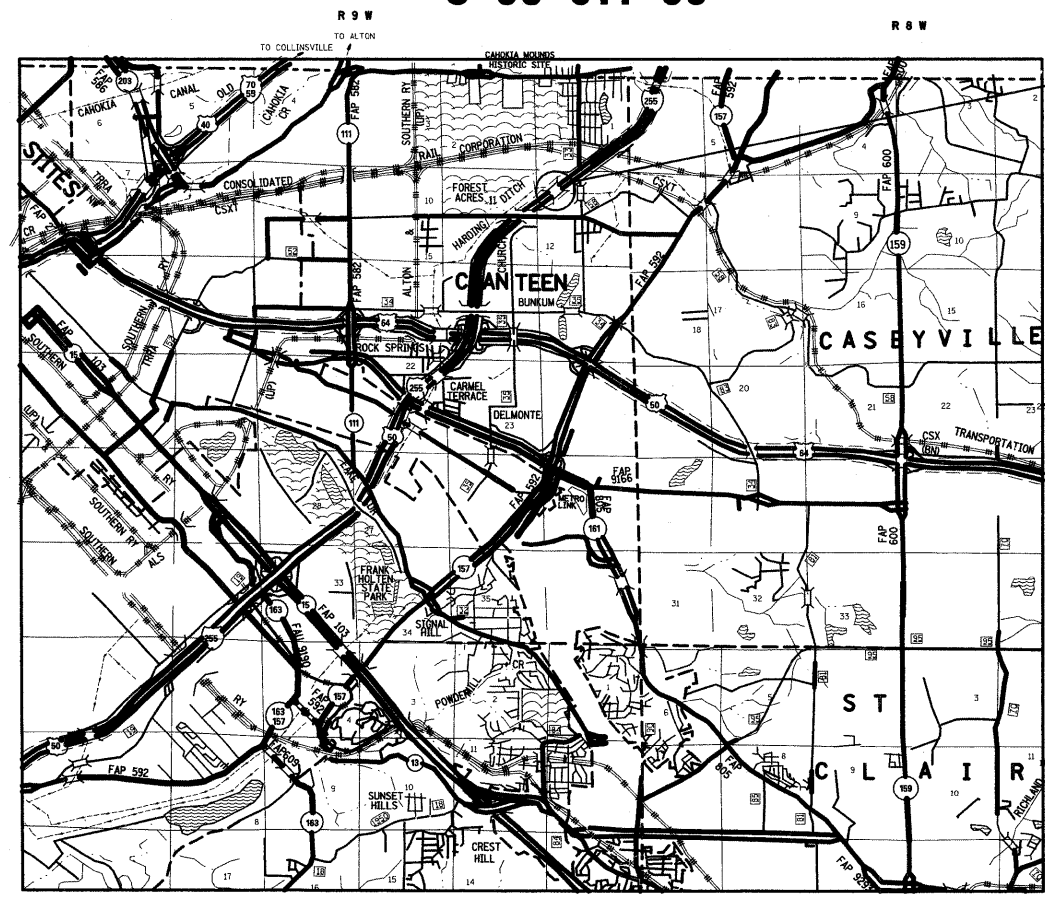
FAI ROUTE 255 (I-255 NB)
SECTION 82-1B-3-I

JOINT REPAIR OVER HARDING DITCH
ST CLAIR COUNTY
C-98-011-09

HIGHWAY STANDARDS

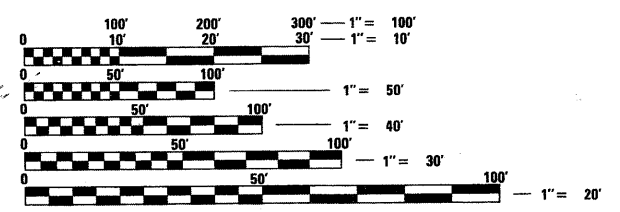
000001-05	701406-05
001001-02	701901-01
001006	704001-05
701400-03	780001-02
701402-07	781001-03

JOINT REPAIR
OVER HARDING DITCH
SN 082-0245
347'-0" BK TO BK OF ABUTMENTS
STA 1148+95.00



T 2 N

T 2 N

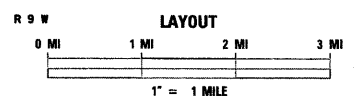


FULL SIZE PLANS HAVE BEEN PREPARED USING STANDARD ENGINEERING SCALES. REDUCED SIZED PLANS WILL NOT CONFORM TO STANDARD SCALES. IN MAKING MEASUREMENTS ON REDUCED PLANS, THE ABOVE SCALES MAY BE USED.

J.U.L.I.E.
JOINT UTILITY LOCATION INFORMATION FOR EXCAVATION
1-800-892-0123
OR 811

PROJECT ENGINEER: PATTI LEBEAU (618) 346-3179
PROJECT MANAGER: ART MUEHLFELD (618) 346-3209

CONTRACT NO. 76C67



GROSS LENGTH = 1885.50 FT = 0.357 MILES
NET LENGTH = 1885.50 FT = 0.357 MILES

SN 082-0245 LATITUDE: 38.64005 LONGITUDE: 90.05246
SN 082-0246 LATITUDE: 38.64014 LONGITUDE: 90.05231

STATE OF ILLINOIS
DEPARTMENT OF TRANSPORTATION
DIVISION OF HIGHWAYS

SUBMITTED April 7 20 09
Max C Lami
DEPUTY DIRECTOR OF HIGHWAYS, REGION 5 ENGINEER

May 1, 20 09
Charles J. Ingersoll
ENGINEER OF DESIGN AND ENVIRONMENT

May 1, 20 09
Christine M. Reed
DIRECTOR OF HIGHWAYS, CHIEF ENGINEER

PRINTED BY THE AUTHORITY
OF THE STATE OF ILLINOIS