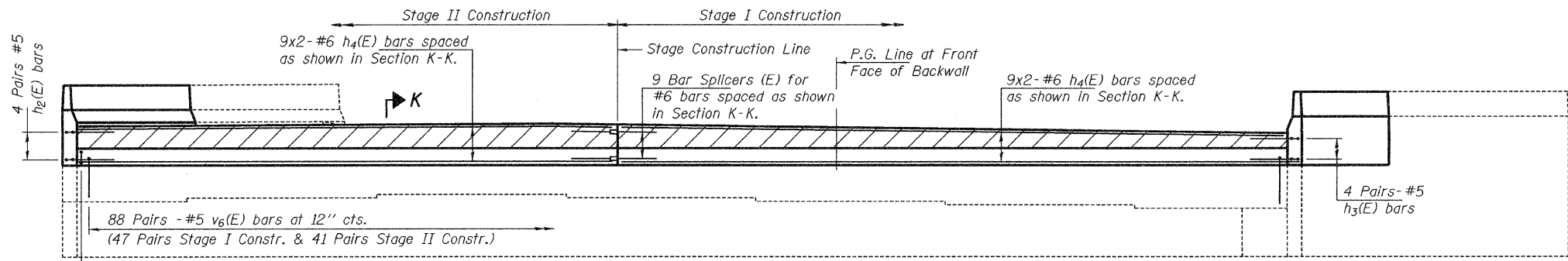


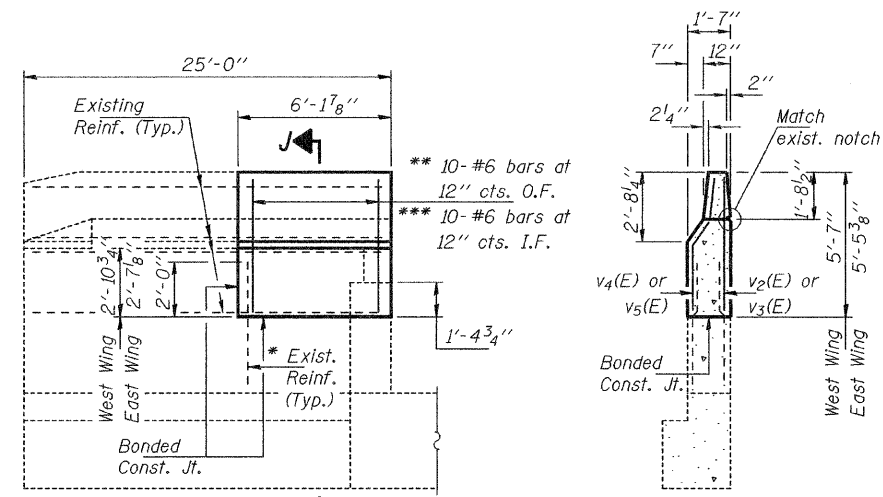
STATE OF ILLINOIS
DEPARTMENT OF TRANSPORTATION



88 Pairs - #5 v6(E) bars at 12" cts.
(47 Pairs Stage I Constr. & 41 Pairs Stage II Constr.)

88-#5 s(E) bars at 12" cts.
(47 bars Stage I Constr. & 41 bars Stage II Constr.)

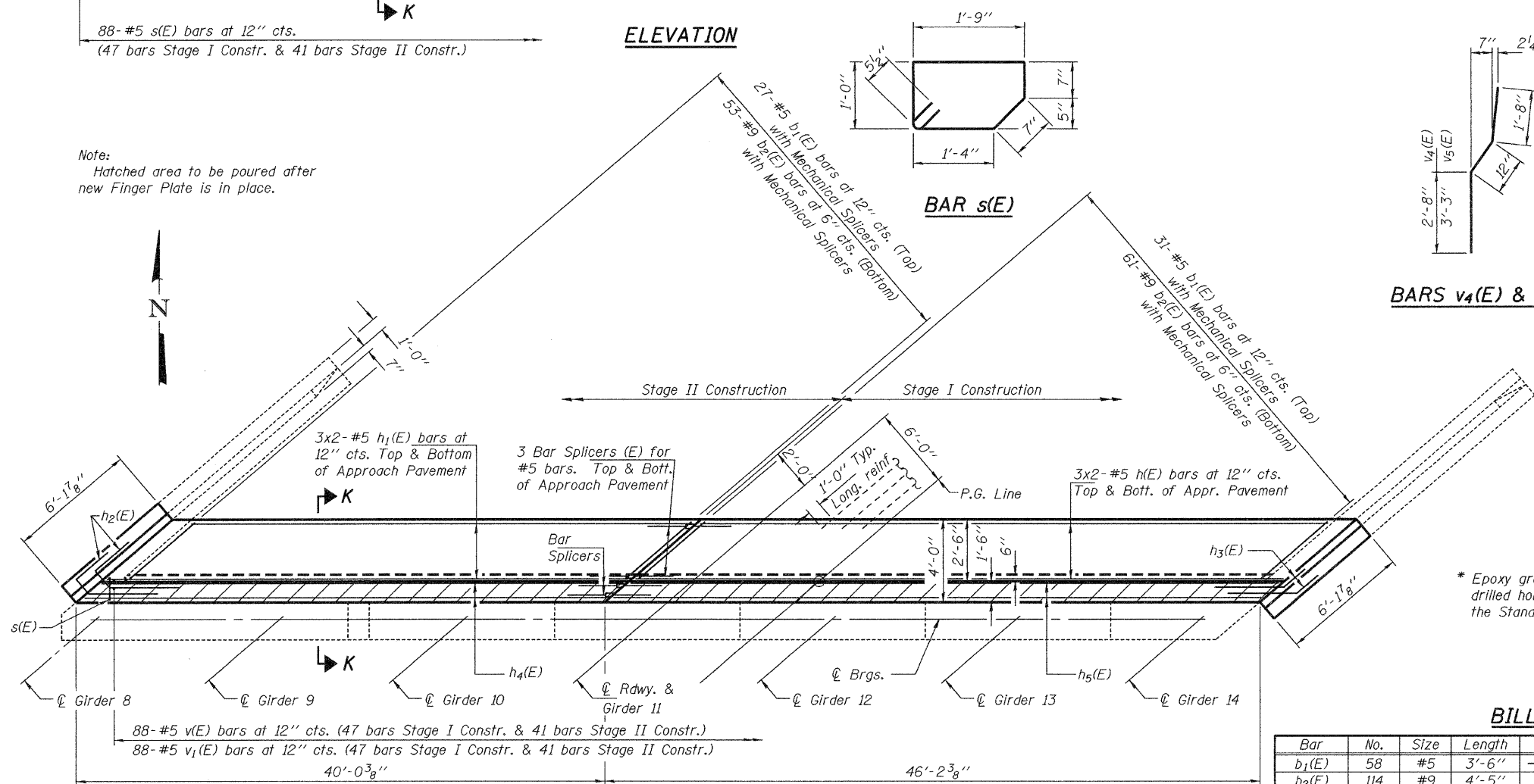
ELEVATION



**INSIDE ELEVATION
WING WALL**
(E. Wing shown, W. Wing similar)

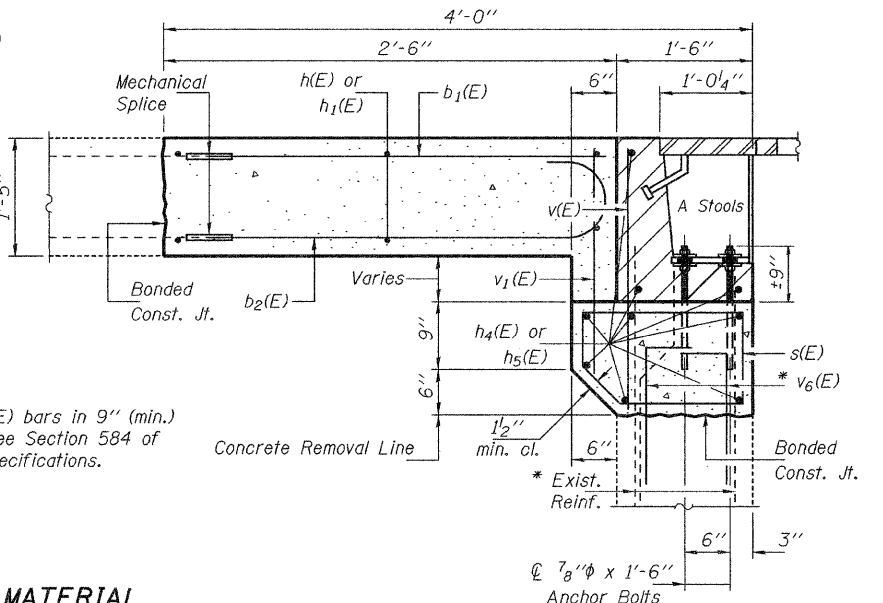
SECTION J-J

Note:
Hatched area to be poured after
new Finger Plate is in place.



BAR s(E)

BARS v4(E) & v5(E)



SECTION K-K

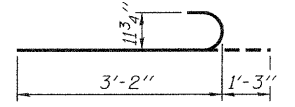
* Epoxy grout v6(E) bars in 9" (min.)
drilled holes. See Section 584 of
the Standard Specifications.

BILL OF MATERIAL

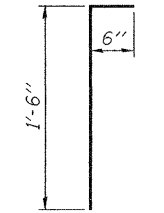
Bar	No.	Size	Length	Shape	Bar	No.	Size	Length	Shape
b1(E)	58	#5	3'-6"	—	v(E)	88	#5	2'-6"	—
b2(E)	114	#9	4'-5"	—	v1(E)	88	#5	2'-0"	—
					v2(E)	10	#6	5'-1"	—
h(E)	6	#5	23'-10"	—	v3(E)	10	#6	5'-8"	—
h1(E)	6	#5	20'-9"	—	v4(E)	10	#6	5'-4"	—
h2(E)	8	#5	9'-5"	—	v5(E)	10	#6	5'-11"	—
h3(E)	8	#5	7'-0"	—	v6(E)	176	#5	2'-0"	—
h4(E)	9	#6	23'-10"	—	Concrete Removal		Cu. Yd.	28.4	
h5(E)	9	#6	20'-9"	—	Concrete Superstructure		Cu. Yd.	30.3	
s(E)	88	#5	6'-2"	—	Reinforcement Bars, Epoxy Coated		Pound	4620	
					Mechanical Splice		Each	172	
					Bar Splicers		Each	15	

Bars indicated thus 3 x 2-#5 etc. indicates 3 lines of bars with 2 lengths per line.

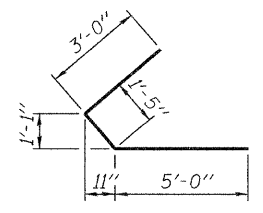
**CONCRETE REPLACEMENT
DETAILS AT NORTH ABUTMENT
SN 082-0245 (N.B.)**



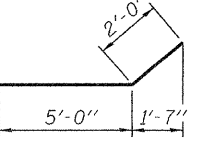
BAR b2(E)



BAR v6(E)



BAR h2(E)



BAR h3(E)

MIN. LAP
#5 Bars = 1'-8"
#6 Bars = 2'-2"

DESIGNED	AJB
CHECKED	VHV
DRAWN	Kyle M. Steffen
CHECKED	AJB VHV

MAY 28, 2009
EXAMINED *Carl Proyer*
ENGINEER OF STRUCTURAL SERVICES
PASSED *Ralph E. Anderson*
ENGINEER OF BRIDGES AND STRUCTURES

SHEET NO. 8	F.A.I. RTE.	SECTION	COUNTY	TOTAL SHEETS	SHEET NO.
	255	82-1B-3-1	ST. CLAIR	21	18
10 SHEETS	FED. ROAD DIST. NO.		ILLINOIS FED. AID PROJECT		
		CONTRACT NO. 76C67			