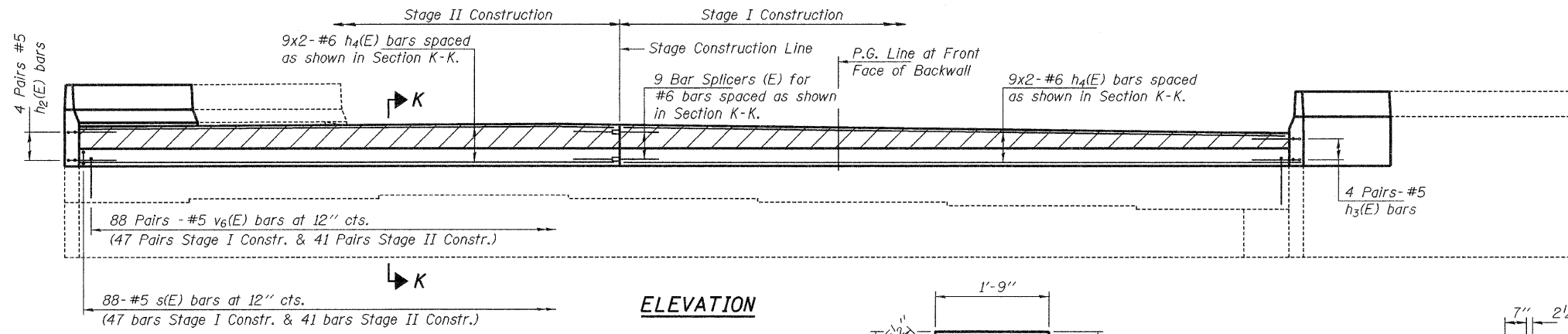
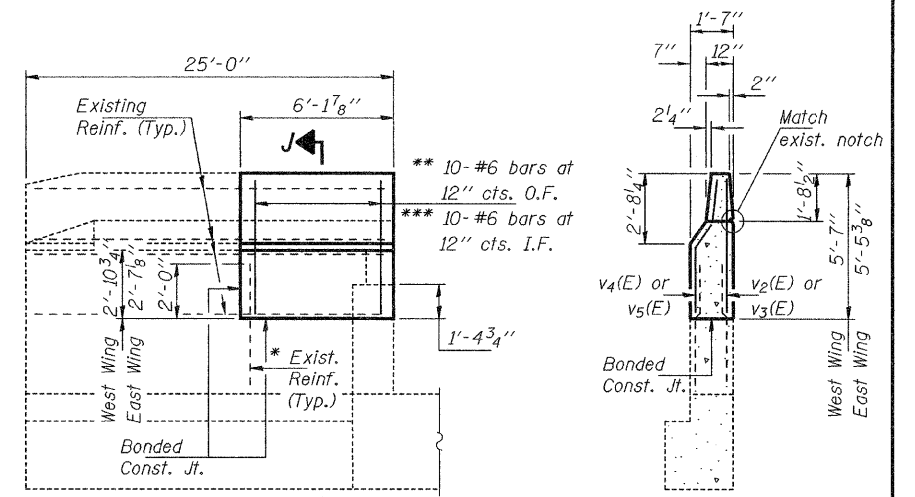


STATE OF ILLINOIS
DEPARTMENT OF TRANSPORTATION

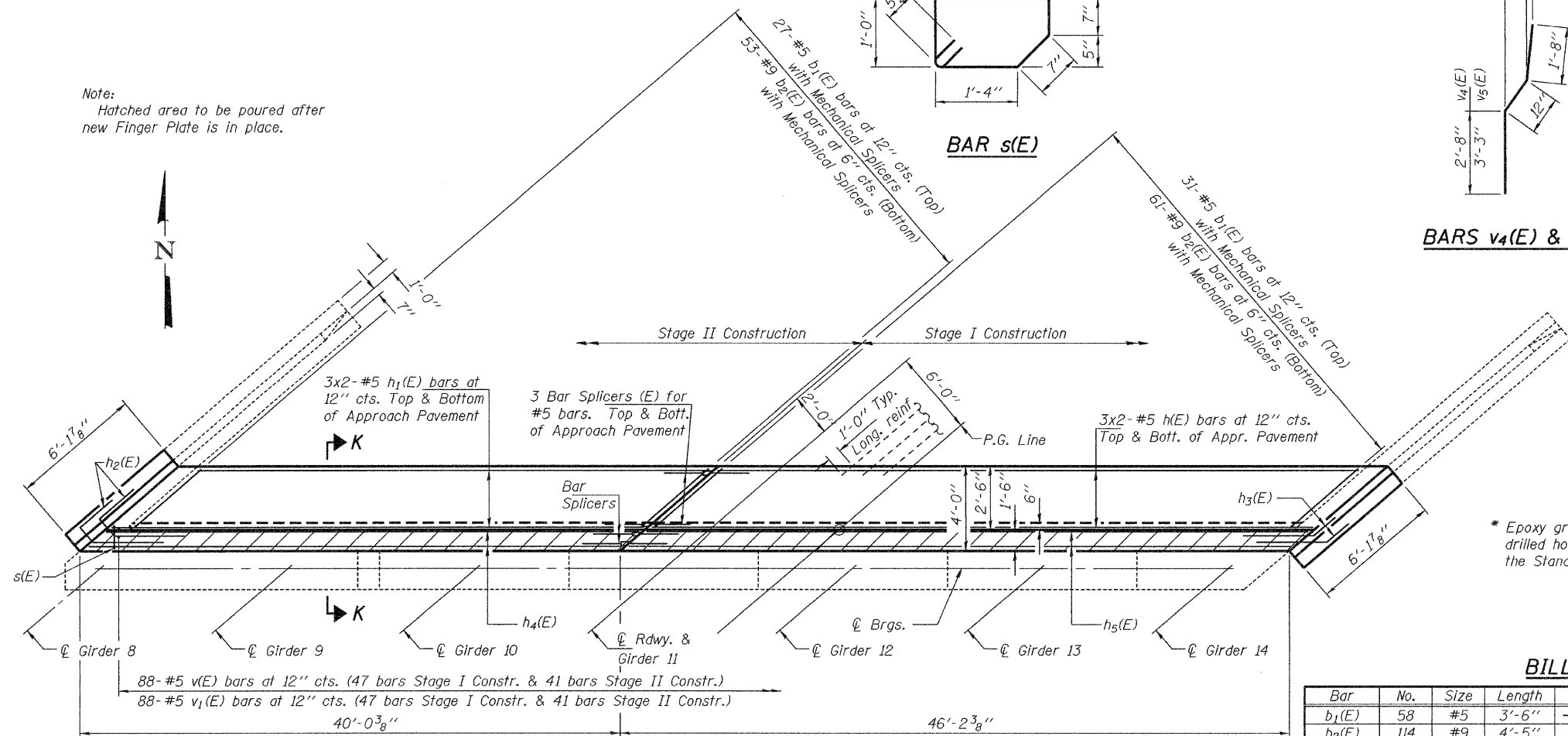


Note:
Hatched area to be poured after new Finger Plate is in place.

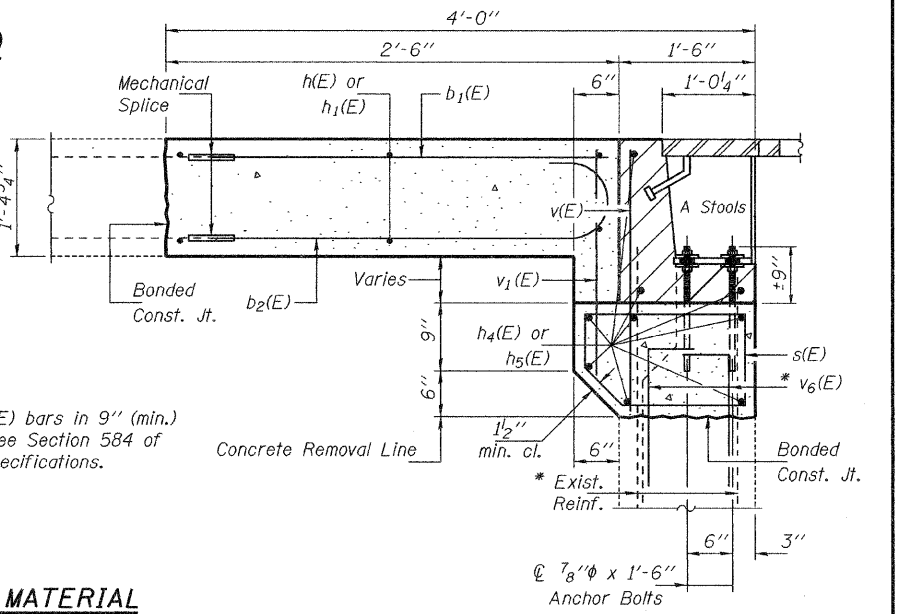


INSIDE ELEVATION
WING WALL
(E. Wing shown, W. Wing similar)

SECTION J-J



BARS v4(E) & v5(E)



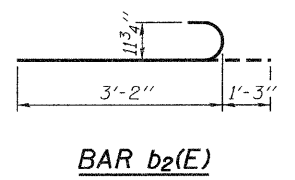
SECTION K-K

BILL OF MATERIAL

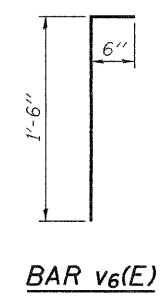
Bar	No.	Size	Length	Shape	Bar	No.	Size	Length	Shape
b1(E)	58	#5	3'-6"	—	v(E)	88	#5	2'-6"	—
b2(E)	114	#9	4'-5"	—	v1(E)	88	#5	2'-0"	—
h(E)	6	#5	23'-10"	—	v2(E)	10	#6	5'-1"	—
h1(E)	6	#5	20'-9"	—	v3(E)	10	#6	5'-8"	—
h2(E)	8	#5	9'-5"	—	v4(E)	10	#6	5'-4"	—
h3(E)	8	#5	7'-0"	—	v5(E)	10	#6	5'-11"	—
h4(E)	9	#6	23'-10"	—	v6(E)	176	#5	2'-0"	—
h5(E)	9	#6	20'-9"	—	Concrete Removal		Cu. Yd.	28.4	
s(E)	88	#5	6'-2"	—	Concrete Superstructure		Cu. Yd.	30.3	
					Reinforcement Bars, Epoxy Coated		Pound	4620	
					Mechanical Splice		Each	172	
					Bar Splicers		Each	15	

Bars indicated thus 3 x 2-#5 etc. indicates 3 lines of bars with 2 lengths per line.

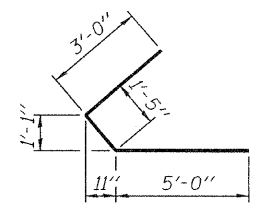
MIN. LAP
#5 Bars = 1'-8"
#6 Bars = 2'-2"



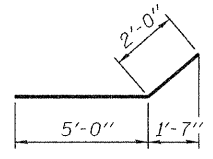
BAR b2(E)



BAR v6(E)



BAR h2(E)



BAR h3(E)

DESIGNED	AJB
CHECKED	VHV
DRAWN	Kyle M. Steffen
CHECKED	AJB VHV

APRIL 27, 2009
EXAMINED *Carl Hoyer*
ENGINEER OF STRUCTURAL SERVICES
PASSED *Ralph E. Anderson*
ENGINEER OF BRIDGES AND STRUCTURES

CONCRETE REPLACEMENT
DETAILS AT NORTH ABUTMENT
SN 082-0245 (N.B.)

SHEET NO. 8 10 SHEETS	F.A.I. RTE.	SECTION	COUNTY	TOTAL SHEETS	SHEET NO.
	255	-	ST. CLAIR	21	19
FED. ROAD DIST. NO.			ILLINOIS FED. AID PROJECT		
			CONTRACT NO. 76c67		