

WOOD POLE DETAIL

NOTES

ALL STAINLESS STEEL IS 304.L

THE ENGINEER SHALL IDENTIFY SOURCE OF EXISTING ELECTRICAL CIRCUIT FOR SHUT OFF PRIOR TO THE CONNECTION OF THE PROPOSED CIRCUIT.

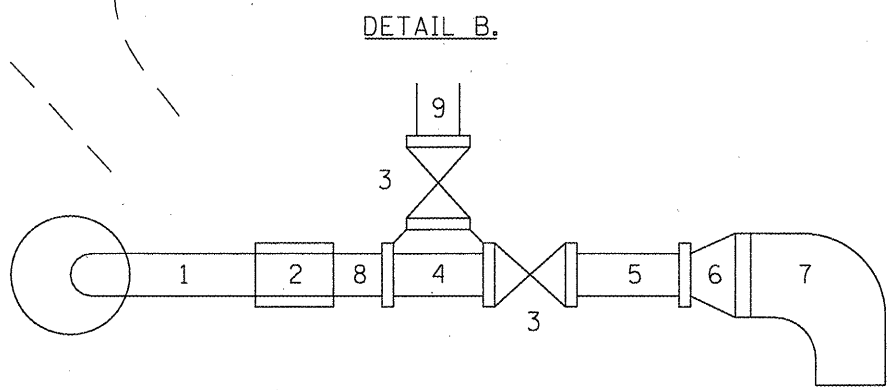
THE PROPOSED CONNECTION THE EXISTING CONTROLLER CABINET AND PROPOSED STAINLESS STEEL WELL HEAD SHALL BE APPROVED BY THE ENGINEER AND INCLUDED IN THE PRICE OF ELECTRICAL CABLE IN CONDUIT.

EXISTING GRADE: 397.90

**VERIFY PHASE ROTATION AND MATCH EXIST. CONNECTION**

LEGEND

1. REUSE EXISTING 8" S.S PIPE.
2. NEW 8" S.S. COUPLING
3. NEW 8" S.S. KNIFE VALVE
4. NEW 8" S.S. TEE, FLANGE
5. NEW 8" S.S. PIPE
6. REUSE EXISTING REDUCER
7. REUSE EXISTING S.S. 90° ELBOW
8. NEW 8" S.S. PIPE
9. NEW 8" HDPE PIPE



FILE NAME =	USER NAME = #USER#	DESIGNED -	REVISED -
#FILEL#		DRAWN -	REVISED -
	PLOT SCALE = #SCALE#	CHECKED -	REVISED -
	PLOT DATE = #DATE#	DATE -	REVISED -

STATE OF ILLINOIS  
DEPARTMENT OF TRANSPORTATION

SITE PLAN MISSOURI WELLS

SCALE: \_\_\_\_\_ SHEET NO. \_\_\_ OF \_\_\_ SHEETS STA. \_\_\_\_\_ TO STA. \_\_\_\_\_

Rev.

F.A. RTE.	SECTION	COUNTY	TOTAL SHEETS	SHEET NO.
*	**	SI. CLAIR	7	4
		CONTRACT NO. 16C71		
FED. ROAD DIST. NO. - ILLINOIS FED. AID PROJECT				