

STATE OF ILLINOIS
DEPARTMENT OF TRANSPORTATION
DIVISION OF HIGHWAYS

**PROPOSED
HIGHWAY PLANS**

FAP ROUTE 817 (IL ROUTE 4 / 15)
SECTION 421R-1

**RUNAROUND CONSTRUCTION
ST. CLAIR COUNTY**

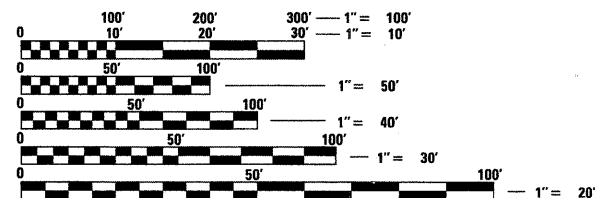
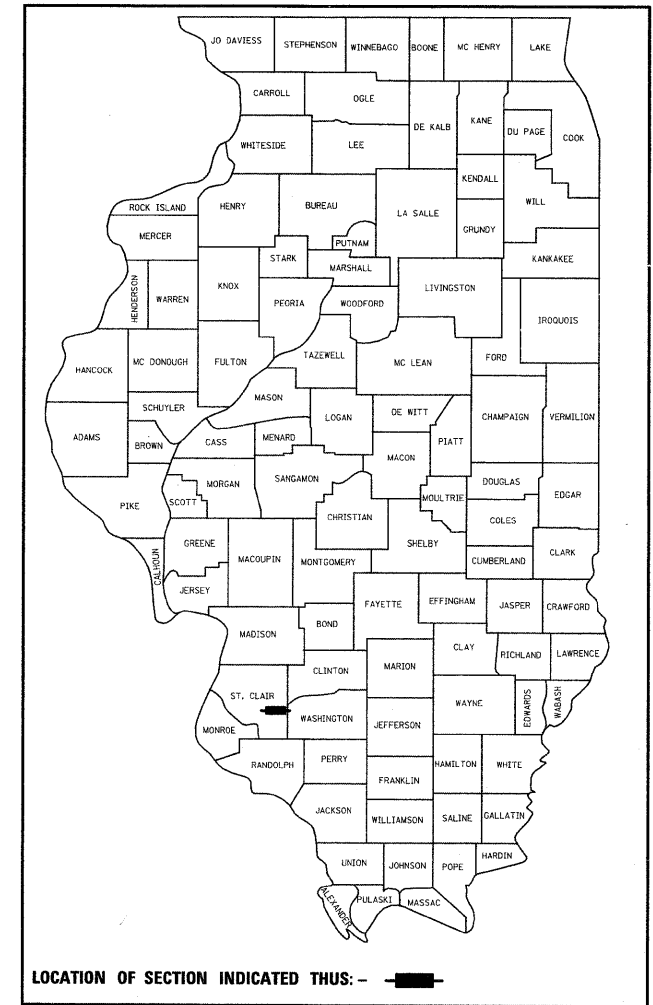
C-98-014-09

FOR INDEX OF SHEETS, SEE SHEET NO. 2

F.A.P. RTE.	SECTION	COUNTY	TOTAL SHEETS	SHEET NO.
817	421R-1	ST. CLAIR	29	1
FED. ROAD DIST. NO.	ILLINOIS	CONTRACT NO. 76C74		

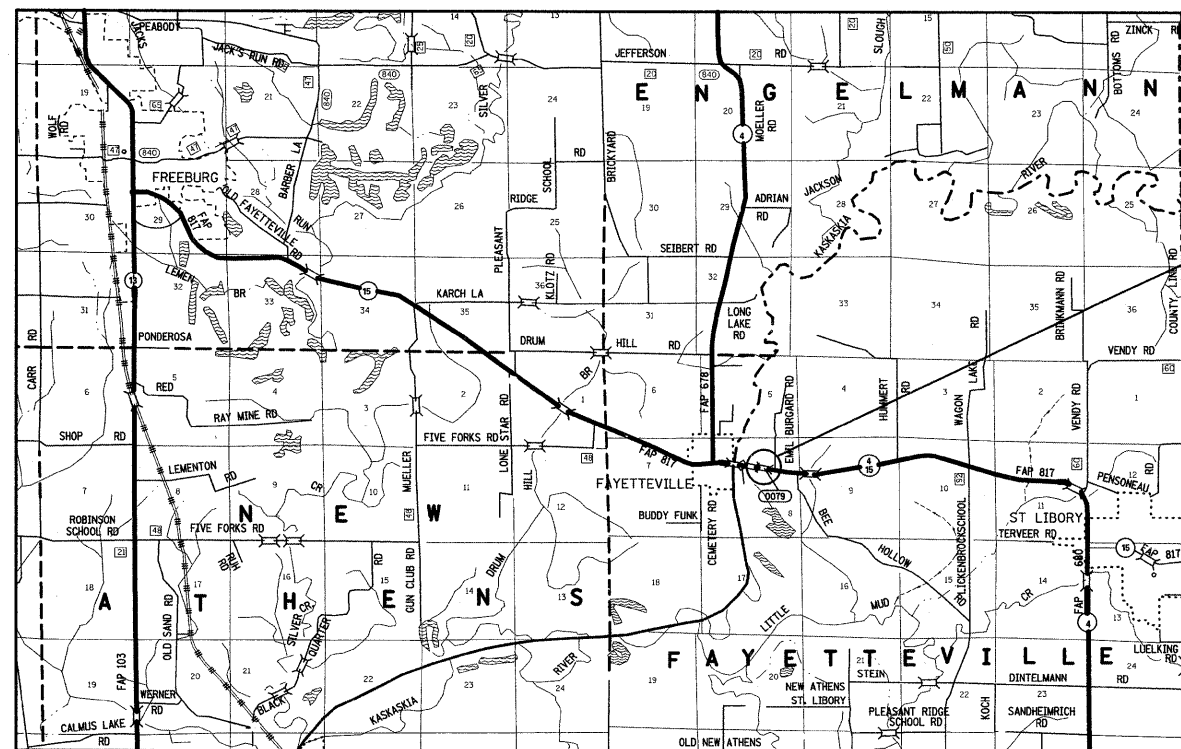
29+1=30

D-98-019-09



FULL SIZE PLANS HAVE BEEN PREPARED USING STANDARD ENGINEERING SCALES. REDUCED SIZED PLANS WILL NOT CONFORM TO STANDARD SCALES. IN MAKING MEASUREMENTS ON REDUCED PLANS, THE ABOVE SCALES MAY BE USED.

J.U.L.I.E.
JOINT UTILITY LOCATION INFORMATION FOR EXCAVATION
1-800-892-0123
OR 811

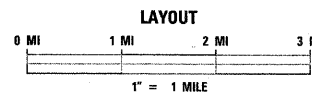


TEMPORARY RUNAROUND CONSTRUCTION
TO MAINTAIN TRAFFIC DURING STRUCTURE
REPLACEMENT PROJECT.
BEGIN STATION 0+00 = STATION 145+00 (IL 4)
END STATION 9+41.58 = STATION 154+00 (IL 4)

PROJECT ENGINEER: PATTI LeBEAU (618) 346-3179
PROJECT MANAGER: ARTHUR MUEHLFELD (618) 346-3209

CONTRACT NO. 76C74

DESIGN DESIGNATION
NA



LATITUDE = 38.37649
LONGITUDE = 89.78470

ADT = 5000 (2007)
ADT = 6500 (2029)
SU = 4.5%
MU = 3.5%

GROSS LENGTH = 0.18 MI
NET LENGTH = 0.18 MI

STATE OF ILLINOIS
DEPARTMENT OF TRANSPORTATION
DIVISION OF HIGHWAYS

SUBMITTED Dec 18, 2008
Mr. [Signature]
DEPUTY DIRECTOR OF HIGHWAYS, REGION 5 ENGINEER

January 30, 2009
Charles J. [Signature]
ENGINEER OF DESIGN AND ENVIRONMENT

January 30, 2009
Christine M. [Signature]
DIRECTOR OF HIGHWAYS, CHIEF ENGINEER

**PRINTED BY THE AUTHORITY
OF THE STATE OF ILLINOIS**