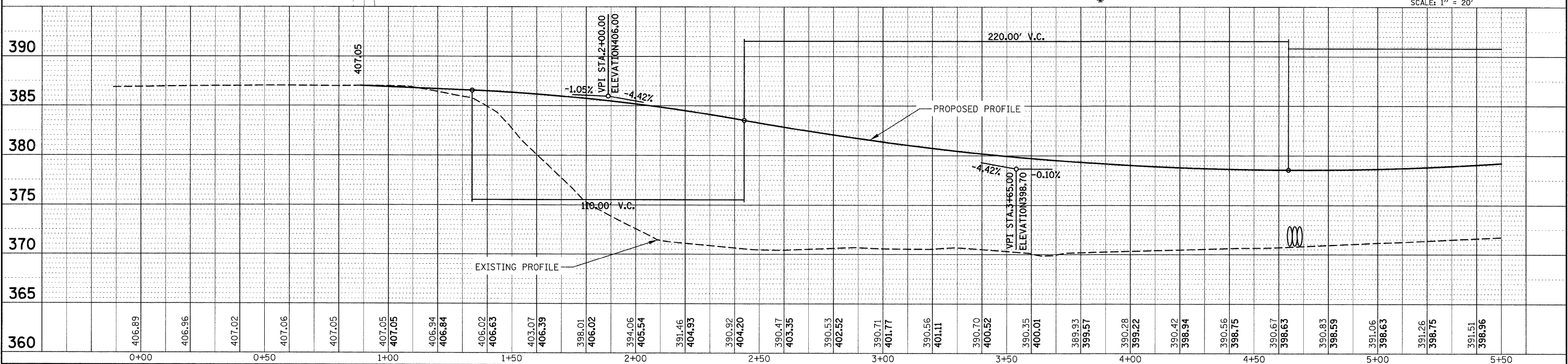
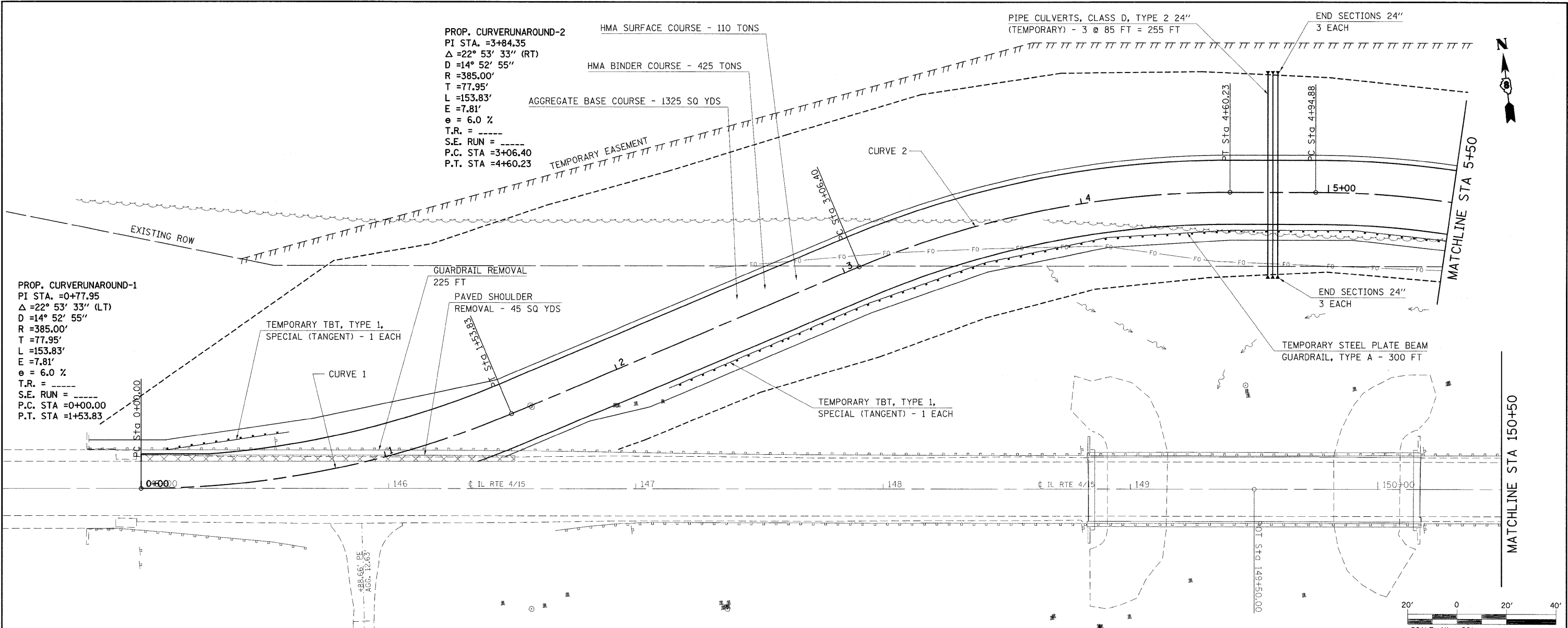


BY	DATE
DESIGNED	
PLANNED	
NOTED	
CHECKED	
FILE NAME	

BY	DATE
DESIGNED	
PLANNED	
NOTED	
CHECKED	
FILE NAME	

PROP. CURVERUNAROUND-2  
 PI STA. =3+84.35  
 $\Delta = 22^\circ 53' 33''$  (RT)  
 $D = 14^\circ 52' 55''$   
 $R = 385.00'$   
 $T = 77.95'$   
 $L = 153.83'$   
 $E = 7.81'$   
 $e = 6.0\%$   
 $T.R. = \text{-----}$   
 $S.E. RUN = \text{-----}$   
 $P.C. STA = 3+06.40$   
 $P.T. STA = 4+60.23$

PROP. CURVERUNAROUND-1  
 PI STA. =0+77.95  
 $\Delta = 22^\circ 53' 33''$  (LT)  
 $D = 14^\circ 52' 55''$   
 $R = 385.00'$   
 $T = 77.95'$   
 $L = 153.83'$   
 $E = 7.81'$   
 $e = 6.0\%$   
 $T.R. = \text{-----}$   
 $S.E. RUN = \text{-----}$   
 $P.C. STA = 0+00.00$   
 $P.T. STA = 1+53.83$



FILE NAME =	USER NAME = owerbj	DESIGNED -	REVISED -	<b>STATE OF ILLINOIS DEPARTMENT OF TRANSPORTATION</b>	<b>PHASE I - RUNAROUND CONSTRUCTION</b>	F.A.P. RTE.	SECTION	COUNTY	TOTAL SHEETS	SHEET NO.
PLT SCALE = 28.0000" / IN.	DRAWN -	REVISED -	817			421R-1	ST. CLAIR	29	6	
PLT DATE = 12/19/2008	CHECKED -	REVISED -	CONTRACT NO. 76C74							
	DATE -	REVISED -	ILLINOIS FED. AID PROJECT							