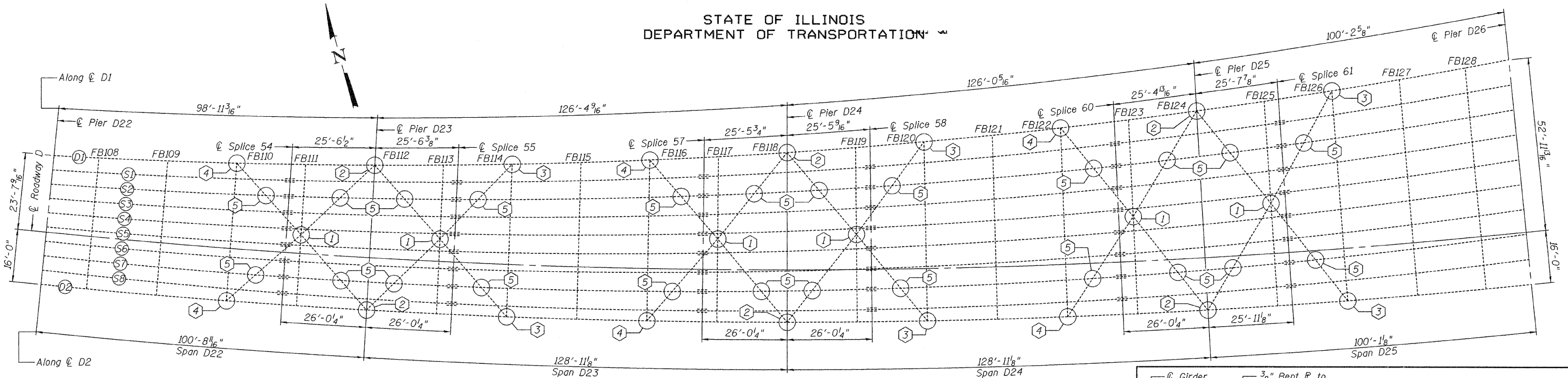


STATE OF ILLINOIS  
DEPARTMENT OF TRANSPORTATION



**FRAMING PLAN**

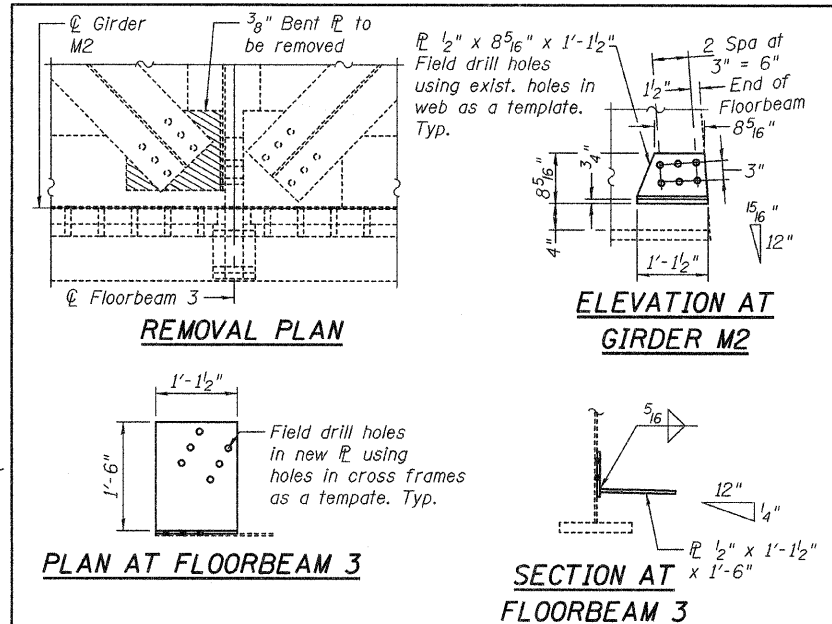
- ① Remove and Replace welded gusset P (6 Locations)
- ② Remove and Replace bolted bent P (6 Locations)
- ③ Remove and Replace welded gusset P (6 Locations)
- ④ Remove and Replace bolted bent P (6 Locations)
- ⑤ Install Vertical tie rods between cross-bracing and stringer (24 Locations as shown above) See Table for additional locations.

**GENERAL NOTES**

All structural steel shall conform to AASHTO Classification M-270 Gr. 36, unless otherwise noted.  
Fasteners shall be high strength bolts. Bolts 7/8"φ, open holes 15/16"φ, unless otherwise noted.  
Plan dimensions and details relative to existing plans are subject to nominal construction variations. The Contractor shall field verify existing dimensions and details affecting new construction and make necessary approved adjustments prior to construction or ordering of materials. Such variations shall not be cause for additional compensation for a change in scope of the work, however, the Contractor will be paid for the quantity actually furnished at the unit price bid for the work.  
The existing structural steel coating contains lead. The Contractor shall take appropriate precautions to deal with the presence of lead on this project.  
Existing structural steel that will be in contact with new structural steel shall be cleaned and painted prior to erection as required by the Special Provision "Cleaning and Painting Contact Surface Areas of Existing Steel Structures".  
All structural steel shall be shop painted with the inorganic zinc rich primer per AASHTO M300, Type 1. Cost included with Furnishing and Erecting Structural Steel.

**ADDITIONAL LOCATIONS FOR REPAIR 5**

Structure #	Spans	Locations	Comments
Roadway A 082-0141	A21 - A24	14	RR span A26 and Traffic control at spans A26, A27 & A28 Shown on Plan View Above
	A25 - A28	56	
Roadway D 082-0144	D22 - D25	24	RR Span D30 and Traffic control at span D31
	D28 - D32	72	
Roadway F 082-0204	F7 - F9	16	Traffic control at span S5
	S1 - S3	28	
	S4 - S7	28	
	S8 - S10	28	
	S11 - S15	56	
	S16 - S18	32	
Ramp S 082-0142	S19 - S21	16	Traffic control at spans S12, S14 & S15 Traffic control at span S17 Traffic control at span S20
	M4 - M6	32	
	M7 - M9	32	
	M10 - M12	32	
Ramp M 082-0145	M13, M14 & A5M	26	Traffic control at spans M8 & M9
	N1 - N4	44	
Ramp N 082-0202	O1 - O3	36	RR at span N1 RR at span O2
	O4 - O6	14	
Ramp O 082-0201	O8 - O10	32	Traffic control at span P5 RR at span P7
	P4 - P6	28	
Ramp P 082-0203	P7 - P9	26	
	P10 - P13	26	
	Total	698	



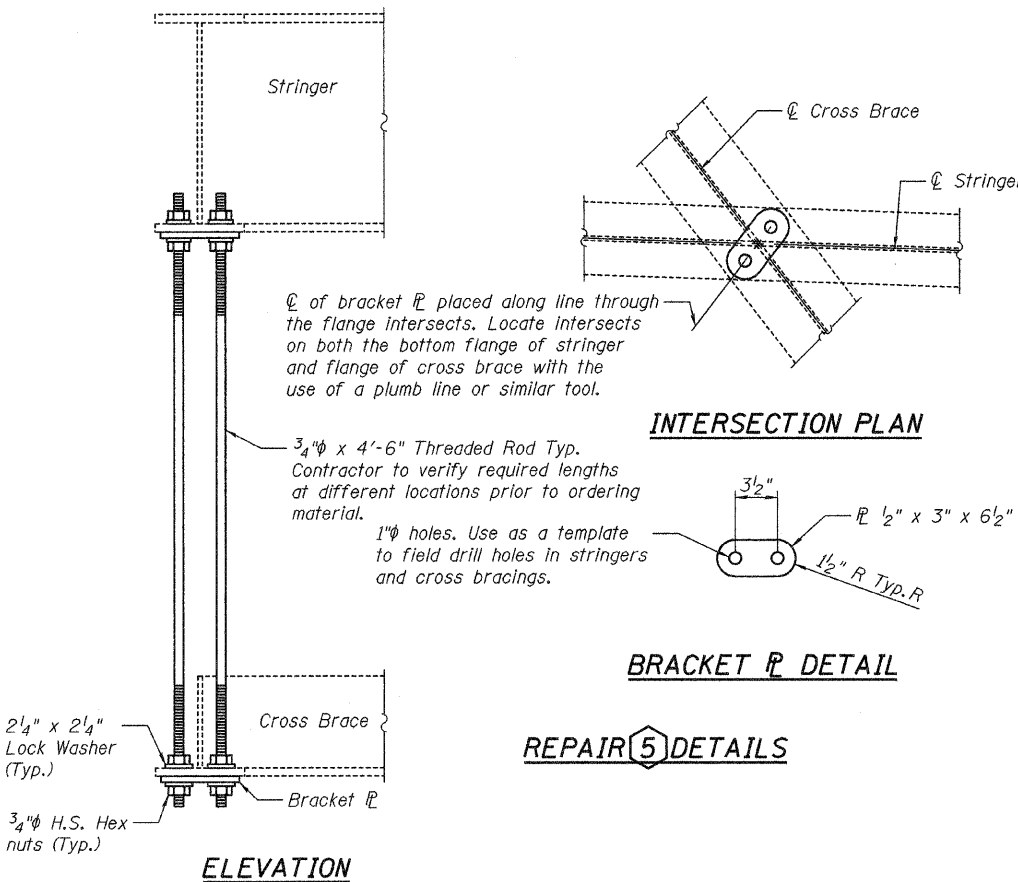
**SN 082-0145 RAMP M  
GIRDER M2 FLOORBEAM 3  
SOUTH END WEST SIDE REPAIR**

**TOTAL BILL OF MATERIAL**

ITEM	UNIT	QUANTITY
Structural Steel Removal	Pound	1,290
Furnishing and Erecting Structural Steel	Pound	16,160

**PLAN AND REMOVAL DETAILS  
SN 082-0144**

SHEET NO.	F.A.I. RTE.	SECTION	COUNTY	TOTAL SHEETS	SHEET NO.
1	ΔΔ	82D-I	St. Clair	4	3
2 SHEETS		CONTRACT NO. 76C96			
		FED. ROAD DIST. NO.	ILLINOIS FED. AID PROJECT		



**REPAIR ⑤ DETAILS**

DESIGNED Adrian T. Holloway  
CHECKED Victor H. Veliz  
DRAWN [Signature]  
CHECKED VHV AJH

May 7, 2009  
EXAMINED [Signature]  
PASSED [Signature]  
ENGINEER OF STRUCTURAL SERVICES  
ENGINEER OF BRIDGES AND STRUCTURES



Expires: November 30, 2010