

F.A.I. RTE.	SECTION	COUNTY	TOTAL SHEETS	SHEET NO.
64	82-71-4	ST. CLAIR	7	1
FED. ROAD DIST. NO.		ILLINOIS	CONTRACT NO. 76D03	

STANDARDS

- 701101-02
- 701106-02
- 701451
- 701901-01
- 720001-01
- 720011-01

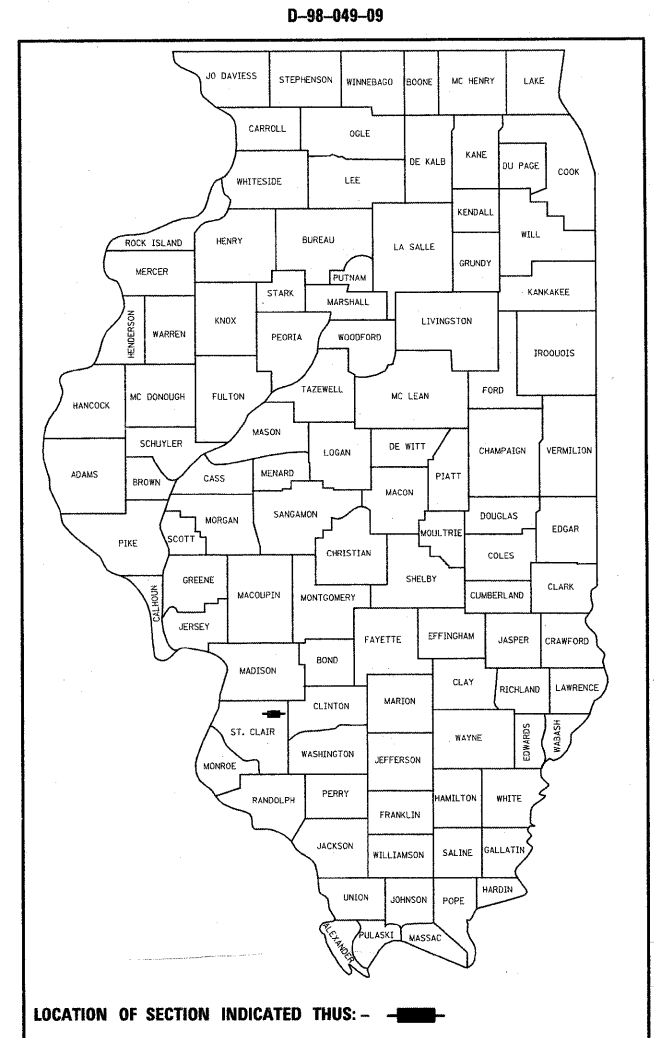
INDEX OF SHEETS

- 1 COVER SHEET
- 2 SUMMARY OF QUANTITIES AND NOTES
- 3 SITE LAYOUT
- 4-7 STRUCTURAL PLANS

STATE OF ILLINOIS
DEPARTMENT OF TRANSPORTATION
DIVISION OF HIGHWAYS
**PROPOSED
HIGHWAY PLANS**

FAI ROUTE 64
SECTION 82-71-4

ST. CLAIR COUNTY
O'FALLON WEIGH STATION
REPLACE EXISTING STATIC SCALE
C-98-049-09



TRAFFIC DATA (EB ONLY):

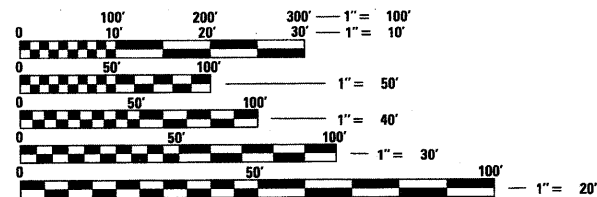
2007 ADT = 23900 (ACTUAL)
2009 ADT = 24400 (ESTIMATED)
SU = 3.1%
MU = 14.6%

STATE OF ILLINOIS
DEPARTMENT OF TRANSPORTATION
DIVISION OF HIGHWAYS

SUBMITTED March 23, 2009
My C. Komi
DEPUTY DIRECTOR OF HIGHWAYS, REGION 5 ENGINEER

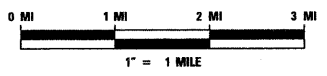
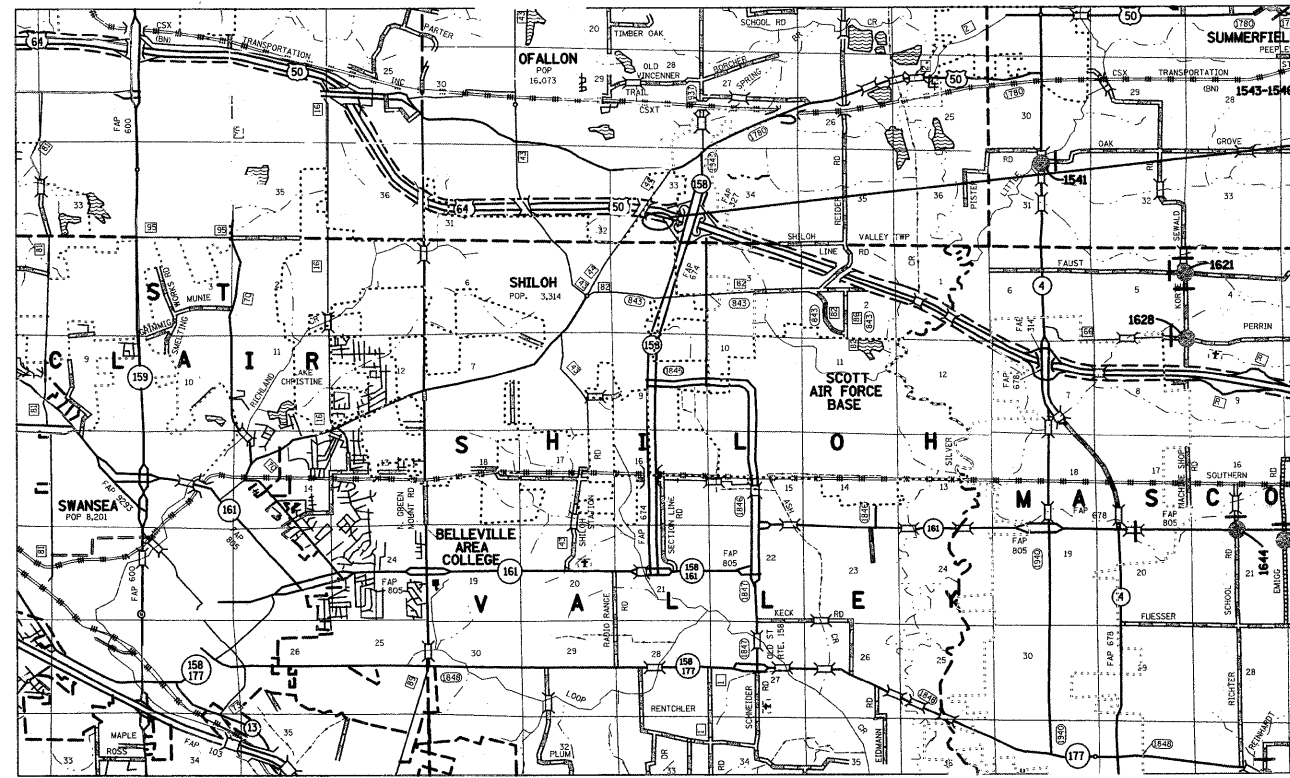
May 8, 2009
Charles G. Ingersoll, PE
ENGINEER OF DESIGN AND ENVIRONMENT

May 8, 2009
Christine M. Reed, PE
DIRECTOR OF HIGHWAYS, CHIEF ENGINEER



FULL SIZE PLANS HAVE BEEN PREPARED USING STANDARD ENGINEERING SCALES. REDUCED SIZED PLANS WILL NOT CONFORM TO STANDARD SCALES. IN MAKING MEASUREMENTS ON REDUCED PLANS, THE ABOVE SCALES MAY BE USED.

J.U.L.I.E.
JOINT UTILITY LOCATION INFORMATION FOR EXCAVATION
1-800-892-0123
OR 811



PROJECT ENGINEER PATTI LEBEAU (618) 346-3179
PROJECT MANAGER BHARAT PATEL (618) 346-3190

CONTRACT NO. 76D03

**PRINTED BY THE AUTHORITY
OF THE STATE OF ILLINOIS**

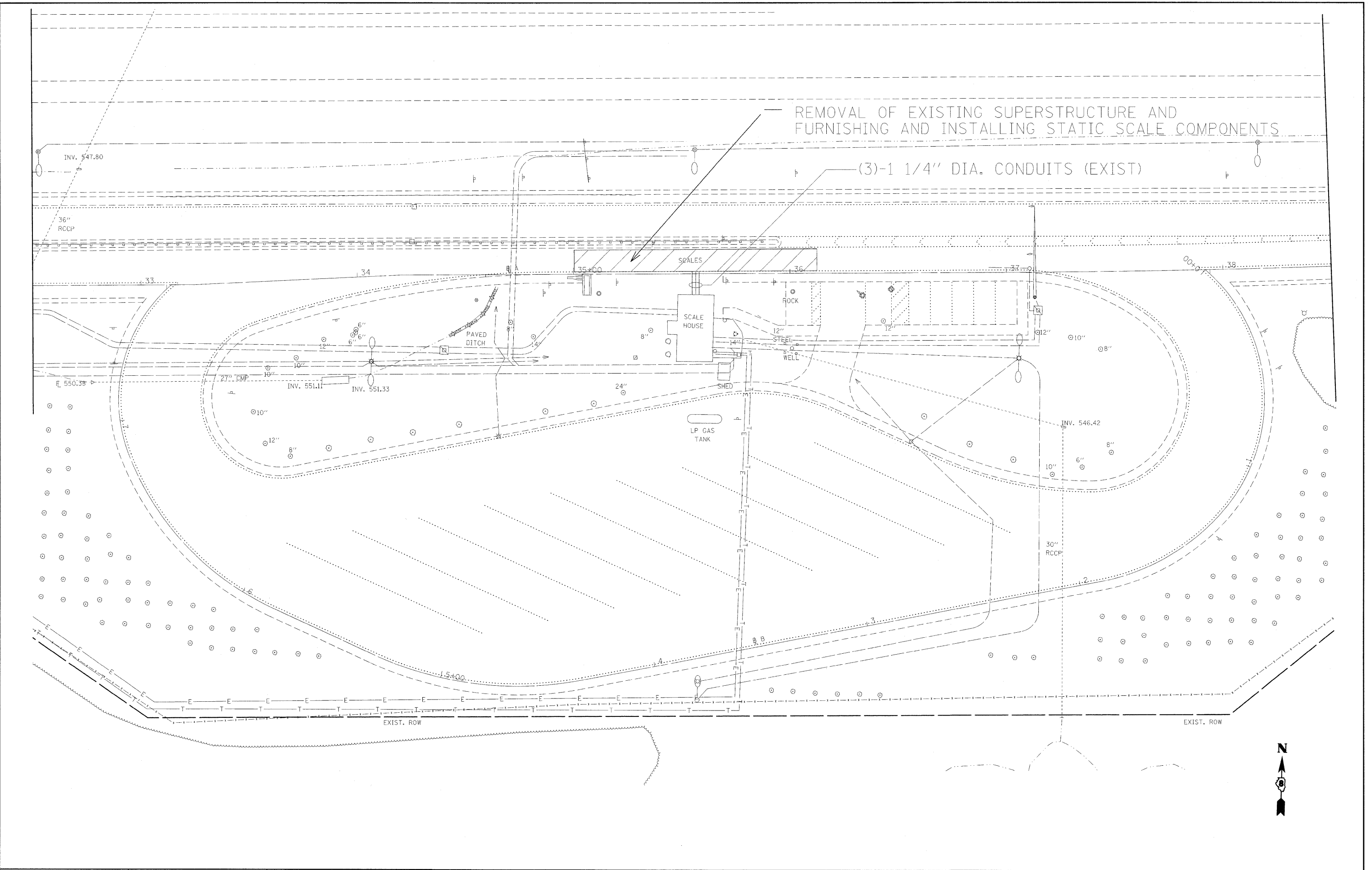
SUMMARY OF QUANTITIES

SUMMARY OF QUANTITIES			100% STATE	CONSTRUCTION TYPE CODE		
CODE NO	ITEM	UNIT	TOTAL QUANTITIES	Y222		
50101500	REMOVAL OF EXISTING SUPERSTRUCTURES	EACH	1	1		
67000400	ENGINEER'S FIELD OFFICE, TYPE A	CAL MO	4	4		
67100100	MOBILIZATION	L SUM	1	1		
70100820	TRAFFIC CONTROL AND PROTECTION, STANDARD 701451	L SUM	1	1		
Z0025710	FURNISHING AND INSTALLING STATIC SCALE COMPONENTS	L SUM	1	1		

PLAN NOTES:

THE LIGHTED SIGN "CLOSED" SHALL BE TURNED ON DURING THE WEIGH STATION SHUT DOWN AS DIRECTED BY THE ENGINEER.

FILE NAME =	USER NAME = patelebm	DESIGNED -	REVISED -	STATE OF ILLINOIS DEPARTMENT OF TRANSPORTATION	SUMMARY OF QUANTITIES AND PLAN NOTES	F.A.I. RTE.	SECTION	COUNTY	TOTAL SHEETS	SHEET NO.	
c:\pwork\PWIDOT\PALEBMA\0123893\d878	d03-shr-tspln.dgn	DRAWN -	REVISED -			64	82-TI-4	ST. CLAIR	7	2	
	PLOT SCALE = 50.0000' / IN.	CHECKED -	REVISED -			CONTRACT NO. 76D03					
	PLOT DATE = 3/23/2009	DATE -	REVISED -			SCALE:	SHEET NO. 2 OF 7 SHEETS	STA.	TO STA.	FED. ROAD DIST. NO.	ILLINOIS FED. AID PROJECT



FILE NAME =
 c:\pw_work\PWIDOT\PELBM\00123893\d07\d03-shr-tsp1an.dgn

USER NAME = pelbmb
 DESIGNED -
 DRAWN -
 PLOT SCALE = 20,0000' / IN.
 CHECKED -
 PLOT DATE = 3/23/2009
 DATE -

DESIGNED -
 DRAWN -
 CHECKED -
 DATE -

REVISED -
 REVISED -
 REVISED -
 REVISED -

**STATE OF ILLINOIS
 DEPARTMENT OF TRANSPORTATION**

SITE LAYOUT

SCALE: NONE SHEET NO. 3 OF 7 SHEETS STA. TO STA.

F.A.I. RTE. 64	SECTION 82-71-4	COUNTY ST. CLAIR	TOTAL SHEETS 7	SHEET NO. 3
CONTRACT NO. 76D03				
FED. ROAD DIST. NO. ILLINOIS FED. AID PROJECT				



Existing Structure: Weigh Station at O'Fallon was originally built in 1972 as F.A.I. Route 64, Section 82-7I-4, St.Clair County. The existing weigh scales shall be removed and replaced. See Scope of Work. Traffic will be detoured.

STATE OF ILLINOIS
DEPARTMENT OF TRANSPORTATION

GENERAL NOTES

Reinforcement bars shall conform to the requirements of ASTM A 706 Gr 60. See Special Provisions.
Plan dimensions and details relative to existing plans are subject to nominal construction variations. The Contractor shall field verify existing dimensions and details affecting new construction and make necessary approved adjustments prior to construction or ordering of materials. Such variations shall not be cause for additional compensation for a change in scope of the work, however, the Contractor will be paid for the quantity actually furnished at the unit price bid for the work.
The existing structural steel coating contains lead. The Contractor shall take appropriate precautions to deal with the presence of lead on this project.
The SSPC QP-1 and QP-2 Contractor Certifications will not be required for this Contract.

INDEX OF SHEETS

1. General Data
2. General Plan and Elevation
3. Superstructure Removal Details
4. Proposed Static Scale Component Details

SCOPE OF WORK

1. Remove existing concrete deck, structural steel beams, and scales.
2. Install new Weigh-Tronix Scales.

TOTAL BILL OF MATERIAL

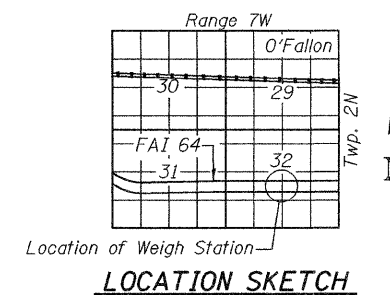
ITEM	UNIT	SUPER	SUB	TOTAL
Removal of Existing Superstructures	Each	1		1
Furnishing and Installing Static Scale Components	L.Sum	1.0		1.0

LOADING HS20-44
No future wearing surface allowed
DESIGN SPECIFICATIONS
2002 AASHTO

DESIGN STRESSES

NEW CONSTRUCTION
 $f'_c = 3,500$ psi (Deck and Pit)
 $f_y = 60,000$ psi (Reinforcement)
 $f_y = 36,000$ psi (Structural Steel AASHTO M270 Grade 36)

FIELD UNITS (WORKING STRESSES)
 $f_c = 1,000$ psi (Pit)
 $f_s = 20,000$ psi (Reinforcement)
 $f_s = 20,000$ psi (Structural Steel)



GENERAL DATA
STA. 843+49.94
O'FALLON WEIGH STATION

DESIGNED	<i>Patrick M. Polone</i>
CHECKED	<i>Jay D. Edwards</i>
DRAWN	BECKY M. LEACH
CHECKED	<i>mp</i>

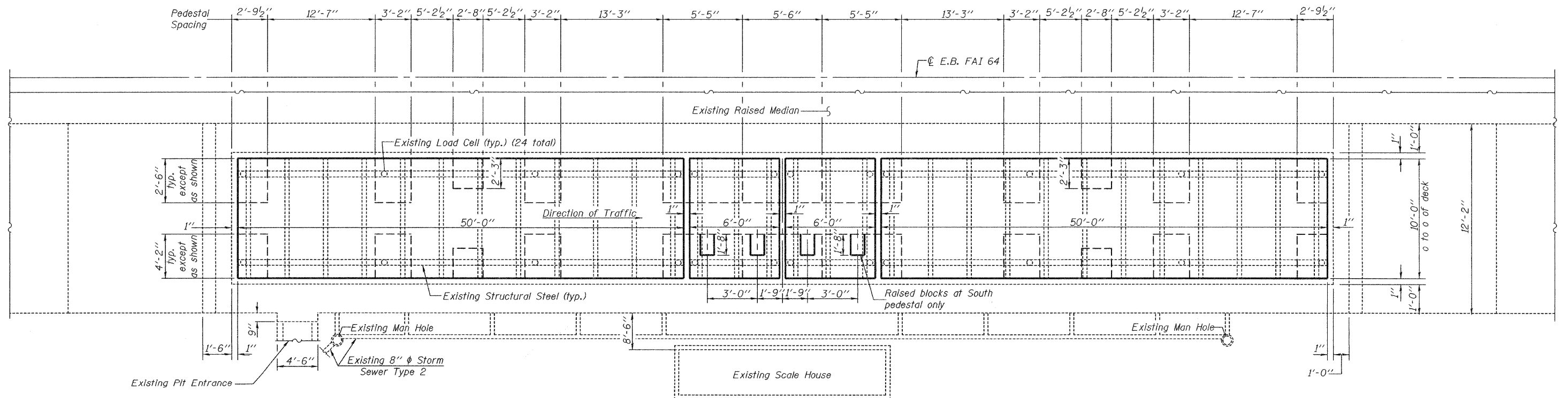
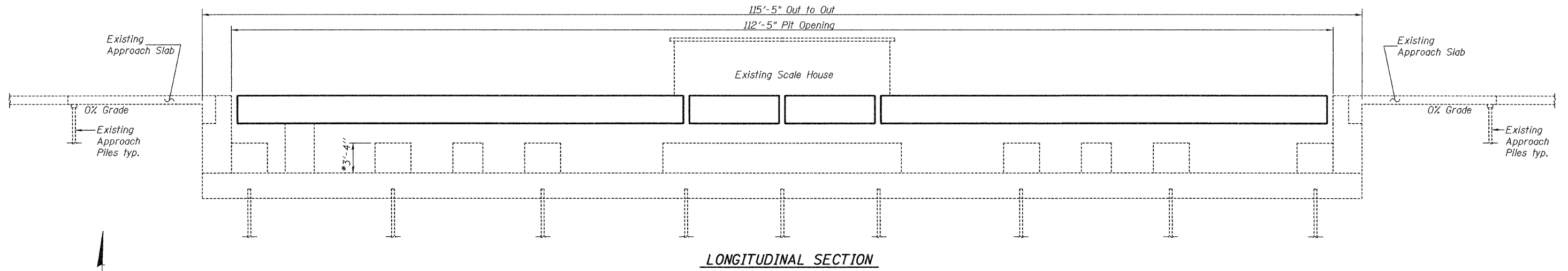
April 21, 2009
 EXAMINED *Thomas J. Delle*
 ENGINEER OF BRIDGE DESIGN
 PASSED *Patrick E. Polone*
 ENGINEER OF BRIDGES AND STRUCTURES



EXPIRES 11-30-2010

SHEET NO. 1 4 SHEETS	F.A.I. RTE.	SECTION	COUNTY	TOTAL SHEETS	SHEET NO.
	64	82-7I-4	ST. CLAIR	7	4
FED. ROAD DIST. NO.			ILLINOIS FED. AID PROJECT		
			CONTRACT NO. 76D03		

STATE OF ILLINOIS
DEPARTMENT OF TRANSPORTATION



GENERAL PLAN AND ELEVATION
STA. 843+49.94

DESIGNED Patrick M. Petrone
CHECKED Jay D. Edwards
DRAWN BECKY M. LEACH
CHECKED PMP/JDE

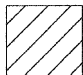
APRIL 21, 2009
EXAMINED *Thomas J. Domagala*
PASSED *Ralph E. Anderson*
ENGINEER OF BRIDGE DESIGN
ENGINEER OF BRIDGES AND STRUCTURES

*Height of Pedestals shall be field verified by Contractor prior to ordering of new scales.

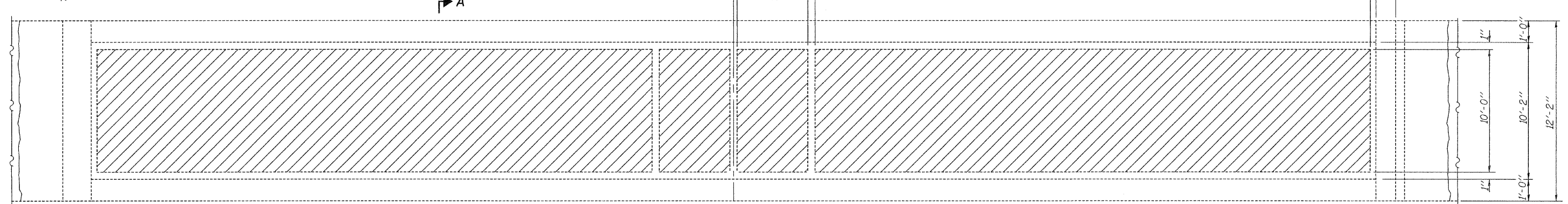
SHEET NO. 2 4 SHEETS	F.A.I. RTE. 64	SECTION 82-71-4	COUNTY ST. CLAIR	TOTAL SHEETS 7	SHEET NO. 5
	CONTRACT NO. 76D03				
FED. ROAD DIST. NO.		ILLINOIS FED. AID PROJECT			

STATE OF ILLINOIS
DEPARTMENT OF TRANSPORTATION

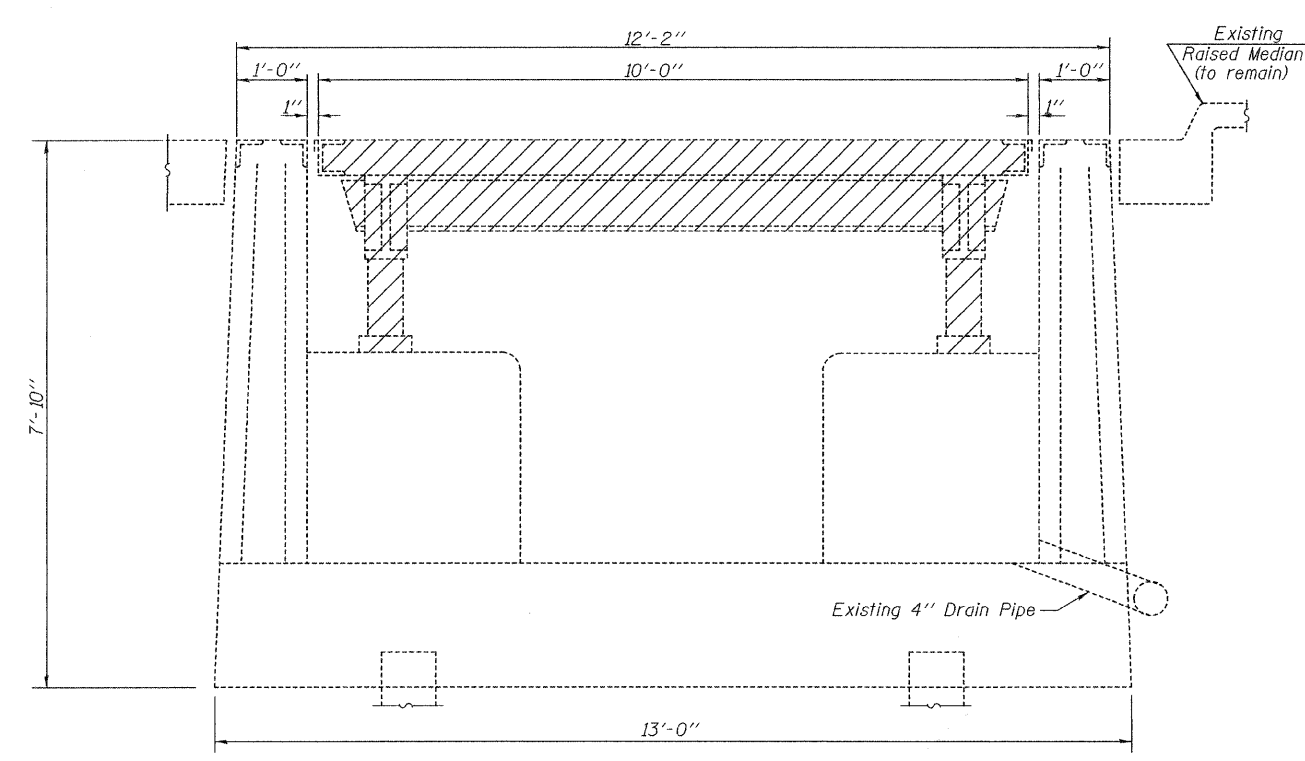


 Indicates limits to be removed as
Removal of Existing Superstructure

Symm. about C (except
for concrete pit entrance)
6'-0" end to end of slab
50'-0" end to end of slab
1'-0"



PLAN



SECTION A-A

BILL OF MATERIAL

Item	Unit	Total
Removal of Existing Superstructures	Each	1.0

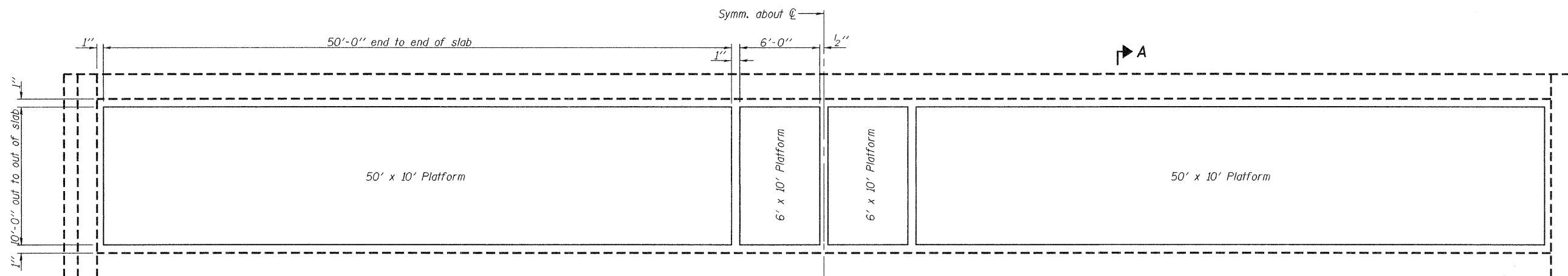
SUPERSTRUCTURE REMOVAL DETAILS
STA. 843+49.94

DESIGNED Patrick M. Petrone
CHECKED Jay D. Edwards
DRAWN BECKY M. LEACH
CHECKED PMP/JDE

APRIL 21, 2009
EXAMINED *Thomas J. Domagalaki*
PASSED *Ralph E. Anderson*
ENGINEER OF BRIDGES AND STRUCTURES

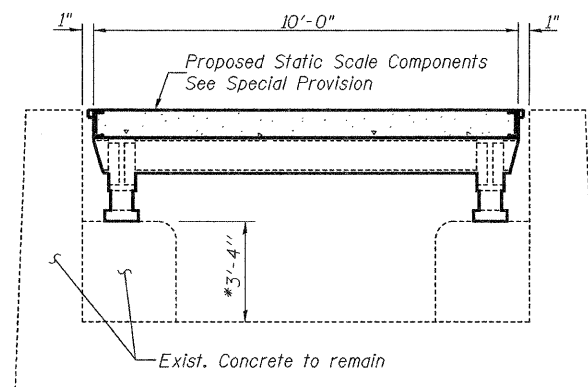
SHEET NO. 3 4 SHEETS	F.A.I. RTE.	SECTION	COUNTY	TOTAL SHEETS	SHEET NO.
	64	82-71-4	ST. CLAIR	7	6
FED. ROAD DIST. NO.			ILLINOIS FED. AID PROJECT		
CONTRACT NO. 76D03					

STATE OF ILLINOIS
DEPARTMENT OF TRANSPORTATION



PLAN
STATIC SCALE COMPONENTS

(Pit entrance not shown)



SECTION A-A

*Height of pedestals shall be field verified by Contractor prior to ordering of new scales.

BILL OF MATERIAL

Furnishing and Installing Static Scale Components.	L. Sum	1
--	--------	---

STATIC SCALE COMPONENT DETAILS
STA. 843+49.94

DESIGNED Patrick M. Petrone
CHECKED Jay D. Edwards
DRAWN BECKY M. LEACH
CHECKED PMP/JDE

APRIL 21, 2009
EXAMINED <i>Thomas J. Domagalaki</i> ENGINEER OF BRIDGE DESIGN
PASSED <i>Ralph E. Anderson</i> ENGINEER OF BRIDGES AND STRUCTURES

SHEET NO. 4 4 SHEETS	F.A.I. RTE. 64	SECTION 82-71-4	COUNTY ST. CLAIR	TOTAL SHEETS 7	SHEET NO. 7
	CONTRACT NO. 76D03				
FED. ROAD DIST. NO.		ILLINOIS	FED. AID PROJECT		