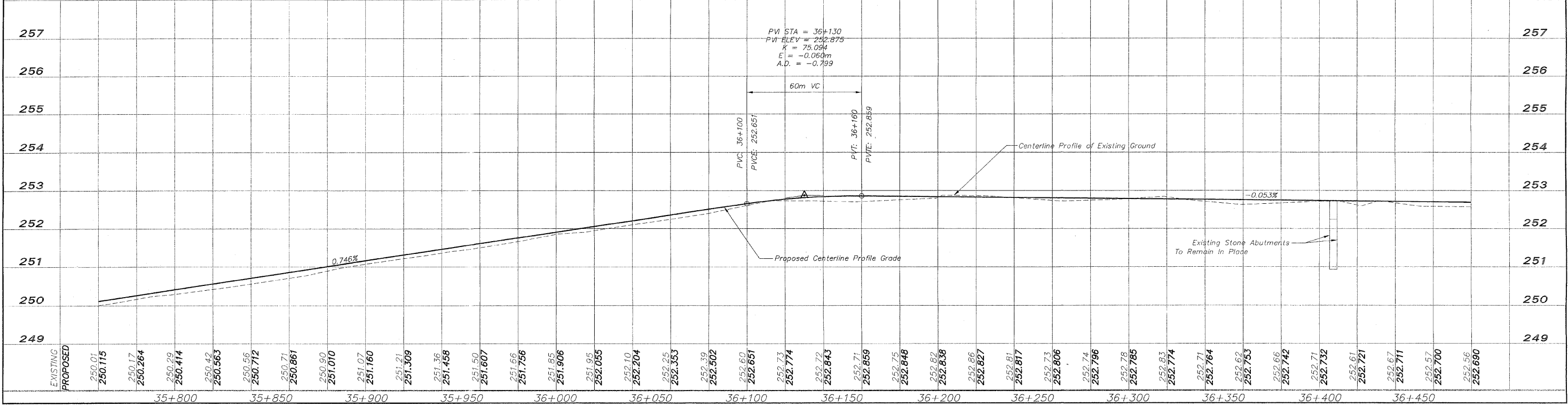
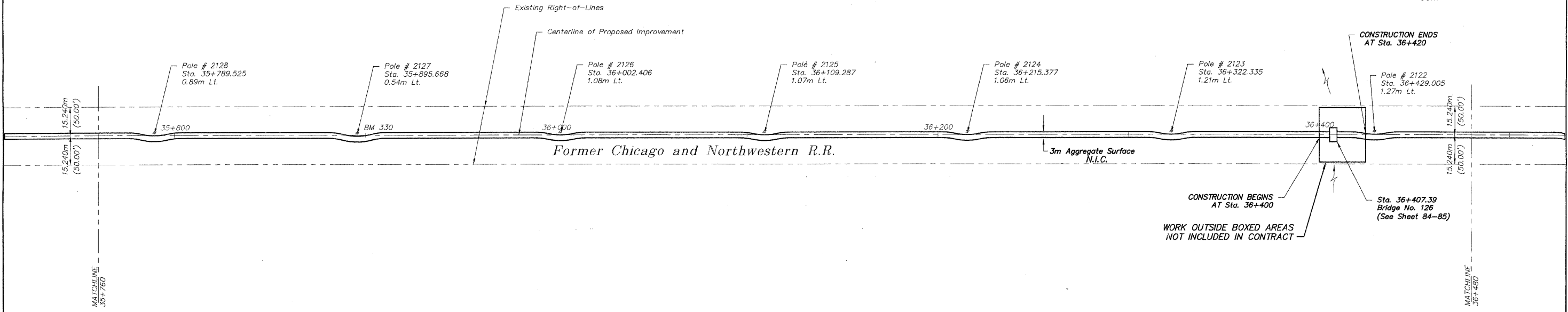
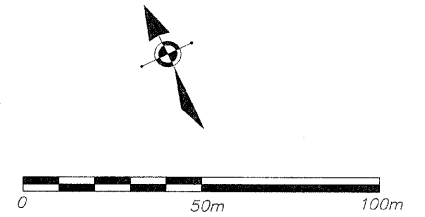


BM 330 RR Spike in Power Pole # 2127
Sta. 35+895.660 1.17m LT.
Elev. 251.854

N.I.C. = NOT IN CONTRACT



REVISIONS		
NO.	ITEM	DATE
2	REVIEW COMMENTS	1/22/09

NO.	ITEM	DATE
2	REVIEW COMMENTS	1/22/09

PLOTTING SCALE: 1 : 1
DRAWN BY: REK
CHECKED BY:
DATE: DECEMBER, 2008

McClure
Engineering Associates, Inc.
7282 Argus Drive Rockford, Illinois 61107-5937
(815) 398-2332 FAX (815) 398-2496
Design Firm License: Illinois 184-000816
Copyright 2006 By McClure Engineering Associates, Inc.

PLAN AND PROFILE 35+760-36+480
PECATONICA PRAIRIE PATH Contract 85 443
WINNEBAGO COUNTY HIGHWAY DEPARTMENT SECTION 94-00267-00-BT
FILE NAME: G:\surveys\PECPATH\1ST RELEASE\98-037 pp35+760-36+480.dwg JOB NUMBER: 04-28-98-037

SHEET NO.
10
OF
98

G:\surveys\PECPATH\1ST RELEASE\98-037 pp35+760-36+480.dwg - layout1, 3/4/2009 11:05:16 AM, 1:1, REK