

BM R-228 Spike set 0.61m South of Fence
Sta. 36+544.938, 1.862m RT
Elev. 253.285

Centerline Curve Data
P.I. = 36+697.875
 $\Delta = 29^{\circ}27'18''$
R = 30.000m (98.43')
T = 7.872m (25.83')
L = 15.396m (50.51')
E = 1.016m (3.33')
P.C. = 36+690.003
P.R.C. = 36+705.399

Centerline Curve Data
P.I. = 36+713.271
 $\Delta = 29^{\circ}24'18''$
R = 30.000m (98.43')
T = 7.872m (25.83')
L = 15.396m (50.51')
E = 1.016m (3.33')
P.C. = 36+690.003
P.R.C. = 36+705.399

Centerline Curve Data
P.I. = 36+871.417
 $\Delta = 12^{\circ}59'40''$
R = 30.000m (98.43')
T = 3.417m (11.21')
L = 6.804m (22.32')
E = 0.194m (0.64')
P.C. = 36+883.536
P.T. = 36+890.340

Centerline Curve Data
P.I. = 36+886.953
R = 30.000m (98.43')
T = 3.417m (11.21')
L = 6.804m (22.32')
E = 0.194m (0.64')
P.C. = 36+883.536
P.T. = 36+890.340

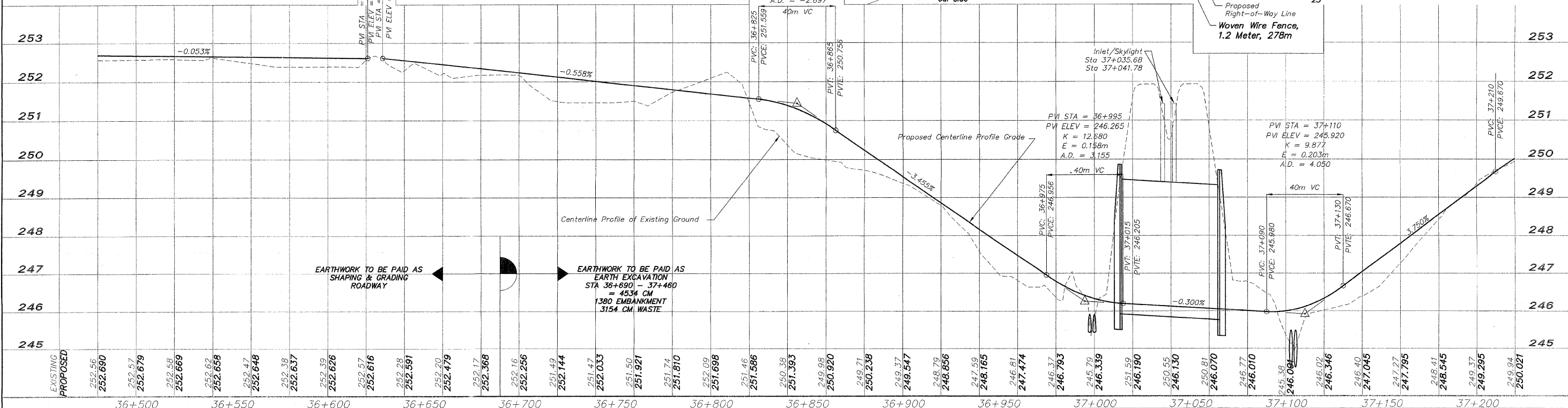
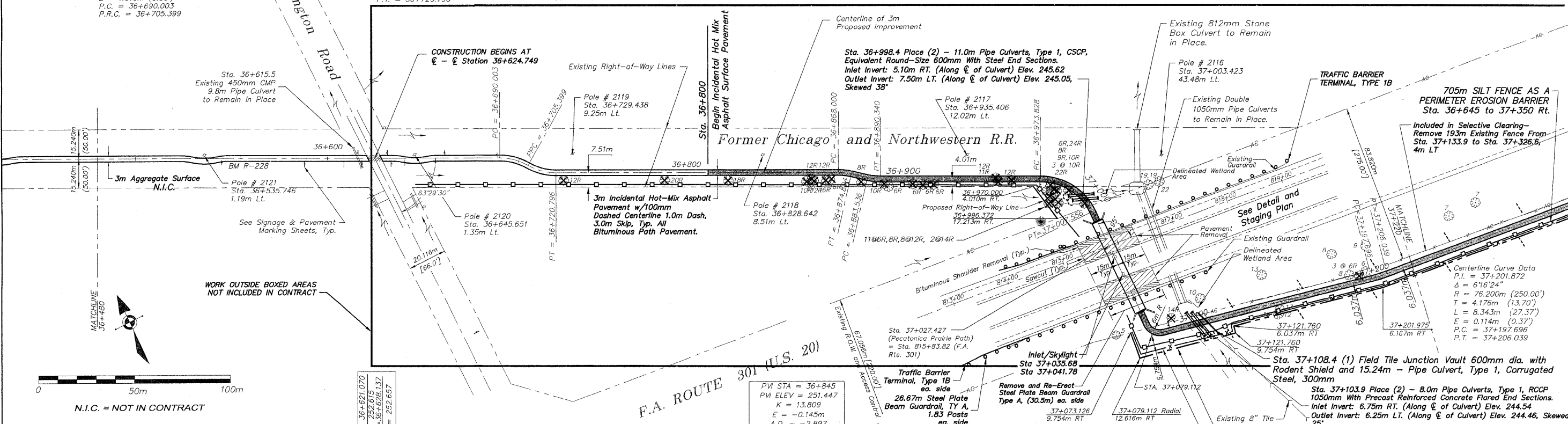
Centerline Curve Data
P.I. = 36+992.726
 $\Delta = 64^{\circ}24'54''$
R = 30.000m (98.43')
T = 18.898m (62.00')
L = 33.728m (110.66')
E = 5.456m (17.90')
P.C. = 36+973.828
P.T. = 37+007.556

Place 48.77m Corrugated Steel Structural Plate Pipe Arch
With Concrete Headwalls North Invert : Sta. 37+014.342
Elev. 245.916* South Invert : Sta. 37+063.112 Elev.
245.770* *Elevations are for Inverts on the Structural Plate
Pipe Arch not for the Finished Path Elevation.

EROSION CONTROL

- - INLET PROTECTION
- CULVERT PIPE PROTECTION
- - - DITCH CHECK
- - SILT FENCE

Construction in U.S. 20 Roadway Will Be Staged
And Traffic Maintained With The Use Of
Cross-overs



NO.	REVIEW COMMENTS	DATE
2		1/22/09

REVISIONS		
NO.	ITEM	DATE
2		1/22/09

PLOTTING SCALE: 1 : 1
DRAWN BY: REK
CHECKED BY:
DATE: DECEMBER, 2008

McClure
Engineering Associates, Inc.
7282 Argus Drive Rockford, Illinois 61107-5837
(815) 398-2332 FAX (815) 398-2496
Design Firm License: Illinois 184-000816
Copyright 2006 By McClure Engineering Associates, Inc.

PLAN AND PROFILE 36+480/37+220
PECATONICA PRAIRIE PATH Contract 85443
WINNEBAGO COUNTY HIGHWAY DEPARTMENT SECTION 94-00267-00-BT
FILE NAME: G:\surveys\PEC\PATH\1ST RELEASE\98-037 pp36+480-37+220.dwg JOB NUMBER: 04-28-98-037

SHEET NO.
11
OF
98