

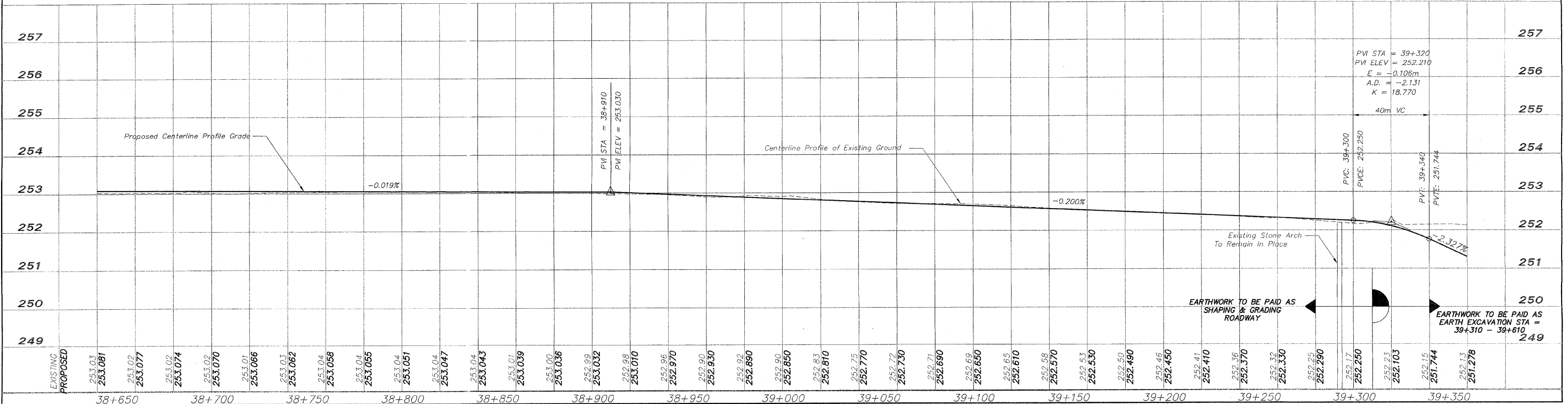
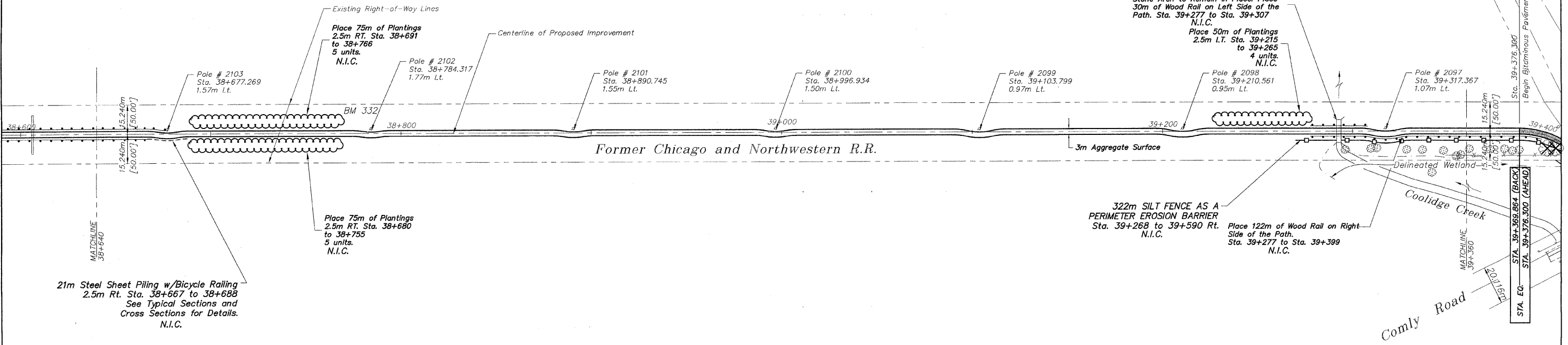
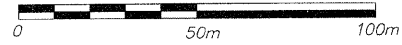
BM 332 RR Spike in Power Pole #2102
Sta. 38+784.317, 2.403m LT
Elev. 253.615

FOR INFORMATION ONLY

N.I.C. = NOT IN CONTRACT

EROSION CONTROL

- - INLET PROTECTION
- ▽ - CULVERT PIPE PROTECTION
- - - DITCH CHECK
- - SILT FENCE



NO.	REVISIONS	DATE
2	REVIEW COMMENTS	1/22/09

NO.	ITEM	DATE
2	REVIEW COMMENTS	1/22/09

PLOTTING SCALE: 1 : 1
DRAWN BY: REK
CHECKED BY:
DATE: DECEMBER, 2008

McClure
Engineering Associates, Inc.
7282 Argus Drive Rockford, Illinois 61107-5837
(815) 398-2332 FAX (815) 398-2496
Design Firm License: Illinois 184-000816
Copyright 2006 By McClure Engineering Associates, Inc.

PLAN AND PROFILE 38+640-39+360
PECATONICA PRAIRIE PATH Contract 85443
WINNEBAGO COUNTY HIGHWAY DEPARTMENT SECTION 94-00287-00-BT
FILE NAME: G:\surveys\PECPATH\1ST RELEASE\98-037 pp38+640-39+360.dwg JOB NUMBER: 04-28-98-037

SHEET NO.
14
OF
98