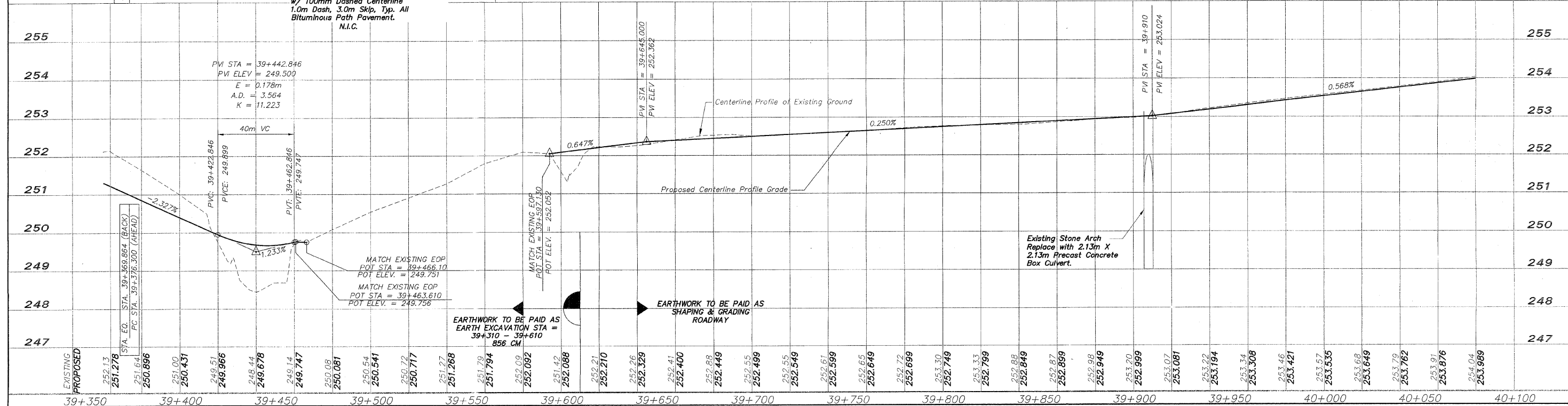
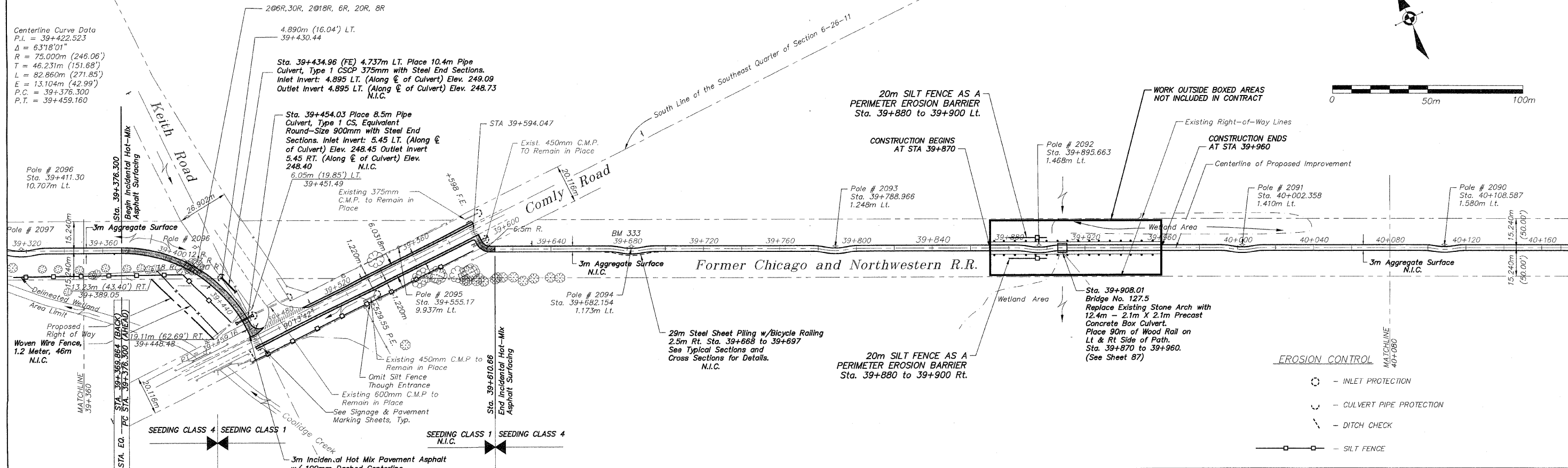
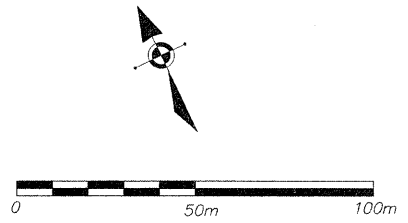


Remove Existing Fence from: RT. Sta. 39+405.5 to LT. Sta. 39+425.04 to LT. Sta. 39+451.49 to RT. Sta. 39+452.27
Cost to be included in Selective Clearing.

BM 333 RR Spike in Power Pole #2094
Sta. 39+682.139, 1.903 m LT
Elev. 253.128

N.I.C. = NOT IN CONTRACT

Centerline Curve Data
P.I. = 39+422.523
 $\Delta = 63^{\circ}18'01''$
 $R = 75.000m (246.06')$
 $T = 46.231m (151.68')$
 $L = 82.860m (271.85')$
 $E = 13.104m (42.99')$
P.C. = 39+376.300
P.T. = 39+459.160



- EROSION CONTROL**
- - INLET PROTECTION
 - ⌋ - CULVERT PIPE PROTECTION
 - - - - - DITCH CHECK
 - - SILT FENCE

REVISIONS		
NO.	ITEM	DATE
2	REVIEW COMMENTS	1/22/09

PLOTTING SCALE: 1 : 1
DRAWN BY: REK
CHECKED BY:
DATE: DECEMBER, 2008

McClure
Engineering Associates, Inc.
7282 Argus Drive Rockford, Illinois 61107-5837
18101 398-2332 FAX 18151 398-2436
Design Firm License: Illinois 184-000816
Copyright 2006 By McClure Engineering Associates, Inc.

PLAN & PROFILE 39+360/40+080
PECATONICA PRAIRIE PATH Contract 85443
WINNEBAGO COUNTY HIGHWAY DEPARTMENT SECTION 04-00267-00-BT
FILE NAME: G:\surveys\PECPATH\1ST RELEASE\98-037 pp39+360-40+080.dwg JOB NUMBER: 04-28-98-037

SHEET NO.
15
OF
98