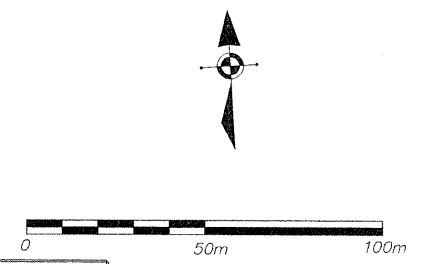
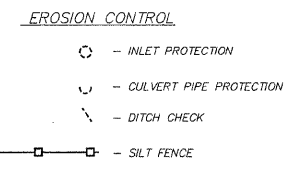
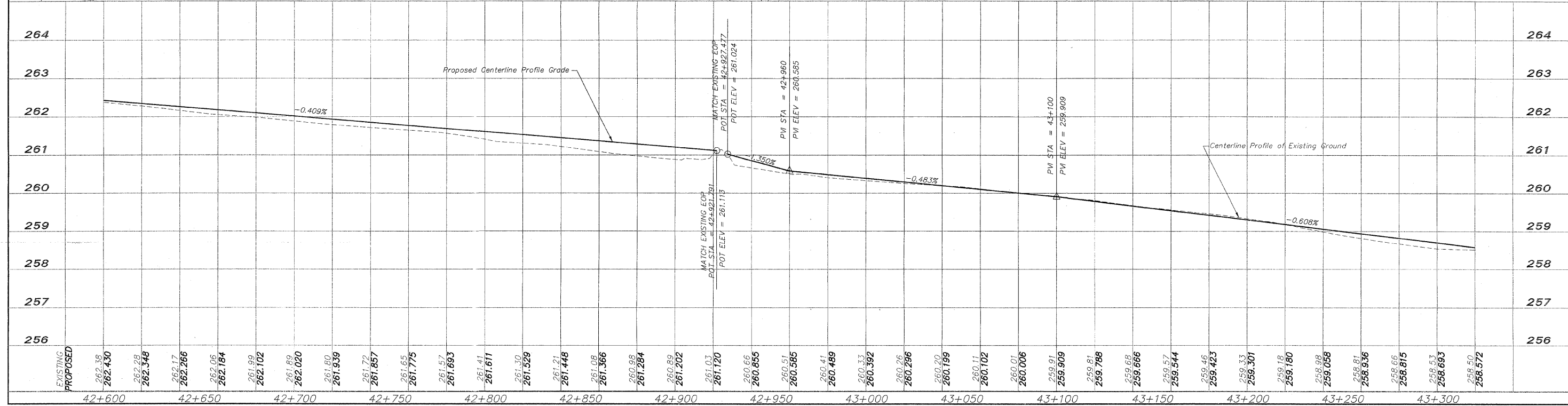
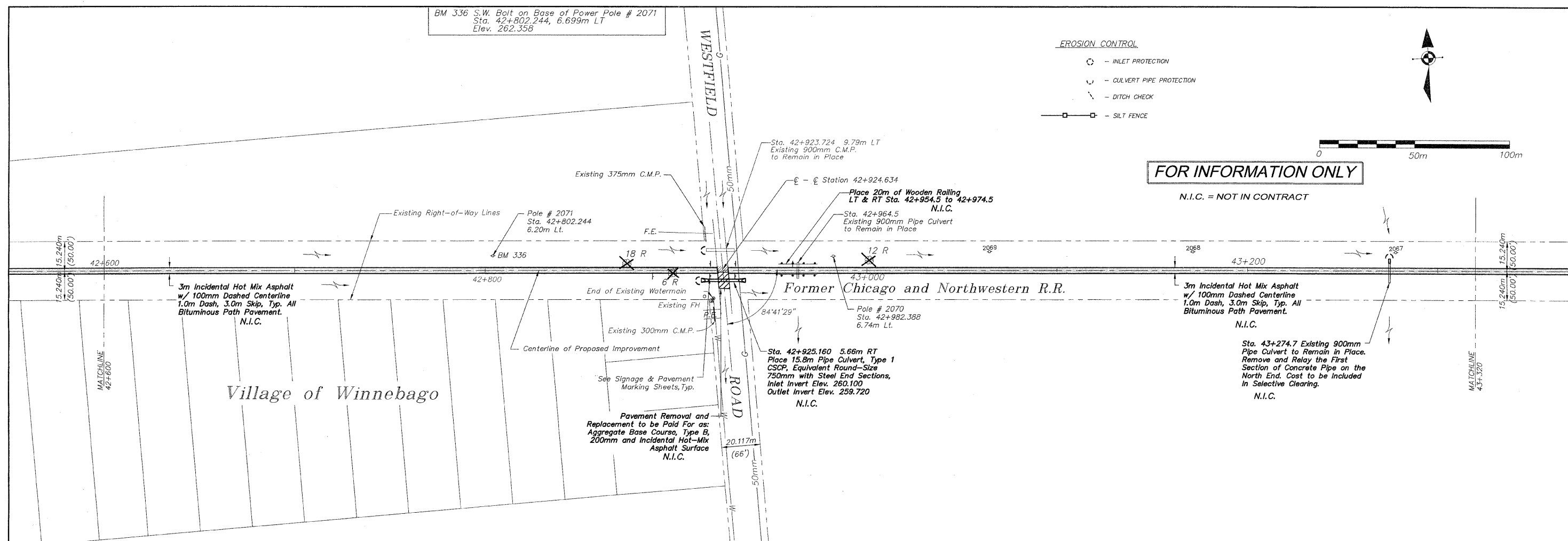


BM 336 S.W. Bolt on Base of Power Pole # 2071  
Sta. 42+802.244, 6.699m LT  
Elev. 262.358



**FOR INFORMATION ONLY**

N.I.C. = NOT IN CONTRACT



EXISTING	PROPOSED
262.38	262.430
262.28	262.348
262.17	262.266
262.06	262.184
261.99	262.102
261.89	262.020
261.80	261.939
261.72	261.857
261.65	261.775
261.57	261.693
261.41	261.611
261.30	261.529
261.21	261.448
261.08	261.366
260.98	261.284
260.89	261.202
260.72	261.120
260.66	260.855
260.51	260.585
260.41	260.489
260.33	260.392
260.26	260.296
260.20	260.199
260.11	260.102
260.01	260.006
259.91	259.909
259.81	259.788
259.68	259.666
259.57	259.544
259.46	259.423
259.33	259.301
259.18	259.180
258.98	259.058
258.81	258.936
258.68	258.815
258.53	258.693
258.50	258.572

REVISIONS		
NO.	ITEM	DATE
2	REVIEW COMMENTS	1/22/09

PLOTTING SCALE: 1 : 1  
DRAWN BY: REK  
CHECKED BY:  
DATE: DECEMBER, 2008

**McClure**  
Engineering Associates, Inc.  
7283 Argus Drive Rockford, Illinois 61107-5837  
(815) 398-2332 FAX (815) 398-2436  
Design Firm License: Illinois 184-000816  
Copyright 2006 By McClure Engineering Associates, Inc.

**PLAN AND PROFILE 42+600/43+320**  
PECATONICA PRAIRIE PATH Contract 95443  
WINNEBAGO COUNTY HIGHWAY DEPARTMENT SECTION 94-00267-00-BT  
FILE NAME: G:\surveys\PECPATH\IST RELEASE\98-037 pp42+600-43+320.dwg JOB NUMBER: 04-28-98-037

SHEET NO.  
**24**  
OF  
**98**

G:\surveys\PECPATH\IST RELEASE\98-037 pp42+600-43+320.dwg, Layout1, 3/4/2009 11:06:26 AM, 1:1, REK