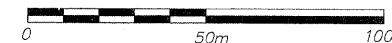


BM 337 RR Spike in Power Pole # 2062
Elev. 255.345

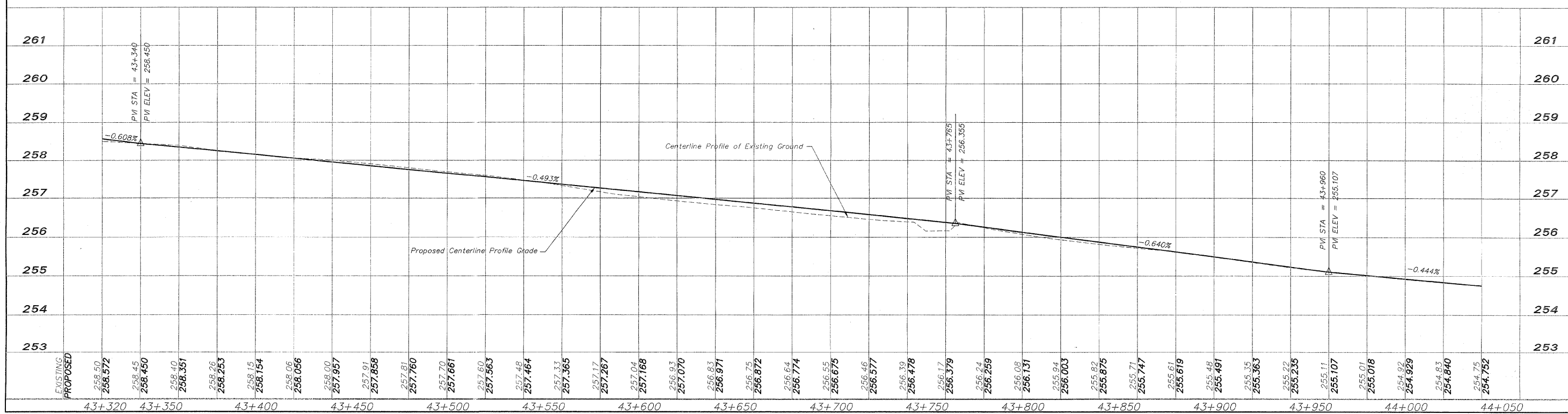
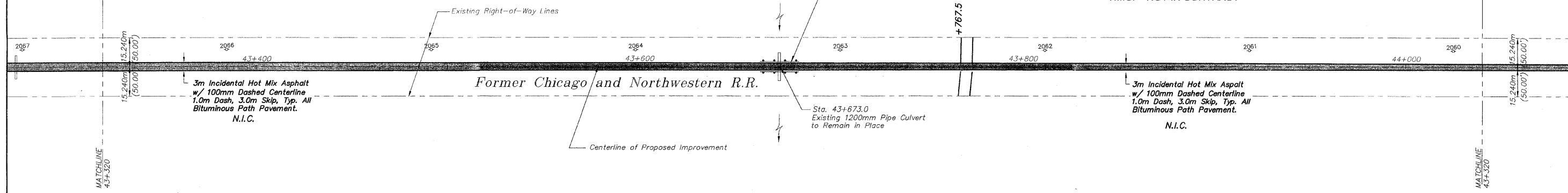
EROSION CONTROL

- INLET PROTECTION
- CULVERT PIPE PROTECTION
- DITCH CHECK
- SILT FENCE



FOR INFORMATION ONLY

N.I.C. = NOT IN CONTRACT



NO.	REVISIONS	DATE
2	REVIEW COMMENTS	1/22/09

NO.	ITEM	DATE
2	REVIEW COMMENTS	1/22/09

PLOTTING SCALE: 1 : 1
DRAWN BY: REK
CHECKED BY:
DATE: DECEMBER, 2008

McClure
Engineering Associates, Inc.
7282 Argus Drive Rockford, Illinois 61107-5837
(815) 398-2332 FAX (815) 398-2496
Design Firm License: Illinois 184-000816
Copyright 2006 By McClure Engineering Associates, Inc.

PLAN AND PROFILE 43+320/44+040
PECATONICA PRAIRIE PATH Contract 85443
WINNEBAGO COUNTY HIGHWAY DEPARTMENT SECTION 94-00267-00-BT
FILE NAME: G:\surveys\PECPATH\1ST RELEASE\98-037 pp43+320-44+040.dwg JOB NUMBER: 04-28-98-037

SHEET NO.
25
OF
98