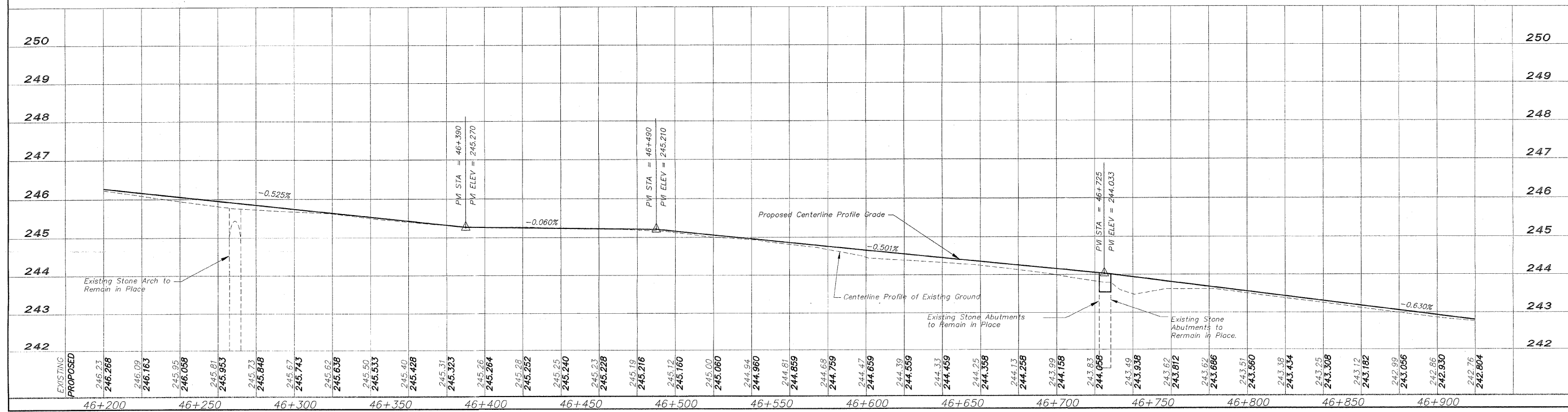


Centerline Curve Data
 P.I. = 46+613.329
 $\Delta = 17^{\circ}49'56''$
 $R = 865.000m (2837.93')$
 $T = 135.706m (445.23')$
 $L = 269.217m (883.26')$
 $E = 10.580m (34.71')$
 $P.C. = 46+477.623$
 $P.T. = 46+746.840$

FOR INFORMATION ONLY

N.I.C. = NOT IN CONTRACT



EXISTING	PROPOSED	STATION	ELEVATION
	246.23	46+200	
	246.268		
	246.09	46+250	
	246.163		
	245.95	46+300	
	246.058		
	245.81	46+350	
	245.953		
	245.73	46+400	
	245.848		
	245.67	46+450	
	245.743		
	245.62	46+500	
	245.638		
	245.50	46+550	
	245.533		
	245.40	46+600	
	245.428		
	245.31	46+650	
	245.323		
	245.26	46+700	
	245.284		
	245.28	46+750	
	245.252		
	245.25	46+800	
	245.240		
	245.23	46+850	
	245.228		
	245.19	46+900	
	245.216		
	245.12		
	245.160		
	245.00		
	245.080		
	244.94		
	244.960		
	244.81		
	244.859		
	244.68		
	244.759		
	244.47		
	244.659		
	244.39		
	244.559		
	244.33		
	244.439		
	244.25		
	244.358		
	244.13		
	244.258		
	243.99		
	244.158		
	243.83		
	244.058		
	243.49		
	243.938		
	243.62		
	243.812		
	243.62		
	243.666		
	243.51		
	243.560		
	243.38		
	243.434		
	243.25		
	243.308		
	243.12		
	243.182		
	242.99		
	243.056		
	242.86		
	242.930		
	242.76		
	242.804		

REVISIONS		
NO.	ITEM	DATE
2	REVIEW COMMENTS	1/22/09

PLOTTING SCALE: 1 : 1
 DRAWN BY: REK
 CHECKED BY:
 DATE: DECEMBER, 2008

McClure
 Engineering Associates, Inc.
 7282 Argus Drive Rockford, Illinois 61107-5837
 (815) 398-2332 FAX (815) 398-2496
 Design Firm License: Illinois 184-000816
 Copyright 2006 By McClure Engineering Associates, Inc.

PLAN AND PROFILE 46+200/46+920
 PECATONICA PRAIRIE PATH Contract 85 443
 WINNEBAGO COUNTY HIGHWAY DEPARTMENT SECTION 94-00267-00-BT
 FILE NAME: G:\surveys\PECPATH\1ST RELEASE\88-037 pp46+200-46+920.dwg JOB NUMBER: 04-28-98-037

SHEET NO.
29
 OF
98

X:\surveys\PECPATH\1ST RELEASE\88-037 pp46+200-46+920.dwg, Layout1, 3/4/2008 11:06:51 AM, 1-1, REK