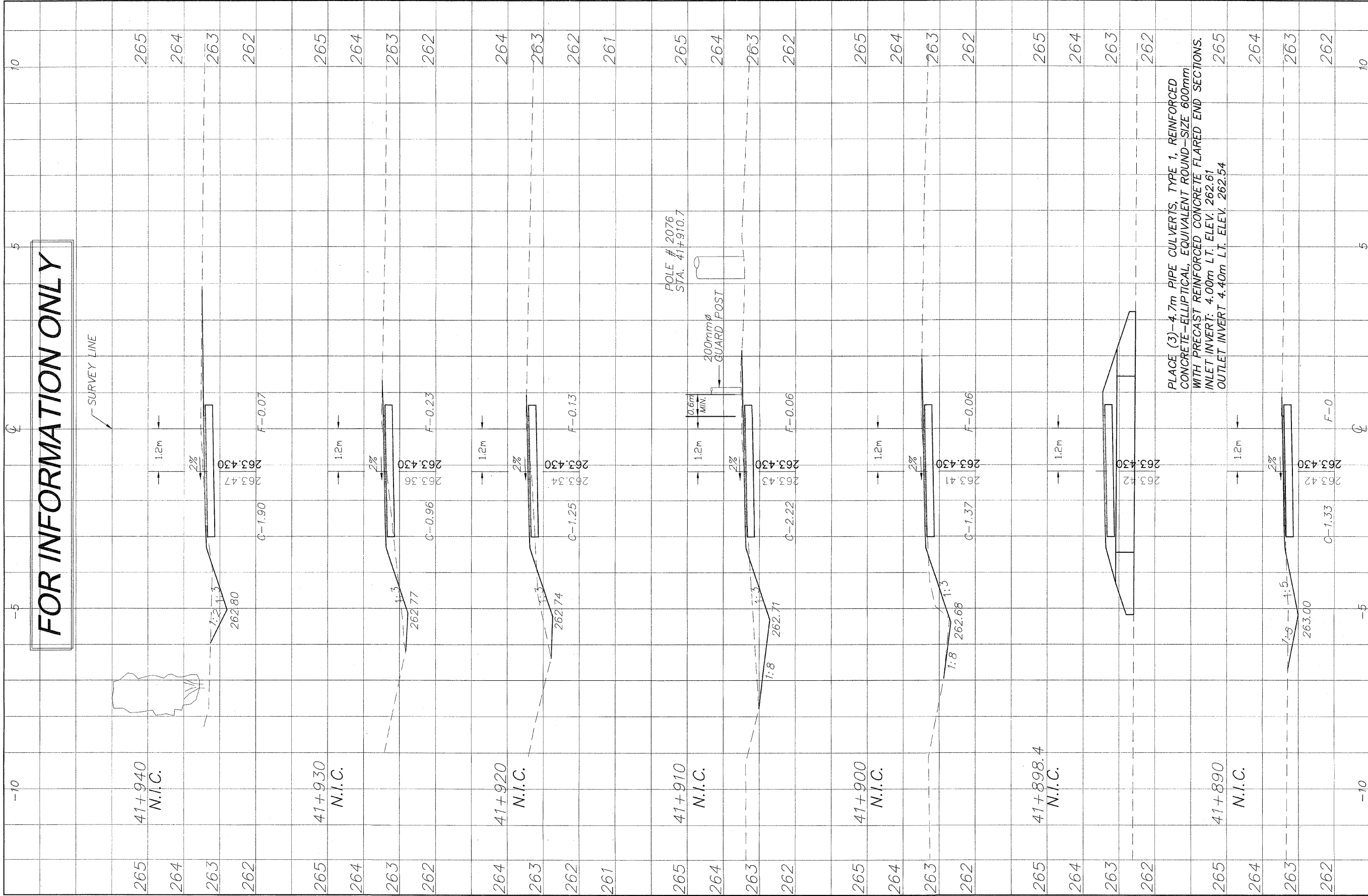


I:\surveys\PEC\PATH\1ST RELEASE\98-037 sections.dwg, 41+890 - 41+940, 3/4/2009 11:25:21 AM, 1:0.05, REK

FOR INFORMATION ONLY



PLACE (3)-4.7m PIPE CULVERTS, TYPE 1, REINFORCED CONCRETE-ELLIPTICAL, EQUIVALENT ROUND-SIZE 600mm WITH PRECAST REINFORCED CONCRETE FLARED END SECTIONS. INLET INVERT: 4.00m L.T. ELEV. 262.61 OUTLET INVERT 4.40m L.T. ELEV. 262.54

NO.	ITEM	DATE
2	REVIEW COMMENTS	1/22/09

REVISIONS		
NO.	ITEM	DATE
2	REVIEW COMMENTS	1/22/09

PLOTTING SCALE: 1 : 1
 DRAWN BY: REK
 CHECKED BY:
 DATE: DECEMBER, 2008

McClure
 Engineering Associates, Inc.
 7266 Arbus Drive Rockford, Illinois 61107-5037
 (815) 398-2332 FAX (815) 398-2496
 Design Firm License: Illinois 184-000816
 Copyright 2006 By McClure Engineering Associates, Inc.

CROSS SECTIONS 41+890/41+940
 PECATONICA PRAIRIE PATH Contract 85443
 WINNEBAGO COUNTY HIGHWAY DEPARTMENT SECTION 94-00267-00-BT
 FILE NAME: G:\surveys\PEC\PATH\1ST RELEASE\98-037 sections.dwg JOB NUMBER: 04-26-98-037

SHEET NO.
59
 OF
98