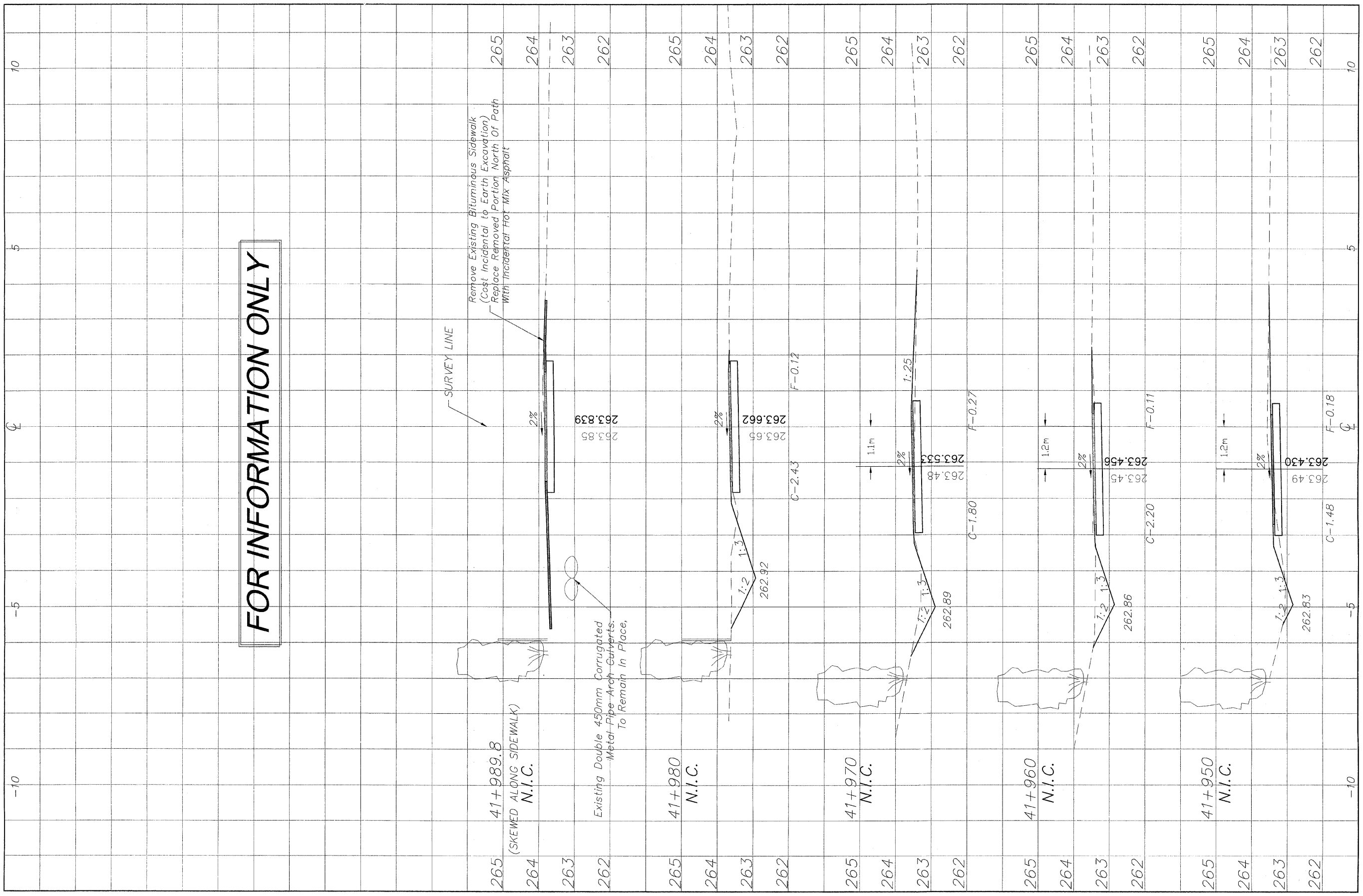


\\surveys\PEC\PATH\1ST RELEASE\98-037 sections.dwg, 41+950, 3/4/2009 11:25:36 AM, 1:0.05, REK

FOR INFORMATION ONLY



NO.	REVISIONS	DATE
2	REVIEW COMMENTS	1/22/09

NO.	ITEM	DATE
2	REVIEW COMMENTS	1/22/09

PLOTTING SCALE: 1 : 1
 DRAWN BY: REK
 CHECKED BY:
 DATE: DECEMBER, 2008

McClure
 Engineering Associates, Inc.
 7282 Argus Drive Rockford, Illinois 61107-5837
 (815) 398-2332 FAX: (815) 398-2495
 Design Firm License: Illinois 184-000816
 Copyright 2006 By McClure Engineering Associates, Inc.

CROSS SECTIONS 41+950/41+990
 PECATONICA PRAIRIE PATH Contract 85443
 WINNEBAGO COUNTY HIGHWAY DEPARTMENT SECTION 94-00267-00-BT
 FILE NAME: G:\surveys\PEC\PATH\1ST RELEASE\98-037 sections.dwg JOB NUMBER: 04-28-98-037

SHEET NO.
60
 OF
98