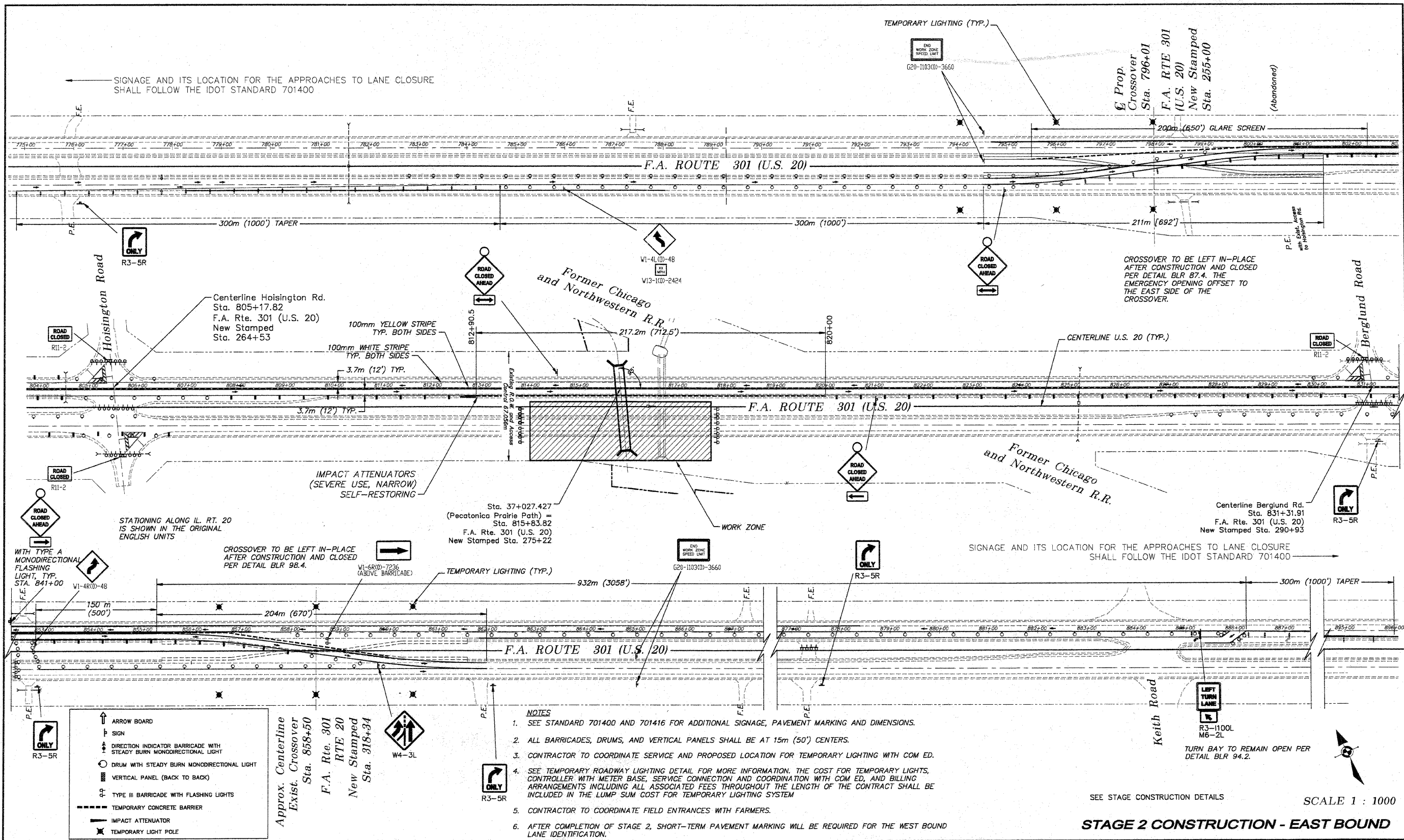


C:\surveys\PEC\PATH\IST RELEASE\98-037 route 20 x-over.dwg, STAGE 2 EAST BOUND, 3/13/2009 8:42:25 AM, 1:25.4, REK



SIGNAGE AND ITS LOCATION FOR THE APPROACHES TO LANE CLOSURE SHALL FOLLOW THE IDOT STANDARD 701400

CROSSOVER TO BE LEFT IN-PLACE AFTER CONSTRUCTION AND CLOSED PER DETAIL BLR 87.4. THE EMERGENCY OPENING OFFSET TO THE EAST SIDE OF THE CROSSOVER.

STATIONING ALONG IL. RT. 20 IS SHOWN IN THE ORIGINAL ENGLISH UNITS

SIGNAGE AND ITS LOCATION FOR THE APPROACHES TO LANE CLOSURE SHALL FOLLOW THE IDOT STANDARD 701400

- ↑ ARROW BOARD
- ↑ SIGN
- ↑ DIRECTION INDICATOR BARRICADE WITH STEADY BURN MONODIRECTIONAL LIGHT
- DRUM WITH STEADY BURN MONODIRECTIONAL LIGHT
- VERTICAL PANEL (BACK TO BACK)
- ↑ TYPE III BARRICADE WITH FLASHING LIGHTS
- TEMPORARY CONCRETE BARRIER
- IMPACT ATTENUATOR
- ✱ TEMPORARY LIGHT POLE

Approx. Centerline Exist. Crossover Sta. 856+50
F.A. Rte. 301 RTE 20 New Stamped Sta. 318+34

NOTES

1. SEE STANDARD 701400 AND 701416 FOR ADDITIONAL SIGNAGE, PAVEMENT MARKING AND DIMENSIONS.
2. ALL BARRICADES, DRUMS, AND VERTICAL PANELS SHALL BE AT 15m (50') CENTERS.
3. CONTRACTOR TO COORDINATE SERVICE AND PROPOSED LOCATION FOR TEMPORARY LIGHTING WITH COM ED.
4. SEE TEMPORARY ROADWAY LIGHTING DETAIL FOR MORE INFORMATION. THE COST FOR TEMPORARY LIGHTS, CONTROLLER WITH METER BASE, SERVICE CONNECTION AND COORDINATION WITH COM ED, AND BILLING ARRANGEMENTS INCLUDING ALL ASSOCIATED FEES THROUGHOUT THE LENGTH OF THE CONTRACT SHALL BE INCLUDED IN THE LUMP SUM COST FOR TEMPORARY LIGHTING SYSTEM
5. CONTRACTOR TO COORDINATE FIELD ENTRANCES WITH FARMERS.
6. AFTER COMPLETION OF STAGE 2, SHORT-TERM PAVEMENT MARKING WILL BE REQUIRED FOR THE WEST BOUND LANE IDENTIFICATION.

SEE STAGE CONSTRUCTION DETAILS SCALE 1 : 1000

STAGE 2 CONSTRUCTION - EAST BOUND

REVISIONS		
NO.	ITEM	DATE
2	REVIEW COMMENTS	1/22/09
3	REVIEW COMMENTS	3/9/09

PLOTTING SCALE: 1 : 1
DRAWN BY: REK
CHECKED BY:
DATE: DECEMBER, 2008

McClure
Engineering Associates, Inc.
7282 Argus Drive Rockford, Illinois 61107-5837
(815) 398-2332 FAX (815) 398-2496
Design Firm License Illinois 04-000816
Copyright 2006 By McClure Engineering Associates, Inc.

U.S. ROUTE 20 CROSSOVER
PECATONICA PRAIRIE PATH Contract 85443
WINNEBAGO COUNTY HIGHWAY DEPARTMENT SECTION 84-00287-00-BT
NAME: G:\surveys\PEC\PATH\IST RELEASE\98-037 route 20 x-over.dwg JOB NUMBER: 04-28-98-037

SHEET NO.
76
OF
98