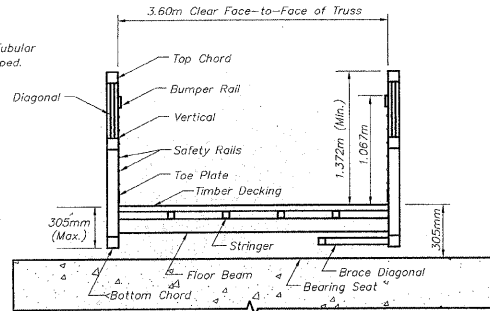
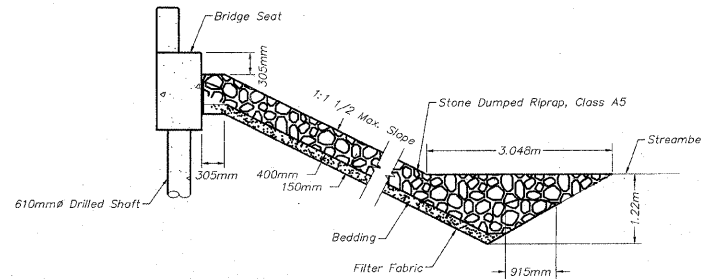


NOTE:
Exposed Ends Of Tubular
Steel Shall Be Capped.



SECTION A-A NOT TO SCALE

NOTE:
DIMENSIONS AND ELEVATIONS MAY
VARY WITH PREFABRICATED BRIDGE
MANUFACTURER. DETERMINE ACTUAL
BACK WALL HEIGHT AND BRIDGE
SEAT ELEVATION IN ACCORDANCE
WITH SHOP DRAWINGS SUPPLIED
FOR THIS PROJECT.



TYPICAL STONE RIPRAP TREATMENT NOT TO SCALE

BRIDGE 128 NOTES

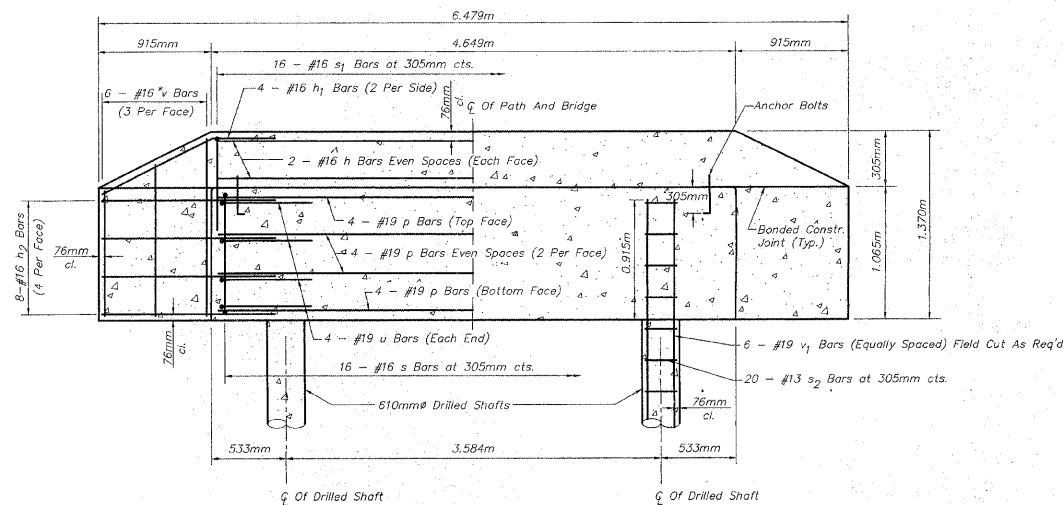
- REFER TO "BRIDGE GENERAL NOTES" SHEET FOR ADDITIONAL PREFABRICATED STEEL BRIDGE GENERAL NOTES.
- ALL TREE REMOVAL AND SELECTIVE BRUSH CLEARING SHALL BE IN ACCORDANCE WITH THE PLANS AND SPECIAL PROVISIONS OR AS DIRECTED BY THE ENGINEER. TREE REMOVAL AND SELECTIVE CLEARING WILL BE MEASURED AND PAID FOR AT THE CONTRACT UNIT PRICE FOR THE APPROPRIATE ITEM.
- CONTRACTOR SHALL PROVIDE NAME PLATE CONSTRUCTION DETAILS WITH THE SHOP DRAWINGS SUBMITTAL. NAME PLATES SHALL BE OF SIMILAR MATERIAL AND ATTACHED TO THE TRUSS SUPERSTRUCTURE ON THE RIGHT HAND SIDE OF APPROACH END WHILE LOOKING IN THE DIRECTION OF INCREASING STATIONING REFER TO NAME PLATE DETAIL FOR APPROXIMATE SIZE AND MINIMUM BRIDGE DATA REQUIRED.

**BILL OF MATERIAL
FOR BOTH ABUTMENTS**

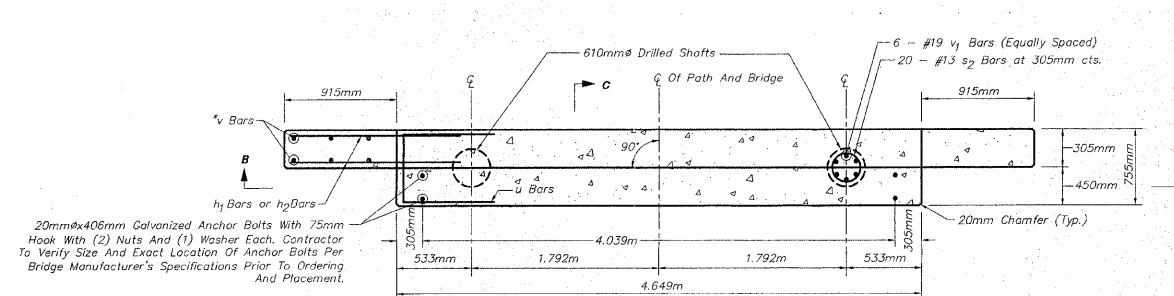
Bar	No.	Size	Length	Shape
h	8	#16	4.497m	—
h1	8	#16	1.830m	—
h2	32	#16	1.525m	—
p	24	#19	4.497m	—
s	32	#16	3.232m	□
s1	32	#16	1.983m	□
s2	80	#13	2.046m	○
u	16	#19	2.177m	□
*v	24	#16	1.218m	—
v1	24	#19	5.890m	—

Reinforcement Bars	kg	1260
Concrete Structures	CM	15.59
Anchor Bolts, M20	Each	8
Drilled Shafts in Soil	CM	5.35
Drilled Shafts in Rock	CM	0.54

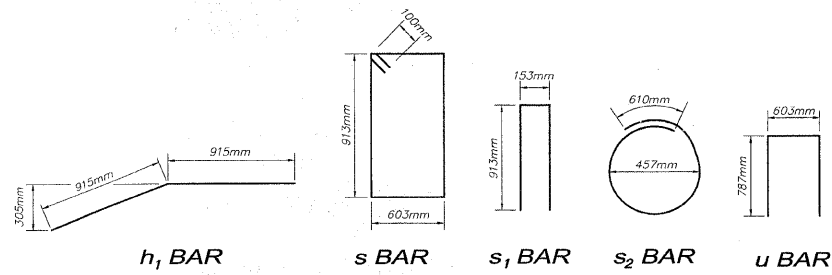
* Cut v Bars to Fit Top of Wall Taper



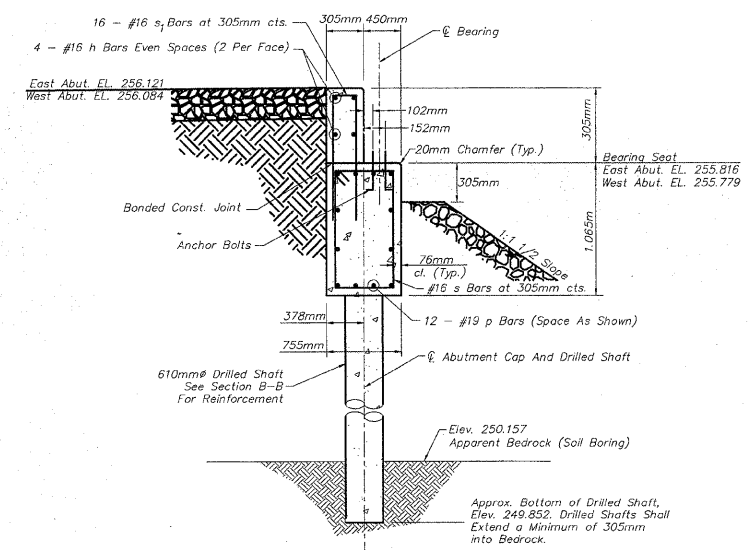
SECTION B-B NOT TO SCALE



ABUTMENT PLAN VIEW NOT TO SCALE



Reinforcement Bars are Dimensioned Outside Edge to Outside Edge.



SECTION C-C NOT TO SCALE

LOG OF BORING NO. 1									
CLIENT		PROJECT							
McClure Engineering Associates, Inc.		Pecatonica Prairie Path Bridge							
SITE		TESTS							
Old RR near Keith & Comly		SAMPLER							
Winnebago, Illinois		TESTS							
GRAPHIC LOG	DEPTH, ft.	USCS SYMBOL	NUMBER	TYPE	RECOVERY, in.	SPT - N * BLOWS /ft.	WATER CONTENT, %	DRY UNIT WT. per cu ft.	UNCONSOLIDATED STRENGTH, psi.
	1			HS					
	1	CL-ML	1	SS	10	5	31		
	3			HS					
	5	ML	2	SS	12	4	30		
	6			HS					
	8	SM	3	SS	16	6	21		
	10			HS					
	15	GP	4	SS	5	35	10		
	20			HS					
	18.5			HS					
	20			HS					
	20			HS					

WATER LEVEL OBSERVATIONS, ft.	WL 12.5	WD 5	AB	BORING STARTED	02-04-08
				BORING COMPLETED	02-04-08
				RIG	68 FOREMAN JH
				APPROVED	JPJ JOB # 19085014



**BRIDGE DETAILS
OVER COOLIDGE CREEK
SECTION 94-00267-00-BT
WINNEBAGO COUNTY
STATION 40+436.02**

REVISIONS		
NO.	ITEM	DATE
1	Additional Reinforcement to Abutments	1/19/2009
2	IDOT Review Comments and Internal Review	1/28/2009

PLOTTING SCALE:	1 : 1
DRAWN BY:	PLH/JRC/CDS
CHECKED BY:	
DATE:	DECEMBER, 2008

McClure Engineering Associates, Inc.
7282 Argus Drive Rockford, Illinois 61107-5837
(815) 398-2332 FAX (815) 398-2496
Design Firm License: Illinois 184-000816
Copyright 2009 By McClure Engineering Associates, Inc.

BRIDGE NO. 128 STA. 40+436.02	
PECATONICA PRAIRIE PATH Contract 85443	
WINNEBAGO COUNTY HIGHWAY DEPARTMENT SECTION 94-00267-00-BT	
FILE NAME: G:\surveys\PECPATH\1ST RELEASE\98-037 b128.dwg	JOB NUMBER: 04-28-98-037

SHEET NO.
**89
OF
98**