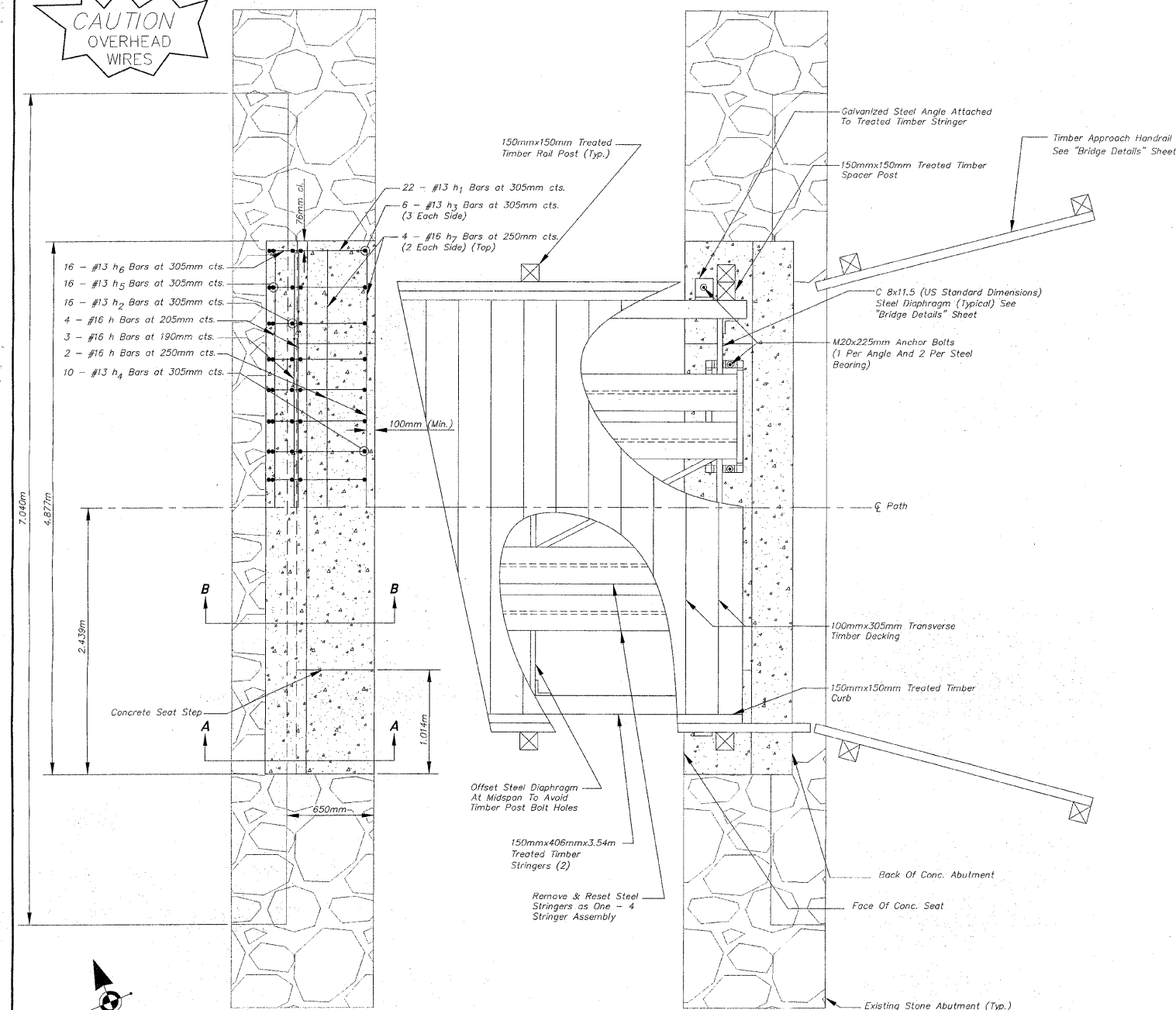


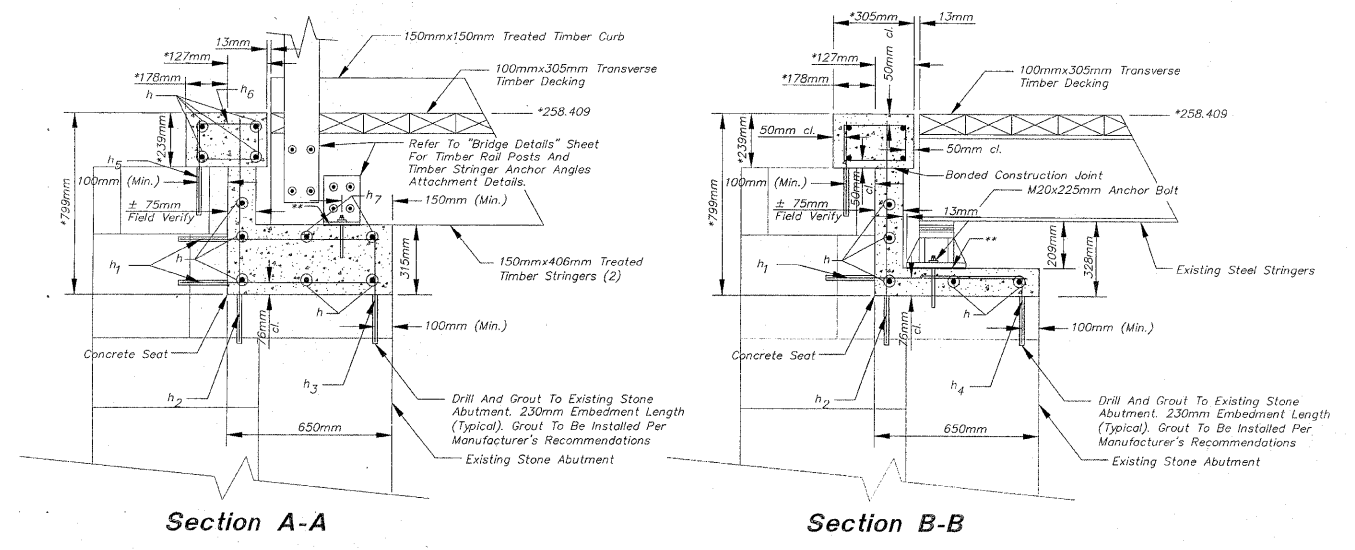
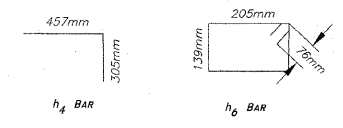
**CAUTION  
OVERHEAD  
WIRES**



**PLAN** NOT TO SCALE

**BILL OF MATERIAL FOR BOTH ABUTMENTS**

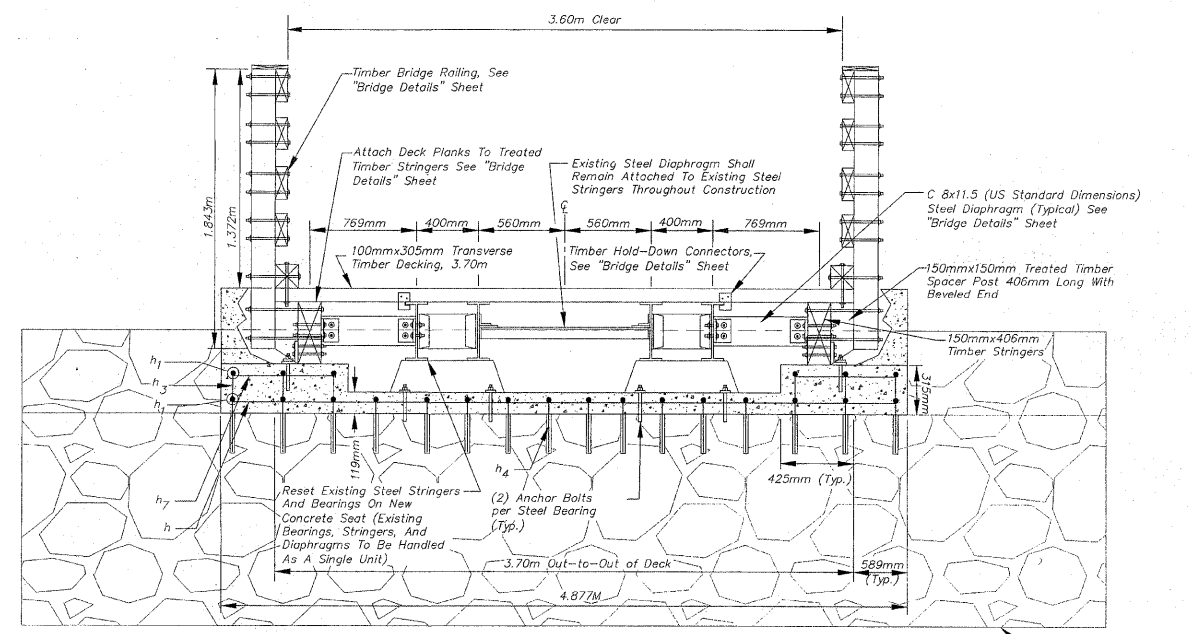
Bar	No.	Size	Length	Shape
h	18	#16	4.725m	—
h <sub>1</sub>	44	#13	0.779m	—
h <sub>2</sub>	32	#13	0.978m	—
h <sub>3</sub>	12	#13	0.494m	—
h <sub>4</sub>	20	#13	0.762m	□
h <sub>5</sub>	32	#13	0.418m	—
h <sub>6</sub>	32	#13	0.840m	□
h <sub>7</sub>	8	#16	0.862m	—
Reinforcement Bars		kg	270	
Concrete Structures		CM	2.26	
Drill and Grout Bars		Each	140	
Anchor Bolts, M20		Each	12	



\* The Concrete Abutment Backwall Above The Existing Stone Abutment Shall Be Cast After The Timber And Steel Stringers Have Been Set In-Place. Field Verify Dimension To Match Top Of Timber Deck.

\*\* Provide 3mm Elastomeric Neoprene Levelling Pad According To The Material Properties Of Art. 1052.02 Of The IDOT Standard Specifications (Typ.). This Item Of Work Shall Not Be Paid For Separately But Shall Be Included With The Cast Of Concrete Structures.

**CONCRETE SEAT DETAIL** NOT TO SCALE



**SECTION THRU DECK** NOT TO SCALE

**FOR INFORMATION ONLY**

**BRIDGE DETAILS  
OVER A TRIBUTARY DITCH  
TO THE KEITH CREEK  
SECTION 94-00267-00-BT  
WINNEBAGO COUNTY  
STATION 40+864.19**

REVISIONS		
NO.	ITEM	DATE
2	IDOT Review Comments and Internal Review	1/28/2009

PLOTTING SCALE: 1 : 1

DRAWN BY: PLH/JRC/CDS

CHECKED BY:

DATE: DECEMBER, 2008

**McClure**  
Engineering Associates, Inc.

7282 Argus Drive Rockford, Illinois 61107-5837  
(815) 398-2332 FAX (815) 398-2496

Design Firm License: Illinois 184-000816  
Copyright 2009 By McClure Engineering Associates, Inc.

**BRIDGE NO. 129 STA. 40+864.19**

**PECATONICA PRAIRIE PATH** Contract 85443  
WINNEBAGO COUNTY HIGHWAY DEPARTMENT SECTION 94-00267-00-BT

FILE NAME: G:\surveys\PECPATH\1ST RELEASE\98-037 b129-130.dwg JOB NUMBER: 04-28-98-037

SHEET NO.  
**91  
OF  
98**