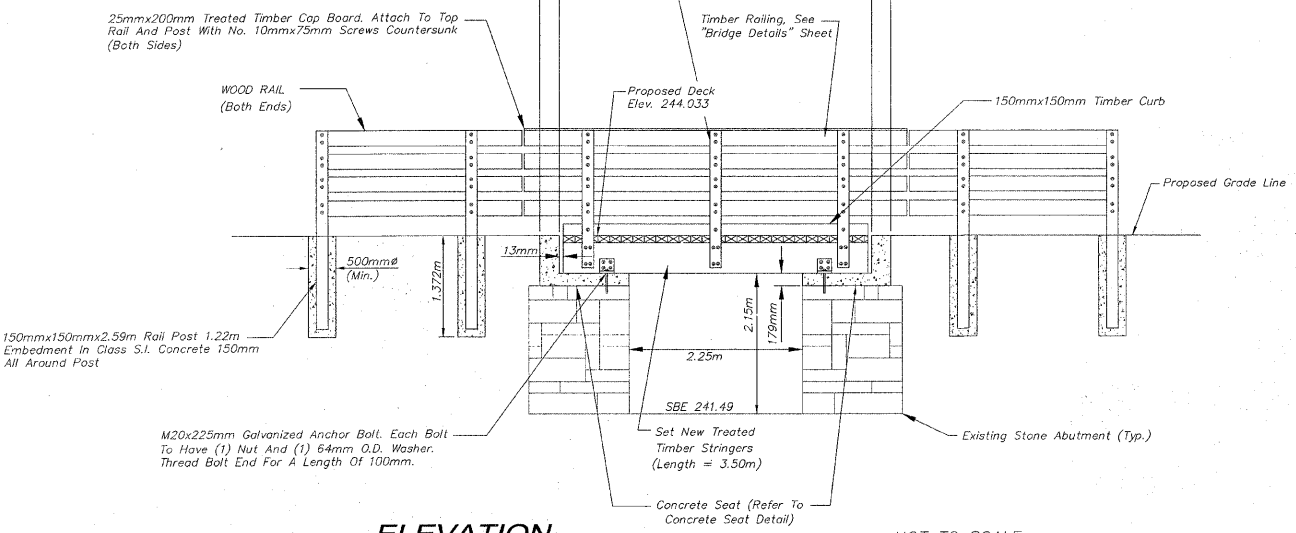
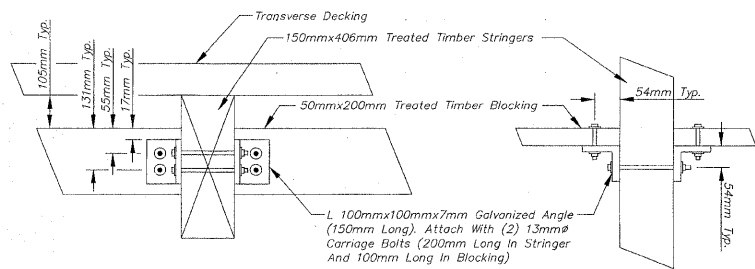


**BENCH MARK**

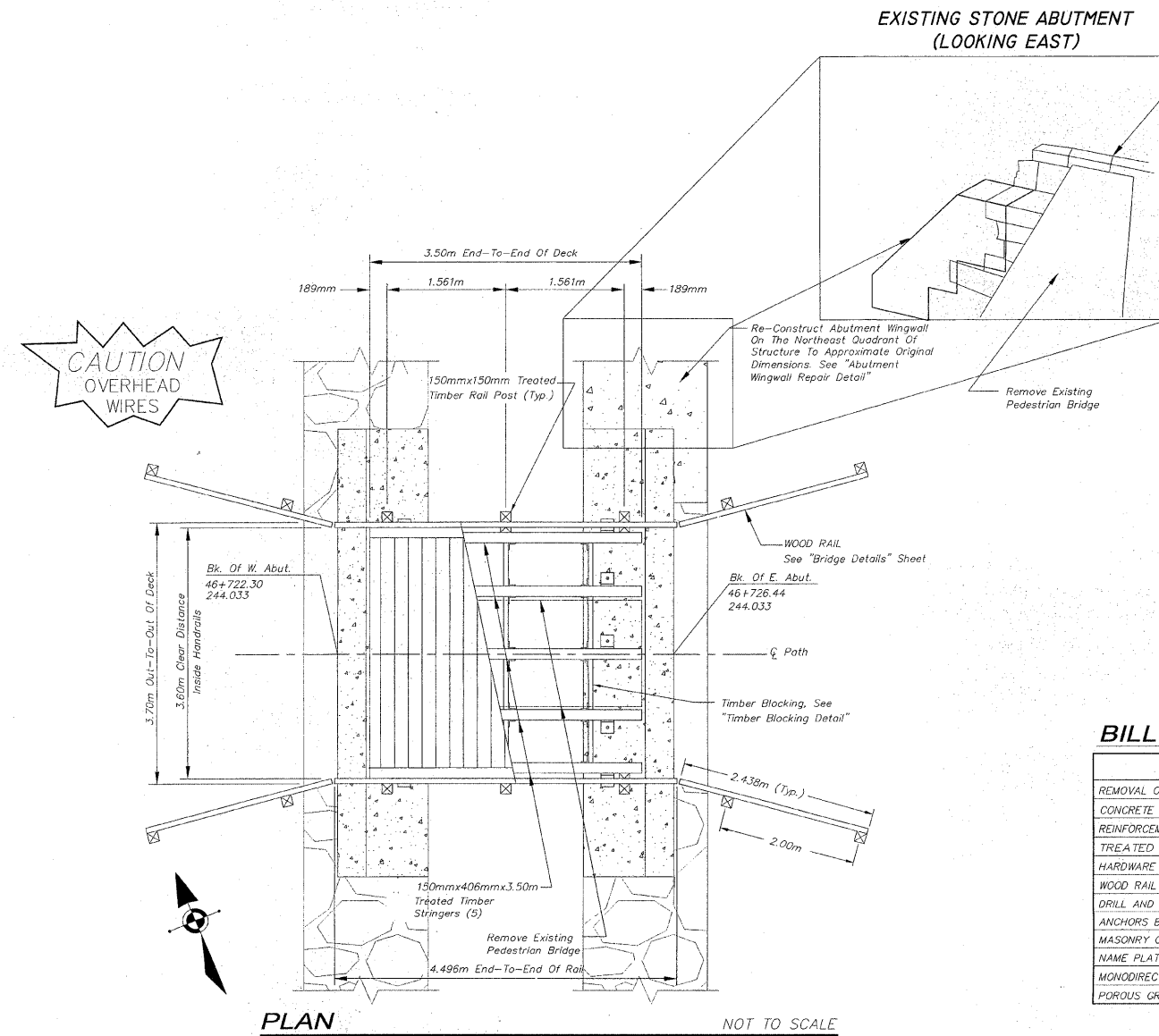
BM A-228 Standard USC&GS Disk  
 Station 46+113.487 10.363m Rt  
 Elev. = 246.163



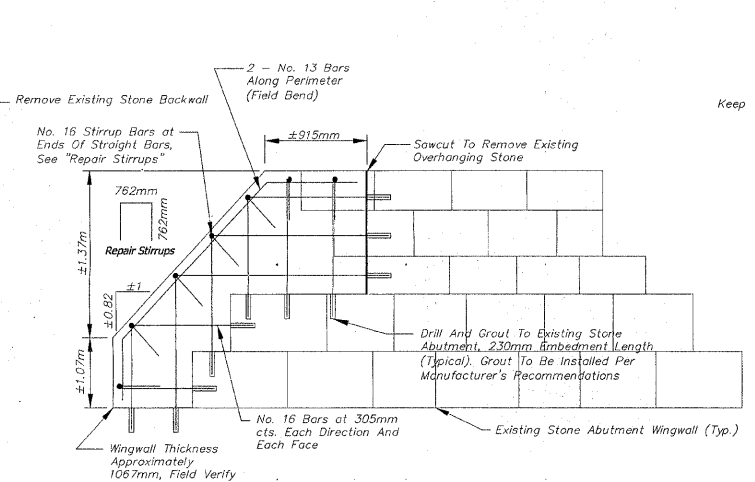
**ELEVATION** NOT TO SCALE



**TIMBER BLOCKING DETAIL** NOT TO SCALE



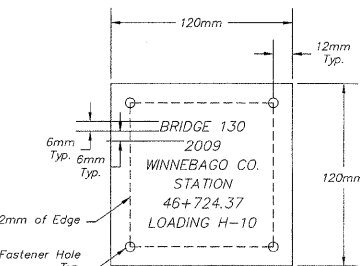
**PLAN** NOT TO SCALE



**ABUTMENT WINGWALL REPAIR DETAIL** NOT TO SCALE

**BRIDGE 130 NOTES**

- REFER TO "BRIDGE GENERAL NOTES" SHEET FOR ADDITIONAL TIMBER BRIDGE GENERAL NOTES.
- THE CONTRACTOR SHALL REMOVE ALL ELEMENTS OF THE EXISTING TIMBER SUPERSTRUCTURE AND PROPERLY DISPOSE OF OFF-SITE. THIS INCLUDES THE TRANSVERSE RAILROAD TIES, TIMBER WALKWAY, STEEL ANGLE RAIL POSTS AND CABLE, TIMBER BEARING SUPPORTS, AND ANY OTHER ITEMS AS APPLICABLE TO THE EXISTING TIMBER SUPERSTRUCTURE. ALL ITEMS TO BE REMOVED SHALL BE DISPOSED OF IN CONFORMANCE WITH THE REQUIREMENTS OF SECTION 202.03 OF THE IDOT STANDARD SPECIFICATIONS. ALL MATERIAL AND LABOR NECESSARY TO COMPLETE THIS ITEM OF WORK SHALL BE INCLUDED IN THE CONTRACT UNIT PRICE FOR REMOVAL OF EXISTING SUPERSTRUCTURE WITH NO ADDITIONAL COMPENSATION ALLOWED.
- CONTRACTOR SHALL REMOVE ANY LOOSE OR DETERIORATED MORTAR FROM THE EXISTING MASONRY LIMESTONE ABUTMENT JOINTS, CLEAN, AND TUCK POINT IN ACCORDANCE WITH THE CONTRACT SPECIAL PROVISIONS. THIS WORK WILL BE PAID FOR AS LUMP SUM AT THE CONTRACT UNIT PRICE FOR MASONRY CLEANING & TUCKPOINTING.
- ALL TREE REMOVAL AND SELECTIVE BRUSH CLEARING SHALL BE IN ACCORDANCE WITH THE PLANS AND SPECIAL PROVISIONS OR AS DIRECTED BY THE ENGINEER. TREE REMOVAL AND SELECTIVE CLEARING WILL BE MEASURED AND PAID FOR AT THE CONTRACT UNIT PRICE FOR THE APPROPRIATE ITEM.
- CONTRACTOR SHALL FURNISH AND INSTALL A BRASS NAME PLATE IN ACCORDANCE WITH SECTION 515 OF THE IDOT STANDARD SPECIFICATIONS EXCEPT THAT IT SHALL BE INSTALLED WITH FOUR (4) TAMPER RESISTANT SCREWS TO THE TOP TIMBER BRIDGE RAIL ON THE RIGHAND SIDE OF APPROACH END WHILE LOOKING IN THE DIRECTION OF INCREASING STATIONING. THE PLATE SHALL BE MADE OF SOLID BRASS 3mm THICK WITH IMPRINTED STAMP LETTERING 6mm HIGH. THIS ITEM WILL BE MEASURED AND PAID FOR AT THE CONTRACT UNIT PRICE FOR NAME PLATES.
- THE MATERIAL AND LABOR FOR THE ABUTMENT REPAIR WILL NOT BE PAID FOR SEPARATELY BUT SHALL BE INCLUDED IN THE CONCRETE STRUCTURES, REINFORCING BARS AND DRILL & GROUT BARS QUANTITIES. THE MATERIAL AND LABOR FOR THE TIMBER BLOCKING WILL NOT BE PAID FOR SEPARATELY BUT SHALL BE INCLUDED IN THE TREATED TIMBER AND HARDWARE QUANTITIES.



**NAME PLATE**

**DESIGN LOADING**

H-10

**DESIGN STRESSES**

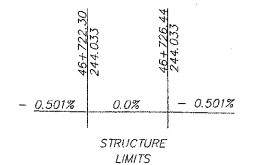
$f_c = 24 \text{ MPa}$   
 Reinforcing  $f_y = 420 \text{ MPa}$   
 Fasteners  $f_y = 250 \text{ MPa}$   
 Structural Timber  $F_b = 9.3 \text{ MPa}$   
 Structural Timber  $F_v = 1.14 \text{ MPa}$

**DESIGN SPECIFICATIONS**

2002 AASHTO Standard Specifications - 17th Edition

**SEISMIC DATA**

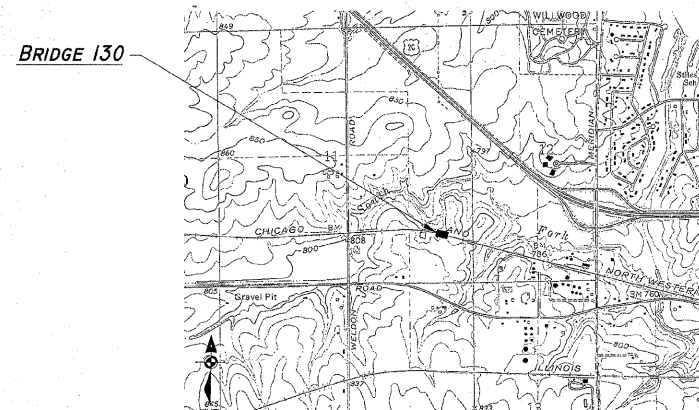
Seismic Performance Category (SPC) = A  
 Bedrock Acceleration Coefficient (A) = 3.25%  
 Site Coefficient(s) = 1.0



**PROFILE GRADE**

**BILL OF MATERIAL-BRIDGE 130**

ITEM	UNIT	QUANTITY
REMOVAL OF EXISTING SUPERSTRUCTURE	EA	1
CONCRETE STRUCTURES	CM	8.72
REINFORCEMENT BARS	Kg	486
TREATED TIMBER	CM	3.71
HARDWARE	Kg	194
WOOD RAIL	M	9.75
DRILL AND GROUT BARS	EA	144
ANCHORS BOLTS, M20	EA	10
MASONRY CLEANING & TUCKPOINTING	LS	1
NAME PLATE	EA	1
MONODIRECTIONAL PRISMATIC BARRIER REFLECTOR	EA	12
POROUS GRANULAR EMBANKMENT	CM	5



**LOCATION SKETCH**

**FOR INFORMATION ONLY**

**GENERAL PLAN & ELEVATION OVER A TRIBUTARY DITCH TO THE KEITH CREEK**  
**SECTION 94-00267-00-BT**  
**WINNEBAGO COUNTY**  
**STATION 46+724.37**

**REVISIONS**

NO.	ITEM	DATE
2	IDOT Review Comments and Internal Review	1/28/2009

PLOTTING SCALE: 1 : 1  
 DRAWN BY: PLH/JRC/CDS  
 CHECKED BY:  
 DATE: DECEMBER, 2008

**McClure**  
 Engineering Associates, Inc.  
 7282 Argus Drive Rockford, Illinois 61107-5837  
 (815) 398-2332 FAX (815) 398-2496  
 Design Firm License: Illinois 184-000815  
 Copyright 2009 By McClure Engineering Associates, Inc.

**BRIDGE NO. 130 STA. 46+724.37**

**PECATONICA PRAIRIE PATH** Contract 85443  
**WINNEBAGO COUNTY HIGHWAY DEPARTMENT** SECTION 94-00267-00-BT  
 FILE NAME: G:\surveys\PECPATH\1ST RELEASE\98-037 b129-130.dwg JOB NUMBER: 04-28-98-037

SHEET NO.

**93 OF 98**