

**TYSON ENGINEERING, INC.**  
 CONSULTING CIVIL ENGINEERS AND SURVEYORS  
 DESIGN FIRM LICENSE #161-001136  
 367 SOUTH SCHUYLER AVENUE  
 KANKAKEE, ILLINOIS 60901  
 PHONE (815) 932-7406

This document and the ideas and designs incorporated herein, as an instrument of professional service, is the property of Tyson Engineering Inc. and is not to be used in whole or in part, for any other project without written authorization of Tyson Engineering Inc.

Do not scale drawings. Use dimensions only. Contractor shall be responsible for verifying all dimensions.

Information hereon and herein is confidential.

NO.	DATE	BY	DESCRIPTION
1	3/13/09	NRD	PER IDOT REVIEW

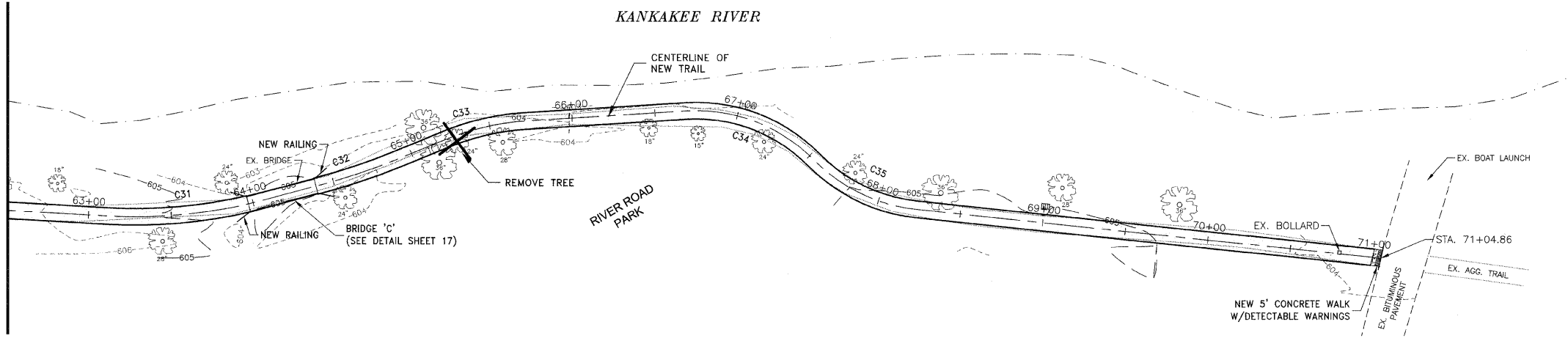
**PLAN & PROFILE**  
 STA. 62+50 TO STA. 71+02.23

**IMPROVEMENTS TO SERVE RIVERFRONT TRAIL PHASE 1**

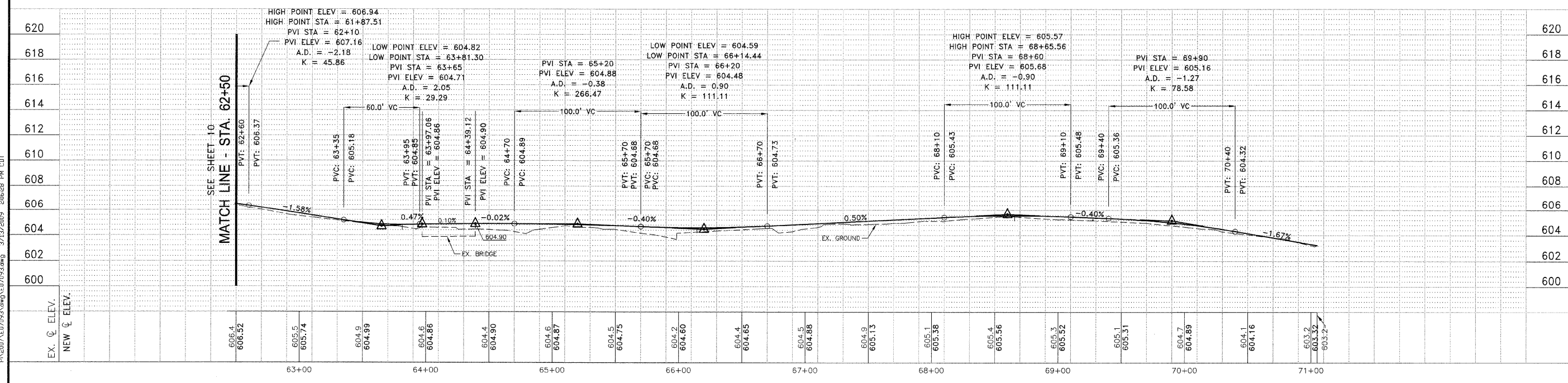
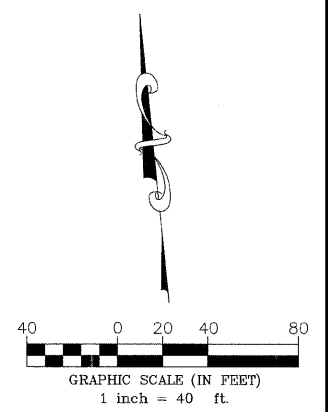
SECTION 06-00001-00-BT

DATE: DATE JOB NO. E07093  
 SCALE: HORZ.: 1"=40' FILE NO.  
 VERT.: 1"=4'  
 DRAWN BY: NRD SHEET 11  
 CHECKED BY: SRM OF 18

SEE SHEET 10  
 MATCH LINE - STA. 62+50



CURVE TABLE					
CURVE	LENGTH	RADIUS	TANGENT	DELTA ANGLE	P.I. STATION
C1	10.63	10.00	5.88	60°52'44"	61+81.59
C2	104.84	100.00	57.82	60°04'13"	61+78.74
C3	82.34	100.00	43.87	47°10'43"	62+69.43
C4	554.58	2000.00	279.08	15°53'15"	65+87.18
C5	60.79	150.00	30.82	23°13'17"	66+93.50
C6	58.15	200.00	29.28	16°39'35"	67+52.75
C7	115.66	100.00	65.27	66°18'05"	68+93.03
C8	88.34	100.00	47.28	50°36'45"	69+90.69
C9	94.79	100.00	51.30	54°18'41"	70+67.53
C10	72.53	100.00	37.94	41°33'16"	71+48.96
C11	78.72	500.00	39.44	9°01'15"	72+66.88
C12	72.16	200.00	36.48	20°40'19"	73+42.84
C13	148.88	125.00	84.55	68°08'57"	74+70.84
C14	184.29	101.00	106.80	93°12'00"	75+41.57
C15	439.15	800.00	229.93	41°56'09"	78+17.30
C16	138.97	450.00	89.02	17°26'24"	80+24.52
C17	83.84	110.00	44.07	43°40'07"	81+36.54
C18	51.10	220.00	25.67	13°18'34"	82+01.98
C19	58.65	100.00	30.20	33°36'22"	82+73.19
C20	142.85	900.00	71.58	9°05'40"	83+73.22
C21	66.34	400.00	33.25	9°30'10"	84+77.75
C22	66.48	227.85	28.39	14°12'11"	85+42.72
C23	51.89	300.00	26.01	9°54'39"	86+24.63
C24	53.69	200.00	27.01	15°22'53"	87+77.52
C25	51.80	450.00	25.93	6°35'44"	88+12.99
C26	50.98	700.00	25.50	4°10'22"	88+74.31
C27	57.03	250.00	28.84	13°04'16"	89+26.72
C28	52.25	200.00	26.27	14°58'07"	89+94.94
C29	79.59	500.00	39.88	9°07'13"	90+73.15
C30	56.22	1200.00	28.12	2°41'04"	91+01.33
C31	94.63	300.00	47.71	18°04'24"	91+59.67
C32	50.59	400.00	25.33	7°14'47"	92+65.47
C33	51.96	160.00	26.21	18°36'30"	93+47.63
C34	85.35	100.00	45.47	48°54'02"	94+14.52
C35	68.67	100.00	35.75	39°20'36"	94+90.15



FN:20071007093.dwg 3/13/2009 2:06:28 PM CDT