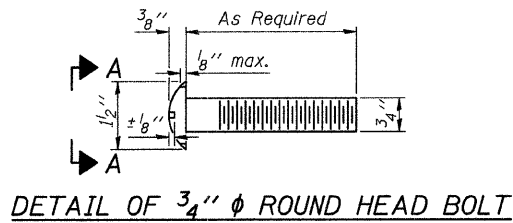
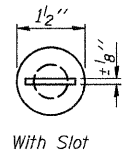


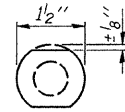
FOR RAIL POST SPACING SEE SH.#6 OF 15.



DETAIL OF 3/4"  $\phi$  ROUND HEAD BOLT

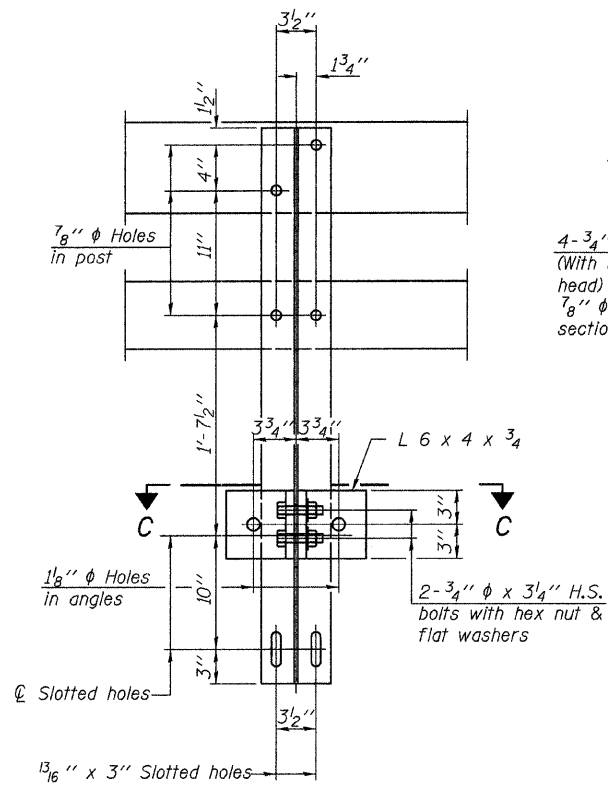


With Slot

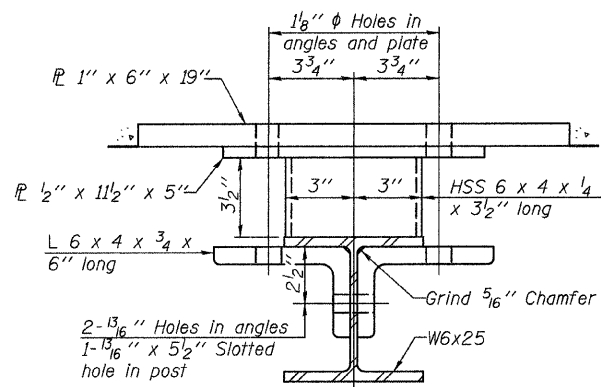


Without Slot or Recess  
VIEW A-A

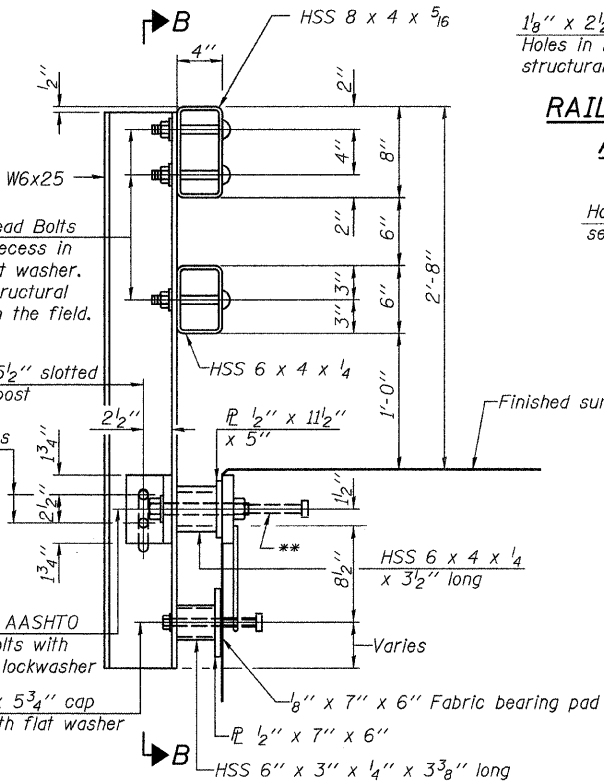
4-3/4"  $\phi$  x 6" Round Head Bolts (With slot or approved recess in head) with locknut & flat washer. 7/8"  $\phi$  holes in hollow structural section may be drilled in the field.



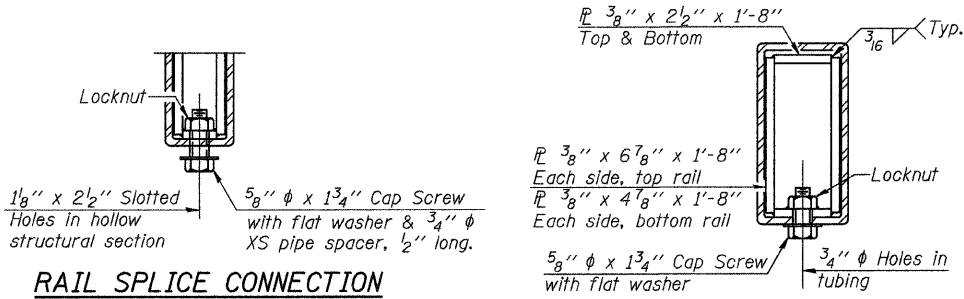
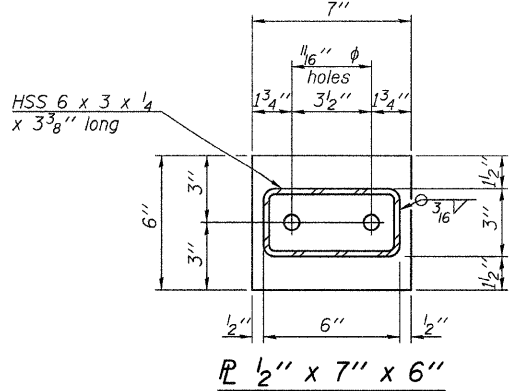
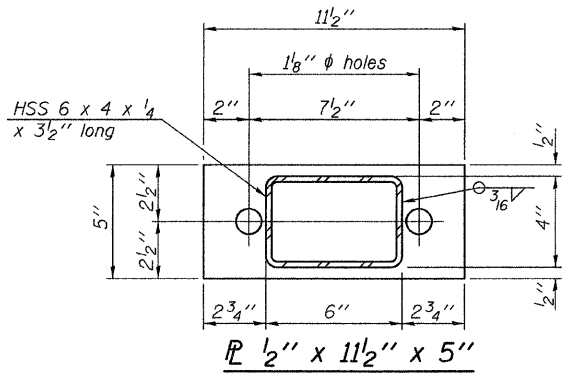
SECTION B-B



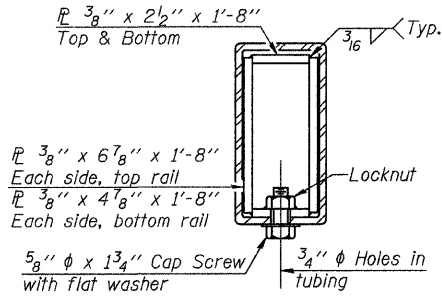
SECTION C-C



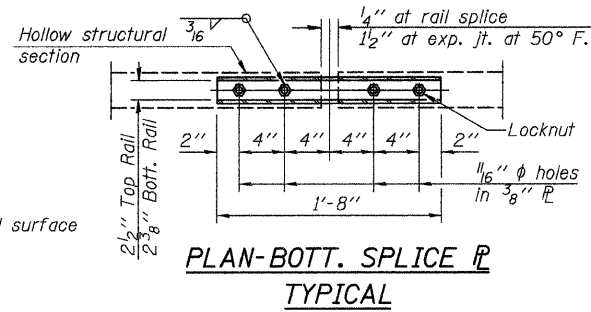
SECTION AT RAIL POST



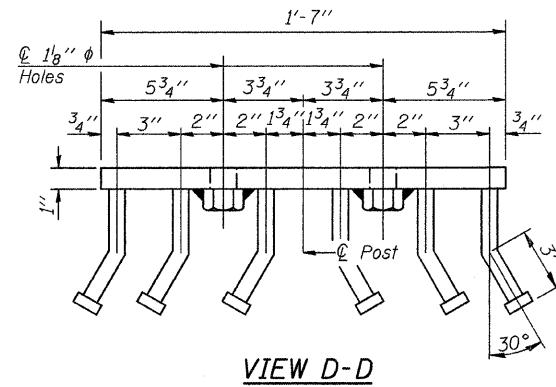
RAIL SPLICE CONNECTION AT EXPANSION JT.



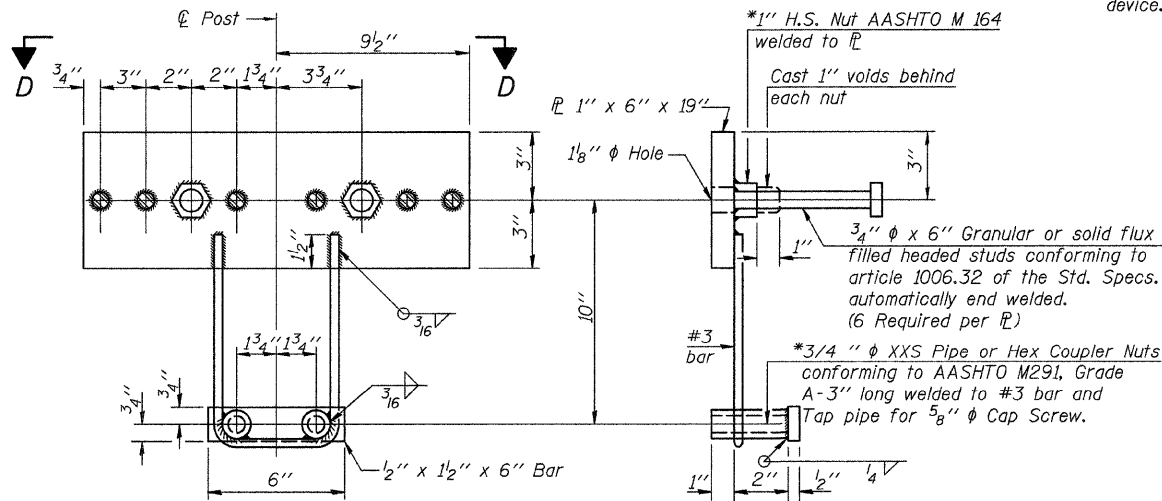
SECTION AT RAIL SPLICE



PLAN-BOTT. SPLICE TYPICAL



VIEW D-D



ANCHOR DEVICE

Notes:  
All field drilled holes shall be coated with an approved zinc rich paint before erection.  
For multi-span bridges, sufficient 1/4" x 6" x 1'-2" galvanized steel shims shall be provided to align rail between adjacent spans. Cost included with Steel Bridge Rail, Type SM (Special).  
Steel rail elements shall be galvanized according to Article 509.05 of the Standard Specifications.  
\*\* The studs of the anchor devices shall be placed below the top reinforcement bars and the outermost longitudinal reinforcement bar shall be placed directly above the studs of the rail post anchor device.

BILL OF MATERIAL

Item	Unit	Quantity
Steel Bridge Rail, Type SM (Special)	Foot	143

STEEL RAILING, TYPE SM (SPECIAL)  
COUNTY HIGHWAY 10 OVER  
FOUNTAIN CREEK TRIBUTARY  
SEC. 07-00216-01-BR  
IROQUOIS COUNTY  
STATION 20+02.60  
(Sheet 1 of 2)

\*Threaded areas shall be plugged or blocked off during casting of deck. Galvanized after fabrication.