

PLANS FOR PROPOSED FEDERAL-AID HIGHWAY BRIDGE PROGRAM AND ARRA PROJECT

F.A.S. 174 (C.H. 6) SHABBONA ROAD

STRUCTURE NO. 019-3031

SECTION 05-00213-00-BR

DEKALB COUNTY

PROJECT ARA-0174(118)

JOB NO. C93-114-09

INDEX OF SHEETS

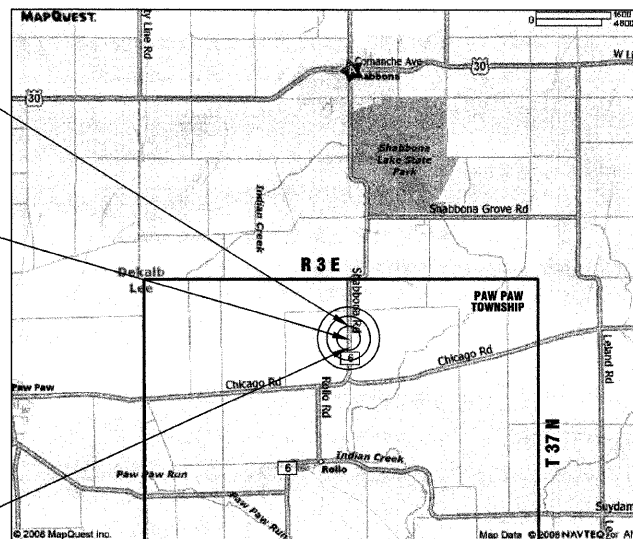
1. COVER SHEET
2. SUMMARY AND SCHEDULE OF QUANTITIES AND TYPICAL SECTIONS
3. PLAN AND PROFILE
- 4-5. ROADWAY CROSS SECTIONS
6. GENERAL PLAN AND ELEVATION OF BRIDGE
- 7-8. DECK ELEVATIONS
- 9-10. SUPERSTRUCTURE DETAILS
11. STEEL BRIDGE RAIL, TYPE SM
12. BEARING DETAILS
13. STRUCTURAL STEEL DETAILS
14. SUBSTRUCTURE - ABUTMENTS
15. SUBSTRUCTURE DETAILS
16. PILING DETAILS
17. EROSION & SEDIMENT CONTROL PLAN

- STANDARDS:**
- 000001-05 STANDARD SYMBOLS, ABBREVIATIONS, AND PATTERNS
 - 001001-02 AREAS OF REINFORCEMENT BARS
 - 280001-04 TEMPORARY EROSION CONTROL SYSTEMS
 - 515001-03 NAME PLATE FOR BRIDGES
 - 630201-06 PCC/HMA STABILIZATION AT STEEL PLATE BEAM GUARDRAIL
 - 630301-05 SHOULDER WIDENING FOR TYPE 1 (SPECIAL) GUARDRAIL TERMINALS
 - 635006-03 REFLECTOR AND TERMINAL MARKER PLACEMENT
 - 635011-02 REFLECTOR MARKER AND MOUNTING DETAILS
 - 701901-01 TRAFFIC CONTROL DEVICES
 - BLR 21-8 TYPICAL APPLICATION OF TRAFFIC CONTROL DEVICES
 - BLR 23-3 TRAFFIC BARRIER TERMINAL, TYPE 1
 - BLR 26-1 STEEL PLATE BEAM GUARD RAIL - 27 1/2" HEIGHT
 - BLR 27-1 TRAFFIC BARRIER TERMINAL, TYPE 5A

SECTION 05-00213-00-BR
ENDS AT STA. 12+75

SECTION 05-00213-00-BR
INCLUDES THE REMOVAL OF AN
EXISTING SINGLE SPAN CONCRETE SLAB
BRIDGE (EXIST. SN 019-3021), AND
REPLACEMENT WITH A SINGLE SPAN
REINFORCED CONCRETE SLAB BRIDGE ON
CLOSED PILE BENT ABUTMENTS
(PROP. SN 019-3066).
49'-0" BK.-BK. ABUTS.
ALSO INCLUDED IS NECESSARY ROADWAY
APPROACH WORK.

SECTION 05-00213-00-BR
BEGINS AT STA. 8+25



LOCATION MAP

GROSS LENGTH OF SECTION = 450 FEET (0.08 MILE)
NET LENGTH OF SECTION = 450 FEET (0.08 MILE)

FAS ROUTE NO.	SEC	COUNTY	TOTAL SHEETS	SHEET NO.
174	*	DEKALB	17	1

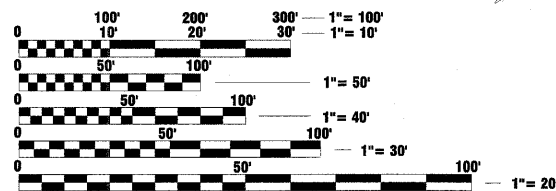
ILLINOIS PROJECT ARA-0174(118)
* 05-00213-00-BR
CONTRACT NO. 87403



DESIGN CRITERIA

ROADWAY	DESIGN CLASSIFICATION	ADT 2009	ADT 2029	DESIGN SPEED
SHABBONA	RURAL COLLECTOR	610	750	55

BUILT ACCORDING TO RURAL 3R GUIDELINES



FULL SIZE PLANS HAVE BEEN PREPARED USING STANDARD ENGINEERING SCALES. REDUCED SIZED PLANS WILL NOT CONFORM TO STANDARD SCALES. IN MAKING MEASUREMENTS ON REDUCED PLANS, THE ABOVE SCALES MAY BE USED.

J.U.L.I.E.
JOINT UTILITY LOCATION INFORMATION FOR EXCAVATION
1-800-892-0123

CONTRACT NO. 87403

RUSSELL L. RENNER
DIXON, ILLINOIS
ILLINOIS LICENSED PROFESSIONAL
ENGINEER NO. 062-048813
EXPIRES 11-30-2009

wendler
GROUNDBREAKING SOLUTIONS
engineers · surveyors · scientists
www.wendlers.com ph: 815.288.2261
Illinois Professional Design Firm No. 184-000848

STATE OF ILLINOIS
DEPARTMENT OF TRANSPORTATION
DIVISION OF HIGHWAYS

SUBMITTED 04-17 20 09
William J. ... COUNTY ENGINEER

PASSED 04-17 20 09
Harold R. Long DISTRICT 3 ENGINEER OF LOCAL ROADS & STREETS

RELEASED FOR
BID BASED ON
LIMITED REVIEW 04-17 20 09
George F. Ryan DEPUTY DIRECTOR OF HIGHWAYS REGION 2 ENGINEER

PRINTED BY THE AUTHORITY
OF THE STATE OF ILLINOIS