

REVISION	DATE

DESIGNED BY:	
CHECKED BY:	
DRAWING DATE:	
DATE:	
BOOK NO.:	

wendler
 GROUND-BREAKING SOLUTIONS
 engineers · surveyors · scientists
 www.wendlergs.com
 ph: 815.288.2261
 Illinois Professional Design Firm No. 184-000848

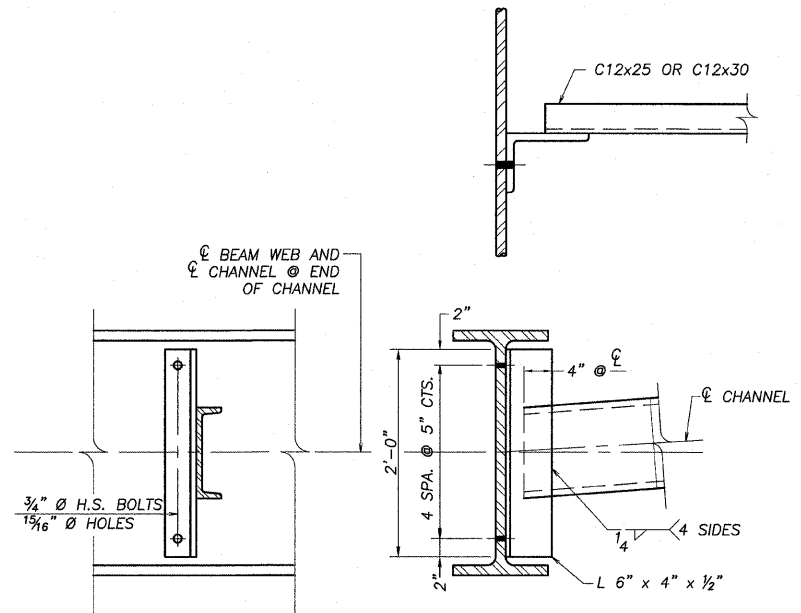
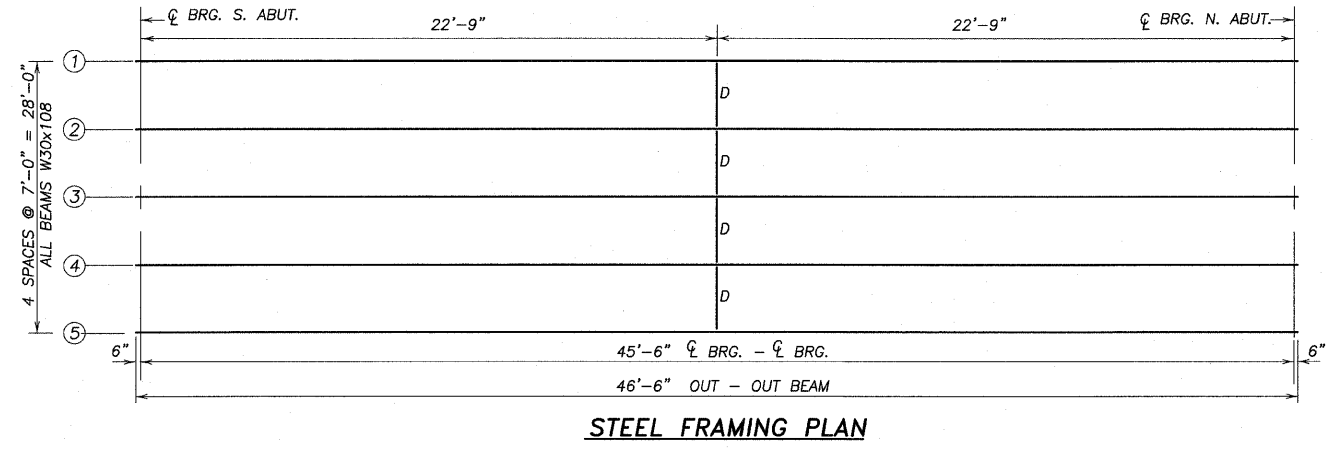
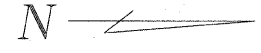
STRUCTURAL STEEL DETAILS
 OF
 SHABBONA ROAD BRIDGE REPLACEMENT
 FOR
 DEKALB COUNTY HIGHWAY

SHEET TITLE
STEEL DETAILS

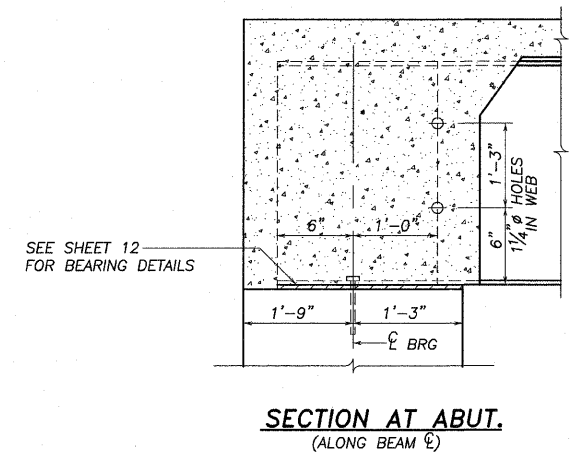
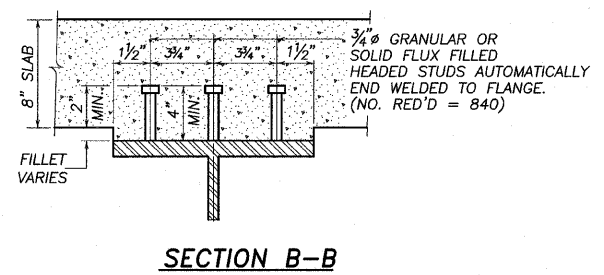
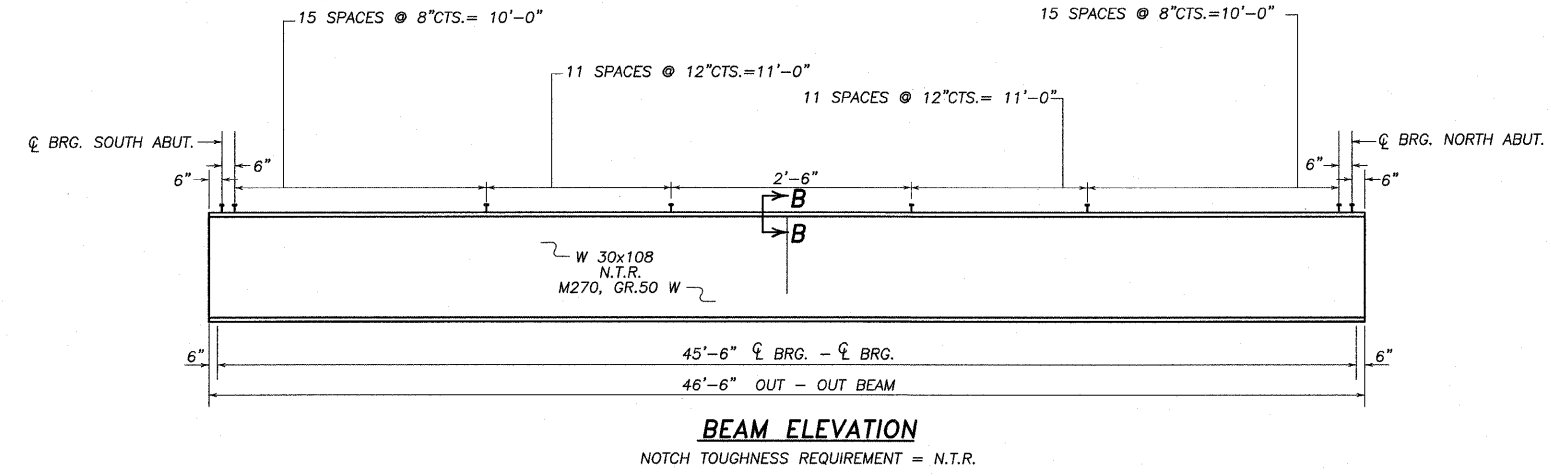
JOB NUMBER
2080381

DATE
2/23/2009

SHEET NO.



NOTE: TWO HARDENED WASHERS REQUIRED FOR EACH SET OF OVERIZED HOLES.



PROPOSED TOP OF BEAM ELEVATIONS *

LOCATION	BEAM No.	1	2	3	4	5
CL BRG. N. ABUT.		782.167	782.275	782.383	782.275	782.167
CL BRG. S. ABUT.		781.739	781.845	781.955	781.845	781.739

* ALLOW FOR 1 1/2" POSITIVE FILLET

STRUCTURAL STEEL DETAILS
 SECTION 05-00213-00-BR
 SHABBONA ROAD
 DEKALB COUNTY
 SN 019-3066